

Quality ID #317: Preventive Care and Screening: Screening for High Blood Pressure and Follow-Up Documented

2026 COLLECTION TYPE:

MERIT-BASED INCENTIVE PAYMENT SYSTEM (MIPS) MEDICARE PART B CLAIMS

MEASURE TYPE:

Process

DESCRIPTION:

Percentage of patient visits for patients aged 18 years and older seen during the performance period who were screened for high blood pressure AND a recommended follow-up plan is documented, as indicated, if blood pressure is elevated or hypertensive.

INSTRUCTIONS:

Reporting Frequency:

This measure is to be submitted at each visit for patients seen during the performance period.

Intent and Clinician Applicability:

The intent of this measure is to screen patients for high blood pressure and provide recommended follow-up as indicated. Merit-based Incentive Payment System (MIPS) eligible clinicians who submit the measure must perform the blood pressure (BP) screening at each patient visit by a MIPS eligible clinician and may not obtain measurements from external sources. This measure may be submitted by MIPS eligible clinicians who perform the quality actions described in the measure based on the services provided and the measure-specific denominator coding.

Measure Strata and Performance Rates:

This measure contains one strata defined by a single submission criteria.

This measure produces a single performance rate.

Implementation Considerations:

For the purposes of MIPS implementation, this visit measure is submitted each time a patient has a denominator eligible encounter during the performance period.

Both the systolic and diastolic blood pressure measurements are required for inclusion. If there are multiple blood pressures on the same date of service, use the most recent (last reading documented) as the representative blood pressure. The documented follow-up plan must be related to the current BP reading as indicated, example: "Patient referred to primary care provider for BP management".

Telehealth:

NOT TELEHEALTH ELIGIBLE: This measure is not appropriate for nor applicable to the telehealth setting. Patient encounters for this measure conducted via telehealth should be removed from the denominator eligible patient population. Therefore, if the patient meets all denominator criteria but the encounter is conducted via telehealth, it would be appropriate to remove them from the denominator eligible patient population. Telehealth eligibility is at the measure level for inclusion within the denominator eligible patient population and based on the measure specification definitions which are independent of changes to coding and/or billing practices.

Measure Submission:

Measure data may be submitted by individual MIPS eligible clinicians using Medicare Part B claims. The listed denominator criteria are used to identify the intended patient population. The numerator quality data codes included in this specification are used to submit the quality actions allowed by the measure on the claim form(s). All measure-specific coding should be submitted on the claim(s) representing the denominator eligible encounter and denominator exclusion(s)

(as applicable) or selected numerator option. Denominator exclusions describe a circumstance where the patient should be removed from the denominator. Within Medicare Part B claims submissions, denominator exclusions identify circumstances where the patient should be removed from the performance rate calculation prior to determining which numerator outcome is appropriate. QDCs are available to describe the denominator exclusion within the Measure Specification and should be submitted on the claim.

DENOMINATOR:

All patient visits for patients aged 18 years and older at the beginning of the performance period.

***DENOMINATOR NOTE:** *Signifies that this CPT Category I code is a non-covered service under the Physician Fee Schedule (PFS). These non-covered services will not be counted in the denominator population for Medicare Part B claims measures.*

Denominator Criteria (Eligible Cases):

Patients aged \geq 18 years at the beginning of the performance period

AND

Patient encounter during the performance period (CPT or HCPCS): 90791, 90792, 92002, 92004, 92012, 92014, 92532, 92534, 92537, 92538, 92540, 92541, 92542, 92544, 92545, 92546, 92622, 92625, 97802, 97803, 99202, 99203, 99204, 99205, 99212, 99213, 99214, 99215, 99236, 99242, 99243, 99244, 99245, 99281, 99282, 99283, 99284, 99285, 99304, 99305, 99306, 99307, 99308, 99309, 99310, 99315, 99316, 99341, 99342, 99344, 99345, 99347, 99348, 99349, 99350, 99385*, 99386*, 99387*, 99395*, 99396*, 99397*, 99424, 99491, D3921, D7111, D7140, D7210, D7220, D7230, D7240, D7241, D7250, D7251, G0101, G0270, G0402, G0438, G0439

WITHOUT

Encounters conducted via telehealth: M1442

AND NOT

DENOMINATOR EXCLUSION:

Patient not eligible due to active diagnosis of hypertension: G9744

NUMERATOR:

Patient visits where patients were screened for high blood pressure AND have a recommended follow-up plan documented, as indicated, if the blood pressure is elevated or hypertensive.

Definitions:

Blood Pressure (BP) Classification – BP is defined by four (4) BP reading classifications: Normal, Elevated, First Hypertensive, and Second Hypertensive Readings

- Normal BP: Systolic BP (SBP) < 120 mmHg AND Diastolic BP (DBP) < 80 mmHg
- Elevated BP: SBP of 120-129 mmHg AND DBP < 80 mmHg
- First Hypertensive Reading: SBP of \geq 130 mmHg OR DBP of \geq 80 mmHg without a previous SBP of \geq 130 mmHg OR DBP of \geq 80 mmHg during the 12 months prior to the encounter
- Second Hypertensive Reading: Requires a SBP \geq 130 mmHg OR DBP \geq 80 mmHg during the current encounter AND a most recent BP reading within the last 12 months SBP \geq 130 mmHg OR DBP \geq 80 mmHg

Recommended BP Follow-Up – The 2017 Guideline for the Prevention, Detection, Evaluation, and Management of High Blood Pressure in Adults from the American College of Cardiology and American Heart Association (2017 Guideline) recommends BP screening and thresholds as defined under Blood Pressure Classifications and recommends interventions based on the current BP reading as listed in the “Recommended Blood Pressure Follow-Up” Table below. The time periods for follow-up actions specified for the elevated and the second hypertensive (130-139 DBP OR 80-89 SBP) BP classifications slightly differ from time periods given in the 2017 Guideline. This allows for clinician discretion due to patient condition and stability of the measure specification over time.

Recommended Nonpharmacologic Interventions (Lifestyle Modifications) – The 2017 Guideline outlines nonpharmacologic interventions which must include one or more of the following as indicated:

- Weight Reduction
- A “heart-healthy diet”, such as Dietary Approaches to Stop Hypertension (DASH) Eating Plan

- Dietary Sodium Restriction
- Increased Physical Activity
- Moderation in alcohol consumption

Recommended Blood Pressure Follow-Up Table

BP Classification	Systolic BP mmHg	Diastolic BP mmHg	Recommended Follow-Up (<i>must include all indicated actions for each BP Classification</i>)
Normal BP Reading	< 120	AND < 80	No Follow-Up required
Elevated BP Reading	120 - 129	AND < 80	Rescreen BP within 6 months AND recommended nonpharmacologic interventions OR Referral to Alternate/Primary Care Provider
First Hypertensive BP Reading	> = 130	OR >= 80	Rescreen BP within 4 weeks AND recommended nonpharmacologic interventions OR Referral to Alternate/Primary Care Provider
Second Hypertensive BP Reading	130-139 and NOT >= 140	OR 80-89 and NOT >= 90	Recommended nonpharmacologic intervention AND reassessment within 6 months AND an order for laboratory test or ECG for hypertension OR Referral to Alternate/Primary Care Provider
Second Hypertensive BP Reading	>= 140	OR >= 90	Recommended nonpharmacologic intervention AND BP-lowering medication AND reassessment within 4 weeks AND an order for laboratory test or ECG for hypertension OR Referral to Alternate/Primary Care Provider

Patients with a Documented Reason for not Screening or no Follow-Up Plan for High Blood Pressure (Denominator Exception) –

- Documentation of medical reason(s) for not screening for high blood pressure (e.g., patient is in an urgent or emergent medical situation where time is of the essence and to delay treatment would jeopardize the patient's health status).
- Documentation of patient reason(s) for not screening for blood pressure measurements or for not ordering an appropriate follow-up intervention if patient BP is elevated or hypertensive (e.g., patient refuses).

NUMERATOR NOTE:

Although the recommended screening interval for a normal BP reading is every year, to meet the intent of this measure, BP screening and follow-up must be performed at every patient visit. For patients with Normal blood pressure, a follow-up plan is not required (G8783). Denominator Exception(s) are determined on the date of the denominator eligible encounter.

Numerator Quality Data Coding Options:

Normal Blood Pressure Reading Documented, Follow-Up not Required

Performance Met: G8783: Normal blood pressure reading documented, follow-up not required

OR

Elevated or Hypertensive Blood Pressure Reading Documented, AND Indicated Follow-Up Documented

Performance Met: G8950: Elevated or Hypertensive blood pressure reading documented, AND the indicated follow-up is documented

OR

Screening or Follow-Up for High Blood Pressure not Completed, Documented Reason

Denominator Exception: G9745: Documented reason for not screening or recommending a follow-up for high blood pressure

OR

Blood Pressure Reading not Documented, Reason not Given

Performance Not Met: G8785: Blood pressure reading not documented, reason not *given*

OR

Elevated or Hypertensive Blood Pressure Reading Documented, Indicated Follow-Up not Documented, Reason not Given

Performance Not Met: G8952: Elevated or Hypertensive blood pressure reading documented, indicated follow-up not documented, reason not given

RATIONALE:

Hypertension is a prevalent condition that affects approximately 66.9 million people in the United States. It is estimated that about 20-40percent of the adult population has hypertension; the majority of people over aged 65 have a hypertension diagnosis (1, 2). Winter noted that 1 in 3 American adults have hypertension and the lifetime risk of developing hypertension is 90 percent (3). The African American population or non-Hispanic Blacks, the elderly, diabetics and those with chronic kidney disease are at increased risk of stroke, myocardial infarction and renal disease. Non-Hispanic Blacks have the highest prevalence at 38.6 percent (3). Hypertension is a major risk factor for ischemic heart disease, left ventricular hypertrophy, renal failure, stroke and dementia (2). Prevention of hypertension and the treatment of established hypertension are complementary approaches to reducing cardiovascular disease risk in the population, but prevention of hypertension provides the optimal means of reducing risk and avoiding harmful consequences. Periodic BP screening can identify individuals who develop elevated BP over time. More frequent BP screening may be particularly important for individuals with elevated atherosclerotic cardiovascular disease (ASCVD) risk (4).

Hypertension is the most common reason for adult office visits other than pregnancy. Garrison stated that in 2007, 42 million ambulatory visits were attributed to hypertension (5). It also has the highest utilization of prescription drugs. Numerous resources and treatment options are available, yet only about 40- 50 percent of the hypertensive patients have their blood pressure under control (<140/90) (1,2). In addition to medication non-compliance, poor outcomes are also attributed to poor adherence to lifestyle changes such as a low-sodium diet, weight loss, increased exercise and limiting alcohol intake. Many adults find it difficult to continue medications and lifestyle changes when they are asymptomatic. Symptoms of elevated blood pressure usually do not occur until secondary problems arise such as with vascular diseases (myocardial infarction, stroke, heart failure and renal insufficiency) (2).

Appropriate follow-up after blood pressure measurement is a pivotal component in preventing the progression of hypertension and the development of heart disease. Detection of marginally or fully elevated blood pressure by a specialty clinician warrants referral to a provider familiar with the management of hypertension and prehypertension.

The American College of Cardiology/American Heart Association (ACC/AHA) 2017 Guidelines provide updated recommendations for ASCVD risk. For additional information please refer to the 2017 ACC/AHA guidelines: <https://www.acc.org/latest-in-cardiology/ten-points-to-remember/2017/11/09/11/41/2017-guideline-for-high-blood-pressure-in-adults> (4).

Lifestyle modifications have demonstrated effectiveness in lowering blood pressure (6). The synergistic effect of several lifestyle modifications results in greater benefits than a single modification alone. Baseline diagnostic/laboratory testing establishes if a co-existing underlying condition is the etiology of hypertension and evaluates if end organ damage from hypertension has already occurred. Landmark trials such as the Antihypertensive and Lipid-Lowering Treatment to Prevent Heart Attack Trial (ALLHAT) have repeatedly proven the efficacy of pharmacologic therapy to control blood pressure and reduce the complications of hypertension. A review of 35 studies found that the pharmacist-led interventions involved medication counseling and patient education. Twenty-nine of the 35 studies showed statistically significant improvement in BP levels of the intervention groups at follow-up (7). Follow-up intervals based on blood pressure control have been established by the 2017 ACC/AHA guideline and the United States Preventive Services Task Force (USPSTF).

CLINICAL RECOMMENDATION STATEMENTS:

The U.S. Preventive Services Task Force (USPSTF) recommends screening for high blood pressure in adults aged 18 years and older. This is a grade A recommendation (8).

REFERENCES:

1. Appleton, S. L., Neo, C., Hill, C. L., Douglas, K. A., & Adams, R. J. (2013). Untreated hypertension: prevalence and patient factors and beliefs associated with under-treatment in a population sample. *Journal of Human Hypertension*, 27, 453-462. [doi:10.1038/jhh.2012.62](https://doi.org/10.1038/jhh.2012.62)
2. Luehr, D., Woolley, T., Burke, R., Dohmen, F., Hayes, R., Johnson, M.,..., Schoenleber, M. (2012). Hypertension diagnosis and treatment; Institute for Clinical Systems Improvement health care guideline. Updated November, 2012
3. Winter, K. H., Tuttle, L. A. & Viera, A.J. (2013). Hypertension. *Primary Care Clinics in Office Practice*, 40, 179-194. [doi:10.1016/j.pop.2012.11.008](https://doi.org/10.1016/j.pop.2012.11.008)
4. Whelton, P.K., Carey, R.M., Aronow, W.S., Casey, D.E., Collins, K., Dennison Himmelfarb, C., Depalma, S.M., Gidding, S., Jamerson, K.A., Jones, D.W., MacLaughlin, E.J, Muntener, P., Ovbijaggele, B., Smith, S.C., Spencer, C.C., Stafford, R.S., Taler, S.J., Thomas, R.J., Williams, K. A., Williamson, J.D., Wright, J.T., (2018). 2017 ACC/AHA/AAPA/ABC/ACPM/AGS/AphA/ASH/ASPC/NMA/PCNA Guideline for the Prevention, Detection, Evaluation, and Management of High Blood Pressure in Adults: A Report of the American College of Cardiology/American Heart Association Task Force on Clinical Practice Guidelines. *Hypertension*, 71(6), e13-e115. doi.org/10.1161/HYP.000000000000065
5. Garrison, G. M. & Oberhelman, S. (2013). Screening for hypertension annually compared with current practice. *Annals of Family Medicine*, 11 (2), 116-121. [doi:10.1370/afm.1467](https://doi.org/10.1370/afm.1467)
6. U.S. Department of Health and Human Services, National Institutes of Health, National Heart, Lung, and Blood Institute & National High Blood Pressure Education Program (2003). The Seventh Report of the Joint National Committee on the Prevention, Detection, Evaluation, and Treatment of High Blood Pressure (JNC-7). NIH Publication No. 03-5233
7. Reeves, L., Robinson, K., McClelland, T., Adedoyin, C., Broeseker, A., and Adunlin, G. (2020). "Pharmacist Interventions in the Management of Blood Pressure Control and Adherence to Antihypertensive Medications: A Systematic Review of Randomized Controlled Trials." *Journal of Pharmacy Practice*. Available at <https://doi.org/10.1177/0897190020903573>. Accessed October 5, 2020
8. U.S. Preventive Services Task Force (2021). Screening for hypertension in adults. US Preventive Services Task Force reaffirmation recommendation statement. *Journal of the American Medical Association*, 325(16): 1650-1656.

COPYRIGHT:

THE MEASURES AND SPECIFICATIONS ARE PROVIDED "AS IS" WITHOUT WARRANTY OF ANY KIND.

©

This measure is owned and stewarded by the Centers for Medicare & Medicaid Services (CMS). CMS contracted (Contract # 75FCMC18D0027/ Task Order # 75FCMC24F0144) with the American Institutes for Research (AIR) to develop this measure. AIR is not responsible for any use of the Measure. AIR makes no representations, warranties, or endorsement about the quality of any organization or physician that uses or reports performance measures and AIR has no liability to anyone who relies on such measures or specifications. This measure is in the public domain.

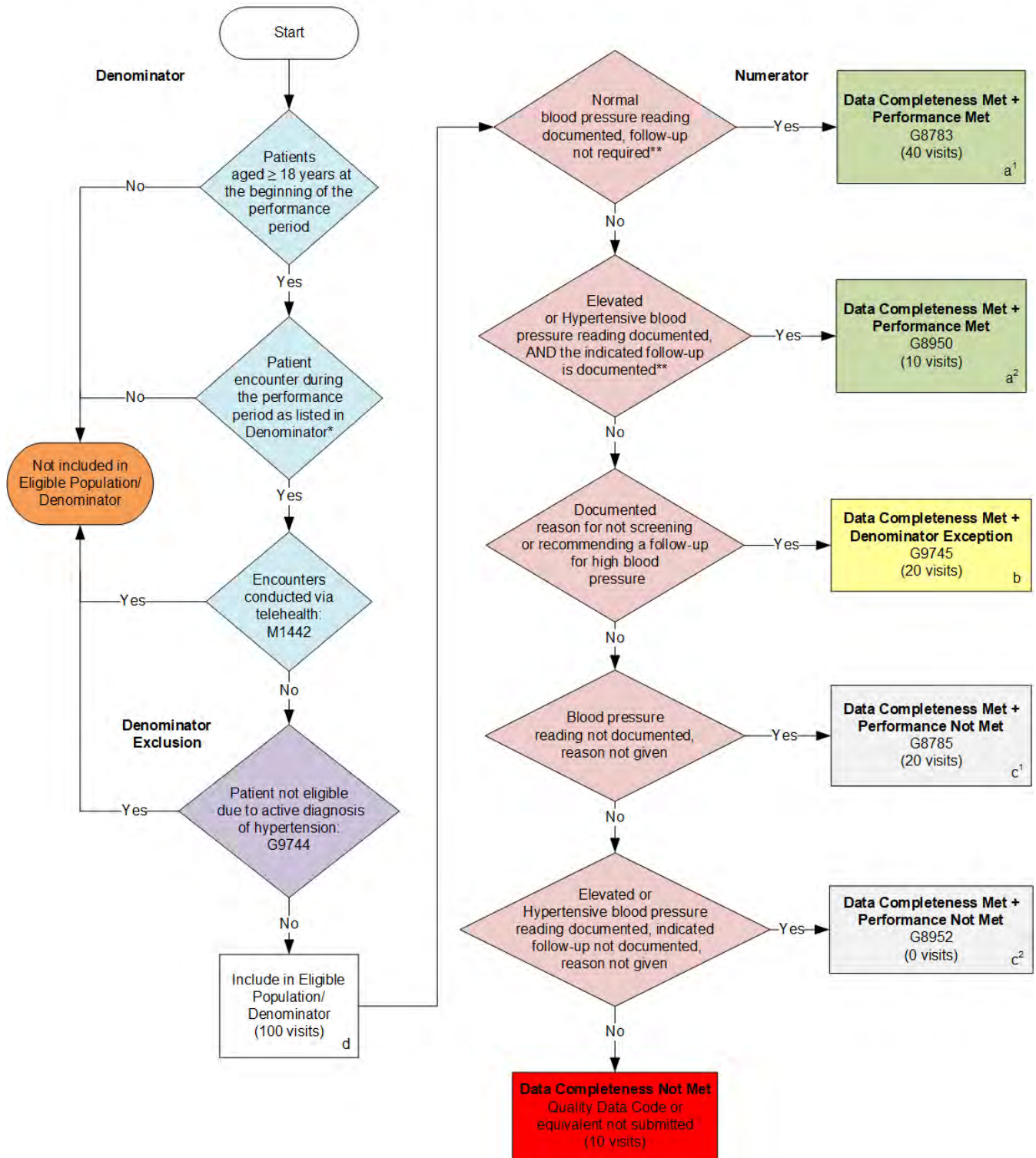
Limited proprietary coding is contained in the measure specifications for convenience. Users of the proprietary code sets should obtain all necessary licenses from the owners of these code sets. AIR disclaims all liability for use or accuracy of any third party codes contained in the specifications.

CPT® contained in the Measure specifications is copyright 2004-2025 American Medical Association. ICD-10 copyright 2025 World Health Organization. All Rights Reserved.

This performance measure is not clinical a guideline, does not establish a standard of medical care, and has not been tested for all potential applications.

**2026 Medicare Part B Claims Flow for Quality ID #317:
Preventive Care and Screening: Screening for High Blood Pressure and Follow-Up Documented**

Disclaimer: Refer to the measure specification for specific coding and instructions to submit this measure.



SAMPLE CALCULATIONS

Data Completeness=

$$\frac{\text{Performance Met (a}^1+\text{a}^2=50 \text{ visits)} + \text{Denominator Exception (b=20 visits)} + \text{Performance Not Met (c}^1+\text{c}^2=20 \text{ visits)}}{\text{Eligible Population / Denominator (d=100 visits)}} = \frac{90 \text{ visits}}{100 \text{ visits}} = 90.00\%$$

Performance Rate=

$$\frac{\text{Performance Met (a}^1+\text{a}^2=50 \text{ visits)}}{\text{Data Completeness Numerator (90 visits) – Denominator Exception (b=20 visits)}} = \frac{50 \text{ visits}}{70 \text{ visits}} = 71.43\%$$

*See the posted measure specification for specific coding and instructions to submit this measure.

**See the posted measure specification for classifications of blood pressure values and corresponding follow-up plans.

NOTE: Submission Frequency: Visit

CPT only copyright 2025 American Medical Association. All rights reserved.
The measure diagrams were developed by CMS as a supplemental resource to be used in conjunction with the measure specifications. They should not be used alone or as a substitution for the measure specification.

v10

**2026 Medicare Part B Claims Flow Narrative for Quality ID #317:
Preventive Care and Screening: Screening for High Blood Pressure and Follow-Up Documented**

Disclaimer: Refer to the measure specification for specific coding and instructions to submit this measure.

1. Start with Denominator
2. Check *Patients aged greater than or equal to 18 years at the beginning of the performance period*:
 - a. If *Patients aged greater than or equal to 18 years at the beginning of the performance period* equals No, do not include in *Eligible Population/Denominator*. Stop processing.
 - b. If *Patients aged greater than or equal to 18 years at the beginning of the performance period* equals Yes, proceed to check *Patient encounter during the performance period as listed in Denominator**.
3. Check *Patient encounter during the performance period as listed in Denominator**:
 - a. If *Patient encounter during the performance period as listed in Denominator** equals No, do not include in *Eligible Population/Denominator*. Stop processing.
 - b. If *Patient encounter during the performance period as listed in Denominator** equals Yes, proceed to check *Encounters conducted via telehealth*.
4. Check *Encounters conducted via telehealth*:
 - a. If *Encounters conducted via telehealth* equals Yes, do not include in *Eligible Population/Denominator*. Stop processing.
 - b. If *Encounters conducted via telehealth* equals No, proceed to check *Patient not eligible due to active diagnosis of hypertension*.
5. Check *Patient not eligible due to active diagnosis of hypertension*:
 - a. If *Patient not eligible due to active diagnosis of hypertension* equals Yes, do not include in *Eligible Population/Denominator*. Stop processing.
 - b. If *Patient not eligible due to active diagnosis of hypertension* equals No, include in *Eligible Population/Denominator*.
6. Denominator Population:
 - Denominator Population is all Eligible Visits in the Denominator. Denominator is represented as Denominator in the Sample Calculation listed at the end of this document. Letter d equals 100 visits in the Sample Calculation.
7. Start Numerator
8. Check *Normal blood pressure reading documented, follow-up not required***:
 - a. If *Normal blood pressure reading documented, follow-up not required*** equals Yes, include in *Data Completeness Met and Performance Met*.
 - *Data Completeness Met and Performance Met* letter is represented in the Data Completeness and Performance Rate in the Sample Calculation listed at the end of this document. Letter a¹ equals 40 visits in the Sample Calculation.

- b. If *Normal blood pressure reading documented, follow-up not required*** equals No, proceed to check *Elevated or Hypertensive blood pressure reading documented, AND the indicated follow-up is documented***.
9. Check *Elevated or Hypertensive blood pressure reading documented, AND the indicated follow-up is documented***:
- a. If *Elevated or Hypertensive blood pressure reading documented, AND the indicated follow-up is documented*** equals Yes, include in *Data Completeness Met and Performance Met*.
- *Data Completeness Met and Performance Met* letter is represented in the Data Completeness and Performance Rate in the Sample Calculation listed at the end of this document. Letter a² equals 10 visits in the Sample Calculation.
- b. If *Elevated or Hypertensive blood pressure reading documented, AND the indicated follow-up is documented*** equals No, proceed to check *Documented reason for not screening or recommending a follow-up for high blood pressure*.
10. Check *Documented reason for not screening or recommending a follow-up for high blood pressure*:
- a. If *Documented reason for not screening or recommending a follow-up for high blood pressure* equals Yes, include in *Data Completeness Met and Denominator Exception*.
- *Data Completeness Met and Denominator Exception* is represented in the Data Completeness and Performance Rate in the Sample Calculation listed at the end of this document. Letter b equals 20 visits in the Sample Calculation.
- b. If *Documented reason for not screening or recommending a follow-up for high blood pressure* equals No, proceed to check *Blood pressure reading not documented, reason not given*.
11. Check *Blood pressure reading not documented, reason not given*:
- a. If *Blood pressure reading not documented, reason not given* equals Yes, include in *Data Completeness Met and Performance Not Met*.
- *Data Completeness Met and Performance Not Met* is represented in the Data Completeness in the Sample Calculation listed at the end of this document. Letter c¹ equals 20 visits in the Sample Calculation.
- b. If *Blood pressure reading not documented, reason not given* equals No, proceed to check *Elevated or Hypertensive blood pressure reading documented, indicated follow-up not documented, reason not given*.
12. Check *Elevated or Hypertensive blood pressure reading documented, indicated follow-up not documented, reason not given*:
- a. If *Elevated or Hypertensive blood pressure reading documented, indicated follow-up not documented, reason not given* equals Yes, include in *Data Completeness Met and Performance Not Met*.
- *Data Completeness Met and Performance Not Met* is represented as Data Completeness in the Sample Calculation listed at the end of this document. Letter c² equals 0 visits in the Sample Calculation.
- b. If *Elevated or Hypertensive blood pressure reading documented, indicated follow-up not documented, reason not given* equals No, proceed to check *Data Completeness Not Met*.
13. Check *Data Completeness Not Met*:

- If *Data Completeness Not Met*, the Quality Data Code was not submitted. 10 visits have been subtracted from the Data Completeness Numerator in the Sample Calculation.

Sample Calculations

Data Completeness equals Performance Met (a^1 plus a^2 equals 50 visits) plus Denominator Exception (b equals 20 visits) plus Performance Not Met (c^1 plus c^2 equals 20 visits) divided by Eligible Population/Denominator (d equals 100 visits). All equals 90 visits divided by 100 visits. All equals 90.00 percent.

Performance Rate equals Performance Met (a^1 plus a^2 equals 50 visits) divided by Data Completeness Numerator (90 visits) minus Denominator Exception (b equals 20 visits). All equals 50 visits divided by 70 visits. All equals 71.43 percent.

*See the posted measure specification for specific coding and instructions to submit this measure.

** See the posted measure specification for classifications of blood pressure values and corresponding follow-up plans.

NOTE: Submission Frequency: Visit

The measure diagrams were developed by CMS as a supplemental resource to be used in conjunction with the measure specifications. They should not be used alone or as a substitution for the measure specification.