

Quality ID #422 (CBE 2063): Performing Cystoscopy at the Time of Hysterectomy for Pelvic Organ Prolapse to Detect Lower Urinary Tract Injury

2025 COLLECTION TYPE:
MEDICARE PART B CLAIMS

MEASURE TYPE:
Process – High Priority

DESCRIPTION:
Percentage of patients who undergo cystoscopy to evaluate for lower urinary tract injury at the time of hysterectomy for pelvic organ prolapse.

INSTRUCTIONS:
This measure is to be submitted **each time** a procedure is performed during the performance period for patients who undergo a hysterectomy for pelvic organ prolapse. This measure may be submitted by Merit-based Incentive Payment System (MIPS) eligible clinicians who perform the quality actions described in the measure based on the services provided and the measure-specific denominator coding.

Measure Submission Type:
Measure data may be submitted by individual MIPS eligible clinicians using Medicare Part B claims. The listed denominator criteria are used to identify the intended patient population. The numerator quality data codes included in this specification are used to submit the quality actions allowed by the measure on the claim form(s). All measure-specific coding should be submitted on the claim(s) representing the denominator eligible encounter and selected numerator option.

DENOMINATOR:
All patients undergoing hysterectomy for pelvic organ prolapse

Denominator Criteria (Eligible Cases):

All patients, regardless of age

AND

Diagnosis for Pelvic Organ Prolapse (ICD-10-CM): N81.10, N81.11, N81.12, N81.2, N81.3, N81.4, N81.89, N81.9

AND

Patient procedure during the performance period (CPT): 58150, 58152, 58180, 58260, 58262, 58263, 58267, 58270, 58275, 58280, 58290, 58291, 58292, 58294, 58541, 58542, 58543, 58544, 58550, 58552, 58553, 58554, 58570, 58571, 58572, 58573

WITHOUT

Telehealth Modifier (including but not limited to): GQ, GT, POS 02, POS 10

NUMERATOR:
Patients in whom an intraoperative cystoscopy was performed to evaluate for lower urinary tract injury at the time of hysterectomy for pelvic organ prolapse

Numerator Quality Data Coding Options:

Intraoperative Cystoscopy Performed

Performance Met: G9606:

Intraoperative cystoscopy performed to evaluate for lower tract injury

OR

Intraoperative Cystoscopy not Performed, Documented Medical Reasons

Denominator Exception: G9607:

Documented medical reasons for not performing intraoperative cystoscopy (e.g., urethral pathology precluding cystoscopy, any patient who has a congenital or acquired absence of the urethra) or in the case of patient death

OR

Intraoperative Cystoscopy not Performed

Performance Not Met: G9608:

Intraoperative cystoscopy not performed to evaluate for lower tract injury

RATIONALE:

Lower urinary tract (bladder and/or ureter(s)) injury is a common complication of prolapse repair surgery, occurring in up to 5% of patients. Delay in detection of lower urinary tract injury has an estimated cost of \$54,000 per injury (Visco et al), with significant morbidity for patients who experience them. Universal cystoscopy may detect up to 97% of all injuries at the time of surgery (Ibeanu et al, 2009), resulting in the prevention of significant morbidity and providing significant cost savings (over \$108 million per year).

There is a gap in the performance of cystoscopy at the time of hysterectomy for pelvic organ prolapse. In a recent study we found that only 84.5% (539/638) of surgeons performed cystoscopy at the time of hysterectomy for pelvic organ prolapse. As many as 97% of high volume surgeons performed a cystoscopy at the time of hysterectomy for pelvic organ prolapse while low volume surgeons performed this procedure only 75 % of the time (p<.001).

CLINICAL RECOMMENDATION STATEMENTS:

It is strongly recommended to perform cystoscopy at the conclusion of any hysterectomy done for an indication that includes uterovaginal prolapse. The cystoscopy must assess for and document at a minimum the integrity of the bladder as well as patency of the ureters.

COPYRIGHT:

This performance measure was developed and is owned by the American Urogynecologic Society ("AUGS"). This performance measures are not clinical guidelines and do not establish a standard of medical care. AUGS makes no representations, warranties, or endorsement about the quality of any organization or physician that uses or reports performance measures and AUGS has no liability to anyone who relies on such measures. AUGS holds a copyright in this measure and can rescind or alter this measure at any time. Users of the measure shall not have the right to alter, enhance, or otherwise modify the measure and shall not disassemble, recompile, or reverse engineer the source code or object code relating to the measure. Anyone desiring to use or reproduce the measure without modification for a noncommercial purpose may do so without obtaining any approval from AUGS. All commercial uses must be approved by AUGS and are subject to a license at the discretion of AUGS. Use by health care providers in connection with their own practices is not commercial use. A "commercial use" refers to any sale, license, or distribution of a measure for commercial gain, or incorporation of a measure into any product or service that is sold, licensed, or distributed for commercial gain, even if there is no actual charge for inclusion of the measure.

Performance measures developed by AUGS for CMS may look different from the measures solely created and owned by AUGS.

THE MEASURES AND SPECIFICATIONS ARE PROVIDED "AS IS" WITHOUT WARRANTY OF ANY KIND.

Limited proprietary coding from Current Procedural Terminology (CPT®) is contained in the measure specifications. Users of this code set should obtain all necessary licenses. AUGS disclaims all liability for use or accuracy of any Current Procedural Terminology (CPT®) or other coding contained in the specifications.

Physician Performance Measures (Measures) and related data specifications developed by AUGS are intended to facilitate quality improvement activities by physicians. These Measures are intended to assist physicians in enhancing quality of care. They are designed for use by any physician who manages the care of a patient for a specific condition or for diagnosis or prevention. AUGS encourages use of this Measure by other health care professionals, where appropriate.

Measures are subject to review and may be revised or rescinded at any time by AUGS. They may not be altered without the prior written approval from AUGS. Measures developed by AUGS, while copyrighted, can be reproduced and distributed, without modification, for noncommercial purposes, e.g., use by health care providers in connection with their practices. Commercial use of the Measures is not permitted absent a license agreement between the user and AUGS. Commercial use is defined as the sale, license, or distribution of the Measures for commercial gain, or incorporation of the Measures into a product or service that is sold, licensed or distributed for commercial gain.

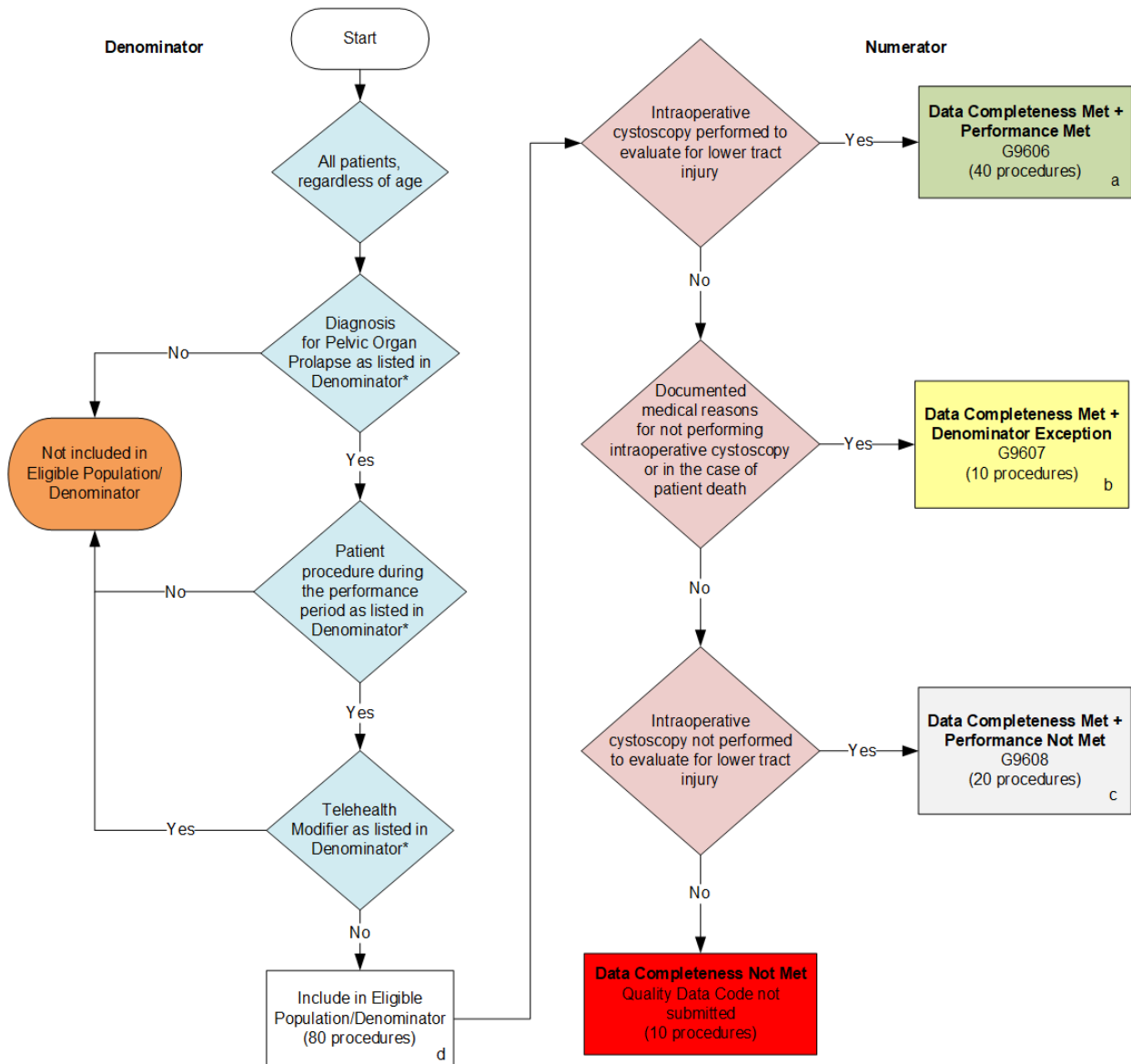
AUGS is not responsible for any harm to any party resulting from the use of these Measures.

Copyright © 2024 by the American Urogynecologic Society; 9466 Georgia Ave, PMB 2064 Silver Spring MD 20910. All Rights Reserved.

CPT® contained in the Measures specifications is copyright 2004-2024 American Medical Association. CPT® is a registered trademark of the American Medical Association. ICD-10 copyright 2024 World Health Organization. All Rights Reserved.

**2025 Medicare Part B Claims Flow for Quality ID #422 (CBE 2063):
Performing Cystoscopy at the Time of Hysterectomy for Pelvic Organ Prolapse to Detect Lower
Urinary Tract Injury**

Disclaimer: Refer to the measure specification for specific coding and instructions to submit this measure.



SAMPLE CALCULATIONS

Data Completeness=

$$\frac{\text{Performance Met (a=40 procedures)} + \text{Denominator Exception (b=10 procedures)} + \text{Performance Not Met (c=20 procedures)}}{\text{Eligible Population / Denominator (d=80 procedures)}} = \frac{70 \text{ procedures}}{80 \text{ procedures}} = 87.50\%$$

Performance Rate=

$$\frac{\text{Performance Met (a=40 procedures)}}{\text{Data Completeness Numerator (70 procedures) - Denominator Exception (b=10 procedures)}} = \frac{40 \text{ procedures}}{60 \text{ procedures}} = 66.67\%$$

*See the posted measure specification for specific coding and instructions to submit this measure.
 NOTE: Submission Frequency: Procedure

CPT only copyright 2024 American Medical Association. All rights reserved.
 The measure diagrams were developed by CMS as a supplemental resource to be used in conjunction with the measure specifications. They should not be used alone or as a substitution for the measure specification.

v9

**2025 Medicare Part B Claims Flow Narrative for Quality ID #422 (CBE 2063):
Performing Cystoscopy at the Time of Hysterectomy for Pelvic Organ Prolapse to Detect Lower
Urinary Tract Injury**

Disclaimer: Refer to the measure specification for specific coding and instructions to submit this measure.

1. Start with Denominator
2. All patients, regardless of age
3. Check *Diagnosis for Pelvic Organ Prolapse* as listed in *Denominator**:
 - a. If *Diagnosis for Pelvic Organ Prolapse* as listed in *Denominator** equals No, do not include in *Eligible Population/Denominator*. Stop processing.
 - b. If *Diagnosis for Pelvic Organ Prolapse* as listed in *Denominator** equals Yes, proceed to check *Patient procedure during the performance period* as listed in *Denominator**.
4. Check *Patient procedure during the performance period* as listed in *Denominator**:
 - a. If *Patient procedure during the performance period* as listed in *Denominator** equals No, do not include in *Eligible Population/Denominator*. Stop processing.
 - b. If *Patient procedure during the performance period* as listed in *Denominator** equals Yes, proceed to check *Telehealth Modifier* as listed in *Denominator**.
5. Check *Telehealth Modifier* as listed in *Denominator**:
 - a. If *Telehealth Modifier* as listed in *Denominator** equals Yes, do not include in *Eligible Population/Denominator*. Stop processing.
 - b. If *Telehealth Modifier* as listed in *Denominator** equals No, include in *Eligible Population/Denominator*.
6. Denominator Population:
 - Denominator Population is all Eligible Procedures in the Denominator. Denominator is represented as Denominator in the Sample Calculation listed at the end of this document. Letter d equals 80 procedures in the Sample Calculation.
7. Start Numerator
8. Check *Intraoperative cystoscopy performed to evaluate for lower tract injury*:
 - a. If *Intraoperative cystoscopy performed to evaluate for lower tract injury* equals Yes, include in *Data Completeness Met and Performance Met*.
 - *Data Completeness Met and Performance Met* letter is represented in the Data Completeness and Performance Rate in the Sample Calculation listed at the end of this document. Letter a equals 40 procedures in the Sample Calculation.
 - b. If *Intraoperative cystoscopy performed to evaluate for lower tract injury* equals No, proceed to check *Documented medical reasons for not performing intraoperative cystoscopy or in the case of patient death*.

9. Check *Documented medical reasons for not performing intraoperative cystoscopy or in the case of patient death*:
 - a. If *Documented medical reasons for not performing intraoperative cystoscopy or in the case of patient death* equals Yes, include in *Data Completeness Met and Denominator Exception*.
 - *Data Completeness Met and Denominator Exception* letter is represented in the Data Completeness and Performance Rate in the Sample Calculation listed at the end of this document. Letter b equals 10 procedures in the Sample Calculation.
 - b. If *Documented medical reasons for not performing intraoperative cystoscopy or in the case of patient death* equals No, proceed to check *Intraoperative cystoscopy not performed to evaluate for lower tract injury*.
10. Check *Intraoperative cystoscopy not performed to evaluate for lower tract injury*:
 - a. If *Intraoperative cystoscopy not performed to evaluate for lower tract injury* equals Yes, include in *Data Completeness Met and Performance Not Met*.
 - *Data Completeness Met and Performance Not Met* letter is represented in the Data Completeness in the Sample Calculation listed at the end of this document. Letter c equals 20 procedures in the Sample Calculation.
 - b. If *Intraoperative cystoscopy not performed to evaluate for lower tract injury* equals No, proceed to check *Data Completeness Not Met*.
11. Check *Data Completeness Not Met*:
 - a. If *Data Completeness Not Met*, the Quality Data Code was not submitted. 10 procedures have been subtracted from the Data Completeness Numerator in the Sample Calculation.

Sample Calculations

Data Completeness equals Performance Met (a equals 40 procedures) plus Denominator Exception (b equals 10 procedures) plus Performance Not Met (c equals 20 procedures) divided by Eligible Population/Denominator (d equals 80 procedures). All equals 70 procedures divided by 80 procedures. All equals 87.50 percent.

Performance Rate equals Performance Met (a equals 40 procedures) divided by Data Completeness Numerator (70 procedures) minus Denominator Exception (b equals 10 procedures). All equals 40 procedures divided by 60 procedures. All equals 66.67 percent.

*See the posted measure specification for specific coding and instructions to submit this measure.

NOTE: Submission Frequency: Procedure

The measure diagrams were developed by CMS as a supplemental resource to be used in conjunction with the measure specifications. They should not be used alone or as a substitution for the measure specification.