

Quality ID #225 (NQF 0509): Radiology: Reminder System for Screening Mammograms
– National Quality Strategy Domain: Communication and Care Coordination
– Meaningful Measure Area: Preventive Care

2021 COLLECTION TYPE:
MEDICARE PART B CLAIMS

MEASURE TYPE:
Structure – High Priority

DESCRIPTION:
Percentage of patients undergoing a screening mammogram whose information is entered into a reminder system with a target due date for the next mammogram

INSTRUCTIONS:
This measure is to be submitted **each time** a screening mammogram is performed during the performance period for patients seen during the performance period. This measure is intended to reflect the quality of services provided for reminding patients when follow-up mammograms are due.

Measure Submission Type:
Measure data may be submitted by individual MIPS eligible clinicians using Medicare Part B claims. The listed denominator criteria are used to identify the intended patient population. The numerator quality-data codes included in this specification are used to submit the quality actions allowed by the measure on the claim form(s). All measure-specific coding should be submitted on the claim(s) representing the denominator eligible encounter and selected numerator option.

DENOMINATOR:
All patients undergoing a screening mammogram

Denominator Criteria (Eligible Cases):

All patients, regardless of age

AND

Diagnosis for mammogram screening (ICD-10-CM): Z12.31

AND

Patient procedure during the performance period (CPT or HCPCS): 77067

NUMERATOR:
Patients whose information is entered into a reminder system with a target due date for the next mammogram

Numerator Instructions:

The reminder system should be linked to a process for notifying patients when their next mammogram is due and should include the following elements at a minimum: patient identifier, patient contact information, date(s) of prior screening mammogram(s) (if known), and the target due date for the next mammogram. Use of the reminder system is not required to be documented within the final report to meet performance for this measure.

Numerator Quality-Data Coding Options:

Patient Information Entered into a Reminder System with Target Due Date for the Next Mammogram

Performance Met: CPT II 7025F:

Patient information entered into a reminder system with a target due date for the next mammogram

OR

Patient Information not Entered into a Reminder System for Medical Reasons

Append a submission modifier (1P) to CPT Category II code 7025F to submit circumstances when the action described in the numerator is not performed for medical reasons.

Denominator Exception: 7025F with 1P: Documentation of medical reason(s) for not entering patient information into a reminder system (e.g., further screening mammograms are not indicated, such as patients with a limited life expectancy, other medical reason(s))

OR

Patient Information not Entered into a Reminder System, Reason not Otherwise Specified

Append a submission modifier (8P) to CPT Category II code 7025F to submit circumstances when the action described in the numerator is not performed and the reason is not otherwise specified.

Performance Not Met: 7025F with 8P: Patient Information not entered into a reminder system, reason not otherwise specified

RATIONALE:

Although screening mammograms can reduce breast cancer mortality by 20-35% in women aged 40 years and older, recent evidence shows that only 72% of women are receiving mammograms based on current guideline recommendations. The use of patient reminders is associated with an increase in screening mammography.

Encouraging the implementation of a reminder system could lead to an increase in mammography screening at appropriate intervals.

CLINICAL RECOMMENDATION STATEMENTS:

The Community Preventive Services Task Force recommends the use of client reminders to increase screening for breast and cervical cancers on the basis of strong evidence of effectiveness (CPSTF, 2010)

COPYRIGHT:

The Measure is not a clinical guideline, does not establish a standard of medical care, and has not been tested for all potential applications.

The Measure, while copyrighted, can be reproduced and distributed, without modification, for noncommercial purposes, e.g., use by health care providers in connection with their practices. Commercial use is defined as the sale, license, or distribution of the Measure for commercial gain, or incorporation of the Measure into a product or service that is sold, licensed or distributed for commercial gain.

Commercial uses of the Measure require a license agreement between the user and the American College of Radiology (ACR). Neither ACR nor its members shall be responsible for any use of the Measure.

The PCPI's and AMA's significant past efforts and contributions to the development and updating of the Measures are acknowledged. ACR is solely responsible for the review and enhancement ("Maintenance") of the Measure as of August 1, 2020.

ACR encourages use of the Measure by other health care professionals, where appropriate.

THE MEASURE AND SPECIFICATIONS ARE PROVIDED "AS IS" WITHOUT WARRANTY OF ANY KIND.

©2020 American College of Radiology. All Rights Reserved. Applicable FARS/DFARS Restrictions Apply to Government Use.

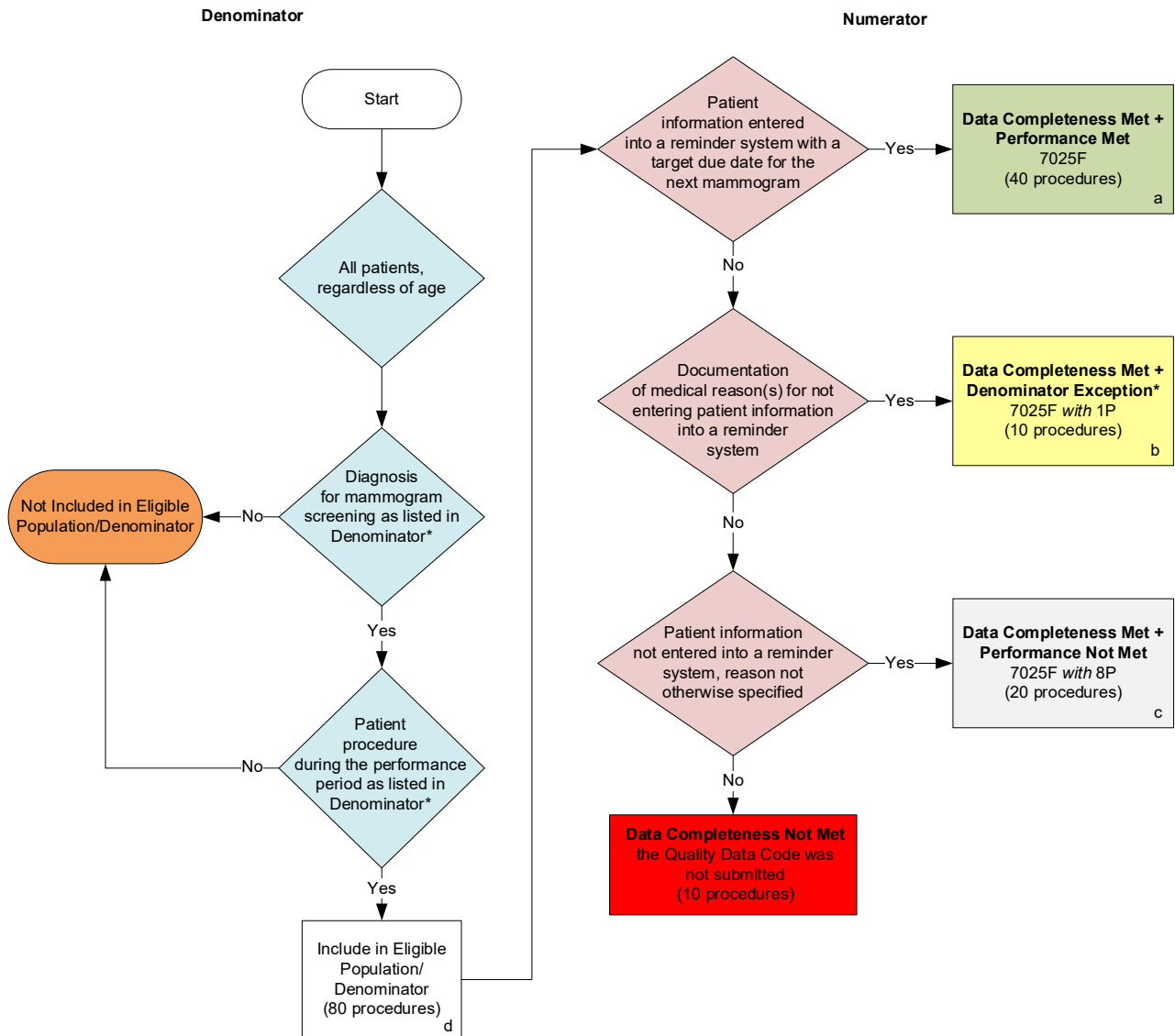
Limited proprietary coding may be contained in the Measure specifications for convenience. A license agreement must be entered prior to a third party's use of Current Procedural Terminology (CPT®) or other proprietary code set contained in the

Measures. Any other use of CPT or other coding by the third party is strictly prohibited. ACR and its members disclaim all liability for use or accuracy of any CPT or other coding contained in the specifications.

CPT® contained in the Measures specifications is copyright 2004-2020 American Medical Association. LOINC® copyright 2004-2020 Regenstrief Institute, Inc. SNOMED CLINICAL TERMS (SNOMED CT®) copyright 2004-2020. The International Health Terminology Standards Development Organisation (IHTSDO). ICD-10 is copyright 2020 World Health Organization. All Rights Reserved.

**2021 Medicare Part B Claims Flow for Quality ID #225 (NQF 0509):
Radiology: Reminder System for Screening Mammograms**

Disclaimer: Refer to the measure specification for specific coding and instructions to submit this measure.



SAMPLE CALCULATIONS

Data Completeness=

$$\frac{\text{Performance Met (a=40 procedures)} + \text{Denominator Exception (b=10 procedures)} + \text{Performance Not Met (c=20 procedures)}}{\text{Eligible Population / Denominator (d=80 procedures)}} = \frac{70 \text{ procedures}}{80 \text{ procedures}} = 87.50\%$$

Performance Rate=

$$\frac{\text{Performance Met (a=40 procedures)}}{\text{Data Completeness Numerator (70 procedures) – Denominator Exception (b=10 procedures)}} = \frac{40 \text{ procedures}}{60 \text{ procedures}} = 66.67\%$$

*See the posted measure specification for specific coding and instructions to submit this measure.
 NOTE: Submission Frequency: Procedure

CPT only copyright 2020 American Medical Association. All rights reserved.
 The measure diagrams were developed by CMS as a supplemental resource to be used in conjunction with the measure specifications. They should not be used alone or as a substitution for the measure specification.

v5

**2021 Medicare Part B Claims Flow Narrative for Quality ID #225 (NQF0509):
Radiology: Reminder System for Screening Mammograms**

Disclaimer: Refer to the measure specification for specific coding and instructions to submit this measure.

1. Start with Denominator
2. All patients, regardless of age.
3. Check *Diagnosis for mammogram screening as listed in Denominator**:
 - a. If *Diagnosis for mammogram screening as listed in Denominator** equals No, do not include in *Eligible Population/Denominator*. Stop processing.
 - b. If *Diagnosis for mammogram screening as listed in Denominator** equals Yes, proceed to check *Patient procedure during the performance period as listed in Denominator**.
4. Check *Patient procedure during the performance period as listed in Denominator**:
 - a. If *Patient procedure during the performance period as listed in Denominator** equals No, do not include in *Eligible Population/Denominator*. Stop processing.
 - b. If *Patient procedure during the performance period as listed in Denominator** equals Yes, include in *Eligible Population/Denominator*.
5. Denominator Population:
 - Denominator Population is all Eligible Procedures in the Denominator. Denominator is represented as Denominator in the Sample Calculation listed at the end of this document. Letter d equals 80 procedures in the Sample Calculation.
6. Start Numerator
7. Check *Patient information entered into a reminder system with a target due date for the next mammogram*:
 - a. If *Patient information entered into a reminder system with a target due date for the next mammogram* equals Yes, include in *Data Completeness Met and Performance Met*.
 - *Data Completeness Met and Performance Met* letter is represented in the Data Completeness and Performance Rate in the Sample Calculation listed at the end of this document. Letter a equals 40 procedures in the Sample Calculation.
 - b. If *Patient information entered into a reminder system with a target due date for the next mammogram* equals No, proceed to check *Documentation of medical reason(s) for not entering patient information into a reminder system*.
8. Check *Documentation of medical reason(s) for not entering patient information into a reminder system*:
 - a. If *Documentation of medical reason(s) for not entering patient information into a reminder system* equals Yes, include in *Data Completeness Met and Denominator Exception*.
 - *Data Completeness Met and Denominator Exception* letter is represented in the Data Completeness and Performance Rate in the Sample Calculation listed at the end of this document. Letter b equals 10 procedures in the Sample Calculation.

- b. If *Documentation of medical reason(s) for not entering patient information into a reminder system* equals No, proceed to check *Patient information not entered into a reminder system, reason not otherwise specified*.
9. Check *Patient information not entered into a reminder system, reason not otherwise specified*:
 - a. If *Patient information not entered into a reminder system, reason not otherwise specified* equals Yes, include in *Data Completeness Met and Performance Not Met*.
 - *Data Completeness Met and Performance Not Met* letter is represented in the Data Completeness in the Sample Calculation listed at the end of this document. Letter c equals 20 procedures in the Sample Calculation.
 - b. If *Patient information not entered into a reminder system, reason not otherwise specified* equals No, proceed to check *Data Completeness Not Met*.
10. Check *Data Completeness Not Met*.
 - a. If *Data Completeness Not Met*, the Quality Data Code was not submitted. 10 procedures have been subtracted from the Data Completeness Numerator in the Sample Calculation.

Sample Calculations

Data Completeness equals Performance Met (a equals 40 procedures) plus Denominator Exception (b equals 10 procedures) plus Performance Not Met (c equals 20 procedures) divided by Eligible Population/Denominator (d equals 80 procedures). All equals 70 procedures divided by 80 procedures. All equals 87.50 percent.

Performance Rate equals Performance Met (a equals 40 procedures) divided by Data Completeness Numerator (70 procedures) minus Denominator Exception (b equals 10 procedures). All equals 40 procedures divided by 60 procedures. All equals 66.67 percent.

*See the posted measure specification for specific coding and instructions to submit this measure.

NOTE: Submission Frequency: Procedure

The measure diagrams were developed by CMS as a supplemental resource to be used in conjunction with the measure specifications. They should not be used alone or as a substitution for the measure specification.