

**Quality ID #195 (NQF 0507): Radiology: Stenosis Measurement in Carotid Imaging Reports**  
– National Quality Strategy Domain: Effective Clinical Care  
– Meaningful Measure Area: Preventable Healthcare Harm

**2021 COLLECTION TYPE:**  
**MEDICARE PART B CLAIMS**

**MEASURE TYPE:**  
Process

**DESCRIPTION:**  
Percentage of final reports for carotid imaging studies (neck magnetic resonance angiography [MRA], neck computed tomography angiography [CTA], neck duplex ultrasound, carotid angiogram) performed that include direct or indirect reference to measurements of distal internal carotid diameter as the denominator for stenosis measurement

**INSTRUCTIONS:**  
This measure is to be submitted **each time** a carotid imaging study is performed during the performance period for patients aged 18 years and older during the submission period. There is no diagnosis associated with this measure. Merit-based Incentive Payment System (MIPS) eligible clinicians who provide the professional component of diagnostic imaging studies of the carotids will submit this measure.

**Measure Submission Type:**  
Measure data may be submitted by individual MIPS eligible clinicians using Medicare Part B claims. The listed denominator criteria are used to identify the intended patient population. The numerator quality-data codes included in this specification are used to submit the quality actions allowed by the measure on the claim form(s). All measure-specific coding should be submitted on the claim(s) representing the denominator eligible encounter and selected numerator option.

**DENOMINATOR:**  
All final reports for carotid imaging studies (neck MR angiography [MRA], neck CT angiography [CTA], neck duplex ultrasound, carotid angiogram) performed on patients aged 18 years and older during the submission period

***DENOMINATOR NOTE:*** \*Signifies that this CPT Category I code is a non-covered service under the Medicare Part B Physician Fee Schedule (PFS). These non-covered services will not be counted in the denominator population for Medicare Part B claims measures.

**Denominator Criteria (Eligible Cases):**

Patients aged  $\geq$  18 years on date of encounter

**AND**

**Patient procedure during the performance period (CPT):** 36221, 36222, 36223, 36224, 37215, 37216\*, 37217, 37218, 70498, 70547, 70548, 70549, 93880, 93882

**NUMERATOR:**  
Final reports for carotid imaging studies that include direct or indirect reference to measurements of distal internal carotid diameter as the denominator for stenosis measurement

**Definition:**

**“Direct or indirect reference to measurements of distal internal carotid diameter as the denominator for stenosis measurement”** – includes direct angiographic stenosis calculation based on the distal lumen as the denominator for stenosis measurement OR an equivalent validated method referenced to the above method (e.g., for duplex ultrasound studies, velocity parameters that correlate with anatomic measurements that use the distal internal carotid lumen as the denominator for stenosis

measurement).

**Numerator Instructions:**

This measure requires that the estimate of stenosis included in the report of the imaging study employ a method such as the North American Symptomatic Carotid Endarterectomy Trial (NASCET) method for calculating the degree of stenosis. The NASCET method calculates the degree of stenosis with reference to the lumen of the carotid artery distal to the stenosis.

For duplex imaging studies the reference is indirect, since the degree of stenosis is inferred from velocity parameters and cross referenced to published or self-generated correlations among velocity parameters and results of angiography or other imaging studies which serve as the gold standard. In Doppler ultrasound, the degree of stenosis can be estimated using Doppler parameter of the peak systolic velocity (PSV) of the internal carotid artery (ICA), with concordance of the degree of narrowing of the ICA lumen. Additional Doppler parameters of ICA-to-common carotid artery (CCA) PSV ratio and ICA end-diastolic velocity (EDV) can be used when degree of stenosis is uncertain from ICA PSV. (Grant et al, 2003)

Measure performance is met when study methodology is identified and findings are reported as a percentage or range of percentages of carotid stenosis. Documented findings of “No Stenosis” determined through NASCET or comparable methodology also meet measure performance. A short note can be made in the final report, such as:

- Severe left ICA stenosis of 70-80% by NASCET criteria” or
- “Severe left ICA stenosis of 70-80% by criteria similar to NASCET” or
- “70% stenosis derived by comparing the narrowest segment with the distal luminal diameter as related to the reported measure of arterial narrowing” or
- “Severe stenosis of 70-80% - validated velocity measurements with angiographic measurements, velocity criteria are extrapolated from diameter data as defined by the Society of Radiologists in Ultrasound Consensus Conference Radiology 2003; 229;340-346”.

In a small number of denominator cases the distal ICA may not be viewed e.g. an innominate artery or common carotid injection. It can be reported that “stenosis measurements are made with reference to the distal lumen”, as a matter of process and consistent practice method.

**Numerator Quality-Data Coding Options:**

**Reference to Measurements of Distal Internal Carotid Diameter as the Denominator for Stenosis Measurement Referenced**

**Performance Met: CPT II 3100F:**

Carotid imaging study report (includes direct or indirect reference to measurements of distal internal carotid diameter as the denominator for stenosis measurement)

**OR**

**Measurements of Distal Internal Carotid Diameter not Referenced, Reason not Otherwise Specified**

Append a reporting modifier (8P) to CPT Category II code 3100F to submit circumstances when the action described in the numerator is not performed and the reason is not otherwise specified.

**Performance Not Met: 3100F with 8P:**

Carotid imaging study report did not include direct or indirect reference to measurements of distal internal carotid diameter as the denominator for stenosis measurement, reason not otherwise specified

**RATIONALE:**

Accurate assessment of the degree of carotid artery stenosis is essential to guiding proper treatment decisions for

patients with carotid artery disease. Trials have demonstrated the ability of the degree of carotid artery stenosis to predict which patients will receive the greatest benefit from surgical intervention. To ensure accurate assessment of stenosis, it is important to use a standardized, validated approach. Rothwell et al demonstrated significant differences between measurements of stenosis made using different methods of measurement.

#### **CLINICAL RECOMMENDATION STATEMENTS:**

The panel recommended that the NASCET method of carotid stenosis measurement should be used when angiography is used to correlate the US findings. (SRU, 2003)

When MRA techniques are used for determining carotid stenosis, the report should reflect the methodology and reference the criteria for percent stenosis outlined in the NASCET. Also, the percent stenosis must be calculated using the distal cervical ICA diameter, where the walls are parallel, for the denominator. Similar to CTA, MRA with attention to the acquisition parameters and post-processing techniques can provide cross sectional measurements of stenosis that correlate with properly performed NASCET estimates of percent stenosis obtained with catheter angiography. In the setting of near occlusion, it may not be accurate to calculate percent stenosis ratios in the presence of post-stenotic arterial diameter decrease. Some MRA techniques may not be amenable to quantitative measurements, in which case qualitative assessment of stenosis should be provided. (ACR, 2010)

#### **COPYRIGHT:**

The Measure is not a clinical guideline, does not establish a standard of medical care, and has not been tested for all potential applications.

The Measure, while copyrighted, can be reproduced and distributed, without modification, for noncommercial purposes, e.g., use by health care providers in connection with their practices. Commercial use is defined as the sale, license, or distribution of the Measure for commercial gain, or incorporation of the Measure into a product or service that is sold, licensed or distributed for commercial gain.

Commercial uses of the Measure require a license agreement between the user and the American College of Radiology (ACR). Neither ACR nor its members shall be responsible for any use of the Measure.

The PCPI's and AMA's significant past efforts and contributions to the development and updating of the Measures are acknowledged. ACR is solely responsible for the review and enhancement ("Maintenance") of the Measure as of August 1, 2020.

ACR encourages use of the Measure by other health care professionals, where appropriate.

#### **THE MEASURE AND SPECIFICATIONS ARE PROVIDED "AS IS" WITHOUT WARRANTY OF ANY KIND.**

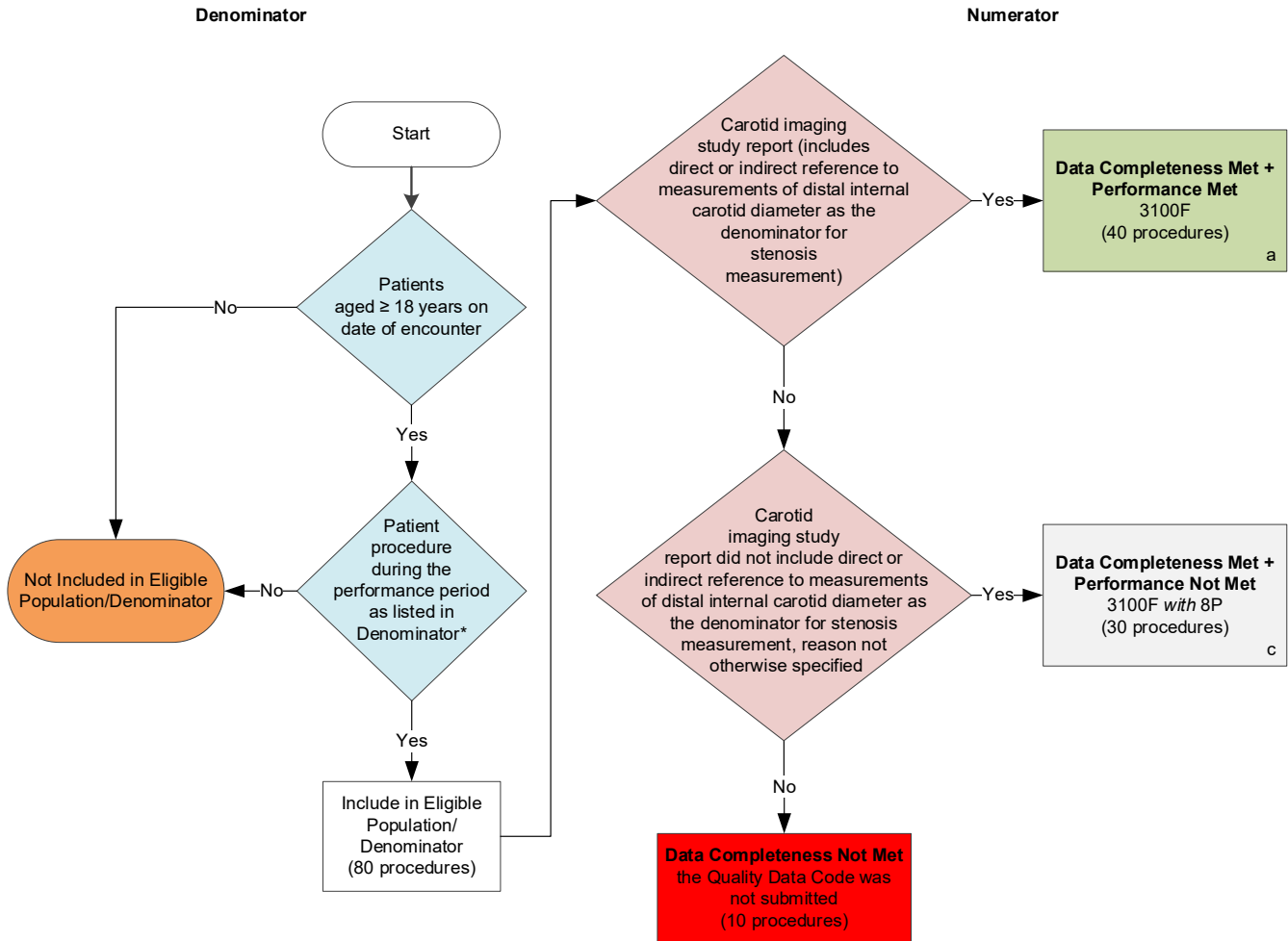
©2020 American College of Radiology. All Rights Reserved. Applicable FARS/DFARS Restrictions Apply to Government Use.

Limited proprietary coding may be contained in the Measure specifications for convenience. A license agreement must be entered prior to a third party's use of Current Procedural Terminology (CPT®) or other proprietary code set contained in the Measures. Any other use of CPT or other coding by the third party is strictly prohibited. ACR and its members disclaim all liability for use or accuracy of any CPT or other coding contained in the specifications.

CPT® contained in the Measures specifications is copyright 2004-2020 American Medical Association. LOINC® copyright 2004-2020 Regenstrief Institute, Inc. SNOMED CLINICAL TERMS (SNOMED CT®) copyright 2004-2020. The International Health Terminology Standards Development Organisation (IHTSDO). ICD-10 is copyright 2020 World Health Organization. All Rights Reserved.

**2021 Medicare Part B Claims Flow for Quality ID #195 (NQF 0507):  
Radiology: Stenosis Measurement in Carotid Imaging Reports**

*Disclaimer: Refer to the measure specification for specific coding and instructions to submit this measure.*



**SAMPLE CALCULATIONS**

**Data Completeness=**  

$$\frac{\text{Performance Met (a=40 procedures)} + \text{Performance Not Met (c=30 procedures)}}{\text{Eligible Population / Denominator (d=80 procedures)}} = \frac{70 \text{ procedures}}{80 \text{ procedures}} = 87.50\%$$

**Performance Rate=**  

$$\frac{\text{Performance Met (a=40 procedures)}}{\text{Data Completeness Numerator (70 procedures)}} = \frac{40 \text{ procedures}}{70 \text{ procedures}} = 57.14\%$$

\*See the posted measure specification for specific coding and instructions to submit this measure.  
 NOTE: Submission Frequency: Procedure

CPT only copyright 2020 American Medical Association. All rights reserved.  
 The measure diagrams were developed by CMS as a supplemental resource to be used in conjunction with the measure specifications. They should not be used alone or as a substitution for the measure specification.  
 v5

**2021 Medicare Part B Claims Flow Narrative for Quality ID #195 (NQF 0507):  
Radiology: Stenosis Measurement in Carotid Imaging Reports**

**Disclaimer:** Refer to the measure specification for specific coding and instructions to submit this measure.

1. Start with Denominator
2. Check *Patients aged greater than or equal to 18 years on date of encounter*.
  - a. If *Patients aged greater than or equal to 18 years on date of encounter* equals No, do not include in *Eligible Population/Denominator*. Stop processing.
  - b. If *Patients aged greater than or equal to 18 years on date of encounter* equals Yes, proceed to check *Patient procedure during the performance period as listed in Denominator\**.
3. *Patient procedure during the performance period as listed in Denominator\**:
  - a. If *Patient procedure during the performance period as listed in Denominator\** equals No, do not include in *Eligible Population/Denominator*. Stop processing.
  - b. If *Patient procedure during the performance period as listed in Denominator\** equals Yes, include in *Eligible Population/Denominator*.
4. Denominator Population:
  - Denominator Population is all Eligible Procedures in the Denominator. Denominator is represented as Denominator in the Sample Calculation listed at the end of this document. Letter d equals 80 procedures in the Sample Calculation.
5. Start Numerator
6. Check *Carotid imaging study report (includes direct or indirect reference to measurements of distal internal carotid diameter as the denominator for stenosis measurement)*:
  - a. If *Carotid imaging study report (includes direct or indirect reference to measurements of distal internal carotid diameter as the denominator for stenosis measurement)* equals Yes, include in *Data Completeness Met and Performance Met*.
    - *Data Completeness Met and Performance Met* letter is represented in the Data Completeness and Performance Rate in the Sample Calculation listed at the end of this document. Letter a equals 40 procedures in the Sample Calculation.
  - b. If *Carotid imaging study report (includes direct or indirect reference to measurements of distal internal carotid diameter as the denominator for stenosis measurement)* equals No, proceed to check *Carotid imaging study report did not include direct or indirect reference to measurements of distal internal carotid diameter as the denominator for stenosis measurement, reason not otherwise specified*.
7. Check *Carotid imaging study report did not include direct or indirect reference to measurements of distal internal carotid diameter as the denominator for stenosis measurement, reason not otherwise specified*:
  - a. If *Carotid imaging study report did not include direct or indirect reference to measurements of distal internal carotid diameter as the denominator for stenosis measurement, reason not otherwise specified* equals Yes, include in *Data Completeness Met and Performance Not Met*.
    - *Data Completeness Met and Performance Not Met* letter is represented in the Data Completeness

in the Sample Calculation listed at the end of this document. Letter c equals 30 procedures in the Sample Calculation.

- b. If *Carotid imaging study report did not include direct or indirect reference to measurements of distal internal carotid diameter as the denominator for stenosis measurement, reason not otherwise specified* equals No, proceed to check *Data Completeness Not Met*.
8. Check *Data Completeness Not Met*:
- a. If Data Completeness Not Met, the Quality Data Code was not submitted. 10 procedures have been subtracted from the Data Completeness Numerator in the Sample Calculation.

### **Sample Calculations**

Data Completeness equals Performance Met (a equals 40 procedures) plus Performance Not Met (c equals 30 procedures) divided by Eligible Population / Denominator (d equals 80 procedures). All equals 70 procedures divided by 80 procedures. All equals 87.50 percent.

Performance Rate equals Performance Met (a equals 40 procedures) divided by Data Completeness Numerator (70 procedures). All equals 40 procedures divided by 70 procedures. All equals 57.14 percent.

\*See the posted measure specification for specific coding and instructions to submit this measure.

NOTE: Submission Frequency: Procedure

The measure diagrams were developed by CMS as a supplemental resource to be used in conjunction with the measure specifications. They should not be used alone or as a substitution for the measure specification.