

Quality ID #317: Preventive Care and Screening: Screening for High Blood Pressure and Follow-Up Documented

- National Quality Strategy Domain: Community/Population Health
- Meaningful Measure Area: Preventive Care

2021 COLLECTION TYPE:
MEDICARE PART B CLAIMS

MEASURE TYPE:
Process

DESCRIPTION:

Percentage of patient visits for patients aged 18 years and older seen during the measurement period who were screened for high blood pressure AND a recommended follow-up plan is documented, as indicated, if blood pressure is pre-hypertensive or hypertensive

INSTRUCTIONS:

This measure is to be submitted at **each visit** for patients seen during the measurement period. Merit-based Incentive Payment System (MIPS) eligible clinicians who submit the measure must perform the blood pressure screening at each patient visit by a MIPS eligible clinician and may not obtain measurements from external sources.

This measure may be submitted by MIPS eligible clinicians who perform the quality actions described in the measure based on the services provided and the measure-specific denominator coding. The intent of this measure is to screen patients for high blood pressure and provide recommended follow-up as indicated. Both the systolic and diastolic blood pressure measurements are required for inclusion. If there are multiple blood pressures on the same date of service, use the most recent (last reading documented) as the representative blood pressure. The documented follow-up plan must be related to the current BP reading as indicated, example: "Patient referred to primary care provider for BP management".

Measure Submission Type:

Measure data may be submitted by individual MIPS eligible clinicians using Medicare Part B claims. The listed denominator criteria are used to identify the intended patient population. The numerator quality-data codes included in this specification are used to submit the quality actions allowed by the measure on the claim form(s). All measure-specific coding should be submitted on the claim(s) representing the denominator eligible encounter and selected numerator option.

DENOMINATOR:

All patient visits for patients aged 18 years and older at the beginning of the measurement period

DENOMINATOR NOTE: *Signifies that this CPT Category I code is a non-covered service under the Physician Fee Schedule (PFS). These non-covered services will not be counted in the denominator population for Medicare Part B claims measures.

Denominator Criteria (Eligible Cases):

Patients aged \geq 18 years

AND

Patient encounter during the performance period (CPT or HCPCS): 90791, 90792, 92002, 92004, 92012, 92014, 92022, 92023, 92024, 92025, 92026, 92027, 92028, 92029, 92030, 92031, 92032, 92033, 92034, 92035, 92036, 92037, 92038, 92039, 92040, 92041, 92042, 92043, 92044, 92045, 92046, 92047, 92048, 92049, 92050, 92051, 92052, 92053, 92054, 92055, 92056, 92057, 92058, 92059, 92060, 92061, 92062, 92063, 92064, 92065, 92066, 92067, 92068, 92069, 92070, 92071, 92072, 92073, 92074, 92075, 92076, 92077, 92078, 92079, 92080, 92081, 92082, 92083, 92084, 92085, 92086, 92087, 92088, 92089, 92090, 92091, 92092, 92093, 92094, 92095, 92096, 92097, 92098, 92099, 92100, 92101, 92102, 92103, 92104, 92105, 92106, 92107, 92108, 92109, 92110, 92111, 92112, 92113, 92114, 92115, 92116, 92117, 92118, 92119, 92120, 92121, 92122, 92123, 92124, 92125, 92126, 92127, 92128, 92129, 92130, 92131, 92132, 92133, 92134, 92135, 92136, 92137, 92138, 92139, 92140, 92141, 92142, 92143, 92144, 92145, 92146, 92147, 92148, 92149, 92150, 92151, 92152, 92153, 92154, 92155, 92156, 92157, 92158, 92159, 92160, 92161, 92162, 92163, 92164, 92165, 92166, 92167, 92168, 92169, 92170, 92171, 92172, 92173, 92174, 92175, 92176, 92177, 92178, 92179, 92180, 92181, 92182, 92183, 92184, 92185, 92186, 92187, 92188, 92189, 92190, 92191, 92192, 92193, 92194, 92195, 92196, 92197, 92198, 92199, 92200, 92201, 92202, 92203, 92204, 92205, 92206, 92207, 92208, 92209, 92210, 92211, 92212, 92213, 92214, 92215, 92216, 92217, 92218, 92219, 92220, 92221, 92222, 92223, 92224, 92225, 92226, 92227, 92228, 92229, 92230, 92231, 92232, 92233, 92234, 92235, 92236, 92237, 92238, 92239, 92240, 92241, 92242, 92243, 92244, 92245, 92246, 92247, 92248, 92249, 92250, 92251, 92252, 92253, 92254, 92255, 92256, 92257, 92258, 92259, 92260, 92261, 92262, 92263, 92264, 92265, 92266, 92267, 92268, 92269, 92270, 92271, 92272, 92273, 92274, 92275, 92276, 92277, 92278, 92279, 92280, 92281, 92282, 92283, 92284, 92285, 92286, 92287, 92288, 92289, 92290, 92291, 92292, 92293, 92294, 92295, 92296, 92297, 92298, 92299, 92300, 92301, 92302, 92303, 92304, 92305, 92306, 92307, 92308, 92309, 92310, 92311, 92312, 92313, 92314, 92315, 92316, 92317, 92318, 92319, 92320, 92321, 92322, 92323, 92324, 92325, 92326, 92327, 92328, 92329, 92330, 92331, 92332, 92333, 92334, 92335, 92336, 92337, 92338, 92339, 92340, 92341, 92342, 92343, 92344, 92345, 92346, 92347, 92348, 92349, 92350, 92351, 92352, 92353, 92354, 92355, 92356, 92357, 92358, 92359, 92360, 92361, 92362, 92363, 92364, 92365, 92366, 92367, 92368, 92369, 92370, 92371, 92372, 92373, 92374, 92375, 92376, 92377, 92378, 92379, 92380, 92381, 92382, 92383, 92384, 92385, 92386, 92387, 92388, 92389, 92390, 92391, 92392, 92393, 92394, 92395, 92396, 92397, 92398, 92399, 92400, 92401, 92402, 92403, 92404, 92405, 92406, 92407, 92408, 92409, 92410, 92411, 92412, 92413, 92414, 92415, 92416, 92417, 92418, 92419, 92420, 92421, 92422, 92423, 92424, 92425, 92426, 92427, 92428, 92429, 92430, 92431, 92432, 92433, 92434, 92435, 92436, 92437, 92438, 92439, 92440, 92441, 92442, 92443, 92444, 92445, 92446, 92447, 92448, 92449, 92450, 92451, 92452, 92453, 92454, 92455, 92456, 92457, 92458, 92459, 92460, 92461, 92462, 92463, 92464, 92465, 92466, 92467, 92468, 92469, 92470, 92471, 92472, 92473, 92474, 92475, 92476, 92477, 92478, 92479, 92480, 92481, 92482, 92483, 92484, 92485, 92486, 92487, 92488, 92489, 92490, 92491, 92492, 92493, 92494, 92495, 92496, 92497, 92498, 92499, 92500, 92501, 92502, 92503, 92504, 92505, 92506, 92507, 92508, 92509, 92510, 92511, 92512, 92513, 92514, 92515, 92516, 92517, 92518, 92519, 92520, 92521, 92522, 92523, 92524, 92525, 92526, 92527, 92528, 92529, 92530, 92531, 92532, 92533, 92534, 92535, 92536, 92537, 92538, 92539, 92540, 92541, 92542, 92543, 92544, 92545, 92546, 92547, 92548, 92549, 92550, 92551, 92552, 92553, 92554, 92555, 92556, 92557, 92558, 92559, 92560, 92561, 92562, 92563, 92564, 92565, 92566, 92567, 92568, 92569, 92570, 92571, 92572, 92573, 92574, 92575, 92576, 92577, 92578, 92579, 92580, 92581, 92582, 92583, 92584, 92585, 92586, 92587, 92588, 92589, 92590, 92591, 92592, 92593, 92594, 92595, 92596, 92597, 92598, 92599, 92600, 92601, 92602, 92603, 92604, 92605, 92606, 92607, 92608, 92609, 92610, 92611, 92612, 92613, 92614, 92615, 92616, 92617, 92618, 92619, 92620, 92621, 92622, 92623, 92624, 92625, 92626, 92627, 92628, 92629, 92630, 92631, 92632, 92633, 92634, 92635, 92636, 92637, 92638, 92639, 92640, 92641, 92642, 92643, 92644, 92645, 92646, 92647, 92648, 92649, 92650, 92651, 92652, 92653, 92654, 92655, 92656, 92657, 92658, 92659, 92660, 92661, 92662, 92663, 92664, 92665, 92666, 92667, 92668, 92669, 92670, 92671, 92672, 92673, 92674, 92675, 92676, 92677, 92678, 92679, 92680, 92681, 92682, 92683, 92684, 92685, 92686, 92687, 92688, 92689, 92690, 92691, 92692, 92693, 92694, 92695, 92696, 92697, 92698, 92699, 92700, 92701, 92702, 92703, 92704, 92705, 92706, 92707, 92708, 92709, 92710, 92711, 92712, 92713, 92714, 92715, 92716, 92717, 92718, 92719, 92720, 92721, 92722, 92723, 92724, 92725, 92726, 92727, 92728, 92729, 92730, 92731, 92732, 92733, 92734, 92735, 92736, 92737, 92738, 92739, 92740, 92741, 92742, 92743, 92744, 92745, 92746, 92747, 92748, 92749, 92750, 92751, 92752, 92753, 92754, 92755, 92756, 92757, 92758, 92759, 92760, 92761, 92762, 92763, 92764, 92765, 92766, 92767, 92768, 92769, 92770, 92771, 92772, 92773, 92774, 92775, 92776, 92777, 92778, 92779, 92780, 92781, 92782, 92783, 92784, 92785, 92786, 92787, 92788, 92789, 92790, 92791, 92792, 92793, 92794, 92795, 92796, 92797, 92798, 92799, 92800, 92801, 92802, 92803, 92804, 92805, 92806, 92807, 92808, 92809, 92810, 92811, 92812, 92813, 92814, 92815, 92816, 92817, 92818, 92819, 92820, 92821, 92822, 92823, 92824, 92825, 92826, 92827, 92828, 92829, 92830, 92831, 92832, 92833, 92834, 92835, 92836, 92837, 92838, 92839, 92840, 92841, 92842, 92843, 92844, 92845, 92846, 92847, 92848, 92849, 92850, 92851, 92852, 92853, 92854, 92855, 92856, 92857, 92858, 92859, 92860, 92861, 92862, 92863, 92864, 92865, 92866, 92867, 92868, 92869, 92870, 92871, 92872, 92873, 92874, 92875, 92876, 92877, 92878, 92879, 92880, 92881, 92882, 92883, 92884, 92885, 92886, 92887, 92888, 92889, 92890, 92891, 92892, 92893, 92894, 92895, 92896, 92897, 92898, 92899, 92900, 92901, 92902, 92903, 92904, 92905, 92906, 92907, 92908, 92909, 92910, 92911, 92912, 92913, 92914, 92915, 92916, 92917, 92918, 92919, 92920, 92921, 92922, 92923, 92924, 92925, 92926, 92927, 92928, 92929, 92930, 92931, 92932, 92933, 92934, 92935, 92936, 92937, 92938, 92939, 92940, 92941, 92942, 92943, 92944, 92945, 92946, 92947, 92948, 92949, 92950, 92951, 92952, 92953, 92954, 92955, 92956, 92957, 92958, 92959, 92960, 92961, 92962, 92963, 92964, 92965, 92966, 92967, 92968, 92969, 92970, 92971, 92972, 92973, 92974, 92975, 92976, 92977, 92978, 92979, 92980, 92981, 92982, 92983, 92984, 92985, 92986, 92987, 92988, 92989, 92990, 92991, 92992, 92993, 92994, 92995, 92996, 92997, 92998, 92999, 93000, 93001, 93002, 93003, 93004, 93005, 93006, 93007, 93008, 93009, 93010, 93011, 93012, 93013, 93014, 93015, 93016, 93017, 93018, 93019, 93020, 93021, 93022, 93023, 93024, 93025, 93026, 93027, 93028, 93029, 93030, 93031, 93032, 93033, 93034, 93035, 93036, 93037, 93038, 93039, 93040, 93041, 93042, 93043, 93044, 93045, 93046, 93047, 93048, 93049, 93050, 93051, 93052, 93053, 93054, 93055, 93056, 93057, 93058, 93059, 93060, 93061, 93062, 93063, 93064, 93065, 93066, 93067, 93068, 93069, 93070, 93071, 93072, 93073, 93074, 93075, 93076, 93077, 93078, 93079, 93080, 93081, 93082, 93083, 93084, 93085, 93086, 93087, 93088, 93089, 93090, 93091, 93092, 93093, 93094, 93095, 93096, 93097, 93098, 93099, 93100, 93101, 93102, 93103, 93104, 93105, 93106, 93107, 93108, 93109, 93110, 93111, 93112, 93113, 93114, 93115, 93116, 93117, 93118, 93119, 93120, 93121, 93122, 93123, 93124, 93125, 93126, 93127, 93128, 93129, 93130, 93131, 93132, 93133, 93134, 93135, 93136, 93137, 93138, 93139, 93140, 93141, 93142, 93143, 93144, 93145, 93146, 93147, 93148, 93149, 93150, 93151, 93152, 93153, 93154, 93155, 93156, 93157, 93158, 93159, 93160, 93161, 93162, 93163, 93164, 93165, 93166, 93167, 93168, 93169, 93170, 93171, 93172, 93173, 93174, 93175, 93176, 93177, 93178, 93179, 93180, 93181, 93182, 93183, 93184, 93185, 93186, 93187, 93188, 93189, 93190, 93191, 93192, 93193, 93194, 93195, 93196, 93197, 93198, 93199, 93200, 93201, 93202, 93203, 93204, 93205, 93206, 93207, 93208, 93209, 93210, 93211, 93212, 93213, 93214, 93215, 93216, 93217, 93218, 93219, 93220, 93221, 93222, 93223, 93224, 93225, 93226, 93227, 93228, 93229, 93230, 93231, 93232, 93233, 93234, 93235, 93236, 93237, 93238, 93239, 93240, 93241, 93242, 93243, 93244, 93245, 93246, 93247, 93248, 93249, 93250, 93251, 93252, 93253, 93254, 93255, 93256, 93257, 93258, 93259, 93260, 93261, 93262, 93263, 93264, 93265, 93266, 93267, 93268, 93269, 93270, 93271, 93272, 93273, 93274, 93275, 93276, 93277, 93278, 93279, 93280, 93281, 93282, 93283, 93284, 93285, 93286, 93287, 93288, 93289, 93290, 93291, 93292, 93293, 93294, 93295, 93296, 93297, 93298, 93299, 93300, 93301, 93302, 93303, 93304, 93305, 93306, 93307, 93308, 93309, 93310, 93311, 93312, 93313, 93314, 93315, 93316, 93317, 93318, 93319, 93320, 93321, 93322, 93323, 93324, 93325, 93326, 93327, 93328, 93329, 93330, 93331, 93332, 93333, 93334, 93335, 93336, 93337, 93338, 93339, 93340, 93341, 93342, 93343, 93344, 93345, 93346, 93347, 93348, 93349, 93350, 93351, 93352, 93353, 93354, 93355, 93356, 93357, 93358, 93359, 93360, 93361, 93362, 93363, 93364, 93365, 93366, 93367, 93368, 93369, 93370, 93371, 93372, 93373, 93374, 93375, 93376, 93377, 93378, 93379, 93380, 93381, 93382, 93383, 93384, 93385, 93386, 93387, 93388, 93389, 93390, 93391, 93392, 93393, 93394, 93395, 93396, 93397, 93398, 93399, 93400, 93401, 93402, 93403, 93404, 93405, 93406, 93407, 93408, 93409, 93410, 93411, 93412, 93413, 93414, 93415, 93416, 93417, 93418, 93419, 93420, 93421, 93422, 93423, 93424, 93425, 93426, 93427, 93428, 93429, 93430, 93431, 93432, 93433, 93434, 93435, 93436, 93437, 93438, 93439, 93440, 93441, 93442, 93443, 93444, 93445, 93446, 93447, 93448, 93449, 93450, 93451, 93452, 93453, 93454, 93455, 93456, 93457, 93458, 93459, 93460, 93461, 93462, 93463, 93464, 93465, 93466, 93467, 93468, 93469, 93470, 93471, 93472, 93473, 93474, 93475, 93476, 93477, 93478, 93479, 93480, 93481, 93482, 93483, 93484, 93485, 93486, 93487, 93488, 93489, 93490, 93491, 93492, 93493, 93494, 93495, 93496, 93497, 93498, 93499, 93500, 93501, 93502, 93503, 93504, 93505, 93506, 93507, 93508, 93509, 93510, 93511, 93512, 93513, 93514, 93515, 93516, 93517, 93518, 93519, 93520, 93521, 93522, 93523, 93524, 93525, 93526, 93527, 93528, 93529, 93530, 93531, 93532, 93533, 93534, 93535, 93536, 93537, 93538, 93539, 93540, 93541, 93542, 93543, 93544, 93545, 93546, 93547, 93548, 93549, 93550, 93551, 93552, 93553, 93554, 93555, 93556, 93557, 93558, 93559, 93560, 93561, 93562, 93563, 93564, 93565, 93566, 93567, 93568, 93569, 93570, 93571, 93572, 93573, 93574, 93575, 93576, 93577, 93578, 93579, 93580, 93581, 93582, 93583, 93584, 93585, 93586, 93587, 93588, 93589, 93590, 93591, 93592, 93593, 93594, 93595, 93596, 93597, 93598, 93599, 93600, 93601, 93602, 93603, 93604, 93605, 93606, 93607, 93608, 93609, 93610, 93611, 93612, 93613, 93614

Telehealth Modifier: GQ, GT, 95, POS 02

NUMERATOR:

Patient visits where patients were screened for high blood pressure AND have a recommended follow-up plan documented, as indicated, if the blood pressure is pre-hypertensive or hypertensive

Definitions:

Blood Pressure (BP) Classification – BP is defined by four (4) BP reading classifications: Normal, Pre- Hypertensive, First Hypertensive, and Second Hypertensive Readings

Recommended BP Follow-Up – The Joint National Committee on the Prevention, Detection, Evaluation, and Treatment of High Blood Pressure (JNC 7) recommends BP screening intervals, lifestyle modifications and interventions based on the current BP reading as listed in the “Recommended Blood Pressure Follow-Up Interventions” listed below

Recommended Lifestyle Modifications – The JNC 7 report outlines lifestyle modifications which must include one or more of the following as indicated:

- Weight Reduction
- Dietary Approaches to Stop Hypertension (DASH) Eating Plan
- Dietary Sodium Restriction
- Increased Physical Activity
- Moderation in alcohol (ETOH) Consumption

Second Hypertensive Reading – Requires a BP reading of systolic BP \geq 140 mmHg OR diastolic BP \geq 90 mmHg during the current encounter AND a most recent BP reading within the last 12 months systolic BP \geq 140 mmHg OR diastolic BP \geq 90 mmHg

Second Hypertensive Reading BP Interventions – The JNC 7 report outlines BP follow-up interventions for a second hypertensive BP reading and **must** include one or more of the following as indicated:

- Anti-Hypertensive Pharmacologic Therapy
- Laboratory Tests
- Electrocardiogram (ECG)

Recommended Blood Pressure Follow-up Interventions –

- Normal BP: No follow-up required for systolic BP $<$ 120 mmHg AND diastolic BP $<$ 80 mmHg
- Pre-Hypertensive BP: Follow-up with rescreen every year with systolic BP of 120-139 mmHg OR diastolic BP of 80-89 mmHg AND recommended lifestyle modifications OR referral to Alternate/Primary Care Provider
- First Hypertensive BP Reading: Patients with one elevated reading of systolic BP \geq 140 mmHg OR diastolic BP \geq 90 mmHg:
 - Follow-up with rescreen $>$ 1 day and $<$ 4 weeks AND recommend lifestyle modifications OR referral to Alternative/Primary Care Provider
- Second Hypertensive BP Reading: Patients with second elevated reading of systolic BP \geq 140 mmHg OR diastolic BP \geq 90 mmHg:
 - Follow-up with Recommended lifestyle recommendations AND one or more of the Second Hypertensive Reading Interventions OR referral to Alternative/Primary Care Provider

Recommended Blood Pressure Follow-Up Table

BP Classification	Systolic BP mmHg	Diastolic BP mmHg	Recommended Follow-Up <i>(must include all indicated actions for each BP Classification)</i>
Normal BP Reading	< 120	AND < 80	No Follow-Up required
Pre-Hypertensive BP Reading	≥ 120 AND ≤ 139	OR ≥ 80 AND ≤ 89	Rescreen BP every year AND recommended lifestyle modifications OR Referral to Alternative/Primary Care Provider
First Hypertensive BP Reading	≥ 140	OR ≥ 90	Rescreen BP > 1 day and < 4 weeks AND recommended lifestyle modifications OR Referral to Alternative/Primary Care Provider
Second Hypertensive BP Reading	≥ 140	OR ≥ 90	Recommended lifestyle recommendations AND one or more of the Second Hypertensive Reading Interventions (anti-hypertensive pharmacologic therapy, laboratory tests, electrocardiogram [ECG]) OR Referral to Alternative/Primary Care Provider

***Not Eligible for High Blood Pressure Screening (Denominator Exclusion) –**

- Patient has an active diagnosis of hypertension starts prior to the current encounter

****Patients with a Documented Reason for not Screening or no Follow-Up Plan for High Blood Pressure (Denominator Exception) –**

- Documentation of medical reason(s) for not screening for high blood pressure (e.g., patient is in an urgent or emergent medical situation where time is of the essence and to delay treatment would jeopardize the patient's health status).
- Documentation of patient reason(s) for not screening for blood pressure measurements or for not ordering an appropriate follow-up intervention if patient is pre-hypertensive or hypertensive (e.g., patient refuses).

NUMERATOR NOTE: Although the recommended screening interval for a normal BP reading is every 2 years, to meet the intent of this measure, BP screening and follow-up must be performed at every patient visit. For patients with Normal blood pressure, a follow-up plan is not required (**G8783**). Denominator Exception(s) are determined on the date of the denominator eligible encounter.

Numerator Quality-Data Coding Options:

***Screening for High Blood Pressure not Documented, Patient not Eligible**

Denominator Exclusion: G9744: Patient not eligible due to active diagnosis of hypertension

OR

Normal Blood Pressure Reading Documented, Follow-Up not Required

Performance Met: G8783: Normal blood pressure reading documented, follow-up not

required

OR

Pre-Hypertensive or Hypertensive Blood Pressure Reading Documented, AND Indicated Follow-Up Documented

Performance Met: G8950:

Pre-Hypertensive or Hypertensive blood pressure reading documented, AND the indicated follow-up is documented

OR

****Screening or Follow-Up for High Blood Pressure not Completed, Documented Reason**

Denominator Exception: G9745:

Documented reason for not screening or recommending a follow-up for high blood pressure

OR

Blood Pressure Reading not Documented, Reason not Given

Performance Not Met: G8785:

Blood pressure reading not documented, reason not given

OR

Pre-Hypertensive or Hypertensive Blood Pressure Reading Documented, Indicated Follow-Up not Documented, Reason not Given

Performance Not Met: G8952:

Pre-Hypertensive or Hypertensive blood pressure reading documented, indicated follow-up not documented, reason not given

RATIONALE:

Hypertension is a prevalent condition that affects approximately 66.9 million people in the United States. It is estimated that about 20-40% of the adult population has hypertension; the majority of people over age 65 have a hypertension diagnosis (Appleton SL, et al., 2012 and Luehr D, et al., 2012). Winter (2013) noted that 1 in 3 American adults have hypertension and the lifetime risk of developing hypertension is 90% (Winter KH, et al., 2013). The African American population or non-Hispanic Blacks, the elderly, diabetics and those with chronic kidney disease are at increased risk of stroke, myocardial infarction and renal disease. Non-Hispanic Blacks have the highest prevalence at 38.6% (Winter KH, et al., 2013). Hypertension is a major risk factor for ischemic heart disease, left ventricular hypertrophy, renal failure, stroke and dementia (Luehr D, et al., 2012).

Hypertension is the most common reason for adult office visits other than pregnancy. Garrison (2013) stated that in 2007, 42 million ambulatory visits were attributed to hypertension (Garrison GM and Oberhelman S, 2013). It also has the highest utilization of prescription drugs. Numerous resources and treatment options are available, yet only about 40-50% of the hypertensive patients have their blood pressure under control (<140/90) (Appleton SL, et al., 2012, Luehr D, et al., 2012). In addition to medication non-compliance, poor outcomes are also attributed to poor adherence to lifestyle changes such as a low-sodium diet, weight loss, increased exercise and limiting alcohol intake. Many adults find it difficult to continue medications and lifestyle changes when they are asymptomatic. Symptoms of elevated blood pressure usually do not occur until secondary problems arise such as with vascular diseases (myocardial infarction, stroke, heart failure and renal insufficiency) (Luehr D, et al., 2012).

Appropriate follow-up after blood pressure measurement is a pivotal component in preventing the progression of hypertension and the development of heart disease. Detection of marginally or fully elevated blood pressure by a specialty clinician warrants referral to a provider familiar with the management of hypertension and prehypertension. The 2010 ACCF/AHA Guideline for the Assessment of Cardiovascular Risk in Asymptomatic Adults continues to support using a global risk score such as the Framingham Risk Score, to assess risk of coronary heart disease (CHD) in all asymptomatic adults (Greenland P, et al., 2010). Lifestyle modifications have demonstrated effectiveness in lowering blood pressure (JNC 7, 2003). The synergistic effect of several lifestyle modifications results in greater benefits than a single modification alone. Baseline diagnostic/laboratory testing establishes if a co-existing underlying condition is the etiology of hypertension and evaluates if end organ damage from hypertension has already occurred. Landmark trials such as ALLHAT have repeatedly proven the efficacy of pharmacologic therapy to control blood pressure and reduce the complications of hypertension. Follow-up intervals based on blood pressure control have been established by the JNC 7 and the USPSTF.

CLINICAL RECOMMENDATION STATEMENTS:

The U.S. Preventive Services Task Force (USPSTF) recommends screening for high blood pressure in adults age 18 years and older. This is a grade A recommendation.

COPYRIGHT:

These performance measures are not clinical guidelines and do not establish a standard of medical care, and have not been tested for all potential applications.

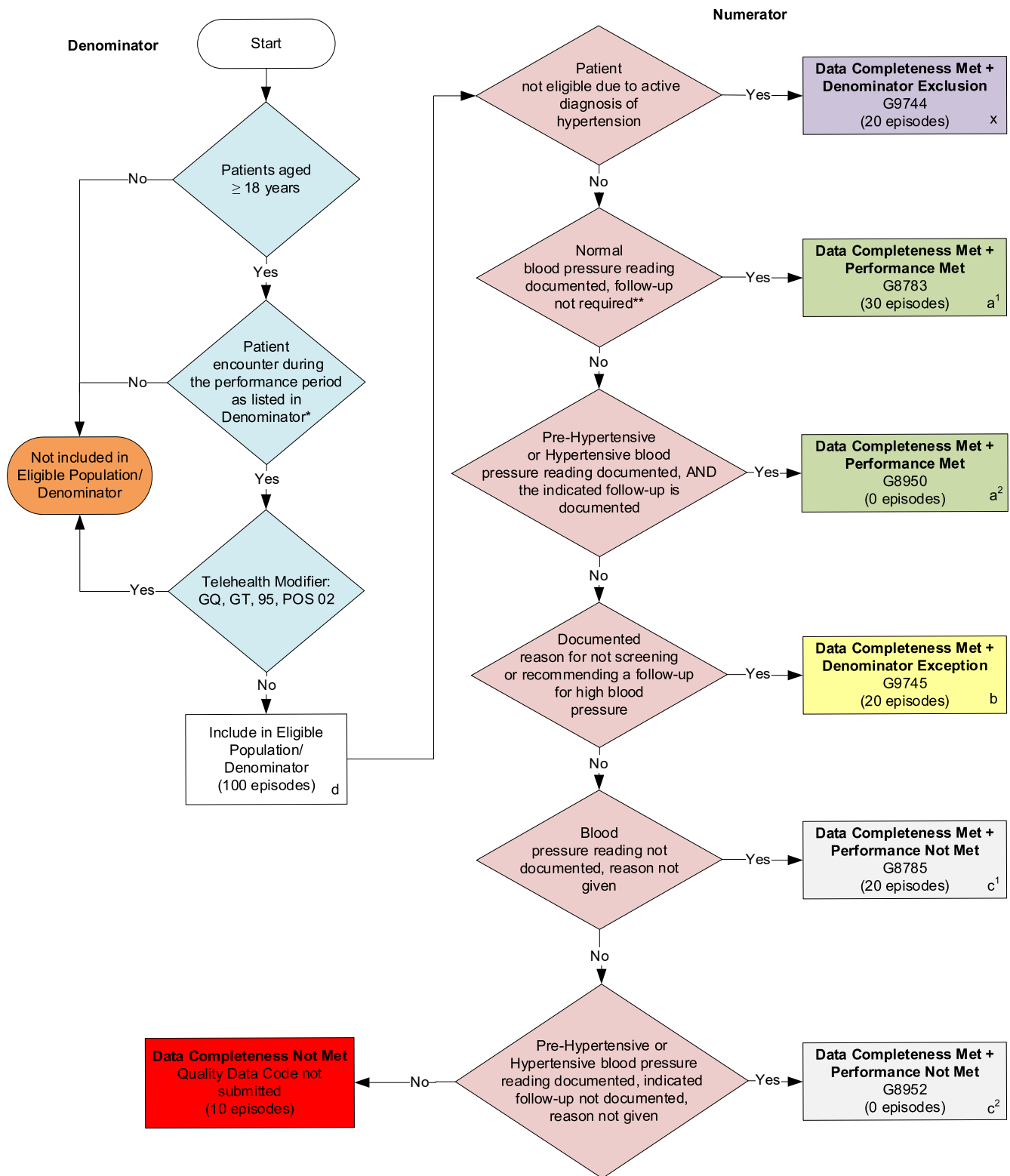
THE MEASURES AND SPECIFICATIONS ARE PROVIDED “AS IS” WITHOUT WARRANTY OF ANY KIND.

Limited proprietary coding is contained in the measure specifications for convenience. Users of the proprietary code sets should obtain all necessary licenses from the owners of these code sets. PCPI disclaims all liability for use or accuracy of any Current Procedural Terminology (CPT®) or other coding contained in the specifications.

CPT® contained in the Measure specifications is copyright 2004-2020 American Medical Association. LOINC® is copyright 2004-2020 Regenstrief Institute, Inc. This material contains SNOMED Clinical Terms® (SNOMED CT®) copyright 2004-2020 International Health Terminology Standards Development Organisation. ICD-10 is copyright 2020 World Health Organization. All Rights Reserved.

2021 Medicare Part B Claims Flow #317: Preventive Care and Screening: Screening for High Blood Pressure and Follow-Up Documented

Disclaimer: Refer to the measure specification for specific coding and instructions to submit this measure.



SAMPLE CALCULATIONS

Data Completeness Rate=

$$\frac{\text{Denominator Exclusion}(x=20 \text{ episodes}) + \text{Performance Met}(a^1+a^2=30 \text{ episodes}) + \text{Denominator Exception}(b=20 \text{ episodes}) + \text{Performance Not Met}(c^1+c^2=20 \text{ episodes})}{\text{Eligible Population / Denominator } (d=100 \text{ episodes})} = \frac{90 \text{ episodes}}{100 \text{ episodes}} = 90.00\%$$

Performance Rate=

$$\frac{\text{Performance Met } (a^1+a^2=30 \text{ episodes})}{\text{Data Completeness Numerator } (90 \text{ episodes}) - \text{Denominator Exclusion } (x=20 \text{ episodes}) - \text{Denominator Exception } (b=20 \text{ episodes})} = \frac{30 \text{ episodes}}{50 \text{ episodes}} = 60.00\%$$

*See the posted measure specification for specific coding and instructions to submit this measure.

** See the posted measure specification for recommended specific blood pressure screening intervals, as well as definitions for exclusion criteria for this measure.

NOTE: Submission Frequency: Episode

CPT only copyright 2020 American Medical Association. All rights reserved.
The measure diagrams were developed by CMS as a supplemental resource to be used in conjunction with the measure specifications. They should not be used alone or as a substitution for the measure specification.

v5

**2021 Medicare Part B Claims Flow Narrative For Quality ID #317:
Preventive Care and Screening: Screening for High Blood Pressure and Follow-Up Documented**

Disclaimer: Refer to the measure specification for specific coding and instructions to submit this measure.

1. Start with Denominator
2. Check *Patients aged greater than or equal to 18 years*:
 - a. If *Patients aged greater than or equal to 18 years* equals No, do not include in *Eligible Population/Denominator*. Stop processing.
 - b. If *Patients aged greater than or equal to 18 years* equals Yes, proceed to check *Patient encounter during the performance period as listed in Denominator**.
3. Check *Patient encounter during the performance period as listed in Denominator**:
 - a. If *Patient encounter during the performance period as listed in Denominator** equals No, do not include in *Eligible Population/Denominator*. Stop processing.
 - b. If *Patient encounter during the performance period as listed in Denominator** equals Yes, proceed to check *Telehealth Modifier*.
4. Check *Telehealth Modifier*:
 - a. If *Telehealth Modifier* equals No, include in *Eligible Population/Denominator*.
 - b. If *Telehealth Modifier* equals Yes, do not include in *Eligible Population/Denominator*. Stop processing.
5. Denominator Population:
 - a. Denominator Population is all Eligible Patients in the Denominator. Denominator is represented as Denominator in the Sample Calculation listed at the end of this document. Letter d equals 100 episodes in the Sample Calculation.
6. Start Numerator
7. Check *Patient not eligible due to active diagnosis of hypertension*:
 - a. If *Patient not eligible due to active diagnosis of hypertension* equals Yes, include in *Data Completeness Met and Denominator Exclusion*.
 - *Data Completeness Met and Denominator Exclusion* is represented as Data Completeness and Performance Rate in the Sample Calculation listed at the end of this document. Letter x equals 20 episodes in the Sample Calculation.
 - b. If *Patient not eligible due to active diagnosis of hypertension* equals No, proceed to check *Normal blood pressure reading documented, follow-up not required***.
8. Check *Normal blood pressure reading documented, follow-up not required***:
 - a. If *Normal blood pressure reading documented, follow-up not required*** equals Yes, include in *Data Completeness Met and Performance Met*.
 - *Data Completeness Met and Performance Met* letter is represented as Data Completeness and Performance Rate in the Sample Calculation listed at the end of this document. Letter a¹ equals

30 episodes in the Sample Calculation.

- b. If *Normal blood pressure reading documented, follow-up not required*** equals No, proceed to check *Pre-Hypertensive or Hypertensive blood pressure reading documented, AND the indicated follow-up is documented*.
9. Check *Pre-Hypertensive or Hypertensive blood pressure reading documented, AND the indicated follow-up is documented*:
 - a. If *Pre-Hypertensive or Hypertensive blood pressure reading documented, AND the indicated follow-up is documented* equals Yes, include in *Data Completeness Met and Performance Met*.
 - *Data Completeness Met and Performance Met* letter is represented as Data Completeness and Performance Rate in the Sample Calculation listed at the end of this document. Letter a² equals 0 episodes in the Sample Calculation.
 - b. If *Pre-Hypertensive or Hypertensive blood pressure reading documented, AND the indicated follow-up is documented* equals No, proceed to check *Documented reason for not screening or recommending a follow-up for high blood pressure*.
10. Check *Documented reason for not screening or recommending a follow-up for high blood pressure*:
 - a. If *Documented reason for not screening or recommending a follow-up for high blood pressure* equals Yes, include in *Data Completeness Met and Denominator Exception*.
 - *Data Completeness Met and Denominator Exception* is represented as Data Completeness and Performance Rate in the Sample Calculation listed at the end of this document. Letter b equals 20 episodes in the Sample Calculation.
 - b. If *Documented reason for not screening or recommending a follow-up for high blood pressure* equals No, proceed to check *Blood pressure reading not documented, reason not given*.
11. Check *Blood pressure reading not documented, reason not given*:
 - a. If *Blood pressure reading not documented, reason not given* equals Yes, include in *Data Completeness Met and Performance Not Met*.
 - *Data Completeness Met and Performance Not Met* is represented as Data Completeness in the Sample Calculation listed at the end of this document. Letter c¹ equals 20 episodes in the Sample Calculation.
 - b. If *Blood pressure reading not documented, reason not given* equals No, proceed to check *Pre- Hypertensive or Hypertensive blood pressure reading documented, indicated follow-up not documented, reason not given*.
12. Check *Pre- Hypertensive or Hypertensive blood pressure reading documented, indicated follow-up not documented, reason not given*:
 - a. If *Pre- Hypertensive or Hypertensive blood pressure reading documented, indicated follow-up not documented, reason not given* equals Yes, include in *Data Completeness Met and Performance Not Met*.
 - *Data Completeness Met and Performance Not Met* is represented as Data Completeness in the Sample Calculation listed at the end of this document. Letter c² equals 0 episodes in the Sample Calculation.
 - b. If *Pre- Hypertensive or Hypertensive blood pressure reading documented, indicated follow-up not documented,*

reason not given equals No, proceed to check Data Completeness Not Met.

13. Check *Data Completeness Not Met*:

- a. If *Data Completeness Not Met*, the Quality Data Code was not submitted. 10 episodes have been subtracted from the Data Completeness Numerator in the Sample Calculation.

Sample Calculations:

Data Completeness Rate equals Denominator Exclusion (x equals 20 episodes) plus Performance Met (a¹ plus a² equals 30 episodes) plus Denominator Exception (b equals 20 episodes) plus Performance Not Met (c¹ plus c² equals 20 episodes) divided by Eligible Population/Denominator (d equals 100 episodes). All equals 90 episodes divided by 100 episodes. All equals 90.00 percent.

Performance Rate equals Performance Met (a¹ plus a² equals 30 episodes) divided by Data Completeness Numerator (90 episodes) minus Denominator Exclusion (x equals 20 episodes) minus Denominator Exception (b equals 20 episodes). All equals 30 episodes divided by 50 episodes. All equals 60.00 percent.

*See the posted measure specification for specific coding and instructions to submit this measure.

** See the posted measure specification for recommended specific blood pressure screening intervals, as well as definitions for exclusion criteria for this measure.

NOTE: Submission Frequency: Episode

The measure diagrams were developed by CMS as a supplemental resource to be used in conjunction with the measure specifications. They should not be used alone or as a substitution for the measure specification.