

Quality ID #141 (NQF 0563): Primary Open-Angle Glaucoma (POAG): Reduction of Intraocular Pressure (IOP) by 15% OR Documentation of a Plan of Care

- National Quality Strategy Domain: Communication and Care Coordination
- Meaningful Measure Area: Management of Chronic Conditions

2021 COLLECTION TYPE:
MEDICARE PART B CLAIMS

MEASURE TYPE:
Outcome – High Priority

DESCRIPTION:
Percentage of patients aged 18 years and older with a diagnosis of primary open-angle glaucoma (POAG) whose glaucoma treatment has not failed (the most recent IOP was reduced by at least 15% from the pre-intervention level) OR if the most recent IOP was not reduced by at least 15% from the pre-intervention level, a plan of care was documented within the 12 month performance period

INSTRUCTIONS:
This measure is to be submitted a minimum of **once per performance period** for glaucoma patients seen during the performance period. It is anticipated that Merit-based Incentive Payment System (MIPS) eligible clinicians who provide the primary management of patients with POAG will submit this measure.

Measure Submission Type:
Measure data may be submitted by individual MIPS eligible clinicians using Medicare Part B claims. The listed denominator criteria are used to identify the intended patient population. The numerator quality-data codes included in this specification are used to submit the quality actions allowed by the measure on the claim form(s). All measure-specific coding should be submitted on the claim(s) representing the denominator eligible encounter and selected numerator option.

DENOMINATOR:
All patients aged 18 years and older with a diagnosis of primary open-angle glaucoma

Denominator Criteria (Eligible Cases):
Patients aged ≥ 18 years on date of encounter

AND
Diagnosis for primary open-angle glaucoma (ICD-10-CM): H40.1111, H40.1112, H40.1113, H40.1114, H40.1121, H40.1122, H40.1123, H40.1124, H40.1131, H40.1132, H40.1133, H40.1134, H40.1211, H40.1212, H40.1213, H40.1214, H40.1221, H40.1222, H40.1223, H40.1224, H40.1231, H40.1232, H40.1233, H40.1234, H40.151, H40.152, H40.153

AND
Patient encounter during the performance period (CPT): 92002, 92004, 92012, 92014, 99202, 99203, 99204, 99205, 99212, 99213, 99214, 99215, 99307, 99308, 99309, 99310, 99324, 99325, 99326, 99327, 99328, 99334, 99335, 99336, 99337

WITHOUT
Telehealth Modifier: GQ, GT, 95, POS 02

NUMERATOR:
Patients whose glaucoma treatment has not failed (the most recent IOP was reduced by at least 15% from the pre-intervention level) OR if the most recent IOP was not reduced by at least 15% from the pre-intervention level, a plan of care was documented within the 12 month performance period.

outcomes, ranging from 18% in the “normal pressure” subpopulation of EMGT to 42% in the CIGTS study. (Level I studies) As such, an appropriate “failure” indicator is to NOT achieve at least a 15% IOP reduction. The rationales for a failure indicator are that 1) the results of different studies can lead experienced clinicians to believe that different levels of IOP reduction are appropriate; 2) to minimize the impact of adverse selection for those patients whose IOPs are more difficult to control; and 3) because each patient’s clinical course may require IOP reduction that may vary from 18 to 40+%.

In addition, “...several population-based studies have demonstrated that the prevalence of POAG as well as the incidence of POAG, increases as the level of IOP increases. These studies provide strong evidence that IOP plays an important role in the neuropathy of POAG. Furthermore, studies have demonstrated that reduction in the level of IOP lessens the risk of visual field progression in open-angle glaucoma. In addition, treated eyes that have a greater IOP fluctuation are at increased risk of progression.

Intraocular pressure is the intermediate outcome of therapy used by the FDA for approval of new drugs and devices and, as noted above, has been shown to be directly related to ultimate patient outcomes of vision loss. As such, failure to achieve minimal pressure lowering, absent an appropriate plan of care to address the situation, would constitute performance whose improvement would directly benefit patients with POAG.

2. Evidence for gap in care

Based on studies in the literature reviewing documentation of IOP achieved under care, the gap could be as great as 50% or more in the community of ophthalmologists and optometrists treating patients with primary open-angle glaucoma. Based on loose criteria for control, IOP was controlled in 66% of follow-up visits for patients with mild glaucoma and 52% of visits for patients with moderate to severe glaucoma.

Another study of a single comprehensive insurance plan suggested that a large proportion of individuals felt to require treatment for glaucoma or suspect glaucoma are falling out of care and are being monitored at rates lower than expected from recommendations of published guidelines.

CLINICAL RECOMMENDATION STATEMENTS:

The goal of treatment is to maintain the IOP in a range at which visual field loss is unlikely to significantly reduce a patient’s health-related quality of life over his or her lifetime. (II+, moderate quality, discretionary recommendation)

The estimated upper limit of this range is considered the “target pressure.” The initial target pressure is an estimate and a means toward the ultimate goal of protecting the patient’s vision. The target pressure should be individualized and may need adjustment further down or even up during the course of the disease. (III, insufficient quality, discretionary recommendation)

When initiating therapy, the ophthalmologist assumes that the measured pretreatment pressure range contributed to optic nerve damage and is likely to cause additional damage in the future. Factors to consider when choosing a target pressure include the stage of overall glaucoma damage as determined by the degree of structural optic nerve injury and/or functional visual field loss, baseline IOP at which damage occurred, age of patient, and additional risk factors (e.g., central corneal thickness (CCT), life expectancy, prior rate of progression). Lowering the pretreatment IOP by 25% or more has been shown to slow progression of POAG.

Choosing a lower target IOP can be justified if there is more severe optic nerve damage, if the damage is progressing rapidly, or if other risk factors such as family history, age, or disc hemorrhages are present.

Prum BE Jr, Rosenberg LF, Gedde SJ, et al. Primary Open-Angle Glaucoma Preferred Practice Pattern® Guidelines. *Ophthalmology* 2016;123:P41-P111.

The intent of this measure is to have this indicator apply to both optometrists and ophthalmologists (and any other physician who provides glaucoma care); the use of “ophthalmologists” only in the preceding verbatim section reflects the wording in the American Academy of Ophthalmology Preferred Practice pattern.

COPYRIGHT:

The measure is not clinical guidelines, does not establish a standard of medical care, and has not been tested for all potential applications.

The measure, while copyrighted, can be reproduced and distributed, without modification, for noncommercial purposes, eg, use by health care providers in connection with their practices. Commercial use is defined as the sale, license, or distribution of the measure for commercial gain, or incorporation of the measure into a product or service that is sold, licensed or distributed for commercial gain.

Commercial uses of the measure require a license agreement between the user and the American Academy of Ophthalmology (AAO). Neither the AAO, nor its members, shall be responsible for any use of the measure.

The American Medical Association’s and PCPI® Foundation’s significant past efforts and contributions to the development and updating of the measure is acknowledged. AAO is solely responsible for the review and enhancement (“Maintenance”) of the measure as of May 15, 2014.

AAO encourages use of the measure by other health care professionals, where appropriate.

THE MEASURE AND SPECIFICATIONS ARE PROVIDED “AS IS” WITHOUT WARRANTY OF ANY KIND.

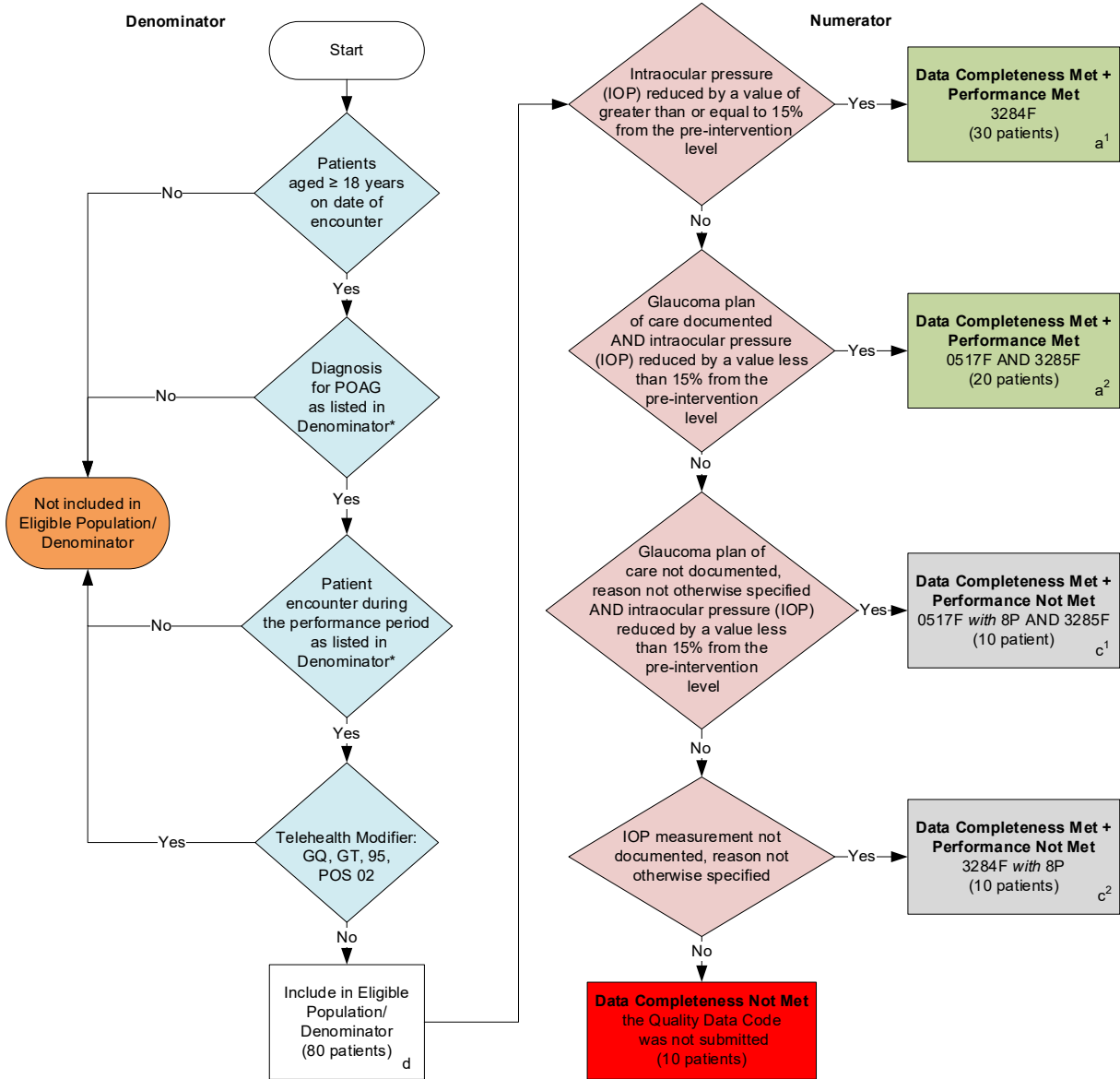
© 2007-2021 American Academy of Ophthalmology. All Rights Reserved. Applicable FARS/DFARS Restrictions Apply to Government Use.

Limited proprietary coding is contained in the measure specifications for convenience. Users of the proprietary code sets should obtain all necessary licenses from the owners of these code sets. The AAO and its members disclaim all liability for use or accuracy of any Current Procedural Terminology (CPT®) or other coding contained in the specifications.

CPT® contained in the Measure specifications is copyright 2004-2020 American Medical Association. ICD-10 is copyright 2020 World Health Organization. All Rights Reserved.

**2021 Medicare Part B Claims Flow for Quality ID #141 (NQF 0563):
Primary Open-Angle Glaucoma (POAG): Reduction of Intraocular Pressure (IOP) by 15% OR
Documentation of a Plan of Care**

Disclaimer: Refer to the measure specification for specific coding and instructions to submit this measure.



SAMPLE CALCULATIONS

Data Completeness=

$$\frac{\text{Performance Met (a}^1+\text{a}^2=50 \text{ patients)} + \text{Performance Not Met (c}^1+\text{c}^2=20 \text{ patients)}}{\text{Eligible Population / Denominator (d=80 patients)}} = \frac{70 \text{ patients}}{80 \text{ patients}} = 87.50\%$$

Performance Rate=

$$\frac{\text{Performance Met (a}^1+\text{a}^2=50 \text{ patients)}}{\text{Data Completeness Numerator (70 patients)}} = \frac{50 \text{ patients}}{70 \text{ patients}} = 71.43\%$$

*See the posted measure specification for specific coding and instructions to submit this measure.
 NOTE: Submission Frequency: Patient-Process

CPT only copyright 2020 American Medical Association. All rights reserved.
 The measure diagrams were developed by CMS as a supplemental resource to be used in conjunction with the measure specifications. They should not be used alone or as a substitution for the measure specification.

**2021 Medicare Part B Claims Flow Narrative for Quality ID #141 (NQF 0563):
Primary Open-Angle Glaucoma (POAG): Reduction of Intraocular Pressure (IOP) by 15% OR
Documentation of a Plan of Care**

Disclaimer: Refer to the measure specification for specific coding and instructions to submit this measure.

1. Start with Denominator
2. Check *Patient aged greater than or equal to 18 years on date of encounter*.
 - a. If *Patient aged greater than or equal to 18 years on date of encounter* equals No, do not include in *Eligible Population/Denominator*. Stop processing.
 - b. If *Patient aged greater than or equal to 18 years on date of encounter* equals Yes, proceed to check *Diagnosis for POAG as listed in the Denominator*.
3. Check *Diagnosis for POAG as listed in the Denominator*.
 - a. If *Diagnosis for POAG as listed in the Denominator* equals No, do not include in *Eligible Population/Denominator*. Stop processing.
 - b. If *Diagnosis for POAG as listed in the Denominator* equals Yes, proceed to check *Patient encounter during the performance period as listed in the Denominator*.
4. Check *Patient encounter during the performance period as listed in the Denominator*.
 - a. If *Patient encounter during the performance period as listed in the Denominator* equals No, do not include in *Eligible Population/Denominator*. Stop processing.
 - b. If *Patient encounter during the performance period as listed in the Denominator* equals Yes, proceed to check *Telehealth Modifier*.
5. Check *Telehealth Modifier*.
 - a. If *Telehealth Modifier* equals Yes, do not include in *Eligible Population/Denominator*. Stop processing.
 - b. If *Telehealth Modifier* equals No, include in *Eligible Population/Denominator*.
6. Denominator Population:
 - a. Denominator Population is all Eligible Patients in the Denominator. Denominator is represented as Denominator in the Sample Calculation listed at the end of this document. Letter d equals 80 patients in the Sample Calculation.
7. Start Numerator
8. Check *Intraocular pressure (IOP) reduced by a value of greater than or equal to 15 percent from the pre-intervention level*:
 - a. If *Intraocular pressure (IOP) reduced by a value of greater than or equal to 15 percent from the pre-intervention level* equals Yes, include in *Data Completeness Met and Performance Met*.
 - *Data Completeness Met and Performance Met* letter is represented in the Data Completeness and Performance Rate in the Sample Calculation listed at the end of this document. Letter a¹ equals 30 patients in the Sample Calculation.

- b. If *Intraocular pressure (IOP) reduced by a value of greater than or equal to 15 percent from the pre-intervention level* equals No, proceed to check *Glaucoma plan of care documented AND intraocular pressure (IOP) reduced by a value less than 15% from the pre-intervention level*.
9. Check *Glaucoma plan of care documented AND intraocular pressure (IOP) reduced by a value less than 15% from the pre-intervention level*:
 - a. If *Glaucoma plan of care documented AND intraocular pressure (IOP) reduced by a value less than 15% from the pre-intervention level* equals Yes, include in *Data Completeness Met and Performance Met*.
 - *Data Completeness Met and Performance Met* letter is represented in the Data Completeness and Performance Rate in the Sample Calculation listed at the end of this document. Letter a² equals 20 patients in the Sample Calculation.
 - b. If *Glaucoma plan of care documented AND intraocular pressure (IOP) reduced by a value less than 15% from the pre-intervention level* equals No, proceed to check *Glaucoma plan of care not documented, reason not otherwise specified AND intraocular pressure (IOP) reduced by a value less than 15% from the pre-intervention level*.
10. Check *Glaucoma plan of care not documented, reason not otherwise specified AND intraocular pressure (IOP) reduced by a value less than 15% from the pre-intervention level*:
 - a. If *Glaucoma plan of care not documented, reason not otherwise specified AND intraocular pressure (IOP) reduced by a value less than 15% from the pre-intervention level* equals Yes, include in *Data Completeness Met and Performance Not Met*.
 - *Data Completeness Met and Performance Not Met* letter is represented in the Data Completeness in the Sample Calculation listed at the end of this document. Letter c¹ equals 10 patients in the Sample Calculation.
 - b. If *Glaucoma plan of care not documented, reason not otherwise specified AND intraocular pressure (IOP) reduced by a value less than 15% from the pre-intervention level* equals No, proceed to check *IOP measurement not documented, reason not otherwise specified*.
11. Check *IOP measurement not documented, reason not otherwise specified*:
 - a. If *IOP measurement not documented, reason not otherwise specified* equals Yes, include in the *Data Completeness Met and Performance Not Met*.
 - *Data Completeness Met and Performance Not Met* letter is represented in the Data Completeness in the Sample Calculation listed at the end of this document. Letter c² equals 10 patients in the Sample Calculation.
 - b. If *IOP measurement not documented, reason not otherwise specified* equals No, proceed to check *Data Completeness Not Met*.
12. Check *Data Completeness Not Met*:
 - a. If *Data Completeness Not Met*, the Quality Data Code was not submitted. 10 patients have been subtracted from the Data Completeness Numerator in the Sample Calculation.

Sample Calculations

Data Completeness equals Performance Met (a^1 plus a^2 equals 50 patients) plus Performance Not Met (c^1 plus c^2 equals 20 patients) divided by Eligible Population/Denominator (d equals 80 patients). All equals 70 patients divided by 80 patients. All equals 87.5 percent.

Performance Rate equals Performance Met (a^1 plus a^2 equals 50 patients) divided by Data Completeness Numerator (70 patients). All equals 50 patients divided by 70 patients. All equals 71.43 percent.

*See the posted measure specification for specific coding and instructions to submit this measure.

NOTE: Submission Frequency: Patient-Process

The measure diagrams were developed by CMS as a supplemental resource to be used in conjunction with the measure specifications. They should not be used alone or as a substitution for the measure specification.