

Quality ID #117 (NQF 0055): Diabetes: Eye Exam

– National Quality Strategy Domain: Effective Clinical Care

– Meaningful Measure Area: Management of Chronic Conditions

2021 COLLECTION TYPE:

MEDICARE PART B CLAIMS

MEASURE TYPE:

Process

DESCRIPTION:

Percentage of patients 18-75 years of age with diabetes and an active diagnosis of retinopathy overlapping the measurement period who had a retinal or dilated eye exam by an eye care professional during the measurement period or diabetics with no diagnosis of retinopathy overlapping the measurement period who had a retinal or dilated eye exam by an eye care professional during the measurement period or in the 12 months prior to the measurement period

INSTRUCTIONS:

This measure is to be submitted a minimum of **once per performance period** for patients with diabetes mellitus seen during the performance period. This measure may be submitted by Merit-based Incentive Payment System (MIPS) eligible clinicians who perform the quality actions described in the measure based on services provided and the measure-specific denominator coding.

NOTE: Patient encounters for this measure conducted via telehealth (e.g., encounters coded with GQ, GT, 95, or POS 02 modifiers) are allowable.

Measure Submission Type:

Measure data may be submitted by individual MIPS eligible clinicians using Medicare Part B claims. The listed denominator criteria are used to identify the intended patient population. The numerator quality-data codes included in this specification are used to submit the quality actions allowed by the measure on the claim form(s). All measure-specific coding should be submitted on the claim(s) representing the denominator eligible encounter and selected numerator option.

DENOMINATOR:

Patients 18 - 75 years of age with diabetes with a visit during the measurement period

DENOMINATOR NOTE: *Signifies that this CPT Category I code is a non-covered service under the Physician Fee Schedule (PFS). These non-covered services will not be counted in the denominator population for Medicare Part B claims measures

Denominator Criteria (Eligible Cases):

Patients 18 to 75 years of age on date of encounter

AND

Diagnosis for diabetes (ICD-10-CM): E10.10, E10.11, E10.21, E10.22, E10.29, E10.311, E10.319, E10.3211, E10.3212, E10.3213, E10.3219, E10.3291, E10.3292, E10.3293, E10.3299, E10.3311, E10.3312, E10.3313, E10.3319, E10.3391, E10.3392, E10.3393, E10.3399, E10.3411, E10.3412, E10.3413, E10.3419, E10.3491, E10.3492, E10.3493, E10.3499, E10.3511, E10.3512, E10.3513, E10.3519, E10.3521, E10.3522, E10.3523, E10.3529, E10.3531, E10.3532, E10.3533, E10.3539, E10.3541, E10.3542, E10.3543, E10.3549, E10.3551, E10.3552, E10.3553, E10.3559, E10.3591, E10.3592, E10.3593, E10.3599, E10.36, E10.37X1, E10.37X2, E10.37X3, E10.37X9, E10.39, E10.40, E10.41, E10.42, E10.43, E10.44, E10.49, E10.51, E10.52, E10.59, E10.610, E10.618, E10.620, E10.621, E10.622, E10.628, E10.630, E10.638, E10.641, E10.649, E10.65, E10.69, E10.8, E10.9, E11.00, E11.01, E11.21, E11.22, E11.29, E11.311, E11.319, E11.3211, E11.3212, E11.3213, E11.3219, E11.3291, E11.3292, E11.3293, E11.3299, E11.3311, E11.3312, E11.3313, E11.3319, E11.3391, E11.3392, E11.3393, E11.3399, E11.3411, E11.3412, E11.3413, E11.3419, E11.3491, E11.3492, E11.3493,

E11.3499, E11.3511, E11.3512, E11.3513, E11.3519, E11.3521, E11.3522, E11.3523, E11.3529, E11.3531, E11.3532, E11.3533, E11.3539, E11.3541, E11.3542, E11.3543, E11.3549, E11.3551, E11.3552, E11.3553, E11.3559, E11.3591, E11.3592, E11.3593, E11.3599, E11.36, E11.37X1, E11.37X2, E11.37X3, E11.37X9, E11.39, E11.40, E11.41, E11.42, E11.43, E11.44, E11.49, E11.51, E11.52, E11.59, E11.610, E11.618, E11.620, E11.621, E11.622, E11.628, E11.630, E11.638, E11.641, E11.649, E11.65, E11.69, E11.8, E11.9, E13.00, E13.01, E13.10, E13.11, E13.21, E13.22, E13.29, E13.311, E13.319, E13.3211, E13.3212, E13.3213, E13.3219, E13.3291, E13.3292, E13.3293, E13.3299, E13.3311, E13.3312, E13.3313, E13.3319, E13.3391, E13.3392, E13.3393, E13.3399, E13.3411, E13.3412, E13.3413, E13.3419, E13.3491, E13.3492, E13.3493, E13.3499, E13.3511, E13.3512, E13.3513, E13.3519, E13.3521, E13.3522, E13.3523, E13.3529, E13.3531, E13.3532, E13.3533, E13.3539, E13.3541, E13.3542, E13.3543, E13.3549, E13.3551, E13.3552, E13.3553, E13.3559, E13.3591, E13.3592, E13.3593, E13.3599, E13.36, E13.37X1, E13.37X2, E13.37X3, E13.37X9, E13.39, E13.40, E13.41, E13.42, E13.43, E13.44, E13.49, E13.51, E13.52, E13.59, E13.610, E13.618, E13.620, E13.621, E13.622, E13.628, E13.630, E13.638, E13.641, E13.649, E13.65, E13.69, E13.8, E13.9, O24.011, O24.012, O24.013, O24.019, O24.02, O24.03, O24.111, O24.112, O24.113, O24.119, O24.12, O24.13, O24.311, O24.312, O24.313, O24.319, O24.32, O24.33, O24.811, O24.812, O24.813, O24.819, O24.82, O24.83

AND

Patient encounter during the performance period (CPT or HCPCS): 92002, 92004, 92012, 92014, 99202, 99203, 99204, 99205, 99212, 99213, 99214, 99215, 99341, 99342, 99343, 99344, 99345, 99347, 99348, 99349, 99350, 99385*, 99386*, 99387*, 99395*, 99396*, 99397*, G0438, G0439

NUMERATOR:

Patients with an eye screening for diabetic retinal disease. This includes diabetics who had one of the following:

- Diabetic with a diagnosis of retinopathy that overlaps the measurement period and a retinal or dilated eye exam by an eye care professional in the measurement period
- Diabetic with no diagnosis of retinopathy overlapping the measurement period and a retinal or dilated eye exam by an eye care professional in the measurement period or the year prior to the measurement period

NUMERATOR NOTE: *The eye exam must be performed or reviewed by an ophthalmologist or optometrist. Alternatively, results may be read by a qualified reading center that operates under the direction of a medical director who is a retinal specialist.*

Numerator Quality-Data Coding Options:

Patient receiving Hospice Services, Patient Not Eligible

Denominator Exclusion: G9714:

Patient is using hospice services any time during the measurement period

OR

G2105:

Patient age 66 or older in Institutional Special Needs Plans (SNP) or residing in long-term care with POS code 32, 33, 34, 54, or 56 for more than 90 consecutive days during the measurement period

OR

G2106:

Patients 66 years of age and older with at least one claim/encounter for frailty during the measurement period AND a dispensed medication for dementia during the measurement period or the year prior to the measurement period

OR

G2107:

Patient 66 years of age and older and has at least one claim/encounter for frailty during the measurement period AND either one acute inpatient encounter with a diagnosis of advanced illness or two outpatient, observation, ED or nonacute inpatient encounters on different dates of service with an advanced illness diagnosis during the

measurement period or the year prior to the measurement period

Table: Dementia Exclusion Medications

Description	Prescription
Cholinesterase inhibitors	Donepezil Galantamine Rivastigimine
Miscellaneous central nervous system agents	Memantine

- **Codes to identify Frailty:** 99504, 99509, E0100, E0105, E0130, E0135, E0140, E0141, E0143, E0144, E0147, E0148, E0149, E0163, E0165, E0167, E0168, E0170, E0171, E0250, E0251, E0255, E0256, E0260, E0261, E0265, E0266, E0270, E0290, E0291, E0292, E0293, E0294, E0295, E0296, E0297, E0301, E0302, E0303, E0304, E0424, E0425, E0430, E0431, E0433, E0434, E0435, E0439, E0440, E0441, E0442, E0443, E0444, E0462, E0465, E0466, E0470, E0471, E0472, E0561, E0562, E1130, E1140, E1150, E1160, E1161, E1240, E1250, E1260, E1270, E1280, E1285, E1290, E1295, E1296, E1297, E1298, G0162, G0299, G0300, G0493, G0494, S0271, S0311, S9123, S9124, T1000, T1001, T1002, T1003, T1004, T1005, T1019, T1020, T1021, T1022, T1030, T1031, L89.119, L89.139, L89.149, L89.159, L89.209, L89.309, L89.899, L89.90, M62.50, M62.81, M62.84, R26.0, R26.1, R26.2, R26.89, R26.9, R41.81, R53.1, R53.81, R53.83, R54, R62.7, R63.4, R63.6, R64, W01.0XXA, W01.0XXD, W01.0XXS, W01.10XA, W01.10XD, W01.10XS, W01.110A, W01.110D, W01.110S, W01.111A, W01.111D, W01.111S, W01.118A, W01.118D, W01.118S, W01.119A, W01.119D, W01.119S, W01.190A, W01.190D, W01.190S, W01.198A, W01.198D, W01.198S, W06.XXXA, W06.XXXD, W06.XXXS, W07.XXXA, W07.XXXD, W07.XXXS, W08.XXXA, W08.XXXD, W08.XXXS, W10.0XXA, W10.0XXD, W10.0XXS, W10.1XXA, W10.1XXD, W10.1XXS, W10.2XXA, W10.2XXD, W10.2XXS, W10.8XXA, W10.8XXD, W10.8XXS, W10.9XXA, W10.9XXD, W10.9XXS, W18.00XA, W18.00XD, W18.00XS, W18.02XA, W18.02XD, W18.02XS, W18.09XA, W18.09XD, W18.09XS, W18.11XA, W18.11XD, W18.11XS, W18.12XA, W18.12XD, W18.12XS, W18.2XXA, W18.2XXD, W18.2XXS, W18.30XA, W18.30XD, W18.30XS, W18.31XA, W18.31XD, W18.31XS, W18.39XA, W18.39XD, W18.39XS, W19.XXXA, W19.XXXD, W19.XXXS, Y92.199, Z59.3, Z73.6, Z74.01, Z74.09, Z74.1, Z74.2, Z74.3, Z74.8, Z74.9, Z91.81, Z99.11, Z99.3, Z99.81, Z99.89
- **Codes to identify Advanced Illness:** A81.00, A81.01, A81.09, C25.0, C25.1, C25.2, C25.3, C25.4, C25.7, C25.8, C25.9, C71.0, C71.1, C71.2, C71.3, C71.4, C71.5, C71.6, C71.7, C71.8, C71.9, C77.0, C77.1, C77.2, C77.3, C77.4, C77.5, C77.8, C77.9, C78.00, C78.01, C78.02, C78.1, C78.2, C78.30, C78.39, C78.4, C78.5, C78.6, C78.7, C78.80, C78.89, C79.00, C79.01, C79.02, C79.10, C79.11, C79.19, C79.2, C79.31, C79.32, C79.40, C79.49, C79.51, C79.52, C79.60, C79.61, C79.62, C79.70, C79.71, C79.72, C79.81, C79.82, C79.89, C79.9, C91.00, C91.02, C92.00, C92.02, C93.00, C93.02, C93.90, C93.92, C93.Z0, C93.Z2, C94.30, C94.32, F01.50, F01.51, F02.80, F02.81, F03.90, F03.91, F04, F10.27, F10.96, F10.97, G10, G12.21, G20, G30.0, G30.1, G30.8, G30.9, G31.01, G31.09, G31.83, I09.81, I11.0, I12.0, I13.0, I13.11, I13.2, I50.1, I50.20, I50.21, I50.22, I50.23, I50.30, I50.31, I50.32, I50.33, I50.40, I50.41, I50.42, I50.43, I50.810, I50.811, I50.812, I50.813, I50.814, I50.82, I50.83, I50.84, I50.89, I50.9, J43.0, J43.1, J43.2, J43.8, J43.9, J68.4, J84.10, J84.112, J84.17, J84.170, J84.178, J96.10, J96.11, J96.12, J96.20, J96.21, J96.22, J96.90, J96.91, J96.92, J98.2, J98.3, K70.10, K70.11, K70.2, K70.30, K70.31, K70.40, K70.41, K70.9, K74.0, K74.00, K74.01, K74.02, K74.1, K74.2, K74.4, K74.5, K74.60, K74.69, L89.000, L89.001, L89.002, L89.003, L89.004, L89.006, L89.009, L89.010, L89.011, L89.012, L89.013, L89.014, L89.016, L89.019, L89.020, L89.021, L89.022, L89.023, L89.024, L89.026, L89.029, L89.100, L89.101, L89.102, L89.103, L89.104, L89.106, L89.109, L89.110, L89.111, L89.112, L89.113, L89.114, L89.116, L89.119, L89.120, L89.121, L89.122, L89.123, L89.124, L89.126, L89.129, L89.130, L89.131, L89.132, L89.133, L89.134, L89.136, L89.139, L89.140, L89.141, L89.142, L89.143, L89.144, L89.146, L89.149, L89.150, L89.151, L89.152, L89.153, L89.154, L89.156, L89.159, L89.200, L89.201, L89.202, L89.203, L89.204, L89.206, L89.209, L89.210, L89.211, L89.212, L89.213, L89.214, L89.216, L89.219, L89.220, L89.221, L89.222, L89.223, L89.224, L89.226, L89.229, L89.300, L89.301, L89.302, L89.303, L89.304, L89.306, L89.309, L89.310, L89.311, L89.312, L89.313, L89.314, L89.316, L89.319, L89.320, L89.321, L89.322, L89.323, L89.324, L89.326, L89.329, L89.40, L89.41, L89.42, L89.43, L89.44, L89.45, L89.46, L89.500, L89.501, L89.502, L89.503,

L89.504, L89.506, L89.509, L89.510, L89.511, L89.512, L89.513, L89.514, L89.516, L89.519, L89.520, L89.521, L89.522, L89.523, L89.524, L89.526, L89.529, L89.600, L89.601, L89.602, L89.603, L89.604, L89.606, L89.609, L89.610, L89.611, L89.612, L89.613, L89.614, L89.616, L89.619, L89.620, L89.621, L89.622, L89.623, L89.624, L89.626, L89.629, L89.810, L89.811, L89.812, L89.813, L89.814, L89.816, L89.819, L89.890, L89.891, L89.892, L89.893, L89.894, L89.896, L89.899, L89.90, L89.91, L89.92, L89.93, L89.94, L89.95, L89.96, N18.5, N18.6

OR

Retinal or Dilated Eye Exam Performed by an Eye Care Professional

Performance Met: 2022F:

Dilated retinal eye exam with interpretation by an ophthalmologist or optometrist documented and reviewed

OR

Performance Met: 2023F:

Dilated retinal eye exam with interpretation by an ophthalmologist or optometrist documented and reviewed; without evidence of retinopathy

OR

Performance Met: 2024F:

7 standard field stereoscopic photos with interpretation by an ophthalmologist or optometrist documented and reviewed

OR

Performance Met: 2025F:

7 standard field stereoscopic photos with interpretation by an ophthalmologist or optometrist documented and reviewed; without evidence of retinopathy

OR

Performance Met: 2026F:

Eye imaging validated to match diagnosis from 7 standard field stereoscopic photos results documented and reviewed

OR

Performance Met: 2033F:

Eye imaging validated to match diagnosis from 7 standard field stereoscopic photos results documented and reviewed; without evidence of retinopathy

OR

Performance Met: CPT II 3072F:

Low risk for retinopathy (no evidence of retinopathy in the prior year)*

**Note: This code can only be used if the claim/encounter was during the measurement period because it indicates that the patient had “no evidence of retinopathy in the prior year”. This code definition indicates results were negative; therefore, a result is not required.*

OR

**Performance Not Met: 2022F
2024F or 2026F with 8P:**

Dilated eye exam was not performed, reason not otherwise specified

RATIONALE:

As the seventh leading cause of death in the U.S., diabetes kills approximately 79,500 people a year and affects more than 30 million Americans (9.4 percent of the U.S. population) (Centers for Disease Control and Prevention [CDC], 2017a, 2017b). Diabetes is a long-lasting disease marked by high blood glucose levels, resulting from the body's inability to produce or use insulin properly (CDC, 2019). People with diabetes are at increased risk of serious health complications including vision loss, heart disease, stroke, kidney failure, amputation of toes, feet or legs, and premature death (CDC, 2016).

In 2017, diabetes cost the U.S. an estimated \$327 billion: \$237 billion in direct medical costs and \$90 billion in reduced productivity. This is a 34 percent increase from the estimated \$245 billion spent on diabetes in 2012 (American Diabetes

Association, 2018).

Diabetic retinopathy is progressive damage to the small blood vessels in the retina that may result in loss of vision. It is the leading cause of blindness in adults between 20-74 years of age. Approximately 4.1 million adults are affected by diabetic retinopathy (CDC, 2015).

CLINICAL RECOMMENDATION STATEMENTS:

American Diabetes Association (2019):

- Adults with type 1 diabetes should have an initial dilated and comprehensive eye examination by an ophthalmologist or optometrist within 5 years after the onset of diabetes. (Level of evidence: B)
- Patients with type 2 diabetes should have an initial dilated and comprehensive eye examination by an ophthalmologist or optometrist at the time of the diabetes diagnosis. (Level of evidence: B)
- If there is no evidence of retinopathy for one or more annual eye exam and glycemia is well controlled, then exams every 1–2 years may be considered. If any level of diabetic retinopathy is present, subsequent dilated retinal examinations should be repeated at least annually by an ophthalmologist or optometrist. If retinopathy is progressing or sight threatening, then examinations will be required more frequently. (Level of evidence: B)

COPYRIGHT:

Physician Performance Measure (Measures) and related data specifications were developed by the National Committee for Quality Assurance (NCQA). These performance Measures are not clinical guidelines and do not establish a standard of medical care, and have not been tested for all potential applications. NCQA makes no representations, warranties or endorsements about the quality of any organization or clinician who uses or reports performance measures. NCQA has no liability to anyone who relies on measures and specifications or data reflective of performance under such measures and specifications.

The Measures are copyrighted but can be reproduced and distributed, without modification, for noncommercial purposes (eg, use by healthcare providers in connection with their practices). Commercial use is defined as the sale, licensing, or distribution of the Measures for commercial gain, or incorporation of the Measures into a product or service that is sold, licensed or distributed for commercial gain. All commercial uses or requests for alteration of the measures and specifications must be approved by NCQA and are subject to a license at the discretion of NCQA. NCQA is not responsible for any use of the Measures. © 2020 NCQA. All Rights Reserved.

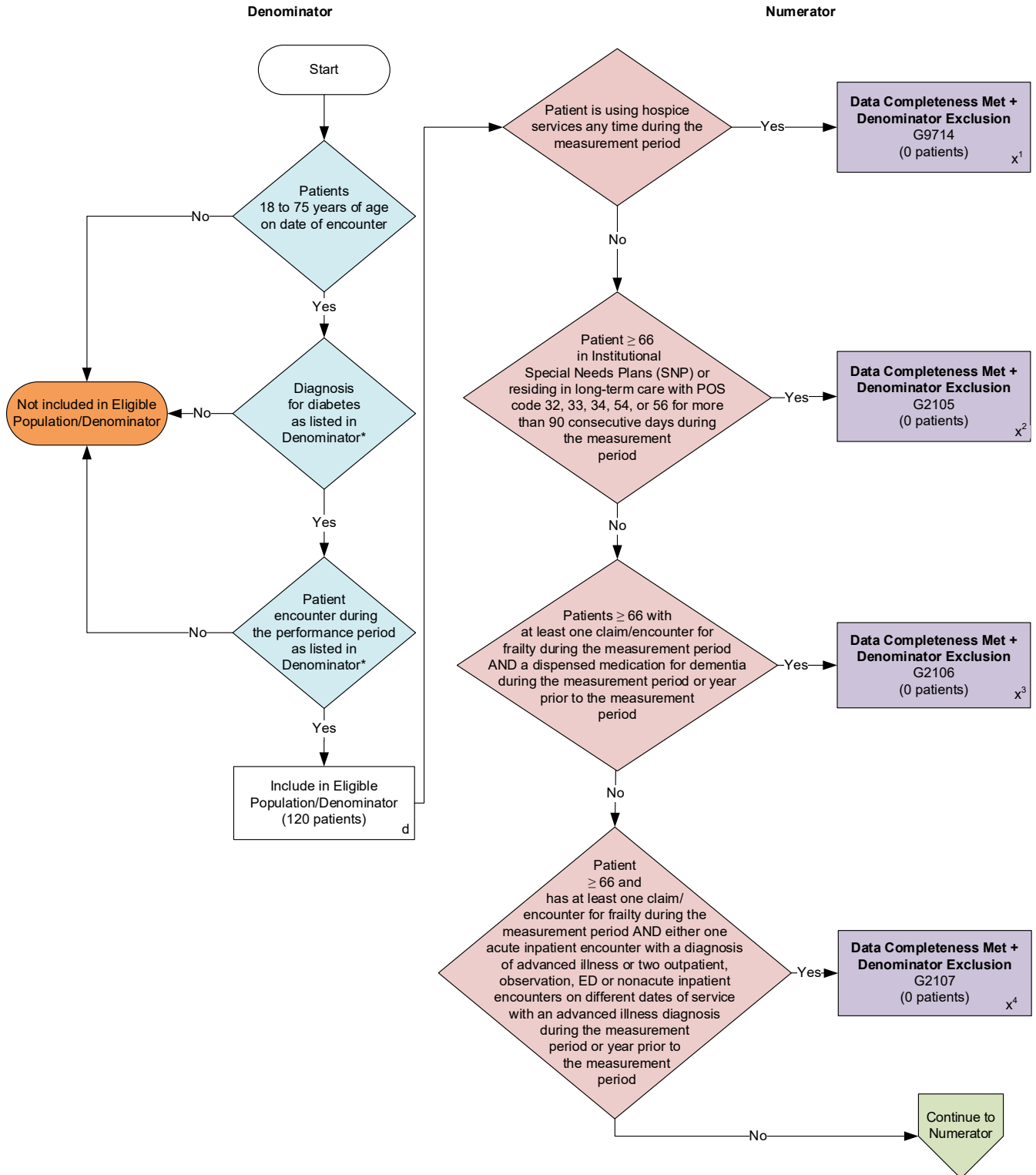
THE MEASURES AND SPECIFICATIONS ARE PROVIDED "AS IS" WITHOUT WARRANTY OF ANY KIND.

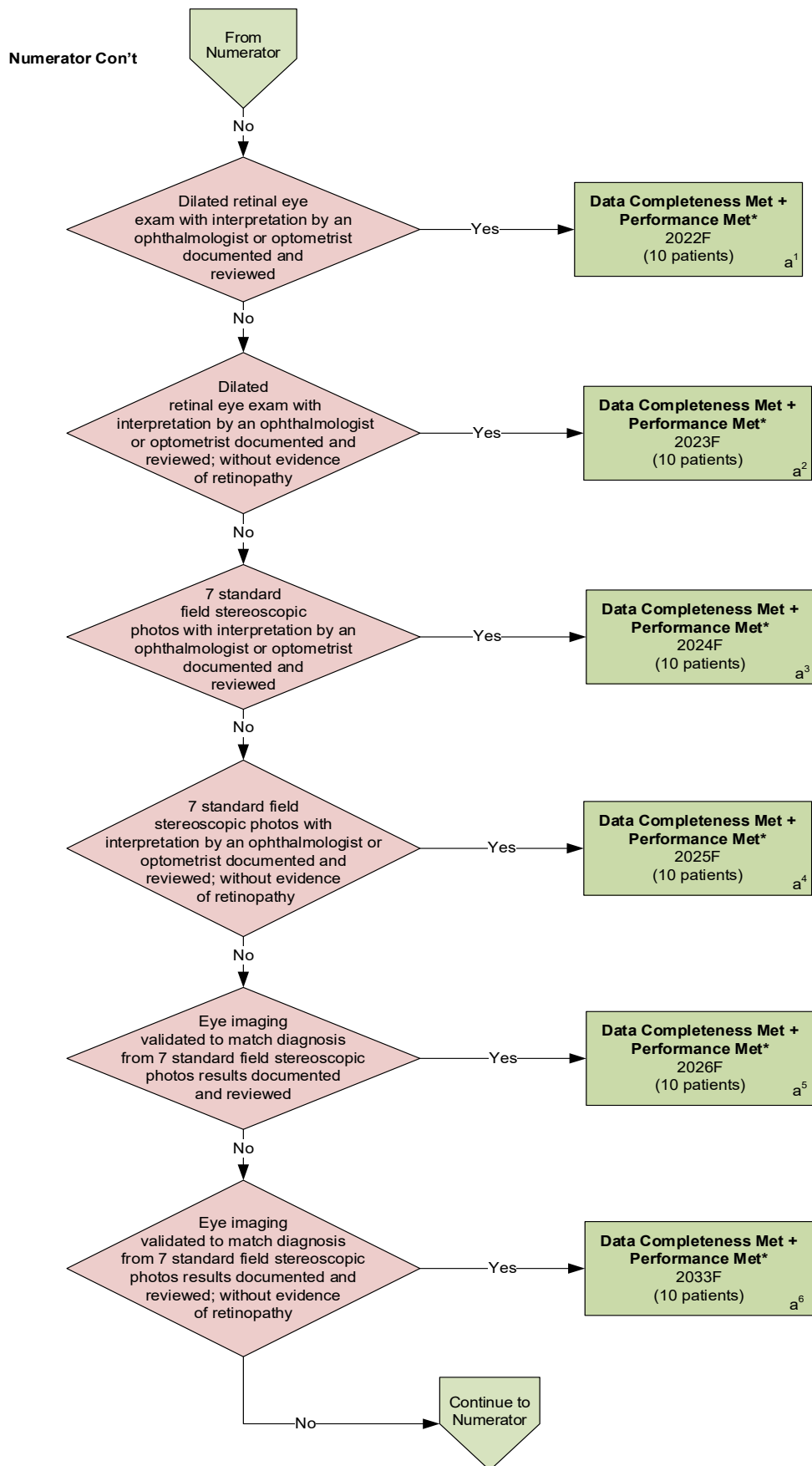
Limited proprietary coding is contained in the Measure specifications for user convenience. Users of proprietary code sets should obtain all necessary licenses from the owners of the code sets. NCQA disclaims all liability for use or accuracy of any CPT or other codes contained in the specifications.

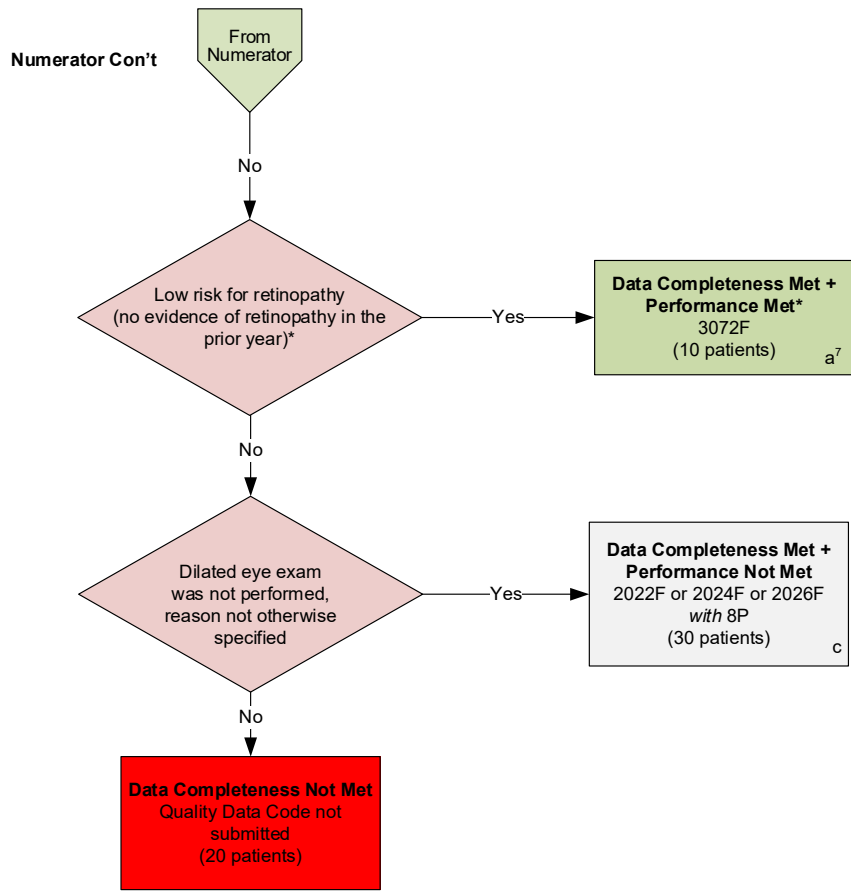
CPT® contained in the Measure specifications is copyright 2004-2020 American Medical Association. LOINC® copyright 2004-2020 Regenstrief Institute, Inc. This material contains SNOMED Clinical Terms® (SNOMED CT®) copyright 2004-2020 International Health Terminology Standards Development Organisation. ICD-10 copyright 2020 World Health Organization. All Rights Reserved.

**2021 Medicare Part B Claims Flow for Quality ID #117 (NQF 0055):
Diabetes: Eye Exam**

Disclaimer: Refer to the measure specification for specific coding and instructions to submit this measure.







SAMPLE CALCULATIONS

Data Completeness=

Denominator Exclusion ($x^1+x^2+x^3+x^4=0$ patients) + Performance Met ($a^1+a^2+a^3+a^4+a^5+a^6+a^7=70$ patients) + Performance Not Met ($c=30$ patients) = 100 patients = 83.33%
 Eligible Population / Denominator ($d=120$ patients) = 120 patients

Performance Rate=

Performance Met ($a^1+a^2+a^3+a^4+a^5+a^6+a^7=70$ patients) = 70 patients = 70.00%
 Data Completeness Numerator (100 patients) - Denominator Exclusion ($x^1+x^2+x^3+x^4=0$ patients) = 100 patients

*See the posted measure specification for specific coding and instructions to submit this measure.

NOTE: Submission Frequency: Patient-Process

CPT only copyright 2020 American Medical Association. All rights reserved.
 The measure diagrams were developed by CMS as a supplemental resource to be used in conjunction with the measure specifications. They should not be used alone or as a substitution for the measure specification.

v5

**2021 Medicare Part B Claims Flow Narrative for Quality ID #117 (NQF 0055):
Diabetes: Eye Exam**

Disclaimer: Refer to the measure specification for specific coding and instructions to submit this measure.

1. Start with Denominator
2. Check *Patients 18 to 75 years of age on date of encounter* :
 - a. If *Patients 18 to 75 years of age on date of encounter* equals No, do not include in *Eligible Population/Denominator*. Stop processing.
 - b. If *Patients 18 to 75 years of age on date of encounter* equals Yes, proceed to *Diagnosis for diabetes as listed in Denominator**.
3. Check *Diagnosis for diabetes as listed in Denominator**:
 - a. If *Diagnosis for diabetes as listed in Denominator** equals No, do not include in *Eligible Population/Denominator*. Stop processing.
 - b. If *Diagnosis for diabetes as listed in Denominator** equals Yes, proceed to *Patient encounter during the performance period as listed in Denominator**.
4. Check *Patient encounter during the performance period as listed in Denominator**:
 - a. If *Patient encounter during the performance period as listed in Denominator** equals No, do not include in *Eligible Population/Denominator*. Stop processing.
 - b. If *Patient encounter during the performance period as listed in Denominator** equals Yes, include in *Eligible Population/Denominator*.
5. Denominator Population:
 - Denominator Population is all Eligible Patients in the Denominator. Denominator is represented as Denominator in the Sample Calculation listed at the end of this document. Letter d equals 120 patients in the Sample Calculation.
6. Start Numerator
7. Check *Patient is using hospice services any time during the measurement period*:
 - a. If *Patient is using hospice services any time during the measurement period* equals Yes, include in *Data Completeness Met and Denominator Exclusion*.
 - *Data Completeness Met and Denominator Exclusion* letter is represented as Data Completeness and Performance Rate in the Sample Calculation listed at the end of this document. Letter x¹ equals 0 patients in the Sample Calculation.
 - b. If *Patient is using hospice services any time during the measurement period* equals No, proceed to *Patient greater than or equal to 66 years of age in Institutional Special Needs Plans (SNP) or residing in long-term care with POS code 32, 33, 34, 54, or 56 for more than 90 consecutive days during the measurement period*.
8. Check *Patient greater than or equal to 66 years of age in Institutional Special Needs Plans (SNP) or residing in long-term care with POS code 32, 33, 34, 54, or 56 for more than 90 consecutive days during the measurement period*:

- a. *If Patient greater than or equal to 66 years of age in Institutional Special Needs Plans (SNP) or residing in long-term care with POS code 32, 33, 34, 54, or 56 for more than 90 consecutive days during the measurement period equals Yes, include in Data Completeness Met and Denominator Exclusion.*
 - *Data Completeness Met and Denominator Exclusion letter is represented as Data Completeness and Performance Rate in the Sample Calculation listed at the end of this document. Letter x^2 equals 0 patients in the Sample Calculation.*
 - b. *If Patient greater than or equal to 66 years of age in Institutional Special Needs Plans (SNP) or residing in long-term care with POS code 32, 33, 34, 54, or 56 for more than 90 consecutive days during the measurement period equals No, proceed to Patients greater than or equal to 66 years of age with at least one claim/encounter for frailty during the measurement period AND a dispensed medication for dementia during the measurement period or year prior to the measurement period.*
9. *Check Patients greater than or equal to 66 years of age with at least one claim/encounter for frailty during the measurement period AND a dispensed medication for dementia during the measurement period or year prior to the measurement period:*
- a. *If Patients greater than or equal to 66 years of age with at least one claim/encounter for frailty during the measurement period AND a dispensed medication for dementia during the measurement period or year prior to the measurement period equals Yes, include in Data Completeness Met and Denominator Exclusion.*
 - *Data Completeness Met and Denominator Exclusion letter is represented as Data Completeness and Performance Rate in the Sample Calculation listed at the end of this document. Letter x^3 equals 0 patients in the Sample Calculation.*
 - b. *If Patients greater than or equal to 66 years of age with at least one claim/encounter for frailty during the measurement period AND a dispensed medication for dementia during the measurement period or year prior to the measurement period equals No, proceed to Patient greater than or equal to 66 years of age and has at least one claim/encounter for frailty during the measurement period AND either one acute inpatient encounter with a diagnosis of advanced illness or two outpatient, observation, ED or nonacute inpatient encounters on different dates of service with an advanced illness diagnosis during the measurement period or the year prior to the measurement period.*
10. *Check Patient greater than or equal to 66 years of age and has at least one claim/encounter for frailty during the measurement period AND either one acute inpatient encounter with a diagnosis of advanced illness or two outpatient, observation, ED or nonacute inpatient encounters on different dates of service with an advanced illness diagnosis during the measurement period or the year prior to the measurement period:*
- a. *If Patient greater than or equal to 66 years of age and has at least one claim/encounter for frailty during the measurement period AND either one acute inpatient encounter with a diagnosis of advanced illness or two outpatient, observation, ED or nonacute inpatient encounters on different dates of service with an advanced illness diagnosis during the measurement period or the year prior to the measurement period equals Yes, include in Data Completeness Met and Denominator Exclusion.*
 - *Data Completeness Met and Denominator Exclusion letter is represented as Data Completeness and Performance Rate in the Sample Calculation listed at the end of this document. Letter x^4 equals 0 patients in the Sample Calculation.*
 - b. *If Patient greater than or equal to 66 years of age and has at least one claim/encounter for frailty during the measurement period AND either one acute inpatient encounter with a diagnosis of advanced illness*

or two outpatient, observation, ED or nonacute inpatient encounters on different dates of service with an advanced illness diagnosis during the measurement period or the year prior to the measurement period equals No, proceed to *Dilated retinal eye exam with interpretation by an ophthalmologist or optometrist documented and reviewed*:

11. Check *Dilated retinal eye exam with interpretation by an ophthalmologist or optometrist documented and reviewed*:
 - a. If *Dilated retinal eye exam with interpretation by an ophthalmologist or optometrist documented and reviewed* equals Yes, include in *Data Completeness Met and Performance Met**.
 - *Data Completeness Met and Performance Met** letter is represented as Data Completeness and Performance Rate in the Sample Calculation listed at the end of this document. Letter a¹ equals 10 patients in the Sample Calculation.
 - b. If *Dilated retinal eye exam with interpretation by an ophthalmologist or optometrist documented and reviewed* equals No, proceed to *Dilated retinal eye exam with interpretation by an ophthalmologist or optometrist documented and reviewed; without evidence of retinopathy*.
12. Check *Dilated retinal eye exam with interpretation by an ophthalmologist or optometrist documented and reviewed; without evidence of retinopathy*:
 - a. If *Dilated retinal eye exam with interpretation by an ophthalmologist or optometrist documented and reviewed; without evidence of retinopathy* equals Yes, include in *Data Completeness Met and Performance Met**.
 - *Data Completeness Met and Performance Met** letter is represented as Data Completeness and Performance Rate in the Sample Calculation listed at the end of this document. Letter a² equals 10 patients in the Sample Calculation.
 - b. If *Dilated retinal eye exam with interpretation by an ophthalmologist or optometrist documented and reviewed; without evidence of retinopathy* equals No, proceed to *7 standard field stereoscopic photos with interpretation by an ophthalmologist or optometrist documented and reviewed; without evidence of retinopathy*.
13. Check *7 standard field stereoscopic photos with interpretation by an ophthalmologist or optometrist documented and reviewed*:
 - a. If *7 standard field stereoscopic photos with interpretation by an ophthalmologist or optometrist documented and reviewed* equals Yes, include in the *Data Completeness Met and Performance Met**.
 - *Data Completeness Met and Performance Met** letter is represented as Data Completeness and Performance Rate in the Sample Calculation listed at the end of this document. Letter a³ equals 10 patients in the Sample Calculation.
 - b. If *7 standard field stereoscopic photos with interpretation by an ophthalmologist or optometrist documented and reviewed* equals No, proceed to *7 standard field stereoscopic photos with interpretation by an ophthalmologist or optometrist documented and reviewed; without evidence of retinopathy*.
14. Check *7 standard field stereoscopic photos with interpretation by an ophthalmologist or optometrist documented and reviewed; without evidence of retinopathy*:
 - a. If *7 standard field stereoscopic photos with interpretation by an ophthalmologist or optometrist*

documented and reviewed; without evidence of retinopathy equals Yes, include in the Data Completeness Met and Performance Met.*

- *Data Completeness Met and Performance Met* letter is represented as Data Completeness and Performance Rate in the Sample Calculation listed at the end of this document. Letter a⁴ equals 10 patients in the Sample Calculation.*
- b. *If 7 standard field stereoscopic photos with interpretation by an ophthalmologist or optometrist documented and reviewed; without evidence of retinopathy equals No, proceed to Eye imaging validated to match diagnosis from 7 standard field stereoscopic photos results documented and reviewed.*
15. Check *Eye imaging validated to match diagnosis from 7 standard field stereoscopic photos results documented and reviewed:*
- a. *If Eye imaging validated to match diagnosis from 7 standard field stereoscopic photos results documented and reviewed equals Yes, include in Data Completeness Met and Performance Met*.*
- *Data Completeness Met and Performance Met* letter is represented as Data Completeness and Performance Rate in the Sample Calculation listed at the end of this document. Letter a⁵ equals 10 patients in the Sample Calculation.*
- b. *Eye imaging validated to match diagnosis from 7 standard field stereoscopic photos results documented and reviewed equals No proceed to Eye imaging validated to match diagnosis from 7 standard field stereoscopic photos results documented and reviewed; without evidence of retinopathy.*
16. Check *Eye imaging validated to match diagnosis from 7 standard field stereoscopic photos results documented and reviewed; without evidence of retinopathy:*
- a. *If Eye imaging validated to match diagnosis from 7 standard field stereoscopic photos results documented and reviewed; without evidence of retinopathy equals Yes, include in Data Completeness Met and Performance Met*.*
- *Data Completeness Met and Performance Met* letter is represented as Data Completeness and Performance Rate in the Sample Calculation listed at the end of this document. Letter a⁶ equals 10 patients in the Sample Calculation.*
- b. *If Eye imaging validated to match diagnosis from 7 standard field stereoscopic photos results documented and reviewed; without evidence of retinopathy equals No, proceed to Low risk for retinopathy (no evidence of retinopathy in the prior year)*.*
17. Check *Low risk for retinopathy (no evidence of retinopathy in the prior year)*:*
- a. *If Low risk for retinopathy (no evidence of retinopathy in the prior year)* equals Yes, include in Data Completeness Met and Performance Met*.*
- *Data Completeness Met and Performance Met* letter is represented as Data Completeness and Performance Rate in the Sample Calculation listed at the end of this document. Letter a⁷ equals 10 patients in the Sample Calculation.*
- b. *If Low risk for retinopathy (no evidence of retinopathy in the prior year)* equals No, proceed to Dilated eye exam was not performed, reason not otherwise specified.*
18. Check *Dilated eye exam was not performed, reason not otherwise specified:*

- a. If *Dilated eye exam was not performed, reason not otherwise specified* equals Yes, include in the *Data Completeness Met and Performance Not Met*.
 - *Data Completeness Met and Performance Not Met* letter is represented as Data Completeness the Sample Calculation listed at the end of this document. Letter c equals 30 patients in the Sample Calculation.
 - b. If *Dilated eye exam was not performed, reason not otherwise specified* equals No, proceed to *Data Completeness Not Met*.
19. Check *Data Completeness Not Met*:
- a. If *Data Completeness Not Met*, the Quality Data Code was not submitted. 20 patients have been subtracted from the Data Completeness Numerator in the Sample Calculation.

Sample Calculations:

Data Completeness equals Denominator Exclusion (x^1 plus x^2 plus x^3 plus x^4 equals 0 patients) plus Performance Met (a^1 plus a^2 plus a^3 plus a^4 plus a^5 plus a^6 plus a^7 equals 70 patients) plus Performance Not Met (c equals 30 patients) divided by Eligible Population/Denominator (d equals 120 patients). All equals 100 patients divided by 120 patients. All equals 83.33 percent.

Performance rate equals Performance Met (a^1 plus a^2 plus a^3 plus a^4 plus a^5 plus a^6 plus a^7 equals 70 patients) divided by Data Completeness Numerator (100 patients) minus Denominator Exclusion (x^1 plus x^2 plus x^3 plus x^4 equals 0 patients). All equals 70 patients divided by 100 patients. All equals 70 percent.

*See the posted measure specification for specific coding and instructions to submit this measure.

NOTE: Submission Frequency: Patient-Process

The measure diagrams were developed by CMS as a supplemental resource to be used in conjunction with the measure specifications. They should not be used alone or as a substitution for the measure specification.