

Quality ID #111: Pneumococcal Vaccination Status for Older Adults
– National Quality Strategy Domain: Community/Population Health
– Meaningful Measure Area: Preventive Care

2021 COLLECTION TYPE:
MEDICARE PART B CLAIMS

MEASURE TYPE:
Process

DESCRIPTION:
Percentage of patients 65 years of age and older who have ever received a pneumococcal vaccine

INSTRUCTIONS:
This measure is to be submitted a minimum of **once per performance period** for patients seen during the performance period. There is no diagnosis associated with this measure. Performance for this measure is not limited to the performance period. This measure may be submitted by Merit-based Incentive Payment System (MIPS) eligible clinicians who perform the quality actions described in the measure based on services provided and the measure-specific denominator coding.

NOTE: Patient encounters for this measure conducted via telehealth (e.g., encounters coded with GQ, GT, 95, or POS 02 modifiers) are allowable.

Measure Submission Type:
Measure data may be submitted by individual MIPS eligible clinicians using Medicare Part B claims. The listed denominator criteria are used to identify the intended patient population. The numerator quality-data codes included in this specification are used to submit the quality actions allowed by the measure on the claim form(s). All measure-specific coding should be submitted on the claim(s) representing the denominator eligible encounter and selected numerator option.

DENOMINATOR:
Patients 65 years of age and older with a visit during the measurement period

DENOMINATOR NOTE: This measure assesses whether patients 65 years of age or older have received one or more pneumococcal vaccinations.

DENOMINATOR NOTE: *Signifies that this CPT Category I code is a non-covered service under the Physician Fee Schedule (PFS). These non-covered services will not be counted in the denominator population for Medicare Part B claims measures

Denominator Criteria (Eligible Cases):
Patients aged ≥ 65 years on date of encounter

AND
Patient encounter during the performance period (CPT or HCPCS): 99202, 99203, 99204, 99205, 99212, 99213, 99214, 99215, 99304, 99305, 99306, 99307, 99308, 99309, 99310, 99315, 99316, 99324, 99325, 99326, 99327, 99328, 99334, 99335, 99336, 99337, 99341, 99342, 99343, 99344, 99345, 99347, 99348, 99349, 99350, 99385*, 99386*, 99387*, 99395*, 99396*, 99397*, G0438, G0439

NUMERATOR:
Patients who have **ever** received a pneumococcal vaccination before the end of the measurement period

NUMERATOR NOTE: While the measure provides credit for adults 65 years of age and older who have ever received either the PCV13 or PPSV23 vaccine (or both), according to ACIP recommendations, patients should

receive both vaccines. The order and timing of the vaccinations depends on certain patient characteristics, and are described in more detail in the ACIP recommendations.

Numerator Quality-Data Coding Options:

Patient receiving Hospice Services, Patient Not Eligible:

Denominator Exclusion: G9707: Patient received hospice services any time during the measurement period

OR

Pneumococcal Vaccination Administered or Previously Received

Performance Met: CPT II 4040F: Pneumococcal vaccine administered or previously received

OR

Pneumococcal Vaccination not Administered or Previously Received, Reason not Otherwise Specified

Append a submission modifier (8P) to CPT Category II code 4040F to submit circumstances when the action described in the numerator is not performed and the reason is not otherwise specified.

Performance Not Met: 4040F with 8P: Pneumococcal vaccine was not administered or previously received, reason not otherwise specified

RATIONALE:

Pneumonia is a common cause of illness and death in the elderly and persons with certain underlying conditions. The major clinical syndromes of pneumococcal disease include pneumonia, bacteremia and meningitis, with pneumonia being the most common (Centers for Disease Control and Prevention [CDC], 2015a). Pneumonia symptoms generally include fever, chills, pleuritic chest pain, cough with sputum, dyspnea, tachypnea, hypoxia tachycardia, malaise and weakness. There is an estimated 400,000 cases of pneumonia in the U.S. each year and a 5 percent-7 percent mortality rate, although it may be higher among older adults and adults in nursing homes (CDC, 2015b; Janssens & Krause, 2004).

Among the 91.5 million US adults aged > 50 years, 29,500 cases of IPD, 502,600 cases of nonbacteremic pneumococcal pneumonia and 25,400 pneumococcal-related deaths are estimated to occur yearly; annual direct and indirect costs are estimated to total \$3.7 billion and \$1.8 billion, respectively. Pneumococcal disease remains a substantial burden among older US adults, despite increased coverage with 23-valent pneumococcal polysaccharide vaccine, (PPV23) and indirect benefits afforded by PCV7 vaccination of young children (Weycker et al., 2011).

Pneumococcal vaccines have been shown to be highly effective in preventing invasive pneumococcal disease. When comparing costs, outcomes and quality adjusted life years, immunization with the two recommended pneumococcal vaccines was found to be more economically efficient than no vaccination, with an incremental cost-effectiveness ratio of \$25,841 per quality-adjusted life year gained (Chen et al., 2014).

CLINICAL RECOMMENDATION STATEMENTS:

In 2014, the Advisory Committee on Immunization Practices (ACIP) began recommending a dose of 13-valent pneumococcal conjugate vaccine (PCV13) be followed by a dose of 23-valent pneumococcal polysaccharide vaccine (PPSV23) 6-12 months later in adults aged 65 and older who have not previously received a pneumococcal vaccination, and in persons over the age of two years who are considered to be at higher risk for pneumococcal disease due to an underlying condition. The two vaccines should not be coadministered and intervals for administration of the two vaccines vary slightly depending on the age, risk group, and history of vaccination (Kobayashi, 2015).

In 2015, ACIP updated its recommendation and changed the interval between PCV13 and PPSV23, from 6-12 months to at least one year for immunocompetent adults aged ≥ 65 years who have not previously received pneumococcal vaccine. For immunocompromised vaccine-naïve adults, the minimum acceptable interval between PCV13 and PPSV23 is 8 weeks. Both immunocompetent and immunocompromised adults aged ≥ 65 years who have previously received a dose of PPSV23 when over the age of 65 should receive a dose of PCV13 at least one year after PPSV23 (≥ 1 year).

Immunocompetent and immunocompromised adults aged ≥ 65 who have previously received a dose of PPSV23 when

under the age of 65, should also receive a dose of PCV13 at least one year after PPSV23 (≥ 1 year) and then another dose of PPSV23 at least one year after PCV13. It is recommended that for those that have this alternative three-dose schedule (2 PPSV23 and 1 PCV13), the three doses should be spread over a time period of five or more years (Kobayashi, 2015).

COPYRIGHT:

Physician Performance Measure (Measures) and related data specifications were developed by the National Committee for Quality Assurance (NCQA). These performance Measures are not clinical guidelines and do not establish a standard of medical care, and have not been tested for all potential applications. NCQA makes no representations, warranties or endorsements about the quality of any organization or clinician who uses or reports performance measures. NCQA has no liability to anyone who relies on measures and specifications or data reflective of performance under such measures and specifications.

The Measures are copyrighted but can be reproduced and distributed, without modification, for noncommercial purposes (eg, use by healthcare providers in connection with their practices). Commercial use is defined as the sale, licensing, or distribution of the Measures for commercial gain, or incorporation of the Measures into a product or service that is sold, licensed or distributed for commercial gain. All commercial uses or requests for alteration of the measures and specifications must be approved by NCQA and are subject to a license at the discretion of NCQA. NCQA is not responsible for any use of the Measures. © 2020 NCQA. All Rights Reserved.

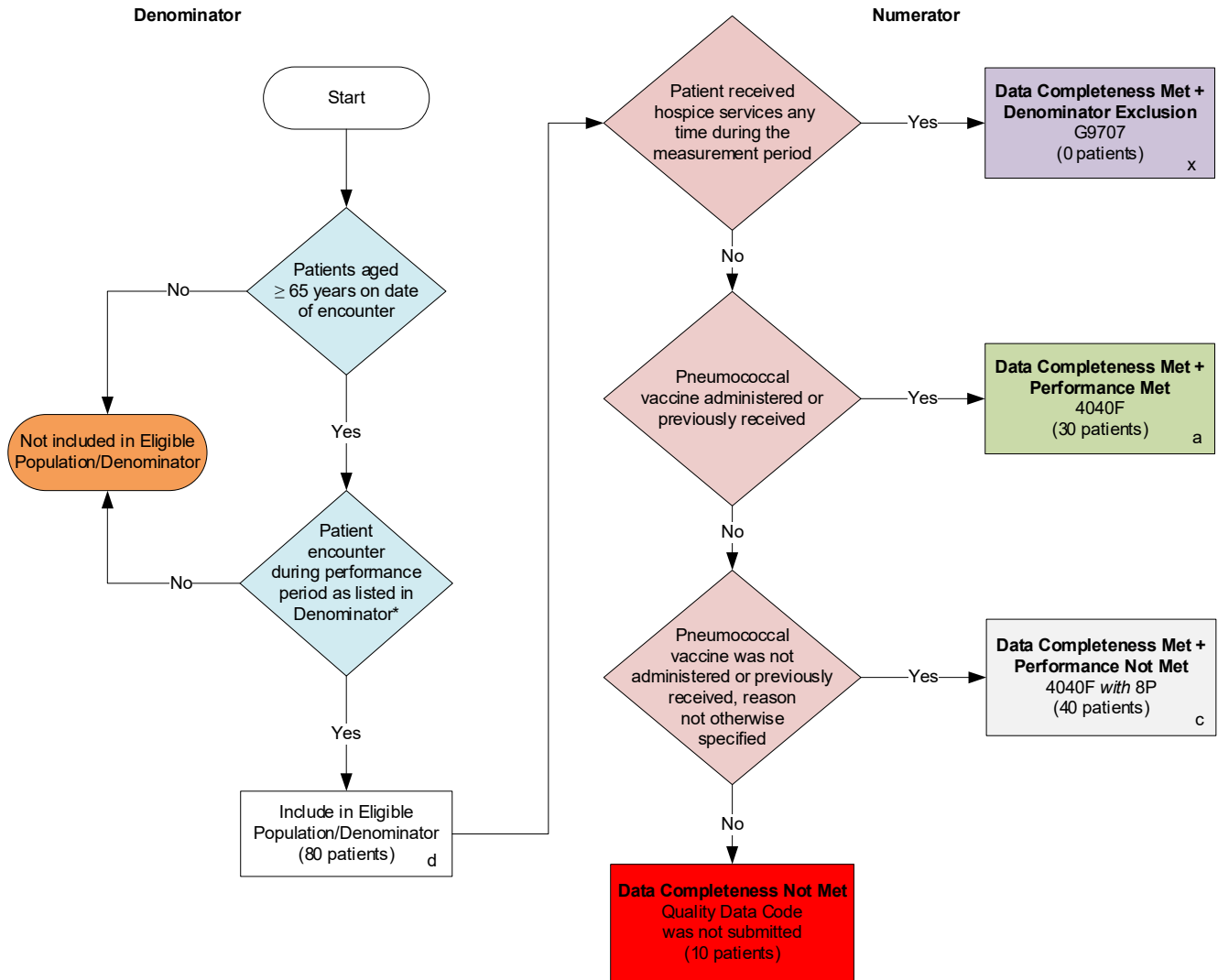
THE MEASURES AND SPECIFICATIONS ARE PROVIDED "AS IS" WITHOUT WARRANTY OF ANY KIND.

Limited proprietary coding is contained in the Measure specifications for user convenience. Users of proprietary code sets should obtain all necessary licenses from the owners of the code sets. NCQA disclaims all liability for use or accuracy of any CPT or other codes contained in the specifications.

CPT® contained in the Measure specifications is copyright 2004-2020 American Medical Association. LOINC® copyright 2004-2020 Regenstrief Institute, Inc. This material contains SNOMED Clinical Terms® (SNOMED CT®) copyright 2004-2020 International Health Terminology Standards Development Organisation. ICD-10 copyright 2020 World Health Organization. All Rights Reserved.

2021 Medicare Part B Claims Flow for Quality ID #111: Pneumococcal Vaccination Status for Older Adults

Disclaimer: Refer to the measure specification for specific coding and instructions to submit this measure.



SAMPLE CALCULATIONS

Data Completeness=

$$\frac{\text{Denominator Exclusion (x=0 patients)} + \text{Performance Met (a=30 patients)} + \text{Performance Not Met (c=40 patients)}}{\text{Eligible Population / Denominator (d=80 patients)}} = \frac{70 \text{ patients}}{80 \text{ patients}} = 87.50\%$$

Performance Rate=

$$\frac{\text{Performance Met (a=30 patients)}}{\text{Data Completeness Numerator (70 patients) - Denominator Exclusion (x=0 patients)}} = \frac{30 \text{ patients}}{70 \text{ patients}} = 42.86\%$$

* See the posted measure specification for specific coding and instructions to submit this measure.
NOTE: Submission Frequency: Patient-Process

CPT only copyright 2020 American Medical Association. All rights reserved.
The measure diagrams were developed by CMS as a supplemental resource to be used in conjunction with the measure specifications. They should not be used alone or as a substitution for the measure specification. v5

**2021 Medicare Part B Claims Flow Narrative for Quality ID #111:
Pneumococcal Vaccination Status for Older Adults**

Disclaimer: Refer to the measure specification for specific coding and instructions to submit this measure.

1. Start with Denominator
2. Check *Patients aged greater than or equal to 65 years on date of encounter*:
 - a. If *Patients aged greater than or equal to 65 years on date of encounter* equals No, do not include in *Eligible Population/Denominator*. Stop processing.
 - b. If *Patients aged greater than or equal to 65 years on date of encounter* equals Yes, proceed to check *Patient encounter during performance period as listed in Denominator**.
3. Check *Patient encounter during performance period as listed in Denominator**:
 - a. If *Patient encounter during performance period as listed in Denominator** equals No, do not include in *Eligible Population/Denominator*. Stop processing.
 - b. If *Patient encounter during performance period as listed in Denominator** equals Yes, include in *Eligible Population/Denominator*.
4. Denominator Population:
 - a. Denominator Population is all Eligible Patients in the Denominator. Denominator is represented as Denominator in the Sample Calculation listed at the end of this document. Letter d equals 80 patients in the Sample Calculation.
5. Start Numerator
6. Check *Patient received hospice services any time during the measurement period*:
 - a. If *Patient received hospice services any time during the measurement period* equals Yes, include in *Data Completeness Met and Denominator Exclusion*.
 - *Data Completeness Met and Denominator Exclusion* letter is represented as Data Completeness and Performance Rate in the Sample Calculation listed at the end of this document. Letter x equals 0 patients in the Sample Calculation.
 - b. If *Patient received hospice services any time during the measurement period* equals No, proceed to check *Pneumococcal vaccine administered or previously received*.
7. Check *Pneumococcal vaccine administered or previously received*:
 - a. If *Pneumococcal vaccine administered or previously received* equals Yes, include in *Data Completeness Met and Performance Met*.
 - *Data Completeness Met and Performance Met* letter is represented as Data Completeness and Performance Rate in the Sample Calculation listed at the end of this document. Letter a equals 30 patients in the Sample Calculation.
 - b. If *Pneumococcal vaccine administered or previously received* equals No, proceed to check *Pneumococcal vaccine was not administered or previously received, reason not otherwise specified*.
8. Check *Pneumococcal vaccine was not administered or previously received, reason not otherwise specified*

- a. If *Pneumococcal vaccine was not administered or previously received, reason not otherwise specified* equals Yes, include in *Data Completeness Met and Performance Not Met*.

- *Data Completeness Met and Performance Not Met* letter is represented as Data Completeness in the Sample Calculation listed at the end of this document. Letter c equals 40 patients in the Sample Calculation.

- b. If *Pneumococcal vaccine was not administered or previously received, reason not otherwise specified* equals No, proceed to check *Data Completeness Not Met*.

9. Check *Data Completeness Not Met*:

- a. If *Data Completeness Not Met*, the Quality Data Code was not submitted. 10 patients have been subtracted from the Data Completeness Numerator in the Sample Calculation.

Sample Calculations:

Data Completeness equals Denominator Exclusion (x equals 0 patients) plus Performance Met (a equals 30 patients) plus Performance Not Met (c equals 40 patients) divided by Eligible Population/Denominator (d equals 80 patients). All equals 70 patients divided by 80 patients. All equals 87.50 percent.

Performance Rate equals Performance Met (a equals 30 patients) divided by Data Completeness Numerator (70 patients) minus Denominator Exclusion (x equals 0 patients). All equals 30 patients divided by 70 patients. All equals 42.86 percent.

*See the posted measure specification for specific coding and instructions to submit this measure.

NOTE: Submission Frequency: Patient-process

The measure diagrams were developed by CMS as a supplemental resource to be used in conjunction with the measure specifications. They should not be used alone or as a substitution for the measure specification.