

**Quality ID#437: Rate of Surgical Conversion from Lower Extremity Endovascular Revascularization Procedure**

- National Quality Strategy Domain: Patient Safety**
- Meaningful Measure Area: Preventable Healthcare Harm**

**2020 COLLECTION TYPE:**  
**MEDICARE PART B CLAIMS**

**MEASURE TYPE:**  
Outcome – High Priority

**DESCRIPTION:**  
Inpatients assigned to endovascular treatment for obstructive arterial disease, the percent of patients who undergo unplanned major amputation or surgical bypass within 48 hours of the index procedure

**INSTRUCTIONS:**  
This measure is to be submitted **each time** an endovascular lower extremity revascularization procedure is performed during the performance period. There is no diagnosis associated with this measure. This measure may be submitted by Merit-based Incentive Payment System (MIPS) eligible clinicians who perform the quality actions described in the measure based on the services provided and the measure-specific denominator coding.

***NOTE:*** Include only patients undergoing an endovascular lower extremity revascularization procedure through December 29 of the performance period. This will allow the evaluation of at least 48 hours of the procedure within the performance period.

**Measure Submission Type:**  
Measure data may be submitted by individual MIPS eligible clinicians using Medicare Part B claims. The listed denominator criteria are used to identify the intended patient population. The numerator quality-data codes included in this specification are used to submit the quality actions allowed by the measure on the claim form(s). All measure-specific coding should be submitted on the claim(s) representing the denominator eligible encounter and selected numerator option.

**DENOMINATOR:**  
Patients undergoing endovascular lower extremity revascularization

**Denominator Criteria (Eligible Cases):**

All patients, regardless of age

**AND**

**Patient procedure during the performance period (CPT):** 37220, 37221, 37224, 37225, 37226, 37227, 37228, 37229, 37230, 37231

**NUMERATOR:**  
Number of patients undergoing major amputation or open surgical bypass within 48 hours of the index endovascular lower extremity revascularization procedure

**Definition:**  
**Major Amputation** – An amputation at the level of the ankle or above

**Numerator Instructions:**  
**INVERSE MEASURE** - A lower calculated performance rate for this measure indicates better clinical care or control. The “Performance Not Met” numerator option for this measure is the representation of the better clinical quality or control. Submitting that numerator option will produce a performance rate that trends

closer to 0%, as quality increases. For inverse measures, a rate of 100% means all of the denominator eligible patients did not receive the appropriate care or were not in proper control.

**Numerator Quality-Data Coding Options:**

**Planned Hybrid or Staged Procedure, Patient not Eligible**

***Denominator Exclusion: G9640:***

Documentation of planned hybrid or staged procedure

**OR**

**Surgical Conversion needed during Endovascular Lower Extremity Revascularization Procedure**

***Performance Met: G9641:***

Major amputation or open surgical bypass required within 48 hours of the index endovascular lower extremity revascularization procedure

**OR**

**Surgical Conversion not needed during Endovascular Lower Extremity Revascularization Procedure, Reason not Given**

***Performance Not Met: G9639:***

Major amputation or open surgical bypass not required within 48 hours of the index endovascular lower extremity revascularization procedure

**RATIONALE:**

Conversions from a planned lower extremity endovascular revascularization procedure to an unanticipated surgical procedure indicates either poor patient assessment/procedural assignment, or procedural failure. Patients who undergo unplanned surgical conversion have a higher cost of care and higher morbidity and mortality. In addition, there is a higher expense for dual procedures, with use of endovascular tools and surgical procedural time and equipment, as well as longer length of stay and rehabilitation. Physicians performing endovascular revascularization for arterial insufficiency should assess patient suitability for such interventions, involving their surgical colleagues in treatment planning when appropriate.

**CLINICAL RECOMMENDATION STATEMENTS:**

Studies show higher rates of limb salvage in patients with foot ulcers after surgical or catheter based restoration of arterial blood flow than with medical therapy alone, but there is insufficient robust data to indicate better outcomes with endovascular or open bypass treatment of arterial insufficiency in this patient group. Both amputation-free survival and quality of life outcomes have been shown to be comparable for patients with critical limb ischemia treated with either open bypass or endovascular repair, but the bypass-first strategy has been shown to be more costly. There are many studies suggesting benefit of an endovascular-first approach to limb salvage because of the proposed patient benefits, including ability to avoid general anesthesia for these procedures, avoidance of a surgical incision and attendant healing time, shorter length of hospital stay with endovascular revascularization when compared to bypass, strong patient preference for endovascular approaches, and decreased cost of a successful endovascular approach.

Although long term limb salvage outcomes are equivalent regardless of the initial strategy adopted, some data indicate a high rate of early technical failure of endovascular treatment of critical limb ischemia, but high secondary patency rates and high limb conservation rates in spite of initial technical failures, indicating that repeat procedures, both endovascular and open, tend to be successful in this patient group. A meta-analysis of 30 studies of below knee angioplasty showed a higher technical failure rate of endovascular treatment than that seen with open (bypass) repair. This same meta-analysis reports that repeat procedures in patients with endovascular- first failures were more likely to be bypass procedures than repeated endovascular procedures. Another study of 1023 patients undergoing either endovascular or open surgical treatment for critical limb ischemia demonstrated a higher rate of secondary surgical procedures in the endovascular group compared with the surgical group, but again showed comparable 5-year limb salvage rates in the two groups.

Notably, it has been demonstrated that the difference in patency rates and differences in rates of conversion to bypass appear to be partly related to the specialty of the operator, based on studies of procedural failure and open conversion rates in different physician groups. Two large studies of extracted data, one of Medicare claims data

assessing mortality, transfusion rates, intensive care unit use, length of stay, and subsequent repeat revascularization procedures or amputation, and one of National Inpatient Sample (NIS) data reviewing in-hospital mortality and iatrogenic arterial injuries, showed statistically significant differences in outcomes across physician groups. One of these studies (Zafar, et al.) suggested that there may be a higher use of repeat intervention, including adjunctive, unplanned surgical bypass, and a higher rate of amputation following a primary endovascular procedure in some physician cohorts. The reasons for this discrepancy are unclear, and may represent patient selection, operator bias towards endovascular revascularization in all comers, technical ability, or other factors.

The newly-approved National Heart, Lung, and Blood Institute (NHLBI) trial, Best Endovascular vs. Best Surgical Therapy in Patients with Critical Limb Ischemia, proposes to look at outcomes, including open conversions and amputations, in a cohort of patients randomized to open vs. endovascular therapy. This trial will be multidisciplinary, evaluating all specialists involved in procedural care of this group of patients, and will ultimately provide guidance for physicians in terms of patient assignment to open vs. endovascular care, and will establish solid data to support thresholds for conversion and amputation. However, data will not be available for years to come.

This measure proposes, based on the data available in the existing literature, to track use of repeat or unplanned adjunctive surgical (bypass or amputation) procedures in patients undergoing revascularization procedures for lower extremity arterial insufficiency. It is expected that this rate should be equivalent across all physician groups performing endovascular procedures when adjusted for specific patient risk factors. With establishment of a baseline benchmark rate for conversion to surgical therapy based on existing data from the Medicare sample, rates of conversion may be tracked to encourage appropriate patient selection or referral to expert operators to improve patient outcomes and reduce excessive resource use by selection of the most appropriate procedure and procedural operator.

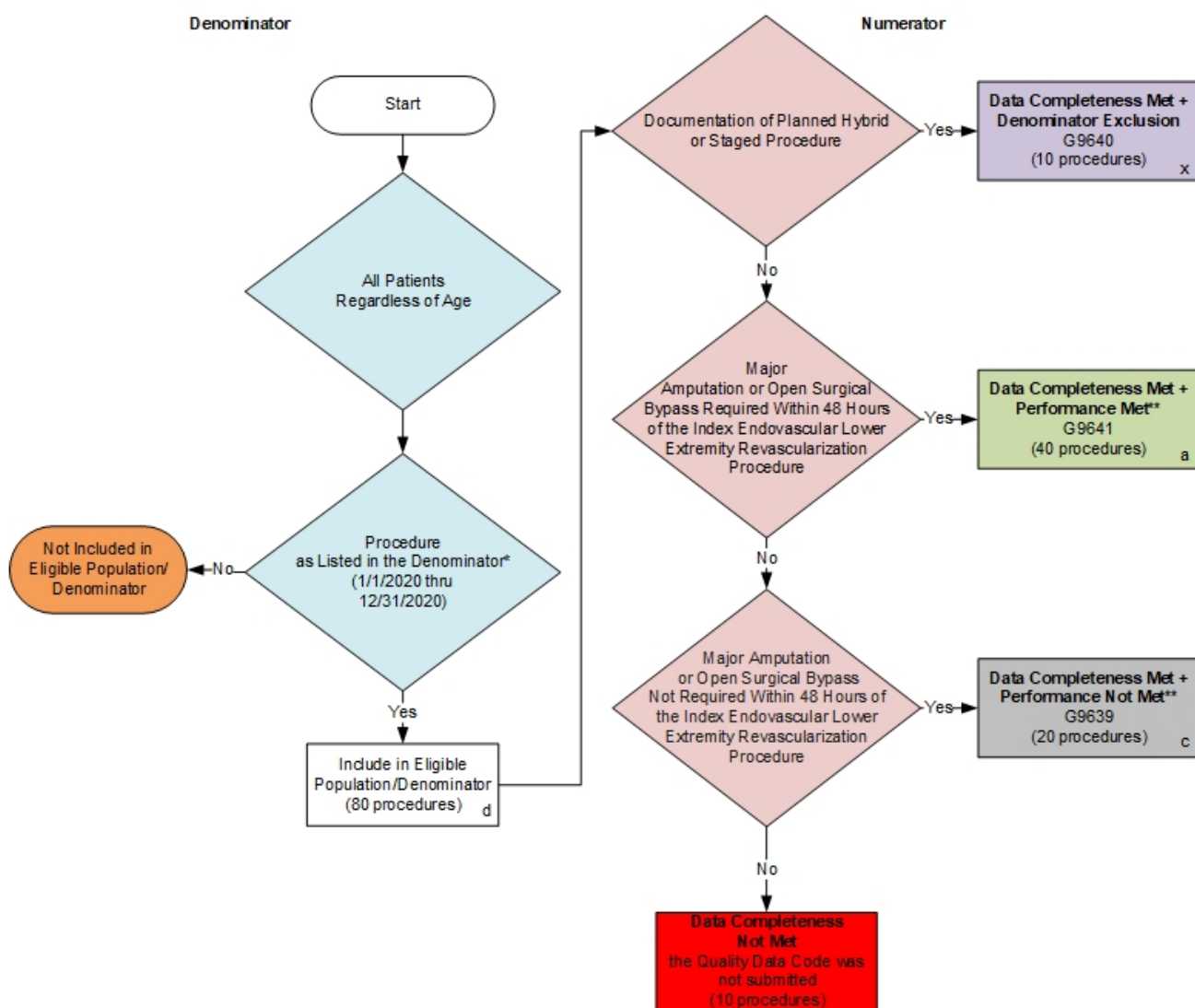
**COPYRIGHT:**

2019 Society of Interventional Radiology.

CPT® contained in the measure specifications is copyright 2004-2019 American Medical Association. All Rights Reserved.

**2020 Medicare Part B Claims Flow for Quality ID #437:  
Rate of Surgical Conversion from Lower Extremity Endovascular Revascularization Procedure**

**Disclaimer:** Refer to the measure specification for specific coding and instructions to submit this measure.



**SAMPLE CALCULATIONS:**

**Data Completeness=**

$$\frac{\text{Denominator Exclusion (x=10 procedures)} + \text{Performance Met (a=40 procedures)} + \text{Performance Not Met (c=20 procedures)}}{\text{Eligible Population / Denominator (d=80 procedures)}} = \frac{70 \text{ procedures}}{80 \text{ procedures}} = 87.50\%$$

**Performance Rate=**

$$\frac{\text{Performance Met (a=40 procedures)}}{\text{Data Completeness Numerator (70 procedures) - Denominator Exclusion (x=10 procedures)}} = \frac{40 \text{ procedures}}{60 \text{ procedures}} = 66.67\%$$

\*See the posted measure specification for specific coding and instructions to submit this measure.

\*\*A lower calculated performance rate for this measure indicates better clinical care or control.

NOTE: Submission Frequency: Procedure

CPT only copyright 2019 American Medical Association. All rights reserved.  
The measure diagrams were developed by CMS as a supplemental resource to be used in conjunction with the measure specifications. They should not be used alone or as a substitution for the measure specification.

v4

**2020 Medicare Part B Claims Flow Narrative for Quality ID #437:**  
**Rate of Surgical Conversion from Lower Extremity Endovascular Revascularization Procedure**

**Disclaimer:** Refer to the measure specification for specific coding and instructions to submit this measure.

1. Start with Denominator
2. All Patients Regardless of Age
3. Check Procedure Performed:
  - a. If Procedure as Listed in the Denominator equals No, do not include in Eligible Population. Stop Processing.
  - b. If Procedure as Listed in the Denominator equals Yes, include in Eligible Population.
4. Denominator Population:
  - a. Denominator Population is all Eligible Procedures in the Denominator. Denominator is represented as Denominator in the Sample Calculation listed at the end of this document. Letter d equals 80 procedures in the Sample Calculation.
5. Start Numerator
6. Check Documentation of Planned Hybrid or Staged Procedure:
  - a. If Documentation of Planned Hybrid or Staged Procedure equals Yes, include in Data Completeness Met and Denominator Exclusion.
  - b. Data Completeness Met and Denominator Exclusion letter is represented in the Data Completeness and Performance Rate in the Sample Calculation listed at the end of this document. Letter x equals 10 procedures in the Sample Calculation.
  - c. If Documentation of Planned Hybrid or Staged Procedure equals No, proceed to check Major Amputation or Open Surgical Bypass required within 48 hours of the Index Endovascular Lower Extremity Revascularization Procedure.
7. Check Major Amputation or Open Surgical Bypass Required Within 48 hours of the Index Endovascular Lower Extremity Revascularization Procedure:
  - a. If Major Amputation or Open Surgical Bypass Required Within 48 hours of the Index Endovascular Lower Extremity Revascularization Procedure equals Yes, include in Data Completeness Met and Performance Met.
  - b. Data Completeness Met and Performance Met letter is represented in the Data Completeness and Performance Rate in the Sample Calculation listed at the end of this document. Letter a equals 40 procedures in the Sample Calculation.
  - c. If Major Amputation or Open Surgical Bypass Required Within 48 hours of the Index Endovascular Lower Extremity Revascularization Procedure equals No, proceed to check Major Amputation or Open Surgical Bypass Not Required Within 48 Hours of the Index Endovascular Lower Extremity Revascularization Procedure.

8. Check Major Amputation or Open Surgical Bypass Not Required Within 48 Hours of the Index Endovascular Lower Extremity Revascularization Procedure:
  - a. If Major Amputation or Open Surgical Bypass Not Required Within 48 Hours of the Index Endovascular Lower Extremity Revascularization Procedure equals Yes, include in Data Completeness Met and Performance Not Met.
  - b. Data Completeness Met and Performance Not Met letter is represented in the Data Completeness in the Sample Calculation listed at the end of this document. Letter c equals 20 procedures in the Sample Calculation.
  - c. If Major Amputation or Open Surgical Bypass Not Required Within 48 Hours of the Index Endovascular Lower Extremity Revascularization Procedure equals No, proceed to check Data Completeness Not Met.
9. Check Data Completeness Not Met:
  - a. If Data Completeness Not Met, the Quality Data Code was not submitted. 10 procedures have been subtracted from the Data Completeness Numerator in the Sample Calculation.

**SAMPLE CALCULATION S:**

**Data Completeness=**

$$\frac{\text{Denominator Exclusion (x=10 procedures)} + \text{Performance Met (a=40 procedures)} + \text{Performance Not Met (c=20 procedures)}}{\text{Eligible Population / Denominator (d=80 procedures)}} = \frac{70 \text{ procedures}}{80 \text{ procedures}} = 87.50\%$$

**Performance Rate=**

$$\frac{\text{Performance Met (a=40 procedures)}}{\text{Data Completeness Numerator (70 procedures) - Denominator Exclusion (x=10 procedures)}} = \frac{40 \text{ procedures}}{60 \text{ procedures}} = 66.67\%$$