

**Quality ID #418 (NQF 0053): Osteoporosis Management in Women Who Had a Fracture**  
– National Quality Strategy Domain: Effective Clinical Care  
– Meaningful Measure Area: Management of Chronic Conditions

**2019 COLLECTION TYPE:**  
**MEDICARE PART B CLAIMS**

**MEASURE TYPE:**  
Process

**DESCRIPTION:**

The percentage of women age 50-85 who suffered a fracture in the six months prior to the performance period through June 30 of the performance period and who either had a bone mineral density test or received a prescription for a drug to treat osteoporosis in the six months after the fracture

**INSTRUCTIONS:**

This measure is to be submitted after **each occurrence** of a fracture during the six months prior to the performance period through June 30 of the performance period. It is anticipated that Merit-based Incentive Payment System (MIPS) eligible clinicians who treat any fracture except fractures of the finger, toe, face or skull will submit this measure. Each occurrence of a fracture is identified by either an ICD-10-CM diagnosis code for fracture and a CPT service code OR an ICD-10-CM diagnosis code for a fracture and a CPT procedure code for surgical treatment of fractures.

**NOTE:** *Patients with any fracture except fractures of the finger, toe, face or skull should have a bone mineral density (BMD) measurement performed or pharmacologic therapy prescribed. The management (BMD performed or pharmacologic therapy prescribed) should occur within six months of the fracture. If multiple fractures occurring on the same date of service are submitted on the same claim form, only one instance of submission will be counted. Claims data will be analyzed to determine unique occurrences. Patients already receiving pharmacologic therapy would automatically meet the intent of this measure.*

**Measure Submission Type:**

Measure data may be submitted by individual MIPS eligible clinicians using Medicare Part B claims. The listed denominator criteria are used to identify the intended patient population. The numerator quality-data codes included in this specification are used to submit the quality actions allowed by the measure on the claim form(s). All measure-specific coding should be submitted on the claim(s) representing the denominator eligible encounter and selected numerator option.

The intent of the exclusion for individuals age 65 and older residing long-term care facilities, including nursing homes, is to exclude individuals who may have limited life expectancy and increased frailty where the benefit of the process may not exceed the risks. This exclusion is not intended as a clinical recommendation regarding whether the measures process is inappropriate for specific populations, instead the exclusions allows clinicians to engage in shared decision making with patients about the benefits and risks of screening when an individual has limited life expectancy.

**DENOMINATOR:**

Women who experienced a fracture, except fractures of the finger, toe, face or skull, during the six months prior to the performance period through June 30 of the performance period

**Option 1 - Denominator Criteria (Eligible Cases):**

Patients aged 50-85 years on date of encounter

**AND**

**Diagnosis for any fracture except fractures of the finger, toe, face or skull (ICD-10-CM):** M48.40XA, M48.41XA, M48.42XA, M48.43XA, M48.44XA, M48.45XA, M48.46XA, M48.47XA, M48.48XA, M80.00XA, M80.011A, M80.012A, M80.019A, M80.021A, M80.022A, M80.029A, M80.031A, M80.032A, M80.039A, M80.041A, M80.042A, M80.049A, M80.051A, M80.052A, M80.059A, M80.061A, M80.062A, M80.069A,

M80.071A, M80.072A, M80.079A, M80.08XA, M80.80XA, M80.811A, M80.812A, M80.819A, M80.821A, M80.822A, M80.829A, M80.831A, M80.832A, M80.839A, M80.841A, M80.842A, M80.8494A, M80.851A, M80.852A, M80.859A, M80.861A, M80.862A, M80.869A, M80.871A, M80.872A, M80.879A, M80.88XA, M84.311A, M84.312A, M84.319A, M84.321A, M84.322A, M84.329A, M84.331A, M84.332A, M84.333A, M84.334A, M84.339A, M84.341A, M84.342A, M84.343A, M84.350A, M84.351A, M84.352A, M84.353A, M84.359A, M84.361A, M84.362A, M84.363A, M84.364A, M84.369A, M84.371A, M84.372A, M84.373A, M84.374A, M84.375A, M84.376A, M84.38XA, M84.750A, M84.751A, M84.752A, M84.753A, M84.754A, M84.755A, M84.756A, M84.757A, M84.759A, M97.01XA, M97.02XA, M97.11XA, M97.12XA, M97.21XA, M97.22XA, M97.31XA, M97.32XA, M97.41XA, M97.42XA, S12.000A, S12.000B, S12.001A, S12.001B, S12.01XA, S12.01XB, S12.02XA, S12.02XB, S12.030A, S12.030B, S12.031A, S12.031B, S12.040A, S12.040B, S12.041A, S12.041B, S12.090A, S12.090B, S12.091A, S12.091B, S12.100A, S12.100B, S12.101A, S12.101B, S12.110A, S12.110B, S12.111A, S12.111B, S12.112A, S12.112B, S12.120A, S12.120B, S12.121A, S12.121B, S12.130A, S12.130B, S12.131A, S12.131B, S12.14XA, S12.14XB, S12.150A, S12.150B, S12.151A, S12.151B, S12.190A, S12.190B, S12.191A, S12.191B, S12.200A, S12.200B, S12.201A, S12.201B, S12.230A, S12.230B, S12.231A, S12.231B, S12.24XA, S12.24XB, S12.250A, S12.250B, S12.251A, S12.251B, S12.290A, S12.290B, S12.291A, S12.291B, S12.300A, S12.300B, S12.301A, S12.301B, S12.330A, S12.330B, S12.331A, S12.331B, S12.34XA, S12.34XB, S12.350A, S12.350B, S12.351A, S12.351B, S12.390A, S12.390B, S12.391A, S12.391B, S12.400A, S12.400B, S12.401A, S12.401B, S12.430A, S12.430B, S12.431A, S12.431B, S12.44XA, S12.44XB, S12.450A, S12.450B, S12.451A, S12.451B, S12.490A, S12.490B, S12.491A, S12.491B, S12.500A, S12.500B, S12.501A, S12.501B, S12.530A, S12.530B, S12.531A, S12.531B, S12.54XA, S12.54XB, S12.550A, S12.550B, S12.551A, S12.551B, S12.590A, S12.590B, S12.591A, S12.591B, S12.600A, S12.600B, S12.601A, S12.601B, S12.630A, S12.630B, S12.631A, S12.631B, S12.64XA, S12.64XB, S12.650A, S12.650B, S12.651A, S12.651B, S12.690A, S12.690B, S12.691A, S12.691B, S12.8XXA, S12.9XXA, S22.000A, S22.000B, S22.001A, S22.001B, S22.002A, S22.002B, S22.008A, S22.008B, S22.009A, S22.009B, S22.010A, S22.010B, S22.011A, S22.011B, S22.012A, S22.012B, S22.018A, S22.018B, S22.019A, S22.019B, S22.020A, S22.020B, S22.021A, S22.021B, S22.022A, S22.022B, S22.028A, S22.028B, S22.029A, S22.029B, S22.030A, S22.030B, S22.031A, S22.031B, S22.032A, S22.032B, S22.038A, S22.038B, S22.039A, S22.039B, S22.040A, S22.040B, S22.041A, S22.041B, S22.042A, S22.042B, S22.048A, S22.048B, S22.049A, S22.049B, S22.050A, S22.050B, S22.051A, S22.051B, S22.052A, S22.052B, S22.058A, S22.058B, S22.059A, S22.059B, S22.060A, S22.060B, S22.061A, S22.061B, S22.062A, S22.062B, S22.068A, S22.068B, S22.069A, S22.069B, S22.070A, S22.070B, S22.071A, S22.071B, S22.072A, S22.072B, S22.078A, S22.078B, S22.079A, S22.079B, S22.080A, S22.080B, S22.081A, S22.081B, S22.082A, S22.082B, S22.088A, S22.088B, S22.089A, S22.089B, S22.20XA, S22.20XB, S22.21XA, S22.21XB, S22.22XA, S22.22XB, S22.23XA, S22.23XB, S22.24XA, S22.24XB, S22.31XA, S22.31XB, S22.32XA, S22.32XB, S22.39XA, S22.39XB, S22.41XA, S22.41XB, S22.42XA, S22.42XB, S22.43XA, S22.43XB, S22.49XA, S22.49XB, S22.5XXA, S22.5XXB, S22.9XXA, S22.9XXB, S32.000A, S32.000B, S32.001A, S32.001B, S32.002A, S32.002B, S32.008A, S32.008B, S32.009A, S32.009B, S32.010A, S32.010B, S32.011A, S32.011B, S32.012A, S32.012B, S32.018A, S32.018B, S32.019A, S32.019B, S32.020A, S32.020B, S32.021A, S32.021B, S32.022A, S32.022B, S32.028A, S32.028B, S32.029A, S32.029B, S32.030A, S32.030B, S32.031A, S32.031B, S32.032A, S32.032B, S32.038A, S32.038B, S32.039A, S32.039B, S32.040A, S32.040B, S32.041A, S32.041B, S32.042A, S32.042B, S32.048A, S32.048B, S32.049A, S32.049B, S32.050A, S32.050B, S32.051A, S32.051B, S32.052A, S32.052B, S32.058A, S32.058B, S32.059A, S32.059B, S32.10XA, S32.10XB, S32.110A, S32.110B, S32.111A, S32.111B, S32.112A, S32.112B, S32.119A, S32.119B, S32.120A, S32.120B, S32.121A, S32.121B, S32.122A, S32.122B, S32.129A, S32.129B, S32.130A, S32.130B, S32.131A, S32.131B, S32.132A, S32.132B, S32.139A, S32.139B, S32.14XA, S32.14XB, S32.15XA, S32.15XB, S32.16XA, S32.16XB, S32.17XA, S32.17XB, S32.19XA, S32.19XB, S32.2XXA, S32.2XXB, S32.301A, S32.301B, S32.302A, S32.302B, S32.309A, S32.309B, S32.311A, S32.311B, S32.312A, S32.312B, S32.313A, S32.313B, S32.314A, S32.314B, S32.315A, S32.315B, S32.316A, S32.316B, S32.391A, S32.391B, S32.392A, S32.392B, S32.399A, S32.399B, S32.401A, S32.401B, S32.402A, S32.402B, S32.409A, S32.409B, S32.411A, S32.411B, S32.412A, S32.412B, S32.413A, S32.413B, S32.414A, S32.414B, S32.415A, S32.415B, S32.416A, S32.416B, S32.421A, S32.421B, S32.422A, S32.422B, S32.423A, S32.423B, S32.424A, S32.424B, S32.425A, S32.425B, S32.426A, S32.426B,



S42.90XA, S42.90XB, S42.91XA, S42.91XB, S42.92XA, S42.92XB, S49.001A, S49.002A, S49.009A, S49.011A, S49.012A, S49.019A, S49.021A, S49.022A, S49.029A, S49.031A, S49.032A, S49.039A, S49.041A, S49.042A, S49.049A, S49.091A, S49.092A, S49.099A, S49.101A, S49.102A, S49.109A, S49.111A, S49.112A, S49.119A, S49.121A, S49.122A, S49.129A, S49.131A, S49.132A, S49.139A, S49.141A, S49.142A, S49.149A, S49.191A, S49.192A, S49.199A, S52.001A, S52.001B, S52.001C, S52.002A, S52.002B, S52.002C, S52.009A, S52.009B, S52.009C, S52.011A, S52.012A, S52.019A, S52.021A, S52.021B, S52.021C, S52.022A, S52.022B, S52.022C, S52.023A, S52.023B, S52.023C, S52.024A, S52.024B, S52.024C, S52.025A, S52.025B, S52.025C, S52.026A, S52.026B, S52.026C, S52.031A, S52.031B, S52.031C, S52.032A, S52.032B, S52.032C, S52.033A, S52.033B, S52.033C, S52.034A, S52.034B, S52.034C, S52.035A, S52.035B, S52.035C, S52.036A, S52.036B, S52.036C, S52.041A, S52.041B, S52.041C, S52.042A, S52.042B, S52.042C, S52.043A, S52.043B, S52.043C, S52.044A, S52.044B, S52.044C, S52.045A, S52.045B, S52.045C, S52.046A, S52.046B, S52.046C, S52.091A, S52.091B, S52.091C, S52.092A, S52.092B, S52.092C, S52.099A, S52.099B, S52.099C, S52.101A, S52.101B, S52.101C, S52.102A, S52.102B, S52.102C, S52.109A, S52.109B, S52.109C, S52.111A, S52.112A, S52.119A, S52.121A, S52.121B, S52.121C, S52.122A, S52.122B, S52.122C, S52.123A, S52.123B, S52.123C, S52.124A, S52.124B, S52.124C, S52.125A, S52.125B, S52.125C, S52.126A, S52.126B, S52.126C, S52.131A, S52.131B, S52.131C, S52.132A, S52.132B, S52.132C, S52.133A, S52.133B, S52.133C, S52.134A, S52.134B, S52.134C, S52.135A, S52.135B, S52.135C, S52.136A, S52.136B, S52.136C, S52.181A, S52.181B, S52.181C, S52.182A, S52.182B, S52.182C, S52.189A, S52.189B, S52.189C, S52.201A, S52.201B, S52.201C, S52.202A, S52.202B, S52.202C, S52.209A, S52.209B, S52.209C, S52.211A, S52.212A, S52.219A, S52.221A, S52.221B, S52.221C, S52.222A, S52.222B, S52.222C, S52.223A, S52.223B, S52.223C, S52.224A, S52.224B, S52.224C, S52.225A, S52.225B, S52.225C, S52.226A, S52.226B, S52.226C, S52.231A, S52.231B, S52.231C, S52.232A, S52.232B, S52.232C, S52.233A, S52.233B, S52.233C, S52.234A, S52.234B, S52.234C, S52.235A, S52.235B, S52.235C, S52.236A, S52.236B, S52.236C, S52.241A, S52.241B, S52.241C, S52.242A, S52.242B, S52.242C, S52.243A, S52.243B, S52.243C, S52.244A, S52.244B, S52.244C, S52.245A, S52.245B, S52.245C, S52.246A, S52.246B, S52.246C, S52.251A, S52.251B, S52.251C, S52.252A, S52.252B, S52.252C, S52.253A, S52.253B, S52.253C, S52.254A, S52.254B, S52.254C, S52.255A, S52.255B, S52.255C, S52.256A, S52.256B, S52.256C, S52.261A, S52.261B, S52.261C, S52.262A, S52.262B, S52.262C, S52.263A, S52.263B, S52.263C, S52.264A, S52.264B, S52.264C, S52.265A, S52.265B, S52.265C, S52.266A, S52.266B, S52.266C, S52.271A, S52.271B, S52.271C, S52.272A, S52.272B, S52.272C, S52.279A, S52.279B, S52.279C, S52.281A, S52.281B, S52.281C, S52.282A, S52.282B, S52.282C, S52.283A, S52.283B, S52.283C, S52.291A, S52.291B, S52.291C, S52.292A, S52.292B, S52.292C, S52.299A, S52.299B, S52.299C, S52.301A, S52.301B, S52.301C, S52.302A, S52.302B, S52.302C, S52.309A, S52.309B, S52.309C, S52.311A, S52.312A, S52.319A, S52.321A, S52.321B, S52.321C, S52.322A, S52.322B, S52.322C, S52.323A, S52.323B, S52.323C, S52.324A, S52.324B, S52.324C, S52.325A, S52.325B, S52.325C, S52.326A, S52.326B, S52.326C, S52.331A, S52.331B, S52.331C, S52.332A, S52.332B, S52.332C, S52.333A, S52.333B, S52.333C, S52.334A, S52.334B, S52.334C, S52.335A, S52.335B, S52.335C, S52.336A, S52.336B, S52.336C, S52.341A, S52.341B, S52.341C, S52.342A, S52.342B, S52.342C, S52.343A, S52.343B, S52.343C, S52.344A, S52.344B, S52.344C, S52.345A, S52.345B, S52.345C, S52.346A, S52.346B, S52.346C, S52.351A, S52.351B, S52.351C, S52.352A, S52.352B, S52.352C, S52.353A, S52.353B, S52.353C, S52.354A, S52.354B, S52.354C, S52.355A, S52.355B, S52.355C, S52.356A, S52.356B, S52.356C, S52.361A, S52.361B, S52.361C, S52.362A, S52.362B, S52.362C, S52.363A, S52.363B, S52.363C, S52.364A, S52.364B, S52.364C, S52.365A, S52.365B, S52.365C, S52.366A, S52.366B, S52.366C, S52.371A, S52.371B, S52.371C, S52.372A, S52.372B, S52.372C, S52.379A, S52.379B, S52.379C, S52.381A, S52.381B, S52.381C, S52.382A, S52.382B, S52.382C, S52.389A, S52.389B, S52.389C, S52.391A, S52.391B, S52.391C, S52.392A, S52.392B, S52.392C, S52.399A, S52.399B, S52.399C, S52.501A, S52.501B, S52.501C, S52.502A, S52.502B, S52.502C, S52.509A, S52.509B, S52.509C, S52.511A, S52.511B, S52.511C, S52.512A, S52.512B, S52.512C, S52.513A, S52.513B, S52.513C, S52.514A, S52.514B, S52.514C, S52.515A, S52.515B, S52.515C, S52.516A, S52.516B, S52.516C, S52.521A, S52.522A, S52.529A, S52.531A, S52.531B, S52.531C, S52.532A, S52.532B, S52.532C, S52.539A, S52.539B, S52.539C, S52.541A,



S62.396A, S62.396B, S62.397A, S62.397B, S62.398A, S62.398B, S62.399A, S62.399B, S62.90XA, S62.90XB, S62.91XA, S62.91XB, S62.92XA, S62.92XB, S72.001A, S72.001B, S72.001C, S72.002A, S72.002B, S72.002C, S72.009A, S72.009B, S72.009C, S72.011A, S72.011B, S72.011C, S72.012A, S72.012B, S72.012C, S72.019A, S72.019B, S72.019C, S72.021A, S72.021B, S72.021C, S72.022A, S72.022B, S72.022C, S72.023A, S72.023B, S72.023C, S72.024A, S72.024B, S72.024C, S72.025A, S72.025B, S72.025C, S72.026A, S72.026B, S72.026C, S72.031A, S72.031B, S72.031C, S72.032A, S72.032B, S72.032C, S72.033A, S72.033B, S72.033C, S72.034A, S72.034B, S72.034C, S72.035A, S72.035B, S72.035C, S72.036A, S72.036B, S72.036C, S72.041A, S72.041B, S72.041C, S72.042A, S72.042B, S72.042C, S72.043A, S72.043B, S72.043C, S72.044A, S72.044B, S72.044C, S72.045A, S72.045B, S72.045C, S72.046A, S72.046B, S72.046C, S72.051A, S72.051B, S72.051C, S72.052A, S72.052B, S72.052C, S72.059A, S72.059B, S72.059C, S72.061A, S72.061B, S72.061C, S72.062A, S72.062B, S72.062C, S72.063A, S72.063B, S72.063C, S72.064A, S72.064B, S72.064C, S72.065A, S72.065B, S72.065C, S72.066A, S72.066B, S72.066C, S72.091A, S72.091B, S72.091C, S72.092A, S72.092B, S72.092C, S72.099A, S72.099B, S72.099C, S72.101A, S72.101B, S72.101C, S72.102A, S72.102B, S72.102C, S72.109A, S72.109B, S72.109C, S72.111A, S72.111B, S72.111C, S72.112A, S72.112B, S72.112C, S72.113A, S72.113B, S72.113C, S72.114A, S72.114B, S72.114C, S72.115A, S72.115B, S72.115C, S72.116A, S72.116B, S72.116C, S72.121A, S72.121B, S72.121C, S72.122A, S72.122B, S72.122C, S72.123A, S72.123B, S72.123C, S72.124A, S72.124B, S72.124C, S72.125A, S72.125B, S72.125C, S72.126A, S72.126B, S72.126C, S72.131A, S72.131B, S72.131C, S72.132A, S72.132B, S72.132C, S72.133A, S72.133B, S72.133C, S72.134A, S72.134B, S72.134C, S72.135A, S72.135B, S72.135C, S72.136A, S72.136B, S72.136C, S72.141A, S72.141B, S72.141C, S72.142A, S72.142B, S72.142C, S72.143A, S72.143B, S72.143C, S72.144A, S72.144B, S72.144C, S72.145A, S72.145B, S72.145C, S72.146A, S72.146B, S72.146C, S72.21XA, S72.21XB, S72.21XC, S72.22XA, S72.22XB, S72.22XC, S72.23XA, S72.23XB, S72.23XC, S72.24XA, S72.24XB, S72.24XC, S72.25XA, S72.25XB, S72.25XC, S72.26XA, S72.26XB, S72.26XC, S72.301A, S72.301B, S72.301C, S72.302A, S72.302B, S72.302C, S72.309A, S72.309B, S72.309C, S72.321A, S72.321B, S72.321C, S72.322A, S72.322B, S72.322C, S72.323A, S72.323B, S72.323C, S72.324A, S72.324B, S72.324C, S72.325A, S72.325B, S72.325C, S72.326A, S72.326B, S72.326C, S72.331A, S72.331B, S72.331C, S72.332A, S72.332B, S72.332C, S72.333A, S72.333B, S72.333C, S72.334A, S72.334B, S72.334C, S72.335A, S72.335B, S72.335C, S72.336A, S72.336B, S72.336C, S72.341A, S72.341B, S72.341C, S72.342A, S72.342B, S72.342C, S72.343A, S72.343B, S72.343C, S72.344A, S72.344B, S72.344C, S72.345A, S72.345B, S72.345C, S72.346A, S72.346B, S72.346C, S72.351A, S72.351B, S72.351C, S72.352A, S72.352B, S72.352C, S72.353A, S72.353B, S72.353C, S72.354A, S72.354B, S72.354C, S72.355A, S72.355B, S72.355C, S72.356A, S72.356B, S72.356C, S72.361A, S72.361B, S72.361C, S72.362A, S72.362B, S72.362C, S72.363A, S72.363B, S72.363C, S72.364A, S72.364B, S72.364C, S72.365A, S72.365B, S72.365C, S72.366A, S72.366B, S72.366C, S72.391A, S72.391B, S72.391C, S72.392A, S72.392B, S72.392C, S72.399A, S72.399B, S72.399C, S72.401A, S72.401B, S72.401C, S72.402A, S72.402B, S72.402C, S72.409A, S72.409B, S72.409C, S72.411A, S72.411B, S72.411C, S72.412A, S72.412B, S72.412C, S72.413A, S72.413B, S72.413C, S72.414A, S72.414B, S72.414C, S72.415A, S72.415B, S72.415C, S72.416A, S72.416B, S72.416C, S72.421A, S72.421B, S72.421C, S72.422A, S72.422B, S72.422C, S72.423A, S72.423B, S72.423C, S72.424A, S72.424B, S72.424C, S72.425A, S72.425B, S72.425C, S72.426A, S72.426B, S72.426C, S72.431A, S72.431B, S72.431C, S72.432A, S72.432B, S72.432C, S72.433A, S72.433B, S72.433C, S72.434A, S72.434B, S72.434C, S72.435A, S72.435B, S72.435C, S72.436A, S72.436B, S72.436C, S72.441A, S72.441B, S72.441C, S72.442A, S72.442B, S72.442C, S72.443A, S72.443B, S72.443C, S72.444A, S72.444B, S72.444C, S72.445A, S72.445B, S72.445C, S72.446A, S72.446B, S72.446C, S72.451A, S72.451B, S72.451C, S72.452A, S72.452B, S72.452C, S72.453A, S72.453B, S72.453C, S72.454A, S72.454B, S72.454C, S72.455A, S72.455B, S72.455C, S72.456A, S72.456B, S72.456C, S72.461A, S72.461B, S72.461C, S72.462A, S72.462B, S72.462C, S72.463A, S72.463B, S72.463C, S72.464A, S72.464B, S72.464C, S72.465A, S72.465B, S72.465C, S72.466A, S72.466B, S72.466C, S72.471A, S72.472A, S72.479A, S72.491A, S72.491B, S72.491C, S72.492A, S72.492B, S72.492C, S72.499A, S72.499B, S72.499C, S72.8X1A, S72.8X1B, S72.8X1C, S72.8X2A, S72.8X2B, S72.8X2C, S72.8X9A, S72.8X9B, S72.8X9C, S72.90XA, S72.90XB,

S72.90XC, S72.91XA, S72.91XB, S72.91XC, S72.92XA, S72.92XB, S72.92XC, S79.001A, S79.002A, S79.009A, S79.011A, S79.012A, S79.019A, S79.091A, S79.092A, S79.099A, S79.101A, S79.102A, S79.109A, S79.111A, S79.112A, S79.119A, S79.121A, S79.122A, S79.129A, S79.131A, S79.132A, S79.139A, S79.141A, S79.142A, S79.149A, S79.191A, S79.192A, S79.199A, S82.001A, S82.001B, S82.001C, S82.002A, S82.002B, S82.002C, S82.009A, S82.009B, S82.009C, S82.011A, S82.011B, S82.011C, S82.012A, S82.012B, S82.012C, S82.013A, S82.013B, S82.013C, S82.014A, S82.014B, S82.014C, S82.015A, S82.015B, S82.015C, S82.016A, S82.016B, S82.016C, S82.021A, S82.021B, S82.021C, S82.022A, S82.022B, S82.022C, S82.023A, S82.023B, S82.023C, S82.024A, S82.024B, S82.024C, S82.025A, S82.025B, S82.025C, S82.026A, S82.026B, S82.026C, S82.031A, S82.031B, S82.031C, S82.032A, S82.032B, S82.032C, S82.033A, S82.033B, S82.033C, S82.034A, S82.034B, S82.034C, S82.035A, S82.035B, S82.035C, S82.036A, S82.036B, S82.036C, S82.041A, S82.041B, S82.041C, S82.042A, S82.042B, S82.042C, S82.043A, S82.043B, S82.043C, S82.044A, S82.044B, S82.044C, S82.045A, S82.045B, S82.045C, S82.046A, S82.046B, S82.046C, S82.091A, S82.091B, S82.091C, S82.092A, S82.092B, S82.092C, S82.099A, S82.099B, S82.099C, S82.101A, S82.101B, S82.101C, S82.102A, S82.102B, S82.102C, S82.109A, S82.109B, S82.109C, S82.111A, S82.111B, S82.111C, S82.112A, S82.112B, S82.112C, S82.113A, S82.113B, S82.113C, S82.114A, S82.114B, S82.114C, S82.115A, S82.115B, S82.115C, S82.116A, S82.116B, S82.116C, S82.121A, S82.121B, S82.121C, S82.122A, S82.122B, S82.122C, S82.123A, S82.123B, S82.123C, S82.124A, S82.124B, S82.124C, S82.125A, S82.125B, S82.125C, S82.126A, S82.126B, S82.126C, S82.131A, S82.131B, S82.131C, S82.132A, S82.132B, S82.132C, S82.133A, S82.133B, S82.133C, S82.134A, S82.134B, S82.134C, S82.135A, S82.135B, S82.135C, S82.136A, S82.136B, S82.136C, S82.141A, S82.141B, S82.141C, S82.142A, S82.142B, S82.142C, S82.143A, S82.143B, S82.143C, S82.144A, S82.144B, S82.144C, S82.145A, S82.145B, S82.145C, S82.146A, S82.146B, S82.146C, S82.151A, S82.151B, S82.151C, S82.152A, S82.152B, S82.152C, S82.153A, S82.153B, S82.153C, S82.154A, S82.154B, S82.154C, S82.155A, S82.155B, S82.155C, S82.156A, S82.156B, S82.156C, S82.161A, S82.162A, S82.169A, S82.191A, S82.191B, S82.191C, S82.192A, S82.192B, S82.192C, S82.199A, S82.199B, S82.199C, S82.201A, S82.201B, S82.201C, S82.202A, S82.202B, S82.202C, S82.209A, S82.209B, S82.209C, S82.221A, S82.221B, S82.221C, S82.222A, S82.222B, S82.222C, S82.223A, S82.223B, S82.223C, S82.224A, S82.224B, S82.224C, S82.225A, S82.225B, S82.225C, S82.226A, S82.226B, S82.226C, S82.231A, S82.231B, S82.231C, S82.232A, S82.232B, S82.232C, S82.233A, S82.233B, S82.233C, S82.234A, S82.234B, S82.234C, S82.235A, S82.235B, S82.235C, S82.236A, S82.236B, S82.236C, S82.241A, S82.241B, S82.241C, S82.242A, S82.242B, S82.242C, S82.243A, S82.243B, S82.243C, S82.244A, S82.244B, S82.244C, S82.245A, S82.245B, S82.245C, S82.246A, S82.246B, S82.246C, S82.251A, S82.251B, S82.251C, S82.252A, S82.252B, S82.252C, S82.253A, S82.253B, S82.253C, S82.254A, S82.254B, S82.254C, S82.255A, S82.255B, S82.255C, S82.256A, S82.256B, S82.256C, S82.261A, S82.261B, S82.261C, S82.262A, S82.262B, S82.262C, S82.263A, S82.263B, S82.263C, S82.264A, S82.264B, S82.264C, S82.265A, S82.265B, S82.265C, S82.266A, S82.266B, S82.266C, S82.291A, S82.291B, S82.291C, S82.292A, S82.292B, S82.292C, S82.299A, S82.299B, S82.299C, S82.301A, S82.301B, S82.301C, S82.302A, S82.302B, S82.302C, S82.309A, S82.309B, S82.309C, S82.311A, S82.312A, S82.319A, S82.391A, S82.391B, S82.391C, S82.392A, S82.392B, S82.392C, S82.399A, S82.399B, S82.399C, S82.401A, S82.401B, S82.401C, S82.402A, S82.402B, S82.402C, S82.409A, S82.409B, S82.409C, S82.421A, S82.421B, S82.421C, S82.422A, S82.422B, S82.422C, S82.423A, S82.423B, S82.423C, S82.424A, S82.424B, S82.424C, S82.425A, S82.425B, S82.425C, S82.426A, S82.426B, S82.426C, S82.431A, S82.431B, S82.431C, S82.432A, S82.432B, S82.432C, S82.433A, S82.433B, S82.433C, S82.434A, S82.434B, S82.434C, S82.435A, S82.435B, S82.435C, S82.436A, S82.436B, S82.436C, S82.441A, S82.441B, S82.441C, S82.442A, S82.442B, S82.442C, S82.443A, S82.443B, S82.443C, S82.444A, S82.444B, S82.444C, S82.445A, S82.445B, S82.445C, S82.446A, S82.446B, S82.446C, S82.451A, S82.451B, S82.451C, S82.452A, S82.452B, S82.452C, S82.453A, S82.453B, S82.453C, S82.454A, S82.454B, S82.454C, S82.455A, S82.455B, S82.455C, S82.456A, S82.456B, S82.456C, S82.461A, S82.461B, S82.461C, S82.462A, S82.462B, S82.462C, S82.463A, S82.463B, S82.463C, S82.464A, S82.464B, S82.464C, S82.465A, S82.465B, S82.465C, S82.466A, S82.466B, S82.466C, S82.491A, S82.491B, S82.491C, S82.492A, S82.492B, S82.492C, S82.499A,





S99.011A, S99.011B, S99.012A, S99.012B, S99.019A, S99.019B, S99.021A, S99.021B, S99.022A, S99.022B, S99.029A, S99.029B, S99.031A, S99.031B, S99.032A, S99.032B, S99.039A, S99.039B, S99.041A, S99.041B, S99.042A, S99.042B, S99.049A, S99.049B, S99.091A, S99.091B, S99.092A, S99.092B, S99.099A, S99.099B, S99.101A, S99.101B, S99.102A, S99.102B, S99.109A, S99.109B, S99.111A, S99.111B, S99.112A, S99.112B, S99.119A, S99.119B, S99.121A, S99.121B, S99.122A, S99.122B, S99.129A, S99.129B, S99.131A, S99.131B, S99.132A, S99.132B, S99.139A, S99.139B, S99.141A, S99.141B, S99.142A, S99.142B, S99.149A, S99.149B, S99.191A, S99.191B, S99.192A, S99.192B, S99.199A, S99.199B

**AND**

**Patient encounter during the performance period (CPT or HCPCS):** 99201, 99202, 99203, 99204, 99205, 99212, 99213, 99214, 99215, G0402

**OR**

**Option 2 - Denominator Criteria (Eligible Cases):**

Patients aged 50-85 years on date of encounter

**AND**

**Diagnosis for any fracture except fractures of the finger, toe, face or skull (ICD-10-CM):** M48.40XA, M48.41XA, M48.42XA, M48.43XA, M48.44XA, M48.45XA, M48.46XA, M48.47XA, M48.48XA, M80.00XA, M80.011A, M80.012A, M80.019A, M80.021A, M80.022A, M80.029A, M80.031A, M80.032A, M80.039A, M80.041A, M80.042A, M80.049A, M80.051A, M80.052A, M80.059A, M80.061A, M80.062A, M80.069A, M80.071A, M80.072A, M80.079A, M80.08XA, M80.80XA, M80.811A, M80.812A, M80.819A, M80.821A, M80.822A, M80.829A, M80.831A, M80.832A, M80.839A, M80.841A, M80.842A, M80.849A, M80.851A, M80.852A, M80.859A, M80.861A, M80.862A, M80.869A, M80.871A, M80.872A, M80.879A, M80.88XA, M84.311A, M84.312A, M84.319A, M84.321A, M84.322A, M84.329A, M84.331A, M84.332A, M84.333A, M84.334A, M84.339A, M84.341A, M84.342A, M84.343A, M84.350A, M84.351A, M84.352A, M84.353A, M84.359A, M84.361A, M84.362A, M84.363A, M84.364A, M84.369A, M84.371A, M84.372A, M84.373A, M84.374A, M84.375A, M84.376A, M84.38XA, M84.750A, M84.751A, M84.752A, M84.753A, M84.754A, M84.755A, M84.756A, M84.757A, M84.759A, M97.01XA, M97.02XA, M97.11XA, M97.12XA, M97.21XA, M97.22XA, M97.31XA, M97.32XA, M97.41XA, M97.42XA, S12.000A, S12.000B, S12.001A, S12.001B, S12.01XA, S12.01XB, S12.02XA, S12.02XB, S12.030A, S12.030B, S12.031A, S12.031B, S12.040A, S12.040B, S12.041A, S12.041B, S12.090A, S12.090B, S12.091A, S12.091B, S12.100A, S12.100B, S12.101A, S12.101B, S12.110A, S12.110B, S12.111A, S12.111B, S12.112A, S12.112B, S12.120A, S12.120B, S12.121A, S12.121B, S12.130A, S12.130B, S12.131A, S12.131B, S12.14XA, S12.14XB, S12.150A, S12.150B, S12.151A, S12.151B, S12.190A, S12.190B, S12.191A, S12.191B, S12.200A, S12.200B, S12.201A, S12.201B, S12.230A, S12.230B, S12.231A, S12.231B, S12.24XA, S12.24XB, S12.250A, S12.250B, S12.251A, S12.251B, S12.290A, S12.290B, S12.291A, S12.291B, S12.300A, S12.300B, S12.301A, S12.301B, S12.330A, S12.330B, S12.331A, S12.331B, S12.34XA, S12.34XB, S12.350A, S12.350B, S12.351A, S12.351B, S12.390A, S12.390B, S12.391A, S12.391B, S12.400A, S12.400B, S12.401A, S12.401B, S12.430A, S12.430B, S12.431A, S12.431B, S12.44XA, S12.44XB, S12.450A, S12.450B, S12.451A, S12.451B, S12.490A, S12.490B, S12.491A, S12.491B, S12.500A, S12.500B, S12.501A, S12.501B, S12.530A, S12.530B, S12.531A, S12.531B, S12.54XA, S12.54XB, S12.550A, S12.550B, S12.551A, S12.551B, S12.590A, S12.590B, S12.591A, S12.591B, S12.600A, S12.600B, S12.601A, S12.601B, S12.630A, S12.630B, S12.631A, S12.631B, S12.64XA, S12.64XB, S12.650A, S12.650B, S12.651A, S12.651B, S12.690A, S12.690B, S12.691A, S12.691B, S12.8XXA, S12.9XXA, S22.000A, S22.000B, S22.001A, S22.001B, S22.002A, S22.002B, S22.008A, S22.008B, S22.009A, S22.009B, S22.010A, S22.010B, S22.011A, S22.011B, S22.012A, S22.012B, S22.018A, S22.018B, S22.019A, S22.019B, S22.020A, S22.020B, S22.021A, S22.021B, S22.022A, S22.022B, S22.028A, S22.028B, S22.029A, S22.029B, S22.030A, S22.030B, S22.031A, S22.031B, S22.032A, S22.032B, S22.038A, S22.038B, S22.039A, S22.039B, S22.040A, S22.040B, S22.041A, S22.041B, S22.042A, S22.042B, S22.048A, S22.048B, S22.049A, S22.049B, S22.050A, S22.050B, S22.051A, S22.051B, S22.052A, S22.052B, S22.058A, S22.058B, S22.059A, S22.059B, S22.060A, S22.060B, S22.061A, S22.061B, S22.062A, S22.062B, S22.068A, S22.068B, S22.069A, S22.069B, S22.070A, S22.070B, S22.071A, S22.071B, S22.072A, S22.072B, S22.078A, S22.078B, S22.079A, S22.079B, S22.080A,









S72.352C, S72.353A, S72.353B, S72.353C, S72.354A, S72.354B, S72.354C, S72.355A, S72.355B, S72.355C, S72.356A, S72.356B, S72.356C, S72.361A, S72.361B, S72.361C, S72.362A, S72.362B, S72.362C, S72.363A, S72.363B, S72.363C, S72.364A, S72.364B, S72.364C, S72.365A, S72.365B, S72.365C, S72.366A, S72.366B, S72.366C, S72.391A, S72.391B, S72.391C, S72.392A, S72.392B, S72.392C, S72.399A, S72.399B, S72.399C, S72.401A, S72.401B, S72.401C, S72.402A, S72.402B, S72.402C, S72.409A, S72.409B, S72.409C, S72.411A, S72.411B, S72.411C, S72.412A, S72.412B, S72.412C, S72.413A, S72.413B, S72.413C, S72.414A, S72.414B, S72.414C, S72.415A, S72.415B, S72.415C, S72.416A, S72.416B, S72.416C, S72.421A, S72.421B, S72.421C, S72.422A, S72.422B, S72.422C, S72.423A, S72.423B, S72.423C, S72.424A, S72.424B, S72.424C, S72.425A, S72.425B, S72.425C, S72.426A, S72.426B, S72.426C, S72.431A, S72.431B, S72.431C, S72.432A, S72.432B, S72.432C, S72.433A, S72.433B, S72.433C, S72.434A, S72.434B, S72.434C, S72.435A, S72.435B, S72.435C, S72.436A, S72.436B, S72.436C, S72.441A, S72.441B, S72.441C, S72.442A, S72.442B, S72.442C, S72.443A, S72.443B, S72.443C, S72.444A, S72.444B, S72.444C, S72.445A, S72.445B, S72.445C, S72.446A, S72.446B, S72.446C, S72.451A, S72.451B, S72.451C, S72.452A, S72.452B, S72.452C, S72.453A, S72.453B, S72.453C, S72.454A, S72.454B, S72.454C, S72.455A, S72.455B, S72.455C, S72.456A, S72.456B, S72.456C, S72.461A, S72.461B, S72.461C, S72.462A, S72.462B, S72.462C, S72.463A, S72.463B, S72.463C, S72.464A, S72.464B, S72.464C, S72.465A, S72.465B, S72.465C, S72.466A, S72.466B, S72.466C, S72.471A, S72.472A, S72.479A, S72.491A, S72.491B, S72.491C, S72.492A, S72.492B, S72.492C, S72.499A, S72.499B, S72.499C, S72.8X1A, S72.8X1B, S72.8X1C, S72.8X2A, S72.8X2B, S72.8X2C, S72.8X9A, S72.8X9B, S72.8X9C, S72.90XA, S72.90XB, S72.90XC, S72.91XA, S72.91XB, S72.91XC, S72.92XA, S72.92XB, S72.92XC, S79.001A, S79.002A, S79.009A, S79.011A, S79.012A, S79.019A, S79.091A, S79.092A, S79.099A, S79.101A, S79.102A, S79.109A, S79.111A, S79.112A, S79.119A, S79.121A, S79.122A, S79.129A, S79.131A, S79.132A, S79.139A, S79.141A, S79.142A, S79.149A, S79.191A, S79.192A, S79.199A, S82.001A, S82.001B, S82.001C, S82.002A, S82.002B, S82.002C, S82.009A, S82.009B, S82.009C, S82.011A, S82.011B, S82.011C, S82.012A, S82.012B, S82.012C, S82.013A, S82.013B, S82.013C, S82.014A, S82.014B, S82.014C, S82.015A, S82.015B, S82.015C, S82.016A, S82.016B, S82.016C, S82.021A, S82.021B, S82.021C, S82.022A, S82.022B, S82.022C, S82.023A, S82.023B, S82.023C, S82.024A, S82.024B, S82.024C, S82.025A, S82.025B, S82.025C, S82.026A, S82.026B, S82.026C, S82.031A, S82.031B, S82.031C, S82.032A, S82.032B, S82.032C, S82.033A, S82.033B, S82.033C, S82.034A, S82.034B, S82.034C, S82.035A, S82.035B, S82.035C, S82.036A, S82.036B, S82.036C, S82.041A, S82.041B, S82.041C, S82.042A, S82.042B, S82.042C, S82.043A, S82.043B, S82.043C, S82.044A, S82.044B, S82.044C, S82.045A, S82.045B, S82.045C, S82.046A, S82.046B, S82.046C, S82.091A, S82.091B, S82.091C, S82.092A, S82.092B, S82.092C, S82.099A, S82.099B, S82.099C, S82.101A, S82.101B, S82.101C, S82.102A, S82.102B, S82.102C, S82.109A, S82.109B, S82.109C, S82.111A, S82.111B, S82.111C, S82.112A, S82.112B, S82.112C, S82.113A, S82.113B, S82.113C, S82.114A, S82.114B, S82.114C, S82.115A, S82.115B, S82.115C, S82.116A, S82.116B, S82.116C, S82.121A, S82.121B, S82.121C, S82.122A, S82.122B, S82.122C, S82.123A, S82.123B, S82.123C, S82.124A, S82.124B, S82.124C, S82.125A, S82.125B, S82.125C, S82.126A, S82.126B, S82.126C, S82.131A, S82.131B, S82.131C, S82.132A, S82.132B, S82.132C, S82.133A, S82.133B, S82.133C, S82.134A, S82.134B, S82.134C, S82.135A, S82.135B, S82.135C, S82.136A, S82.136B, S82.136C, S82.141A, S82.141B, S82.141C, S82.142A, S82.142B, S82.142C, S82.143A, S82.143B, S82.143C, S82.144A, S82.144B, S82.144C, S82.145A, S82.145B, S82.145C, S82.146A, S82.146B, S82.146C, S82.151A, S82.151B, S82.151C, S82.152A, S82.152B, S82.152C, S82.153A, S82.153B, S82.153C, S82.154A, S82.154B, S82.154C, S82.155A, S82.155B, S82.155C, S82.156A, S82.156B, S82.156C, S82.161A, S82.162A, S82.169A, S82.191A, S82.191B, S82.191C, S82.192A, S82.192B, S82.192C, S82.199A, S82.199B, S82.199C, S82.201A, S82.201B, S82.201C, S82.202A, S82.202B, S82.202C, S82.209A, S82.209B, S82.209C, S82.221A, S82.221B, S82.221C, S82.222A, S82.222B, S82.222C, S82.223A, S82.223B, S82.223C, S82.224A, S82.224B, S82.224C, S82.225A, S82.225B, S82.225C, S82.226A, S82.226B, S82.226C, S82.231A, S82.231B, S82.231C, S82.232A, S82.232B, S82.232C, S82.233A, S82.233B, S82.233C, S82.234A, S82.234B, S82.234C, S82.235A, S82.235B, S82.235C, S82.236A, S82.236B, S82.236C, S82.241A, S82.241B, S82.241C, S82.242A, S82.242B, S82.242C, S82.243A, S82.243B, S82.243C,

S82.244A, S82.244B, S82.244C, S82.245A, S82.245B, S82.245C, S82.246A, S82.246B, S82.246C,  
S82.251A, S82.251B, S82.251C, S82.252A, S82.252B, S82.252C, S82.253A, S82.253B, S82.253C,  
S82.254A, S82.254B, S82.254C, S82.255A, S82.255B, S82.255C, S82.256A, S82.256B, S82.256C, S82.261A,  
S82.261B, S82.261C, S82.262A, S82.262B, S82.262C, S82.263A, S82.263B, S82.263C, S82.264A,  
S82.264B, S82.264C, S82.265A, S82.265B, S82.265C, S82.266A, S82.266B, S82.266C, S82.291A,  
S82.291B, S82.291C, S82.292A, S82.292B, S82.292C, S82.299A, S82.299B, S82.299C, S82.301A,  
S82.301B, S82.301C, S82.302A, S82.302B, S82.302C, S82.309A, S82.309B, S82.309C, S82.311A,  
S82.312A, S82.319A, S82.391A, S82.391B, S82.391C, S82.392A, S82.392B, S82.392C, S82.399A,  
S82.399B, S82.399C, S82.401A, S82.401B, S82.401C, S82.402A, S82.402B, S82.402C, S82.409A,  
S82.409B, S82.409C, S82.421A, S82.421B, S82.421C, S82.422A, S82.422B, S82.422C, S82.423A,  
S82.423B, S82.423C, S82.424A, S82.424B, S82.424C, S82.425A, S82.425B, S82.425C, S82.426A,  
S82.426B, S82.426C, S82.431A, S82.431B, S82.431C, S82.432A, S82.432B, S82.432C, S82.433A,  
S82.433B, S82.433C, S82.434A, S82.434B, S82.434C, S82.435A, S82.435B, S82.435C, S82.436A,  
S82.436B, S82.436C, S82.441A, S82.441B, S82.441C, S82.442A, S82.442B, S82.442C, S82.443A,  
S82.443B, S82.443C, S82.444A, S82.444B, S82.444C, S82.445A, S82.445B, S82.445C, S82.446A,  
S82.446B, S82.446C, S82.451A, S82.451B, S82.451C, S82.452A, S82.452B, S82.452C, S82.453A,  
S82.453B, S82.453C, S82.454A, S82.454B, S82.454C, S82.455A, S82.455B, S82.455C, S82.456A,  
S82.456B, S82.456C, S82.461A, S82.461B, S82.461C, S82.462A, S82.462B, S82.462C, S82.463A,  
S82.463B, S82.463C, S82.464A, S82.464B, S82.464C, S82.465A, S82.465B, S82.465C, S82.466A,  
S82.466B, S82.466C, S82.491A, S82.491B, S82.491C, S82.492A, S82.492B, S82.492C, S82.499A,  
S82.499B, S82.499C, S82.51XA, S82.51XB, S82.51XC, S82.52XA, S82.52XB, S82.52XC, S82.53XA,  
S82.53XB, S82.53XC, S82.54XA, S82.54XB, S82.54XC, S82.55XA, S82.55XB, S82.55XC, S82.56XA,  
S82.56XB, S82.56XC, S82.61XA, S82.61XB, S82.61XC, S82.62XA, S82.62XB, S82.62XC, S82.63XA,  
S82.63XB, S82.63XC, S82.64XA, S82.64XB, S82.64XC, S82.65XA, S82.65XB, S82.65XC, S82.66XA,  
S82.66XB, S82.66XC, S82.811A, S82.812A, S82.819A, S82.821A, S82.822A, S82.829A, S82.831A,  
S82.831B, S82.831C, S82.832A, S82.832B, S82.832C, S82.839A, S82.839B, S82.839C, S82.841A,  
S82.841B, S82.841C, S82.842A, S82.842B, S82.842C, S82.843A, S82.843B, S82.843C, S82.844A,  
S82.844B, S82.844C, S82.845A, S82.845B, S82.845C, S82.846A, S82.846B, S82.846C, S82.851A,  
S82.851B, S82.851C, S82.852A, S82.852B, S82.852C, S82.853A, S82.853B, S82.853C, S82.854A,  
S82.854B, S82.854C, S82.855A, S82.855B, S82.855C, S82.856A, S82.856B, S82.856C, S82.861A,  
S82.861B, S82.861C, S82.862A, S82.862B, S82.862C, S82.863A, S82.863B, S82.863C, S82.864A,  
S82.864B, S82.864C, S82.865A, S82.865B, S82.865C, S82.866A, S82.866B, S82.866C, S82.871A,  
S82.871B, S82.871C, S82.872A, S82.872B, S82.872C, S82.873A, S82.873B, S82.873C, S82.874A,  
S82.874B, S82.874C, S82.875A, S82.875B, S82.875C, S82.876A, S82.876B, S82.876C, S82.891A,  
S82.891B, S82.891C, S82.892A, S82.892B, S82.892C, S82.899A, S82.899B, S82.899C, S82.90XA,  
S82.90XB, S82.90XC, S82.91XA, S82.91XB, S82.91XC, S82.92XA, S82.92XB, S82.92XC, S89.001A,  
S89.002A, S89.009A, S89.011A, S89.012A, S89.019A, S89.021A, S89.022A, S89.029A, S89.031A, S89.032A,  
S89.039A, S89.041A, S89.042A, S89.049A, S89.091A, S89.092A, S89.099A, S89.101A, S89.102A, S89.109A,  
S89.111A, S89.112A, S89.119A, S89.121A, S89.122A, S89.129A, S89.131A, S89.132A, S89.139A, S89.141A,  
S89.142A, S89.149A, S89.191A, S89.192A, S89.199A, S89.201A, S89.202A, S89.209A, S89.211A, S89.212A,  
S89.219A, S89.221A, S89.222A, S89.229A, S89.291A, S89.292A, S89.299A, S89.301A, S89.302A, S89.309A,  
S89.311A, S89.312A, S89.319A, S89.321A, S89.322A, S89.329A, S89.391A, S89.392A, S89.399A, S92.001A,  
S92.001B, S92.002A, S92.002B, S92.009A, S92.009B, S92.011A, S92.011B, S92.012A, S92.012B, S92.013A,  
S92.013B, S92.014A, S92.014B, S92.015A, S92.015B, S92.016A, S92.016B, S92.021A, S92.021B, S92.022A,  
S92.022B, S92.023A, S92.023B, S92.024A, S92.024B, S92.025A, S92.025B, S92.026A, S92.026B, S92.031A,  
S92.031B, S92.032A, S92.032B, S92.033A, S92.033B, S92.034A, S92.034B, S92.035A, S92.035B, S92.036A,  
S92.036B, S92.041A, S92.041B, S92.042A, S92.042B, S92.043A, S92.043B, S92.044A, S92.044B, S92.045A,  
S92.045B, S92.046A, S92.046B, S92.051A, S92.051B, S92.052A, S92.052B, S92.053A, S92.053B, S92.054A,  
S92.054B, S92.055A, S92.055B, S92.056A, S92.056B, S92.061A, S92.061B, S92.062A, S92.062B, S92.063A,  
S92.063B, S92.064A, S92.064B, S92.065A, S92.065B, S92.066A, S92.066B, S92.101A, S92.101B, S92.102A,  
S92.102B, S92.109A, S92.109B, S92.111A, S92.111B, S92.112A, S92.112B, S92.113A, S92.113B, S92.114A,  
S92.114B, S92.115A, S92.115B, S92.116A, S92.116B, S92.121A, S92.121B, S92.122A, S92.122B, S92.123A,

S92.123B, S92.124A, S92.124B, S92.125A, S92.125B, S92.126A, S92.126B, S92.131A, S92.131B, S92.132A, S92.132B, S92.133A, S92.133B, S92.134A, S92.134B, S92.135A, S92.135B, S92.136A, S92.136B, S92.141A, S92.141B, S92.142A, S92.142B, S92.143A, S92.143B, S92.144A, S92.144B, S92.145A, S92.145B, S92.146A, S92.146B, S92.151A, S92.151B, S92.152A, S92.152B, S92.153A, S92.153B, S92.154A, S92.154B, S92.155A, S92.155B, S92.156A, S92.156B, S92.191A, S92.191B, S92.192A, S92.192B, S92.199A, S92.199B, S92.201A, S92.201B, S92.202A, S92.202B, S92.209A, S92.209B, S92.211A, S92.211B, S92.212A, S92.212B, S92.213A, S92.213B, S92.214A, S92.214B, S92.215A, S92.215B, S92.216A, S92.216B, S92.221A, S92.221B, S92.222A, S92.222B, S92.223A, S92.223B, S92.224A, S92.224B, S92.225A, S92.225B, S92.226A, S92.226B, S92.231A, S92.231B, S92.232A, S92.232B, S92.233A, S92.233B, S92.234A, S92.234B, S92.235A, S92.235B, S92.236A, S92.236B, S92.241A, S92.241B, S92.242A, S92.242B, S92.243A, S92.243B, S92.244A, S92.244B, S92.245A, S92.245B, S92.246A, S92.246B, S92.251A, S92.251B, S92.252A, S92.252B, S92.253A, S92.253B, S92.254A, S92.254B, S92.255A, S92.255B, S92.256A, S92.256B, S92.301A, S92.301B, S92.302A, S92.302B, S92.309A, S92.309B, S92.311A, S92.311B, S92.312A, S92.312B, S92.313A, S92.313B, S92.314A, S92.314B, S92.315A, S92.315B, S92.316A, S92.316B, S92.321A, S92.321B, S92.322A, S92.322B, S92.323A, S92.323B, S92.324A, S92.324B, S92.325A, S92.325B, S92.326A, S92.326B, S92.331A, S92.331B, S92.332A, S92.332B, S92.333A, S92.333B, S92.334A, S92.334B, S92.335A, S92.335B, S92.336A, S92.336B, S92.341A, S92.341B, S92.342A, S92.342B, S92.343A, S92.343B, S92.344A, S92.344B, S92.345A, S92.345B, S92.346A, S92.346B, S92.351A, S92.351B, S92.352A, S92.352B, S92.353A, S92.353B, S92.354A, S92.354B, S92.355A, S92.355B, S92.356A, S92.356B, S92.811A, S92.811B, S92.812A, S92.812B, S92.819A, S92.819B, S92.901A, S92.901B, S92.902A, S92.902B, S92.909A, S92.909B, S99.001A, S99.001B, S99.002A, S99.002B, S99.009A, S99.009B, S99.011A, S99.011B, S99.012A, S99.012B, S99.019A, S99.019B, S99.021A, S99.021B, S99.022A, S99.022B, S99.029A, S99.029B, S99.031A, S99.031B, S99.032A, S99.032B, S99.039A, S99.039B, S99.041A, S99.041B, S99.042A, S99.042B, S99.049A, S99.049B, S99.091A, S99.091B, S99.092A, S99.092B, S99.099A, S99.099B, S99.101A, S99.101B, S99.102A, S99.102B, S99.109A, S99.109B, S99.111A, S99.111B, S99.112A, S99.112B, S99.119A, S99.119B, S99.121A, S99.121B, S99.122A, S99.122B, S99.129A, S99.129B, S99.131A, S99.131B, S99.132A, S99.132B, S99.139A, S99.139B, S99.141A, S99.141B, S99.142A, S99.142B, S99.149A, S99.149B, S99.191A, S99.191B, S99.192A, S99.192B, S99.199A, S99.199B

**AND**

**Patient procedure during the performance period (CPT):** 22310, 22315, 22318, 22319, 22325, 22326, 22327, 22510, 22511, 22513, 22514, 25600, 25605, 25606, 25607, 25608, 25609, 27230, 27232, 27235, 27236, 27238, 27240, 27244, 27245, 27246, 27248

**NUMERATOR:**

Patients who received either a bone mineral density test or a prescription for a drug to treat osteoporosis in the six months after the fracture

**Definitions:**

**Pharmacologic Therapy** – U.S. Food and Drug Administration approved pharmacologic options for osteoporosis prevention and/or treatment of postmenopausal osteoporosis include, in alphabetical order: bisphosphonates (alendronate, alendronate-cholecalciferol, ibandronate, risedronate, zoledronic acid, calcitonin, teriparatide, denosumab, and raloxifine.

**Prescribed** – May include prescription given to the patient for treatment of osteoporosis (as listed above) at one or more encounters during the performance period, or documentation that patient is already taking pharmacologic therapy for osteoporosis, as documented in the current medical list.

**Bone Mineral Density (BMD)** – A bone density test is an examination by either special x-rays or ultrasound to determine how much bone mineral content (calcium and other minerals) is present in any section of bone.

**NUMERATOR NOTE:** While the Central Dual Energy X-Ray Absorptiometry (DXA) is the most common measurement for measuring bone mineral density (BMD), for the purposes of submitting this measure, spinal densitometry X-ray, ultrasonography for densitometry, CT bone density axial and Peripheral Dual-energy X-Ray Absorptiometry (DXA) would meet performance and the intent of the measure and **3095F** would be submitted.



**Numerator Quality-Data Coding Options:**

**Patient receiving Hospice Services, Patient Not Eligible:**

**Denominator Exclusion: G9768:** Patients who utilize hospice services any time during the measurement period

**OR**

**Bone Mineral Density Measurement Results not Documented for Medical Reasons**

**Denominator Exclusion: G9769:** Patient had a bone mineral density test in the past two years OR received osteoporosis medication or therapy in the past 12 months

**OR**

**Patient age 65 or older in Institutional SNP or residing in long-term care facility, Patient Not Eligible**

**Denominator Exclusion: G9938** Exclude all encounters from the denominator for patients age 65 and older in Institutional Special Needs Plans (SNP) or residing in long term care with POS code 32, 33, 34, 54 or 56 anytime during the measurement period

**OR**

**Bone Mineral Density Measurement Ordered or Results Documented or Pharmacologic Therapy Prescribed**

**Performance Met: CPT II 3095F:** Central Dual-energy X-Ray Absorptiometry (DXA) results documented

**OR**

**Performance Met: G8633:** Pharmacologic therapy (other than minerals/vitamins) for osteoporosis prescribed

**OR**

**Bone Mineral Density Measurement Results not Documented, Reason not Otherwise Specified**

Append a submission modifier (8P) to CPT Category II code 3095F to submit circumstances when the action described in the numerator is not performed and the reason is not otherwise specified.

**Performance Not Met: 3095F with 8P:** Central Dual-energy X-Ray Absorptiometry (DXA) measurement was not performed, reason not otherwise specified

**OR**

**Pharmacologic Therapy not Prescribed, Reason not Given**

**Performance Not Met: G8635:** Pharmacologic therapy for osteoporosis was not prescribed, reason not given

**RATIONALE:**

The intent of this measure is secondary prevention of fractures through the appropriate diagnosis and treatment of osteoporosis. Detecting osteoporosis and initiating treatment will help to prevent future fractures from occurring.

Future fractures, especially in the older population, can cause significant health issues, decline in function, and, in some cases lead to mortality.

**CLINICAL RECOMMENDATION STATEMENTS:**

Appropriate follow-up care for a fracture in post-menopausal women includes either 1) bone mineral density testing to assess whether a patient has osteoporosis or 2) receiving pharmacologic therapy to treat osteoporosis. This measure is based on guidelines and evidence that patients at high risk of fracture, including patients with a history of fragility fractures, should be screened for osteoporosis (USPSTF 2012, Nelson 2010, AACE 2010) and that patients who have a fragility fracture of the hip or spine should be provided with a treatment for osteoporosis (AACE 2010, Crandall 2012).

“The USPSTF recommends screening for osteoporosis in women aged 65 years or older and in younger women whose fracture risk is equal to or greater than that of a 65-year-old white woman who has no additional risk factors.” (USPSTF 2011)

All postmenopausal women with a history of fracture without major trauma should receive a bone mineral density test to test for osteoporosis (AACE 2010). Patients who have a history of fracture of the hip or spine also need pharmacologic therapy to treat for osteoporosis. (AACE 2010; NOF 2014)

American Association of Clinical Endocrinologists (AACE). Medical Guidelines for Clinical Practice for the Diagnosis and Treatment of Postmenopausal Osteoporosis, 2010 Dec. Guideline available from [Link to Medical Guidelines for Clinical Practice for the Diagnosis and Treatment of Postmenopausal Osteoporosis](#), accessed April 25, 2014.

National Osteoporosis Foundation. Clinician's Guide to Prevention and Treatment of Osteoporosis. Washington, DC: National Osteoporosis Foundation; 2014. Accessed at: [Link to Clinician's Guide to Prevention and Treatment of Osteoporosis](#)

Preventive Services Task Force (USPSTF). Recommendations and Rationale: Screening for Osteoporosis in Postmenopausal Women. January 2011. Accessed at: [Link to Recommendations and Rationale: Screening for Osteoporosis in Postmenopausal Women](#)

**COPYRIGHT:**

This Physician Performance Measure (Measure) and related data specifications have been developed by the PCPI(R) Foundation (PCPI[R]) and the National Committee for Quality Assurance (NCQA). This Measure is not a clinical guideline and does not establish a standard of medical care, and has not been tested for all potential applications. The Measure, while copyrighted, can be reproduced and distributed, without modification, for noncommercial purposes, eg, use by health care providers in connection with their practices. Commercial use is defined as the sale, license, or distribution of the Measure for commercial gain, or incorporation of the Measure into a product or service that is sold, licensed or distributed for commercial gain. Commercial uses of the Measure require a license agreement between the user and the PCPI(R) or NCQA. Neither the American Medical Association (AMA), nor the former AMA-convened Physician Consortium for Performance Improvement(R), PCPI, NCQA nor its members shall be responsible for any use of the Measure. (C) 2018 National Committee for Quality Assurance and PCPI (R) Foundation. All Rights Reserved.

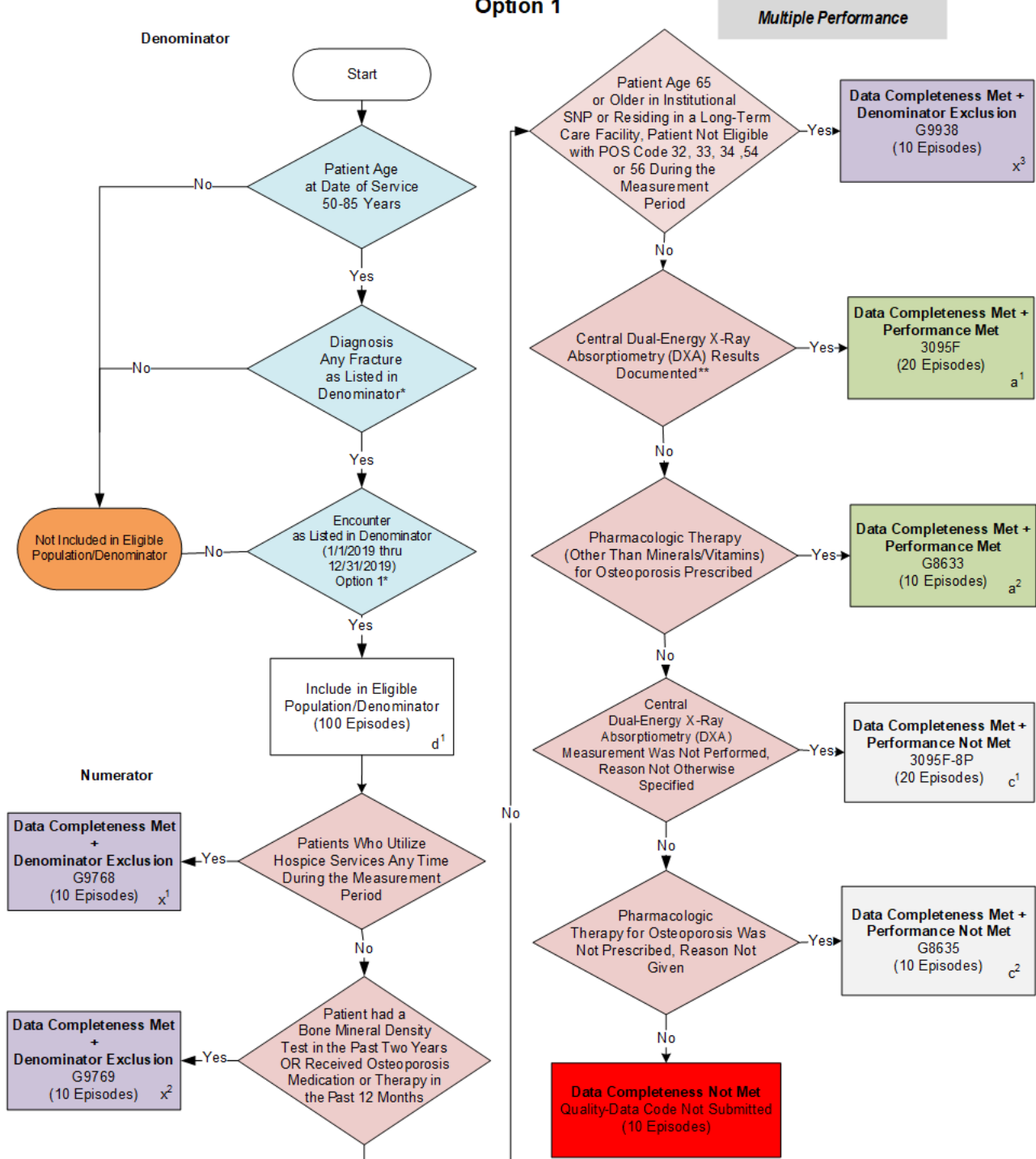
Limited proprietary coding is contained in the Measure specifications for user convenience. Users of proprietary code sets should obtain all necessary licenses from the owners of the code sets. NCQA disclaims all liability for use or accuracy of any CPT or other codes contained in the specifications.

CPT(R) contained in the Measure specifications is copyright 2004-2018 American Medical Association. LOINC(R) copyright 2004-2018 Regenstrief Institute, Inc. This material contains SNOMED Clinical Terms(R) (SNOMED CT[R]) copyright 2004-2018 International Health Terminology Standards Development Organisation. ICD-10 copyright 2018 World Health Organization. All Rights Reserved.

The performance Measure is not a clinical guideline and does not establish a standard of medical care, and has not been tested for all potential applications.

**THE MEASURE AND SPECIFICATIONS ARE PROVIDED "AS IS" WITHOUT WARRANTY OF ANY KIND**

**2019 Medicare Part B Claims Flow for Quality ID #418: NQF #0053:  
Osteoporosis Management in Women Who Had a Fracture  
Option 1**



\* See the posted Measure Specification for specific coding and instructions to submit this measure.

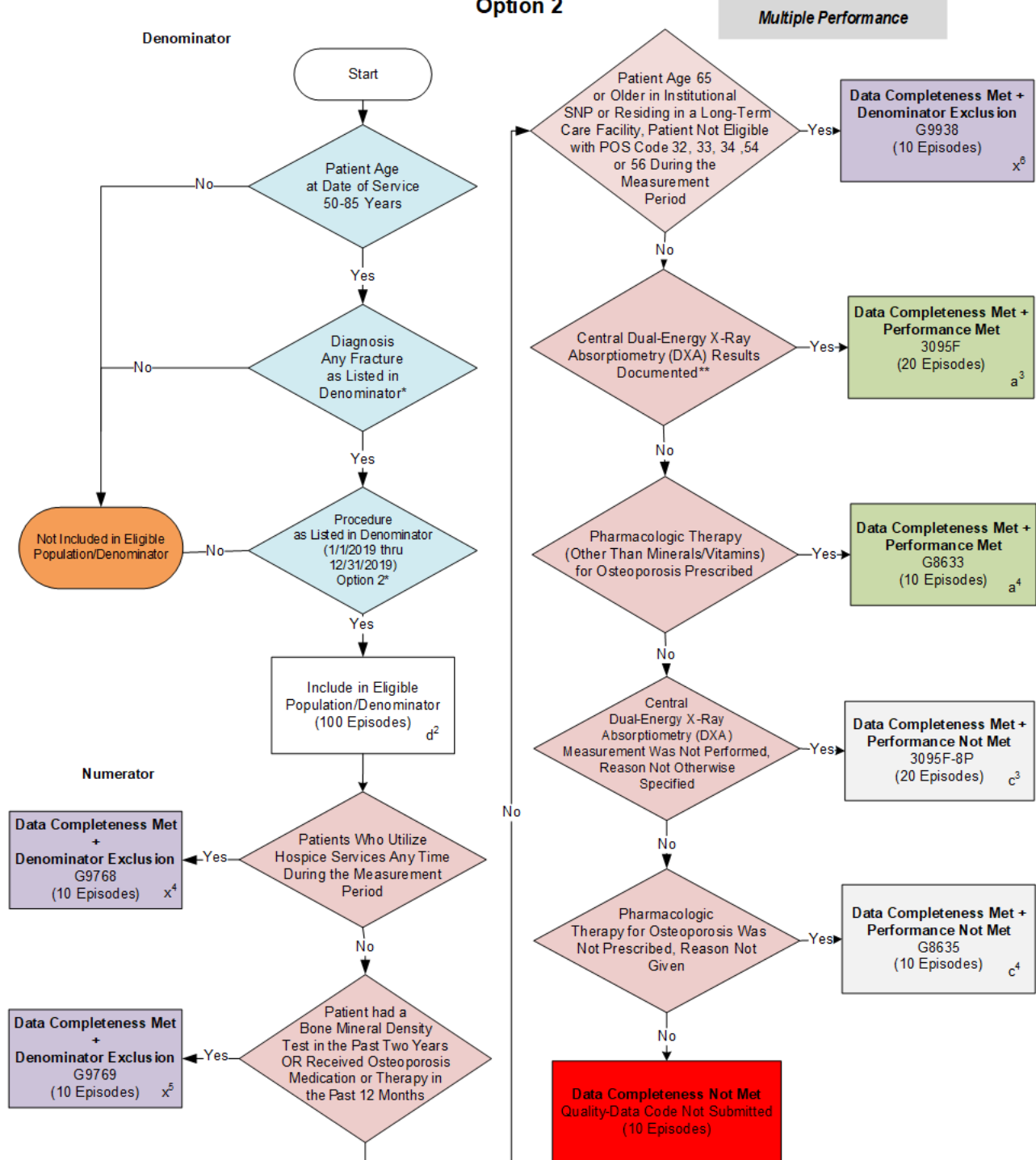
\*\*While the Central Dual Energy X-Ray Absorptiometry (DXA) is the most common measurement for measuring bone mineral density (BMD), for the purposes of submitting this measure, spinal densitometry X-ray, ultrasonography for densitometry, CT bone density axial and Peripheral Dual-energy X-Ray Absorptiometry (DXA) would meet performance and the intent of the measure and 3095F would be submitted.

This measure contains 2 Submission Criteria, although as the Sample Calculation indicates, there is **ONLY** one data completeness and one performance rate for this measure.

NOTE: Submission Frequency: Episode

CPT only copyright 2018 American Medical Association. All rights reserved.  
The measure diagrams were developed by CMS as a supplemental resource to be used in conjunction with the measure specifications. They should not be used alone or as a substitution for the measure specification.

## 2019 Medicare Part B Claims Flow for Quality ID #418: NQF #0053: Osteoporosis Management in Women Who Had a Fracture Option 2



\* See the posted Measure Specification for specific coding and instructions to submit this measure.

\*\*While the Central Dual Energy X-Ray Absorptiometry (DXA) is the most common measurement for measuring bone mineral density (BMD), for the purposes of submitting this measure, spinal densitometry X-ray, ultrasonography for densitometry, CT bone density axial and Peripheral Dual-energy X-Ray Absorptiometry (DXA) would meet performance and the intent of the measure and 3095F would be submitted.

This measure contains 2 Submission Criteria, although as the Sample Calculation indicates, there is **ONLY** one data completeness and one performance rate for this measure.

NOTE: Submission Frequency: Episode

CPT only copyright 2018 American Medical Association. All rights reserved.  
The measure diagrams were developed by CMS as a supplemental resource to be used in conjunction with the measure specifications. They should not be used alone or as a substitution for the measure specification. v3

## 2019 Medicare Part B Claims Flow for Quality ID #418: NQF #0053: Osteoporosis Management in Women Who Had a Fracture

### SAMPLE CALCULATIONS:

Data Completeness=

$$\frac{\text{Denominator Exclusion } (x^1+x^2+x^3+x^4+x^5+x^6=60 \text{ episodes}) + \text{Performance Met } (a^1+a^2+a^3+a^4= 60 \text{ episodes}) + \text{Performance Not Met } (c^1+c^2+c^3+c^4= 60 \text{ episodes})}{\text{Eligible Population / Denominator } (d^1+d^2= 200 \text{ episodes})} = \frac{180 \text{ episodes}}{200 \text{ episodes}} = 90.00\%$$

Performance Rate=

$$\frac{\text{Performance Met } (a^1+a^2+a^3+a^4= 60 \text{ episodes})}{\text{Data Completeness Numerator } (180 \text{ episodes}) - \text{Denominator Exclusion } (x^1+x^2+x^3+x^4+x^5=60 \text{ episodes})} = \frac{60 \text{ episodes}}{120 \text{ episodes}} = 50.00\%$$

\* See the posted Measure Specification for specific coding and instructions to submit this measure.

\*\*While the Central Dual Energy X-Ray Absorptiometry (DXA) is the most common measurement for measuring bone mineral density (BMD), for the purposes of submitting this measure, spinal densitometry X-ray, ultrasonography for densitometry, CT bone density axial and Peripheral Dual-energy X-Ray Absorptiometry (DXA) would meet performance and the intent of the measure and 3095F would be submitted.

This measure contains 2 Submission Criteria, although as the Sample Calculation indicates, there is **ONLY** one data completeness and one performance rate for this measure.

NOTE: Submission Frequency: Episode

CPT only copyright 2018 American Medical Association. All rights reserved.  
The measure diagrams were developed by CMS as a supplemental resource to be used in conjunction with the measure specifications. They should not be used alone or as a substitution for the measure specification.

v3

**2019 Medicare Part B Claims Flow Narrative for Quality ID #418 NQF #0053:  
Osteoporosis Management in Women Who Had a Fracture**

Please refer to the specific section of the specification to identify the denominator and numerator information for use in submitting this Individual Specification.

**Submission Criteria 1**

1. Start with Denominator
2. Check Patient Age:
  - a. If Patient Age is 50 to 85 Years on Date of Service equals No during the performance period, do not include in Eligible Population. Stop Processing.
  - b. If Patient Age is 50 to 85 Years on Date of Service equals Yes during the performance period, proceed to check Patient Diagnosis.
3. Check Patient Diagnosis:
  - a. If Diagnosis of Any Fracture as Listed in the Denominator equals No, do not include in Eligible Population. Stop Processing.
  - b. If Diagnosis of Any Fracture as Listed in the Denominator equals Yes, proceed to check Encounter Performed.
4. Check Encounter Performed:
  - a. If Encounter as Listed in the Denominator equals No, do not include in Eligible Population. Stop Processing.
  - b. If Encounter as Listed in the Denominator equals Yes, include in Eligible Population.
5. Denominator Population:
  - a. Denominator Population is all Eligible Episodes in the Denominator. Denominator is represented as Denominator in the Sample Calculation listed at the end of this document. Letter d<sup>1</sup> equals 100 episodes in the Sample Calculation.
6. Start Numerator
7. Check Patients Who Utilize Hospice Services Any Time During the Measurement Period:
  - a. If Patients Who Utilize Hospice Services Any Time During the Measurement Period equals Yes, include in Data Completeness Met and Denominator Exclusion.
  - b. Data Completeness Met and Denominator Exclusion letter is represented as Data Completeness and Performance Rate in the Sample Calculation listed at the end of this document. Letter x<sup>1</sup> equals 10 episodes in the Sample Calculation.
  - c. If Patients Who Utilize Hospice Services Any Time During the Measurement Period equals No, proceed to check Patient had a Bone Mineral Density Test in the Past Two Years OR Received Osteoporosis Medication or Therapy in the Past 12 Months.
8. Check Patient had a Bone Mineral Density Test in the Past Two Years OR Received Osteoporosis Medication or Therapy in the Past 12 Months:

- a. If Patient had a Bone Mineral Density Test in the Past Two Years OR Received Osteoporosis Medication or Therapy in the Past 12 Months equals Yes, include in Data Completeness Met and Denominator Exclusion.
  - b. Data Completeness Met and Denominator Exclusion letter is represented as Data Completeness and Performance Rate in the Sample Calculation listed at the end of this document. Letter x<sup>2</sup> equals 10 episodes in the Sample Calculation.
  - c. If Patient had a Bone Mineral Density Test in the Past Two Years OR Received Osteoporosis Medication or Therapy in the Past 12 Months equals No, proceed to check Patients Age 65 or Older in Institutional Special Needs Plans (SNP) or Residing in Long-Term Care with POS code 32, 33, 34, 54, or 56 any time during the measurement period.
9. Check Patients Age 65 or Older in Institutional Special Needs Plans (SNP) or Residing in Long-Term Care with POS code 32, 33, 34, 54, or 56 any time during the measurement period
- a. If Patient Age is 65 or Older in Institutional Special Needs Plans (SNP) or Residing in Long-Term Care with POS code 32, 33, 34, 54, or 56 any time during the measurement period Yes, include in Data Completeness Met and Denominator Exclusion.
  - b. Data Completeness Met and Denominator Exclusion letter is represented as Data Completeness and Performance Rate in the Sample Calculation listed at the end of this document. Letter x<sup>3</sup> equals 10 episodes in the Sample Calculation.
  - c. If Patient Age is 65 or Older in Institutional Special Needs Plans (SNP) or Residing in Long-Term Care with POS code 32, 33, 34, 54, or 56 any time during the measurement period equals No, proceed to check Central Dual-Energy X-Ray Absorptiometry (DXA) Results Documented\*\*.
10. Check Central Dual-Energy X-Ray Absorptiometry (DXA) Results Documented\*\*:
- a. If Central Dual-Energy X-Ray Absorptiometry (DXA) Results Documented\*\* equals Yes, include in Data Completeness Met and Performance Met.
  - b. Data Completeness Met and Performance Met letter is represented as Data Completeness and Performance Rate in the Sample Calculation listed at the end of this document. Letter a<sup>1</sup> equals 20 episodes in the Sample Calculation.
  - c. If Central Dual-Energy X-Ray Absorptiometry (DXA) Results Documented\*\* equals No, proceed to check Pharmacological Therapy (Other Than Minerals/Vitamins) for Osteoporosis Prescribed.
11. Check Pharmacological Therapy (Other Than Minerals/Vitamins) for Osteoporosis Prescribed:
- a. If Pharmacological Therapy (Other Than Minerals/Vitamins) for Osteoporosis Prescribed equals Yes, include in Data Completeness Met and Performance Met.
  - b. Data Completeness Met and Performance Met letter is represented as Data Completeness and Performance Rate in the Sample Calculation listed at the end of this document. Letter a<sup>2</sup> equals 10 episodes in the Sample Calculation.
  - c. If Pharmacological Therapy (Other Than Minerals/Vitamins) for Osteoporosis Prescribed equals No, proceed to check Central Dual-Energy X-Ray Absorptiometry (DXA) Measurement was Not Performed, Reason Not Otherwise Specified.
12. Check Central Dual-energy X-Ray Absorptiometry (DXA) Measurement Was Not Performed, Reason Not Otherwise Specified:

- a. If Central Dual-Energy X-Ray Absorptiometry (DXA) Measurement Was Not Performed, Reason Not Otherwise Specified equals Yes, include in Data Completeness Met and Performance Not Met.
  - b. Data Completeness Met and Performance Not Met letter is represented as Data Completeness in the Sample Calculation listed at the end of this document. Letter c<sup>1</sup> equals 20 episodes in the Sample Calculation.
  - c. If Central Dual-Energy X-Ray Absorptiometry (DXA) Measurement Was Not Performed, Reason Not Otherwise Specified equals No, proceed to check Pharmacologic Therapy for Osteoporosis was Not Prescribed, Reason Not Given.
13. Check Pharmacologic Therapy for Osteoporosis was Not Prescribed, Reason Not Given:
- a. If Pharmacologic Therapy for Osteoporosis was Not Prescribed, Reason Not Given equals Yes, include in Data Completeness Met and Performance Not Met.
  - b. Data Completeness Met and Performance Not Met letter is represented as Data Completeness in the Sample Calculation listed at the end of this document. Letter c<sup>2</sup> equals 10 episodes in the Sample Calculation.
  - c. If Pharmacologic Therapy for Osteoporosis was Not Prescribed, Reason Not Given equals No, proceed to check Data Completeness Not Met.
14. Check Data Completeness Not Met:
- a. If Data Completeness Not Met, the Quality Data Code was not submitted. 10 episodes have been subtracted from the Data Completeness Numerator in the Sample Calculation.



**2019 Medicare Part B Claims Flow Narrative for Quality ID #418 NQF #0053:  
Osteoporosis Management in Women Who Had a Fracture**

Please refer to the specific section of the specification to identify the denominator and numerator information for use in submitting this Individual Specification.

**Submission Criteria 2**

1. Start with Denominator
2. Check Patient Age:
  - a. If the Patient Age is 50 to 85 Years on Date of Service equals No during the measurement period, do not include in Eligible Population. Stop Processing.
  - b. If the Patient Age is 50 to 85 Years on Date of Service equals Yes during the measurement period, proceed to check Patient Diagnosis.
3. Check Patient Diagnosis:
  - a. If Diagnosis of Any Fracture as Listed in the Denominator equals No, do not include in Eligible Population. Stop Processing.
  - b. If Diagnosis of Any Fracture as Listed in the Denominator equals Yes, proceed to check Procedure Performed.
4. Check Procedure Performed:
  - a. If Procedure as Listed in the Denominator equals No, do not include in Eligible Population. Stop Processing.
  - b. If Procedure as Listed in the Denominator equals Yes, include in Eligible Population.
5. Denominator Population:
  - a. Denominator Population is all Eligible Episodes in the Denominator. Denominator is represented as Denominator in the Sample Calculation listed at the end of this document. Letter d<sup>2</sup> equals 100 episodes in the Sample Calculation.
6. Start Numerator
7. Check Patients Who Utilize Hospice Services Any Time During the Measurement Period:
  - a. If Patients Who Utilize Hospice Services Any Time During the Measurement Period equals Yes, include in Data Completeness Met and Denominator Exclusion.
  - b. Data Completeness Met and Denominator Exclusion letter is represented as Data Completeness and Performance Rate in the Sample Calculation listed at the end of this document. Letter x<sup>4</sup> equals 10 episodes in the Sample Calculation.
  - c. If Patients Who Utilize Hospice Services Any Time During the Measurement Period equals No, proceed to check Patient had a Bone Mineral Density Test in the Past Two Years OR Received Osteoporosis Medication or Therapy in the Past 12 Months.
8. Check Patient had a Bone Mineral Density Test in the Past Two Years OR Received Osteoporosis Medication or Therapy in the Past 12 Months:

- a. If Patient had a Bone Mineral Density Test in the Past Two Years OR Received Osteoporosis Medication or Therapy in the Past 12 Months equals Yes, include in Data Completeness Met and Denominator Exclusion.
  - b. Data Completeness Met and Denominator Exclusion letter is represented as Data Completeness and Performance Rate in the Sample Calculation listed at the end of this document. Letter x<sup>5</sup> equals 10 episodes in the Sample Calculation.
  - c. If Patient had a Bone Mineral Density Test in the Past Two Years OR Received Osteoporosis Medication or Therapy in the Past 12 Months equals No, proceed to check Patients Age 65 or Older in Institutional Special Needs Plans (SNP) or Residing in Long-Term Care with POS code 32, 33, 34, 54, or 56 any time during the measurement period.
9. Check Patients Age 65 or Older in Institutional Special Needs Plans (SNP) or Residing in Long-Term Care with POS code 32, 33, 34, 54, or 56 any time during the measurement period
- d. If Patient Age is 65 or Older in Institutional Special Needs Plans (SNP) or Residing in Long-Term Care with POS code 32, 33, 34, 54, or 56 any time during the measurement period Yes, include in Data Completeness Met and Denominator Exclusion.
  - e. Data Completeness Met and Denominator Exclusion letter is represented as Data Completeness and Performance Rate in the Sample Calculation listed at the end of this document. Letter x<sup>6</sup> equals 10 episodes in the Sample Calculation.
  - f. If Patient Age is 65 or Older in Institutional Special Needs Plans (SNP) or Residing in Long-Term Care with POS code 32, 33, 34, 54, or 56 any time during the measurement period equals No, proceed to check Central Dual-Energy X-Ray Absorptiometry (DXA) Results Documented
10. Check Central Dual-Energy X-Ray Absorptiometry (DXA) Results Documented:
- a. If Central Dual-Energy X-Ray Absorptiometry (DXA) Results Documented equals Yes, include in Data Completeness Met and Performance Met.
  - b. Data Completeness Met and Performance Met letter is represented as Data Completeness and Performance Rate in the Sample Calculation listed at the end of this document. Letter a<sup>3</sup> equals 20 episodes in the Sample Calculation.
  - c. If Central Dual-Energy X-Ray Absorptiometry (DXA) Results Documented equals No, proceed to check Pharmacological Therapy (Other Than Minerals/Vitamins) for Osteoporosis Prescribed.
11. Check Pharmacological Therapy (Other Than Minerals/Vitamins) for Osteoporosis Prescribed:
- a. If Pharmacological Therapy (Other Than Minerals/Vitamins) for Osteoporosis Prescribed equals Yes, include in Data Completeness Met and Performance Met.
  - b. Data Completeness Met and Performance Met letter is represented as Data Completeness and Performance Rate in the Sample Calculation listed at the end of this document. Letter a<sup>4</sup> equals 10 episodes in Sample Calculation.
  - c. If Pharmacological Therapy (Other Than Minerals/Vitamins) for Osteoporosis Prescribed equals No, proceed to check Central Dual-Energy X-Ray Absorptiometry (DXA) Measurement Was Not Performed, Reason Not Otherwise Specified.
12. Check Central Dual-energy X-Ray Absorptiometry (DXA) Measurement Was Not Performed, Reason Not Otherwise Specified:

- a. If Central Dual-Energy X-Ray Absorptiometry (DXA) Measurement Was Not Performed, Reason Not Otherwise Specified equals Yes, include in Data Completeness Met and Performance Not Met.
  - b. Data Completeness Met and Performance Not Met letter is represented as Data Completeness in the Sample Calculation listed at the end of this document. Letter c<sup>3</sup> equals 20 episodes in the Sample Calculation.
  - c. If Central Dual-Energy X-Ray Absorptiometry (DXA) Measurement Was Not Performed, Reason Not Otherwise Specified equals No, proceed to check Pharmacologic Therapy for Osteoporosis Not Prescribed, Reasons Not Given.
13. Check Pharmacologic Therapy for Osteoporosis was Not Prescribed, Reason Not Given:
- a. If Pharmacologic Therapy for Osteoporosis was Not Prescribed, Reason Not Given equals Yes, include in Data Completeness Met and Performance Not Met.
  - b. Data Completeness Met and Performance Not Met letter is represented as Data Completeness in the Sample Calculation listed at the end of this document. Letter c<sup>4</sup> equals 10 episodes in the Sample Calculation.
  - c. If Pharmacologic Therapy for Osteoporosis was Not Prescribed, Reason Not Given equals No, proceed to check Data Completeness Not Met.
14. Check Data Completeness Not Met:
- a. If Data Completeness Not Met, the Quality Data Code was not submitted. 10 episodes have been subtracted from the Data Completeness Numerator in Sample Calculation.

**SAMPLE CALCULATIONS:**

**Data Completeness=**  

$$\frac{\text{Denominator Exclusion } (x^1+x^2+x^3+x^4+x^5+x^6=60 \text{ episodes}) + \text{Performance Met } (a^1+a^2+a^3+a^4= 60 \text{ episodes}) + \text{Performance Not Met } (c^1+c^2+c^3+c^4= 60 \text{ episodes})}{\text{Eligible Population / Denominator } (d^1+d^2= 200 \text{ episodes})} = \frac{180 \text{ episodes}}{200 \text{ episodes}} = 90.00\%$$

**Performance Rate=**  

$$\frac{\text{Performance Met } (a^1+a^2+a^3+a^4= 60 \text{ episodes})}{\text{Data Completeness Numerator } (180 \text{ episodes}) - \text{Denominator Exclusion } (x^1+x^2+x^3+x^4+x^5+x^6=60 \text{ episodes})} = \frac{60 \text{ episodes}}{120 \text{ episodes}} = 50.00\%$$