

Quality ID #226 (NQF 0028): Preventive Care and Screening: Tobacco Use: Screening and Cessation Intervention

– National Quality Strategy Domain: Community/Population Health

– Meaningful Measure Area: Prevention and Treatment of Opioid and Substance Use Disorders

2019 COLLECTION TYPE:
MEDICARE PART B CLAIMS

MEASURE TYPE:
Process

DESCRIPTION:

Percentage of patients aged 18 years and older who were screened for tobacco use one or more times within 24 months **AND** who received tobacco cessation intervention if identified as a tobacco user

INSTRUCTIONS:

This measure is to be submitted a minimum of **once per performance period** for patients seen during the performance period. This measure is intended to reflect the quality of services provided for preventive screening for tobacco use. For the purposes of the measure, the denominator eligible encounter should be used to determine if the numerator action for each of the submission criteria was performed within the 24 month look back period from the date of the denominator eligible encounter. This measure may be submitted by Merit-based Incentive Payment System (MIPS) eligible clinicians who perform the quality actions described in the measure based on the services provided and the measure-specific denominator coding.

This measure will be calculated with 3 performance rates:

- 1) Percentage of patients aged 18 years and older who were screened for tobacco use one or more times within 24 months
- 2) Percentage of patients aged 18 years and older who were screened for tobacco use and identified as a tobacco user who received tobacco cessation intervention
- 3) Percentage of patients aged 18 years and older who were screened for tobacco use one or more times within 24 months AND who received tobacco cessation intervention if identified as a tobacco user

Measure Submission Type:

Measure data may be submitted by individual MIPS eligible clinicians using Medicare Part B claims. The listed denominator criteria are used to identify the intended patient population. The numerator quality-data codes included in this specification are used to submit the quality actions allowed by the measure on the claim form(s). All measure-specific coding should be submitted on the claim(s) representing the denominator eligible encounter and selected numerator option.

THERE ARE THREE SUBMISSION CRITERIA FOR THIS MEASURE:

- 1) All patients who were screened for tobacco use

AND

- 2) All patients who were identified as a tobacco user and who received tobacco cessation intervention

AND

- 3) All patients who were screened for tobacco use and, if identified as a tobacco user received tobacco cessation intervention, or identified as a tobacco non-user

This measure contains three submission criteria which aim to identify patients who were screened for tobacco use (submission criteria 1), patients who were identified as tobacco users and who received tobacco cessation intervention (submission criteria 2), and a comprehensive look at the overall performance on tobacco screening and cessation intervention (submission criteria 3). By separating this measure into various submission criteria, the MIPS eligible professional or MIPS eligible clinician will be able to better ascertain where gaps in performance exist, and identify opportunities for improvement. The overall rate (submission criteria 3) can be utilized to compare performance to prior published versions of this measure.

SUBMISSION CRITERIA 1: ALL PATIENTS WHO WERE SCREENED FOR TOBACCO USE

DENOMINATOR (SUBMISSION CRITERIA 1):

All patients aged 18 years and older

DENOMINATOR NOTE: *Signifies that this CPT Category I code is a non-covered service under the PFS (Physician Fee Schedule). These non-covered services will not be counted in the denominator population for Medicare Part B claims measures.

Denominator Criteria (Eligible Cases):

Patients aged ≥ 18 years on date of encounter

AND

Patient encounter during the performance period (CPT or HCPCS): 90791, 90792, 90832, 90834, 90837, 90845, 92002, 92004, 92012, 92014, 92521, 92522, 92523, 92524, 92540, 92557, 92625, 96150, 96151, 96152, 97165, 97166, 97167, 97168, 99201, 99202, 99203, 99204, 99205, 99212, 99213, 99214, 99215, 99341, 99342, 99343, 99344, 99345, 99347, 99348, 99349, 99350, 99385*, 99386*, 99387*, 99395*, 99396*, 99397*, 99401*, 99402*, 99403*, 99404*, 99411*, 99412*, 99429*, G0438, G0439

WITHOUT

Telehealth Modifier: GQ, GT, 95, POS 02

NUMERATOR (SUBMISSION CRITERIA 1):

Patients who were screened for tobacco use at least once within 24 months

Definitions:

Tobacco Use – Includes any type of tobacco.

NUMERATOR NOTE: In the event that a patient is screened for tobacco use and tobacco status is unknown, submit G9905. Denominator Exception(s) are determined on the date of the denominator eligible encounter for all submission criteria.

Numerator Quality-Data Coding Options:

Patient Screened for Tobacco Use, Identified as a Tobacco User or Tobacco Non-User

Performance Met: G9902:

Patient screened for tobacco use AND identified as a tobacco user

OR

Performance Met: G9903:

Patient screened for tobacco use AND identified as a tobacco non-user

OR

Tobacco Use Screening not Performed for Medical Reasons

(One G-code [G9904] is required on the claim form to submit documented circumstances when the action described in the numerator is not performed for medical reasons.)

Denominator Exception: G9904:

Documentation of medical reason(s) for not screening for tobacco use (e.g., limited life expectancy, other medical reason)

OR

Tobacco Use Screening not Performed, Reason Not Given

(One G-code [G9905] is required on the claim form to submit circumstances when the action described in the numerator is not performed and the reason is not given.)

Performance Not Met: G9905: Patient not screened for tobacco use, reason not given

SUBMISSION CRITERIA 2: ALL PATIENTS WHO WERE IDENTIFIED AS A TOBACCO USER AND WHO RECEIVED TOBACCO CESSATION INTERVENTION

DENOMINATOR (SUBMISSION CRITERIA 2):

All patients aged 18 years and older who were screened for tobacco use and identified as a tobacco user

DENOMINATOR NOTE: *Signifies that this CPT Category I code is a non-covered service under the PFS (Physician Fee Schedule). These non-covered services will not be counted in the denominator population for Medicare Part B claims measures.

Denominator Criteria (Eligible Cases):

Patients aged ≥ 18 years on date of encounter

AND

All eligible instances when **G9902** is submitted for Performance Met (patient screened for tobacco use AND identified as a tobacco user) in the numerator of Submission Criteria 1

AND

Patient encounter during the performance period (CPT or HCPCS): 90791, 90792, 90832, 90834, 90837, 90845, 92002, 92004, 92012, 92014, 92521, 92522, 92523, 92524, 92540, 92557, 92625, 96150, 96151, 96152, 97165, 97166, 97167, 97168, 99201, 99202, 99203, 99204, 99205, 99212, 99213, 99214, 99215, 99341, 99342, 99343, 99344, 99345, 99347, 99348, 99349, 99350, 99385*, 99386*, 99387*, 99395*, 99396*, 99397*, 99401*, 99402*, 99403*, 99404*, 99411*, 99412*, 99429*, G0438, G0439

WITHOUT

Telehealth Modifier: GQ, GT, 95, POS 02

NUMERATOR (SUBMISSION CRITERIA 2):

Patients who received tobacco cessation intervention

Definitions:

Tobacco Cessation Intervention – Includes brief counseling (3 minutes or less), and/or pharmacotherapy.

Note: For the purpose of this measure, brief counseling (e.g., minimal and intensive advice/counseling interventions conducted both in person and over the phone) qualifies for the numerator. Written self-help materials (e.g., brochures, pamphlets) and complementary/alternative therapies do not qualify for the numerator.

NUMERATOR NOTE: This measure defines tobacco cessation counseling as lasting 3 minutes or less. Services typically provided under CPT codes 99406 and 99407 satisfy the requirement of tobacco cessation intervention, as these services provide tobacco cessation counseling for 3-10 minutes. If a patient received these types of services, submit G-code G9906. Denominator Exception(s) are determined on the date of the most recent denominator eligible encounter for all submission criteria.

Numerator Quality-Data Coding Options:

Patient Identified as Tobacco User Received Tobacco Cessation Intervention

(Two G-codes [G9902 & G9906] are required on the claim form to submit when the action described in the numerator is performed.)

Performance Met: G9906:

Patient identified as a tobacco user received tobacco cessation intervention (counseling and/or pharmacotherapy)

OR

Patient Identified as Tobacco User Did Not Receive Tobacco Cessation Intervention for Medical Reasons

(Two G-codes [G9902 & G9907] are required on the claim form to submit documented circumstances when the action described in the numerator is not performed for medical reasons.)

Denominator Exception: G9907:

Documentation of medical reason(s) for not providing tobacco cessation intervention (e.g., limited life expectancy, other medical reason)

OR

Patient Identified as Tobacco User Did Not Receive Tobacco Cessation Intervention, Reason Not Given

(Two G-codes [G9902 & G9908] are required on the claim form to submit circumstances when the action described in the numerator is not performed and the reason is not given.)

Performance Not Met: G9908:

Patient identified as tobacco user did not receive tobacco cessation intervention (counseling and/or pharmacotherapy), reason not given

SUBMISSION CRITERIA 3: ALL PATIENTS WHO WERE SCREENED FOR TOBACCO USE AND, IF IDENTIFIED AS A TOBACCO USER RECEIVED TOBACCO CESSATION INTERVENTION, OR IDENTIFIED AS A TOBACCO NON-USER

DENOMINATOR (SUBMISSION CRITERIA 3):

All patients aged 18 years and older

DENOMINATOR NOTE: *Signifies that this CPT Category I code is a non-covered service under the PFS (Physician Fee Schedule). These non-covered services will not be counted in the denominator population for Medicare Part B claims measures.

Denominator Criteria (Eligible Cases):

Patients aged ≥ 18 years on date of encounter

AND

Patient encounter during the performance period (CPT or HCPCS): 90791, 90792, 90832, 90834, 90837, 90845, 92002, 92004, 92012, 92014, 92521, 92522, 92523, 92524, 92540, 92557, 92625, 96150, 96151, 96152, 97165, 97166, 97167, 97168, 99201, 99202, 99203, 99204, 99205, 99212, 99213, 99214, 99215, 99341, 99342, 99343, 99344, 99345, 99347, 99348, 99349, 99350, 99385*, 99386*, 99387*, 99395*, 99396*, 99397*, 99401*, 99402*, 99403*, 99404*, 99411*, 99412*, 99429*, G0438, G0439

WITHOUT

Telehealth Modifier: GQ, GT, 95, POS 02

NUMERATOR (SUBMISSION CRITERIA 3):

Patients who were screened for tobacco use at least once within 24 months **AND** who received tobacco cessation intervention if identified as a tobacco user

Definitions:

Tobacco Use – Includes any type of tobacco.

Tobacco Cessation Intervention – Includes brief counseling (3 minutes or less), and/or pharmacotherapy.

Note: For the purpose of this measure, brief counseling (e.g., minimal and intensive advice/counseling interventions conducted both in person and over the phone) qualifies for the numerator. Written self-help

materials (e.g., brochures, pamphlets) and complementary/alternative therapies do not qualify for the numerator.

NUMERATOR NOTE: *In the event that a patient is screened for tobacco use and identified as a user but did not receive tobacco cessation intervention, or if tobacco status is unknown, submit 4004F with 8P. This measure defines tobacco cessation counseling as lasting 3 minutes or less. Services typically provided under CPT codes 99406 and 99407 satisfy the requirement of tobacco cessation intervention, as these services provide tobacco cessation counseling for 3-10 minutes. If a patient received these types of services, submit CPT II 4004F. Denominator Exception(s) are determined on the date of the denominator eligible encounter for all submission criteria.*

Numerator Quality-Data Coding Options:

Patient Screened for Tobacco Use, Identified as a Tobacco User and Received Tobacco Cessation Intervention

Performance Met: CPT II 4004F: Patient screened for tobacco use AND received tobacco cessation intervention (counseling, pharmacotherapy, or both), if identified as a tobacco user

OR

Patient Screened for Tobacco Use and Identified as a Tobacco Non-User

Performance Met: CPT II 1036F: Current tobacco non-user

OR

Tobacco Screening not Performed OR Tobacco Cessation Intervention not Provided for Medical Reasons

Append a modifier (1P) to CPT Category II code 4004F OR submit a G-code (G9909) to submit documented circumstances that appropriately exclude patients from the denominator.

Denominator Exception: 4004F with 1P: Documentation of medical reason(s) for not screening for tobacco use (e.g., limited life expectancy, other medical reason)

OR

Denominator Exception: G9909 Documentation of medical reason(s) for not providing tobacco cessation intervention if identified as a tobacco user (e.g., limited life expectancy, other medical reason)

OR

Tobacco Screening not Performed OR Tobacco Cessation Intervention not Provided, Reason Not Otherwise Specified

Append a submission modifier (8P) to CPT Category II code 4004F to submit circumstances when the action described in the numerator is not performed and the reason is not otherwise specified.

Performance Not Met: 4004F with 8P: Tobacco screening not performed OR tobacco cessation intervention not provided, reason not otherwise specified

RATIONALE:

This measure is intended to promote adult tobacco screening and tobacco cessation interventions for those who use tobacco products. There is good evidence that tobacco screening and brief cessation intervention (including counseling and/or pharmacotherapy) is successful in helping tobacco users quit. Tobacco users who are able to stop using tobacco lower their risk for heart disease, lung disease, and stroke.

CLINICAL RECOMMENDATION STATEMENTS:

The USPSTF recommends that clinicians ask all adults about tobacco use, advise them to stop using tobacco, and provide behavioral interventions and U.S. Food and Drug Administration (FDA) –approved pharmacotherapy for cessation to adults who use tobacco. (Grade A Recommendation) (U.S. Preventive Services Task Force, 2015)

The USPSTF recommends that clinicians ask all pregnant women about tobacco use, advise them to stop using tobacco, and provide behavioral interventions for cessation to pregnant women who use tobacco. (Grade A Recommendation) (U.S. Preventive Services Task Force, 2015)

The USPSTF concludes that the current evidence is insufficient to recommend electronic nicotine delivery systems for tobacco cessation in adults, including pregnant women. The USPSTF recommends that clinicians direct patients who smoke tobacco to other cessation interventions with established effectiveness and safety (previously stated). (Grade I Statement) (U.S. Preventive Services Task Force, 2015)

COPYRIGHT:

The Measure is not a clinical guideline, does not establish a standard of medical care, and has not been tested for all potential applications.

The Measure, while copyrighted, can be reproduced and distributed, without modification, for noncommercial purposes, eg, use by health care providers in connection with their practices. Commercial use is defined as the sale, license, or distribution of the Measure for commercial gain, or incorporation of the Measure into a product or service that is sold, licensed or distributed for commercial gain.

Commercial uses of the Measure require a license agreement between the user and the PCPI® Foundation (PCPI®) or the American Medical Association (AMA). Neither the AMA, nor the former AMA-convened Physician Consortium for Performance Improvement® (AMA-PCPI), nor PCPI, nor their members shall be responsible for any use of the Measure.

AMA and PCPI encourage use of the Measure by other health care professionals, where appropriate.

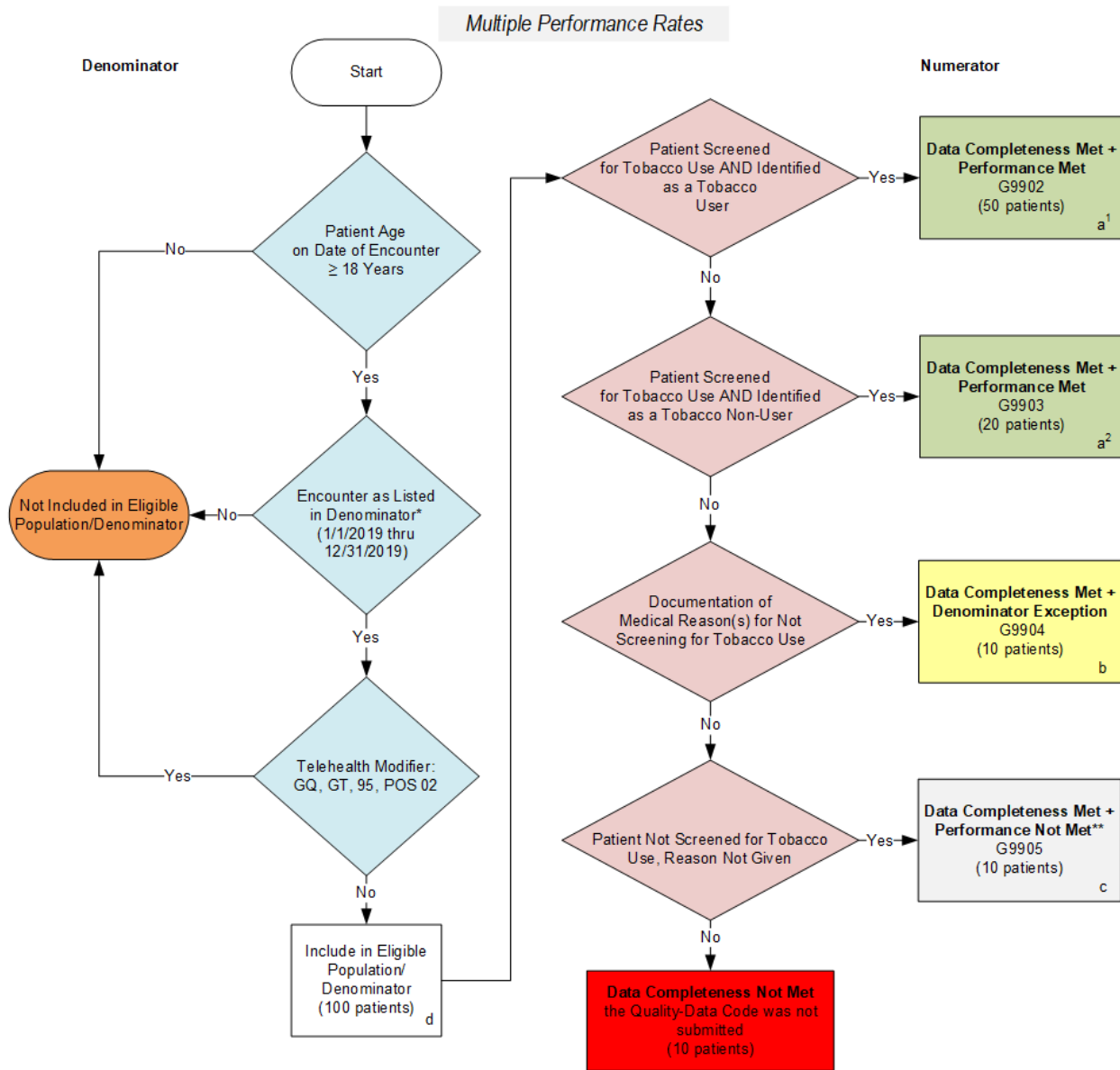
THE MEASURE AND SPECIFICATIONS ARE PROVIDED "AS IS" WITHOUT WARRANTY OF ANY KIND.

© 2018 PCPI® Foundation and American Medical Association. All Rights Reserved.

Limited proprietary coding is contained in the Measure specifications for convenience. Users of the proprietary code sets should obtain all necessary licenses from the owners of these code sets. The AMA, the PCPI and its members and former members of the AMA-PCPI disclaim all liability for use or accuracy of any Current Procedural Terminology (CPT®) or other coding contained in the specifications.

CPT® contained in the Measure specifications is copyright 2004-2018 American Medical Association. LOINC® is copyright 2004-2018 Regenstrief Institute, Inc. This material contains SNOMED Clinical Terms® (SNOMED CT®) copyright 2004-2018 International Health Terminology Standards Development Organization. ICD-10 is copyright 2018 World Health Organization. All Rights Reserved.

**2019 Medicare Part B Claims Flow for Quality ID #226 NQF #0028:
Preventive Care and Screening: Tobacco Use: Screening and Cessation Intervention
Submission Criteria One**



SAMPLE CALCULATIONS SUBMISSION CRITERIA ONE:

Data Completeness=

$$\frac{\text{Performance Met (a}^1\text{+a}^2\text{=70 patients) + Denominator Exception (b=10 patients) + Performance Not Met (c=10 patients)}}{\text{Eligible Population / Denominator (d=100 patients)}} = \frac{90 \text{ patients}}{100 \text{ patients}} = 90.00\%$$

Performance Rate=

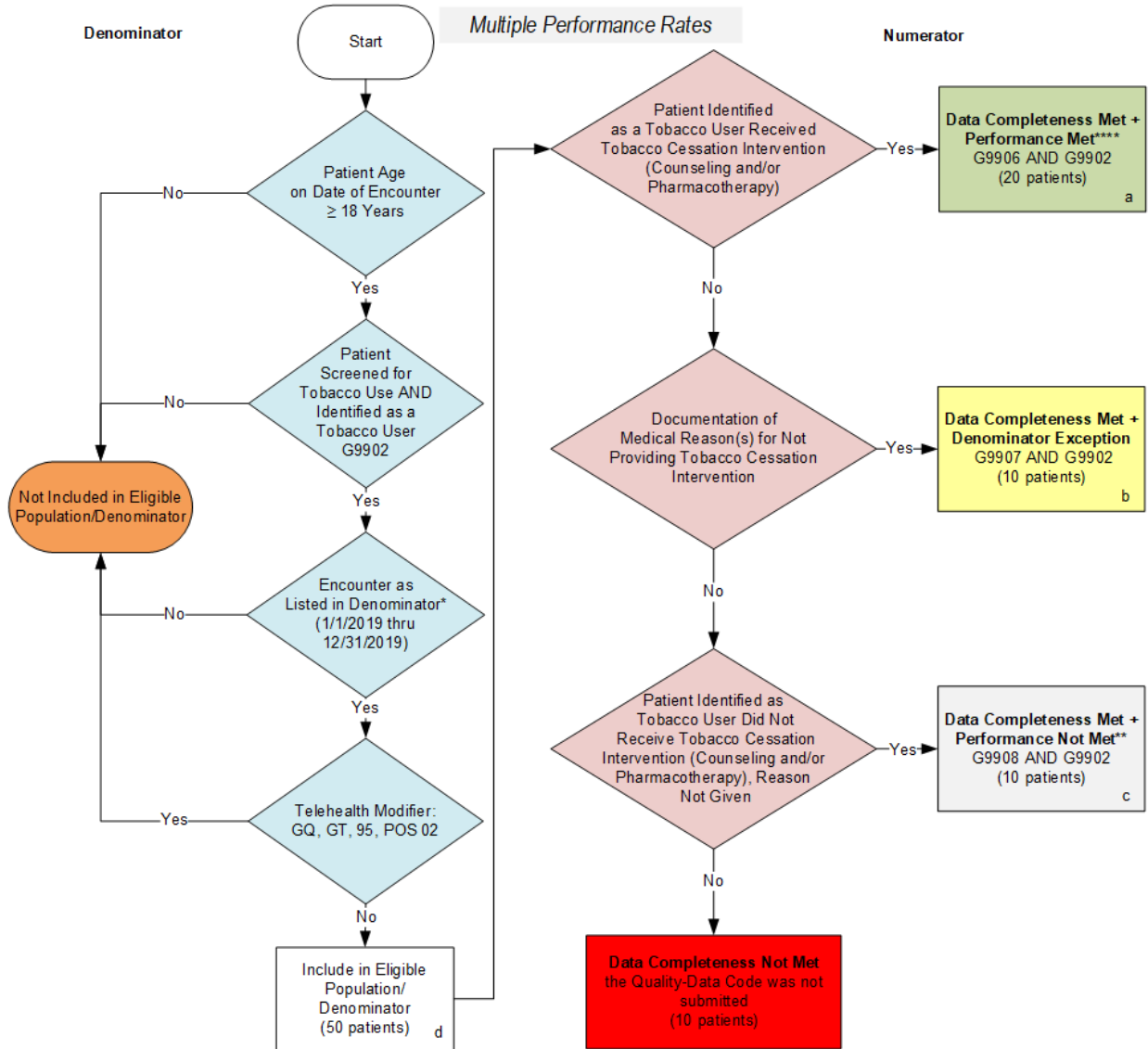
$$\frac{\text{Performance Met (a}^1\text{+a}^2\text{=70 patients)}}{\text{Data Completeness Numerator (90 patients) – Denominator Exception (b=10 patients)}} = \frac{70 \text{ patients}}{80 \text{ patients}} = 87.50\%$$

*See the posted Measure Specification for specific coding and instructions to submit this measure.

**In the event that the tobacco status is unknown submit G9905.

NOTE: Submission Frequency: Patient-process

**2019 Medicare Part B Claims Flow for Quality ID #226 NQF #0028:
Preventive Care and Screening: Tobacco Use: Screening and Cessation Intervention
Submission Criteria Two**



SAMPLE CALCULATIONS SUBMISSION CRITERIA TWO:

Data Completeness=

$$\frac{\text{Performance Met (a=20 patients)} + \text{Denominator Exception (b=10 patients)} + \text{Performance Not Met (c=10 patients)}}{\text{Eligible Population / Denominator (d=50 patients)}} = \frac{40 \text{ patients}}{50 \text{ patients}} = 80.00\%$$

Performance Rate=

$$\frac{\text{Performance Met (a=20 patients)}}{\text{Data Completeness Numerator (40 patients) - Denominator Exception (b=10 patients)}} = \frac{20 \text{ patients}}{30 \text{ patients}} = 66.67\%$$

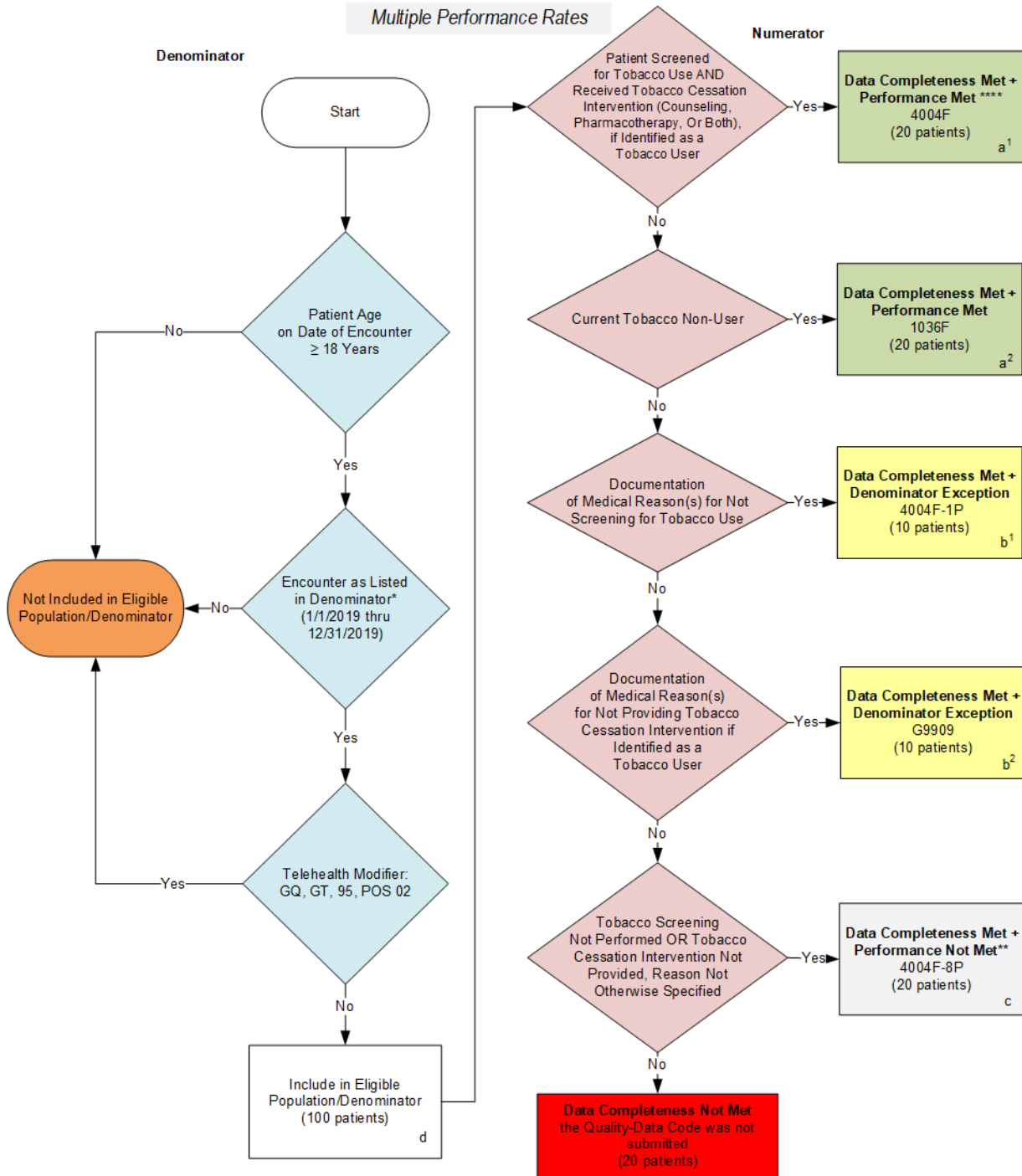
*See the posted Measure Specification for specific coding and instructions to submit this measure.

**In the event that a patient is identified as a user but did not receive tobacco cessation intervention submit G9908.

***This measure defines tobacco cessation counseling as lasting 3 minutes or less. Services typically provided under CPT codes 99406 and 99407 satisfy the requirement of tobacco cessation intervention, as these services provide tobacco cessation counseling for 3-10 minutes. If a patient received these types of services, submit G-code G9906.

NOTE: Submission Frequency: Patient-process

**2019 Medicare Part B Claims Flow for Quality ID #226 NQF #0028:
Preventive Care and Screening: Tobacco Use: Screening and Cessation Intervention
Submission Criteria Three**



*See the posted Measure Specification for specific coding and instructions to submit this measure.

**In the event that a patient is identified as a user but did not receive tobacco cessation intervention submit G9908.

****This measure defines tobacco cessation counseling as lasting 3 minutes or less. Services typically provided under CPT codes 99406 and 99407 satisfy the requirement of tobacco cessation intervention, as these services provide tobacco cessation counseling for 3-10 minutes. If a patient received these types of services, submit G-code G9906.

NOTE: Submission Frequency: Patient-process

**2019 Medicare Part B Claims Flow for Quality ID #226 NQF #0028:
Preventive Care and Screening: Tobacco Use: Screening and Cessation Intervention
Submission Criteria Three**

Multiple Performance Rates

SAMPLE CALCULATIONS SUBMISSION CRITERIA THREE:

Data Completeness=

$$\frac{\text{Performance Met (a}^1+\text{a}^2=40 \text{ patients)} + \text{Denominator Exception (b}^1+\text{b}^2=20 \text{ patients)} + \text{Performance Not Met (c=20 patients)}}{\text{Eligible Population / Denominator (d=100 patients)}} = \frac{80 \text{ patients}}{100 \text{ patients}} = 80.00\%$$

Performance Rate=

$$\frac{\text{Performance Met (a}^1+\text{a}^2=40 \text{ patients)}}{\text{Data Completeness Numerator (80 patients) – Denominator Exception (b}^1+\text{b}^2=20 \text{ patients)}} = \frac{40 \text{ patients}}{60 \text{ patients}} = 66.67\%$$

*See the posted Measure Specification for specific coding and instructions to submit this measure.

**In the event that a patient is identified as a user but did not receive tobacco cessation intervention submit 4004F-8P.

***This measure defines tobacco cessation counseling as lasting 3 minutes or less. Services typically provided under CPT codes 99406 and 99407 satisfy the requirement of tobacco cessation intervention, as these services provide tobacco cessation counseling for 3-10 minutes. If a patient received these types of services, submit 4004F.

NOTE: Submission Frequency: Patient-process

CPT only copyright 2018 American Medical Association. All rights reserved.
The measure diagrams were developed by CMS as a supplemental resource to be used in conjunction with the measure specifications. They should not be used alone or as a substitution for the measure specification.
v3

**2019 Medicare Part B Claims Flow for Quality ID #226 NQF #0028:
Preventive Care and Screening: Tobacco Use: Screening and Cessation Intervention**

This Measure Has Three Submission Criteria. All Performance Rates Must Be Submitted if Patient Is Identified as a Tobacco User. If Patient is Identified as a Tobacco Non-User, only Performance Rates for Submission Criteria One and Three Must Be Submitted.

Multiple Performance Rates

Submission Criteria #1 All Patients Who Were Screened for Tobacco Use

SAMPLE CALCULATIONS SUBMISSION CRITERIA ONE:

Data Completeness=

$$\frac{\text{Performance Met (a}^1+\text{a}^2=70 \text{ patients)} + \text{Denominator Exception (b=10 patients)} + \text{Performance Not Met (c=10 patients)}}{\text{Eligible Population / Denominator (d=100 patients)}} = \frac{90 \text{ patients}}{100 \text{ patients}} = 90.00\%$$

Performance Rate=

$$\frac{\text{Performance Met (a}^1+\text{a}^2=70 \text{ patients)}}{\text{Data Completeness Numerator (90 patients) - Denominator Exception (b=10 patients)}} = \frac{70 \text{ patients}}{80 \text{ patients}} = 87.50\%$$

Submission Criteria #2 All Patients Who Were Identified as a Tobacco User Who Received Tobacco Cessation Intervention

SAMPLE CALCULATIONS SUBMISSION CRITERIA TWO:

Data Completeness=

$$\frac{\text{Performance Met (a=20 patients)} + \text{Denominator Exception (b=10 patients)} + \text{Performance Not Met (c=10 patients)}}{\text{Eligible Population / Denominator (d=50 patients)}} = \frac{40 \text{ patients}}{50 \text{ patients}} = 80.00\%$$

Performance Rate=

$$\frac{\text{Performance Met (a=20 patients)}}{\text{Data Completeness Numerator (40 patients) - Denominator Exception (b=10 patients)}} = \frac{20 \text{ patients}}{30 \text{ patients}} = 66.67\%$$

Submission Criteria #3 Patients Screened for Tobacco Use AND Who Received Tobacco Cessation Intervention if Identified as a Tobacco User

SAMPLE CALCULATIONS SUBMISSION CRITERIA THREE:

Data Completeness=

$$\frac{\text{Performance Met (a}^1+\text{a}^2=40 \text{ patients)} + \text{Denominator Exception (b}^1+\text{b}^2=20 \text{ patients)} + \text{Performance Not Met (c=20 patients)}}{\text{Eligible Population / Denominator (d=100 patients)}} = \frac{80 \text{ patients}}{100 \text{ patients}} = 80.00\%$$

Performance Rate=

$$\frac{\text{Performance Met (a}^1+\text{a}^2=40 \text{ patients)}}{\text{Data Completeness Numerator (80 patients) - Denominator Exception (b}^1+\text{b}^2=20 \text{ patients)}} = \frac{40 \text{ patients}}{60 \text{ patients}} = 66.67\%$$

**2019 Medicare Part B Claims Flow Narrative for Quality ID #226 NQF #0028:
Preventive Care and Screening: Tobacco Use: Screening and Cessation Intervention**

Please refer to the specific section of the specification to identify the denominator and numerator information for use in submitting this Individual Specification.

Submission Criteria #1

1. Start with Denominator
2. Check Patient Age:
 - a. If Patient Age is greater than or equal to 18 Years on Date of Encounter equals No during the measurement period, do not include in Eligible Population. Stop Processing.
 - b. If Patient Age is greater than or equal to 18 Years on Date of Encounter equals Yes during the measurement period, proceed to check Encounter Performed.
3. Check Encounter Performed:
 - a. If Encounter as Listed in the Denominator equals No, do not include in Eligible Population. Stop Processing.
 - b. If Encounter as Listed in the Denominator equals Yes, proceed to check Telehealth Modifier.
4. Check Telehealth Modifier:
 - a. If Telehealth Modifier equals Yes, do not include in Eligible Population. Stop Processing.
 - b. If Telehealth Modifier equals No, include in Eligible Population.
5. Denominator Population:
 - a. Denominator Population is all Eligible Patients in the Denominator. Denominator is represented as Denominator in the Sample Calculation listed at the end of this document. Letter d equals 100 patients in the Sample Calculation.
6. Start Numerator
7. Check Patient Screened for Tobacco Use AND Identified as a Tobacco User:
 - a. If Patient Screened for Tobacco Use AND Identified as a Tobacco User equals Yes, include in Data Completeness Met and Performance Met.
 - b. Data Completeness Met and Performance Met letter is represented in the Data Completeness and Performance Rate in the Sample Calculation listed at the end of this document. Letter a¹ equals 50 patients in the Sample Calculation.
 - c. If Patient Screened for Tobacco Use AND Identified as a Tobacco User equals No, proceed to check Patient Screened for Tobacco Use AND Identified as a Tobacco Non-User.
8. Check Patient Screened for Tobacco Use AND Identified as a Tobacco Non-User:
 - a. If Patient Screened for Tobacco Use AND Identified as a Tobacco Non-User equals Yes, include in Data Completeness Met and Performance Met.

- b. Data Completeness Met and Performance Met letter is represented in the Data Completeness and Performance Rate in the Sample Calculation listed at the end of this document. Letter a² equals 20 patients in the Sample Calculation.
 - c. If Patient Screened for Tobacco Use AND Identified as a Tobacco Non-User equals No, proceed to check Documentation of Medical Reason(s) for Not Screening for Tobacco Use.
9. Check Documentation of Medical Reason(s) for Not Screening for Tobacco Use:
- a. If Documentation of Medical Reason(s) for Not Screening for Tobacco Use equals Yes, include in Data Completeness Met and Denominator Exception.
 - b. Data Completeness Met and Denominator Exception letter is represented in the Data Completeness and Performance Rate in the Sample Calculation listed at the end of this document. Letter b equals 10 patients in the Sample Calculation.
 - c. If Documentation of Medical Reason(s) for Not Screening for Tobacco Use equals No, proceed to check Patient Not Screened for Tobacco Use, Reason Not Given.
10. Check Patient Not Screened for Tobacco Use, Reason Not Given:
- a. If Patient Not Screened for Tobacco Use, Reason Not Given equals Yes, include in the Data Completeness Met and Performance Not Met.
 - b. Data Completeness Met and Performance Not Met letter is represented in the Data Completeness in the Sample Calculation listed at the end of this document. Letter c equals 10 patients in the Sample Calculation.
 - c. If Patient Not Screened for Tobacco Use, Reason Not Given equals No, proceed to check Data Completeness Not Met.
11. Check Data Completeness Not Met:
- a. If Data Completeness Not Met, the Quality Data Code was not submitted. 10 patients have been subtracted from the Data Completeness Numerator in the Sample Calculation.

SAMPLE CALCULATIONS SUBMISSION CRITERIA ONE:

Data Completeness=

$$\frac{\text{Performance Met (a}^1+\text{a}^2=70 \text{ patients)} + \text{Denominator Exception (b=10 patients)} + \text{Performance Not Met (c=10 patients)}}{\text{Eligible Population / Denominator (d=100 patients)}} = \frac{90 \text{ patients}}{100 \text{ patients}} = 90.00\%$$

Performance Rate=

$$\frac{\text{Performance Met (a}^1+\text{a}^2=70 \text{ patients)}}{\text{Data Completeness Numerator (90 patients) – Denominator Exception (b=10 patients)}} = \frac{70 \text{ patients}}{80 \text{ patients}} = 87.50\%$$

**2019 Medicare Part B Claims Flow Narrative for Quality ID #226 NQF #0028:
Preventive Care and Screening: Tobacco Use: Screening and Cessation Intervention**

Please refer to the specific section of the specification to identify the denominator and numerator information for use in submitting this Individual Specification.

Submission Criteria #2

1. Start with Denominator
2. Check Patient Age:
 - a. If Patient Age is greater than or equal to 18 Years on Date of Encounter equals No, do not include in Eligible Population. Stop Processing.
 - b. If Patient Age is greater than or equal to 18 Years on Date of Encounter equals Yes, proceed to check Patient Screened for Tobacco Use AND Identified as a Tobacco User.
3. Check Patient Screened for Tobacco Use AND Identified as a Tobacco User:
 - a. If Patient Screened for Tobacco Use AND Identified as a Tobacco User equals Yes, proceed to check Encounter Performed.
 - b. If Patient Screened for Tobacco Use AND Identified as a Tobacco User equals No, do not include in Eligible Population. Stop Processing.
4. Check Encounter Performed:
 - a. If Encounter as Listed in the Denominator equals No, do not include in Eligible Population. Stop Processing.
 - b. If Encounter as Listed in the Denominator equals Yes, proceed to check Telehealth Modifier.
5. Check Telehealth Modifier:
 - a. If Telehealth Modifier equals Yes, do not include in Eligible Population. Stop Processing.
 - b. If Telehealth Modifier equals No, include in Eligible Population.
6. Denominator Population:
 - a. Denominator Population is all Eligible Patients in the Denominator. Denominator is represented as Denominator in the Sample Calculation listed at the end of this document. Letter d equals 50 patients in the Sample Calculation.
7. Start Numerator
8. Check Patient Identified as a Tobacco User Received Tobacco Cessation Intervention (Counseling and/or Pharmacotherapy):
 - a. If Patient Identified as a Tobacco User Received Tobacco Cessation Intervention (Counseling and/or Pharmacotherapy) equals Yes, include in Data Completeness Met and Performance Met.

- b. Data Completeness Met and Performance Met letter is represented in the Data Completeness and Performance Rate in the Sample Calculation listed at the end of this document. Letter a equals 20 patients in the Sample Calculation.
 - c. If Patient Identified as a Tobacco User Received Tobacco Cessation Intervention (Counseling and/or Pharmacotherapy) equals No, proceed to check Documentation of Medical Reason(s) for Not Providing Tobacco Cessation Intervention.
9. Check Documentation of Medical Reason(s) for Not Providing Tobacco Cessation Intervention:
- a. If Documentation of Medical Reason(s) for Not Providing Tobacco Cessation Intervention equals Yes, include in Data Completeness Met and Denominator Exception.
 - b. Data Completeness Met and Denominator Exception letter is represented in the Data Completeness and Performance Rate in the Sample Calculation listed at the end of this document. Letter b equals 10 patients in the Sample Calculation.
 - c. If Documentation of Medical Reason(s) for Not Providing Tobacco Cessation Intervention equals No, proceed to check Patient Identified as Tobacco User Did Not Receive Tobacco Cessation Intervention (Counseling and/or Pharmacotherapy), Reason Not Given.
10. Check Patient Identified as Tobacco User Did Not Receive Tobacco Cessation Intervention (Counseling and/or Pharmacotherapy), Reason Not Given:
- a. If Patient Identified as Tobacco User Did Not Receive Tobacco Cessation Intervention (Counseling and/or Pharmacotherapy), Reason Not Given equals Yes, include in the Data Completeness Met and Performance Not Met.
 - b. Data Completeness Met and Performance Not Met letter is represented in the Data Completeness in the Sample Calculation listed at the end of this document. Letter c equals 10 patients in the Sample Calculation.
 - c. If Patient Identified as Tobacco User Did Not Receive Tobacco Cessation Intervention (Counseling and/or Pharmacotherapy), Reason Not Given equals No, proceed to check Data Completeness Not Met.
11. Check Data Completeness Not Met:
- a. If Data Completeness Not Met, the Quality-Data Code was not submitted. 10 patients have been subtracted from the Data Completeness Numerator in the Sample Calculation.

SAMPLE CALCULATIONS SUBMISSION CRITERIA TWO:

Data Completeness=

$$\frac{\text{Performance Met (a=20 patients) + Denominator Exception (b=10 patients) + Performance Not Met (c=10 patients)}}{\text{Eligible Population / Denominator (d=50 patients)}} = \frac{40 \text{ patients}}{50 \text{ patients}} = 80.00\%$$

Performance Rate=

$$\frac{\text{Performance Met (a=20 patients)}}{\text{Data Completeness Numerator (40 patients) - Denominator Exception (b=10 patients)}} = \frac{20 \text{ patients}}{30 \text{ patients}} = 66.67\%$$

**2019 Medicare Part B Claims Flow Narrative for Quality ID #226 NQF #0028:
Preventive Care and Screening: Tobacco Use: Screening and Cessation Intervention**

Please refer to the specific section of the specification to identify the denominator and numerator information for use in submitting this Individual Specification.

Submission Criteria #3

1. Start with Denominator
2. Check Patient Age:
 - a. If Patient Age is greater than or equal to 18 Years on Date of Encounter equals No, do not include in Eligible Population. Stop Processing.
 - b. If Patient Age is greater than or equal to 18 Years on Date of Encounter equals Yes, proceed to check Encounter Performed.
3. Check Encounter Performed:
 - a. If Encounter as Listed in the Denominator equals No, do not include in Eligible Population. Stop Processing.
 - b. If Encounter as Listed in the Denominator equals Yes, proceed to check Telehealth Modifier.
4. Check Telehealth Modifier:
 - a. If Telehealth Modifier equals Yes, do not include in Eligible Population. Stop Processing.
 - b. If Telehealth Modifier equals No, include in Eligible Population.
5. Denominator Population:
 - a. Denominator Population is all Eligible Patients in the denominator. Denominator is represented as Denominator in the Sample Calculation listed at the end of this document. Letter d equals 100 patients in the Sample Calculation.
6. Start Numerator
7. Check Patient Screened for Tobacco Use AND Received Tobacco Cessation Intervention (Counseling, Pharmacotherapy, or Both), if Identified as a Tobacco User:
 - a. If Patient Screened for Tobacco Use AND Received Tobacco Cessation Intervention (Counseling, Pharmacotherapy, or Both), if Identified as a Tobacco User equals Yes, include in Data Completeness Met and Performance Met.
 - b. Data Completeness Met and Performance Met letter is represented in the Data Completeness and Performance Rate in the Sample Calculation listed at the end of this document. Letter a¹ equals 20 patients in the Sample Calculation.
 - c. If Patient Screened for Tobacco Use AND Received Tobacco Cessation Intervention (Counseling, Pharmacotherapy, or Both), if Identified as a Tobacco User equals No, proceed to check Current Tobacco Non-User.
8. Check Current Tobacco Non-User:

- a. If Current Tobacco Non-User equals Yes, include in Data Completeness Met and Performance Met.
 - b. Data Completeness Met and Performance Met letter is represented in the Data Completeness and Performance Rate in the Sample Calculation listed at the end of this document. Letter a² equals 20 patients in the Sample Calculation.
 - c. If Current Tobacco Non-User equals No, proceed to check Documentation of Medical Reason(s) for Not Screening for Tobacco Use.
9. Check Documentation of Medical Reason(s) for Not Screening for Tobacco Use:
- a. If Documentation of Medical Reason(s) for Not Screening for Tobacco Use equals Yes, include in Data Completeness Met and Denominator Exception.
 - b. Data Completeness Met and Denominator Exception letter is represented in the Data Completeness and Performance Rate in the Sample Calculation listed at the end of this document. Letter b¹ equals 10 patients in the Sample Calculation.
 - c. If Documentation of Medical Reason(s) for Not Screening for Tobacco Use equals No, proceed to check Documentation of Medical Reason(s) for Not Providing Tobacco Cessation Intervention if Identified as a Tobacco User.
10. Check Documentation of Medical Reason(s) for Not Providing Tobacco Cessation Intervention if Identified as a Tobacco User:
- a. If Documentation of Medical Reason(s) for Not Providing Tobacco Cessation Intervention if Identified as a Tobacco User equals Yes, include in Data Completeness Met and Denominator Exception.
 - b. Data Completeness Met and Denominator Exception letter is represented in the Data Completeness and Performance Rate in the Sample Calculation listed at the end of this document. Letter b² equals 10 patients in the Sample Calculation.
 - c. If Documentation of Medical Reason(s) for Not Providing Tobacco Cessation Intervention if Identified as a Tobacco User equals No, proceed to check Tobacco Screening Not Performed OR Tobacco Cessation Intervention Not Provided, Reason Not Otherwise Specified.
11. Check Tobacco Screening Not Performed OR Tobacco Cessation Intervention Not Provided, Reason Not Otherwise Specified:
- a. If Tobacco Screening Not Performed OR Tobacco Cessation Intervention Not Provided, Reason Not Otherwise Specified equals Yes, include in the Data Completeness Met and Performance Not Met.
 - b. Data Completeness Met and Performance Not Met letter is represented in the Data Completeness in the Sample Calculation listed at the end of this document. Letter c equals 20 patients in the Sample Calculation.
 - c. If Tobacco Screening Not Performed OR Tobacco Cessation Intervention Not Provided, Reason Not Otherwise Specified equals No, proceed to check Data Completeness Not Met.
12. Check Data Completeness Not Met:
- a. If Data Completeness Not Met, the Quality-Data Code was not submitted. 20 patients have been subtracted from the Data Completeness Numerator in the Sample Calculation.

SAMPLE CALCULATIONS SUBMISSION CRITERIA THREE:

Data Completeness=

$$\frac{\text{Performance Met (a}^1+\text{a}^2=40 \text{ patients)} + \text{Denominator Exception (b}^1+\text{b}^2=20 \text{ patients)} + \text{Performance Not Met (c=20 patients)}}{\text{Eligible Population / Denominator (d=100 patients)}} = \frac{80 \text{ patients}}{100 \text{ patients}} = 80.00\%$$

Performance Rate=

$$\frac{\text{Performance Met (a}^1+\text{a}^2=40 \text{ patients)}}{\text{Data Completeness Numerator (80 patients) – Denominator Exception (b}^1+\text{b}^2=20 \text{ patients)}} = \frac{40 \text{ patients}}{60 \text{ patients}} = 66.67\%$$