

Measure #443: Non-Recommended Cervical Cancer Screening in Adolescent Females – National Quality Strategy Domain: Patient Safety

2017 OPTIONS FOR INDIVIDUAL MEASURES:
REGISTRY ONLY

MEASURE TYPE:
Process

DESCRIPTION:
The percentage of adolescent females 16–20 years of age who were screened unnecessarily for cervical cancer

INSTRUCTIONS:
This measure is to be reported **once per performance period** for female patients seen during the performance period. There is no diagnosis associated with this measure. This measure may be reported by eligible clinicians who perform the quality actions described in the measure based on services provided and the measure-specific denominator coding.

Measure Reporting:
The listed denominator criteria is used to identify the intended patient population. The numerator options included in this specification are used to submit the quality actions allowed by the measure. The quality-data codes listed do not need to be submitted for registry-based submissions; however, these codes may be submitted for those registries that utilize claims data.

DENOMINATOR:
Adolescent females 16-20 years of age with a visit during the measurement period

Denominator Criteria (Eligible Cases):
Patients aged 16-20 years of age on date of encounter

AND
Patient encounter during the **performance period** (CPT or HCPCS): 99201, 99202, 99203, 99204, 99205, 99212, 99213, 99214, 99215, G0402, G0438, G0439

AND NOT

DENOMINATOR EXCLUSIONS:

A history of cervical cancer, HIV, or immunodeficiency any time during the patient's history through the end of the measurement period: C53.0, C53.1, C53.8, C53.9, D06.0, D06.1, D06.7, D06.9, Z85.41, D80.0, D80.1, D80.2, D80.3, D80.4, D80.5, D80.6, D80.7, D80.8, D80.9, D81.0, D81.1, D81.2, D81.4, D81.6, D81.7, D81.89, D81.9, D82.0, D82.1, D82.2, D82.3, D82.4, D82.8, D82.9, D83.0, D83.1, D83.2, D83.8, D83.9, D84.0, D84.1, D84.8, D84.9, D89.3, D89.810, D89.811, D89.812, D89.813, D89.82, D89.89, D89.9, B20, Z21, B97.35

OR

Patients who use hospice services any time during the measurement period: G9805

NUMERATOR:
Patients who received cervical cytology or an HPV test during the measurement period

Numerator Instructions:

INVERSE MEASURE - A lower calculated performance rate for this measure indicates better clinical care or control. The "Performance Not Met" numerator option for this measure is the representation of the better clinical quality or control. Reporting that numerator option will produce a performance rate that trends closer to 0%, as quality increases. For inverse measures a rate of 100% means all of the denominator eligible patients did not receive the appropriate care or were not in proper control.

Numerator Options:

Performance Met:

Patients who received cervical cytology or an HPV test (G9806)

OR

Performance Not Met:

Patients who did not receive cervical cytology or an HPV test (G9807)

RATIONALE:

This measure assesses the percentage of female adolescents 16–20 years of age who were unnecessarily screened for cervical cancer. A lower rate indicates better performance for this measure.

There are multiple medical societies and evidence-based guidelines which recommend against cervical cancer screening in a general population of females under 21 years of age; however, fewer than 25 percent of clinicians provide care consistent with guidelines (Yabroff 2009). Although screening has been shown to be highly effective in the 21–65 age group, the USPSTF determined there is adequate evidence that screening women younger than 21—regardless of sexual history—does not reduce the incidence and mortality of cervical cancer, compared with beginning screening at 21 (Moyer 2012). The USPSTF found evidence that screening in the younger age group leads to more harm than benefit because abnormal cellular changes are likely to be transient and to resolve on their own, and resulting treatment may have an adverse effect on future child-bearing. Thus, the USPSTF specifically recommends against screening women under 21 years of age (Moyer 2012).

Moyer, V.A., U.S. Preventive Services Task Force. 2012. "Screening for cervical cancer: U.S. Preventive Services Task Force recommendation statement." *Ann Intern Med.* 156(12):880-91.

Yabroff, K.R., M. Saraiya, H.I. Meissner, et al. 2009. "Specialty Differences in Primary Care Physician Reports of Papanicolaou Test Screening Practices: A National Survey, 2006 to 2007." *Ann Int Med.* 151(9):602-11.

CLINICAL RECOMMENDATION STATEMENTS:

The United States Preventive Services Task Force (Moyer 2012):

"The USPSTF recommends against screening for cervical cancer in women younger than age 21 years (D recommendation)."

American College of Obstetricians and Gynecologists (2012):

"Cervical cancer screening should begin at age 21 years. Women younger than age 21 years should not be screened regardless of the age of sexual initiation or the presence of other behavior-related risk factors."

American Cancer Society, American Society for Colposcopy & Cervical Pathology, American Society for Clinical Pathology (Saslow 2012):

"Cervical cancer screening should begin at age 21 years. Women aged younger than 21 years should not be screened regardless of the age of sexual initiation or other risk factors."

American College of Obstetricians and Gynecologists. 2012. "Practice Bulletin #131 Screening for Cervical Cancer." *Obstet Gynecol.* 120:1222–38

Moyer, V.A., U.S. Preventive Services Task Force. 2012. "Screening for cervical cancer: U.S. Preventive Services Task Force recommendation statement." *Ann Intern Med.* 156(12):880-91.

Saslow, D., D. Solomon, H.W. Lawson, et al. 2012. "American Cancer Society, American Society for Colposcopy and Cervical Pathology, and American Society for Clinical Pathology Screening Guidelines for Prevention and Early Detection of Cervical Cancer." Am J Pathol. 137:516-42.

COPYRIGHT:

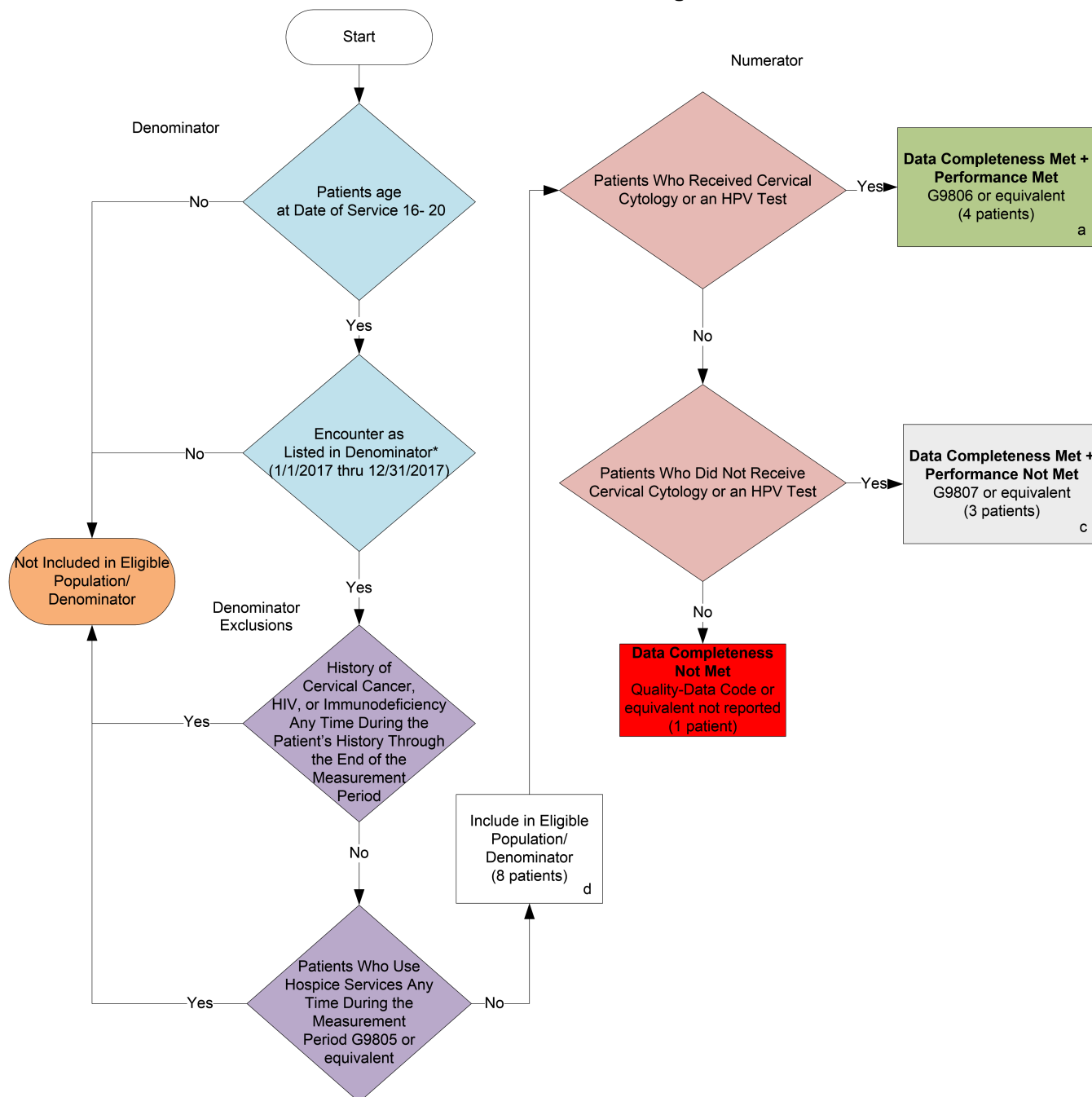
These performance measures were developed and are owned by the National Committee for Quality Assurance ("NCQA"). These performance measures are not clinical guidelines and do not establish a standard of medical care. NCQA makes no representations, warranties, or endorsement about the quality of any organization or physician that uses or reports performance measures and NCQA has no liability to anyone who relies on such measures. NCQA holds a copyright in this measure and can rescind or alter this measure at any time. Users of the measure shall not have the right to alter, enhance, or otherwise modify the measure and shall not disassemble, recompile, or reverse engineer the source code or object code relating to the measure. Anyone desiring to use or reproduce the measure without modification for a noncommercial purpose may do so without obtaining any approval from NCQA. All commercial uses must be approved by NCQA and are subject to a license at the discretion of NCQA. Use by health care providers in connection with their own practices is not commercial use. A "commercial use" refers to any sale, license, or distribution of a measure for commercial gain, or incorporation of a measure into any product or service that is sold, licensed, or distributed for commercial gain, even if there is no actual charge for inclusion of the measure. ©2004-2016 National Committee for Quality Assurance, all rights reserved.

Performance measures developed by NCQA for CMS may look different from the measures solely created and owned by NCQA.

CPT® contained in the Measures specifications is copyright 2004-2016 American Medical Association.

2017 Registry Individual Measure Flow

#443: Non-Recommended Cervical Cancer Screening in Adolescent Females



SAMPLE CALCULATIONS:

Data Completeness=

Performance Met (a=4 patients) + Performance Not Met (c=2 patients) = 7 patients = 87.50%
Eligible Population / Denominator (d=8 patients) = 8 patients

Performance Rate=

Performance Met (a=4 patients) = 4 patients = 57.14%
Data Completeness Numerator (7 patients) = 7 patients

*See the posted Measure Specification for specific coding and instructions to report this measure.

A lower calculated performance rate for this measure indicates better clinical control and care.

NOTE: Reporting Frequency: Patient-process

CPT only copyright 2016 American Medical Association. All rights reserved.
The measure diagrams were developed by CMS as a supplemental resource to be used in conjunction with the measure specifications. They should not be used alone or as a substitution for the measure specification. v1

2017 Registry Individual Measure Flow
#443: Non-Recommended Cervical Cancer Screening in Adolescent Females

Please refer to the specific section of the Measure Specification to identify the denominator and numerator information for use in reporting this Individual Measure.

1. Start with Denominator
2. Check Patient Age:
 - a. If Patient age is 16-20 years equals No, do not include in Eligible Patient Population. Stop Processing.
 - b. If Patient age is 16-20 equals Yes, proceed to check Encounter Performed.
3. Check Encounter Performed:
 - a. If Encounter Performed as Listed in the Denominator equals No, do not include in Eligible Patient Population. Stop Processing.
 - b. If Encounter Performed as Listed in the Denominator equals Yes, proceed to check History of Cervical Cancer, HIV, or Immunodeficiency Any Time During the Patient's History Through the End of the Measurement Period.
4. Check History of Cervical Cancer, HIV, or Immunodeficiency Any Time During the Patient's History Through the End of the Measurement Period:
 - a. If History of Cervical Cancer, HIV, or Immunodeficiency Any Time During the Patient's History Through the End of the Measurement Period equals No, proceed to check Patients Who Use Hospice Services Any Time During the Measurement Period.
 - b. If History of Cervical Cancer, HIV, or Immunodeficiency Any Time During the Patient's History Through the End of the Measurement Period equals Yes, do not include in Eligible Patient Population. Stop Processing.
5. Check Patients Who Use Hospice Services Any Time During the Measurement Period:
 - a. If Patients Who Use Hospice Services Any Time During the Measurement Period equals No, include in the Eligible population.
 - b. If Patients Who Use Hospice Services Any Time During the Measurement Period equals Yes, do not include in Eligible Patient Population. Stop Processing.
6. Denominator Population:
 - a. Denominator population is all Eligible Patients in the denominator. Denominator is represented as Denominator in the Sample Calculation listed at the end of this document. Letter d equals 8 patients in the sample calculation.
7. Start Numerator
8. Check Patients Who Received Cervical Cytology or an HPV Test:
 - a. If Patients Who Received Cervical Cytology or an HPV Test equals Yes, include in Data Completeness Met and Performance Met.

- b. Data Completeness Met and Performance Met letter is represented as Data Completeness and Performance Rate in the Sample Calculation listed at the end of this document. Letter a equals 4 patients in Sample Calculation.
 - c. If Patients Recommended for Cervical Cancer Screening equals No, proceed to Patient Who Did Not Receive Cervical Cytology or an HPV Test.
9. Check Patient Who Did Not Receive Cervical Cytology or an HPV Test:
 - a. If Patient Who Did Not Receive Cervical Cytology or an HPV Test equals Yes, include in Data Completeness Met and Performance Not Met.
 - b. Data Completeness Met and Performance Not Met letter is represented as Data Completeness in the Sample Calculation listed at the end of this document. Letter c equals 3 patients in the Sample Calculation.
 - c. If Patient Who Did Not Receive Cervical Cytology or an HPV Test equals No, proceed to Data Completeness Not Met.
10. Check Data Completeness Not Met:
 - a. If Data Completeness Not Met equals No, Quality Data Code or equivalent not reported. 1 patient has been subtracted from the Data Completeness numerator in the sample calculation.

SAMPLE CALCULATIONS:

Data Completeness=

$$\frac{\text{Performance Met (a=4 patients) + Performance Not Met (c=2 patients)}}{\text{Eligible Population / Denominator (d=8 patients)}} = \frac{7 \text{ patients}}{8 \text{ patients}} = 87.50\%$$

Performance Rate=

$$\frac{\text{Performance Met (a=4 patients)}}{\text{Data Completeness Numerator (7 patients)}} = \frac{4 \text{ patients}}{7 \text{ patients}} = 57.14\%$$