

Measure #440: Basal Cell Carcinoma (BCC)/Squamous Cell Carcinoma: Biopsy Reporting Time – Pathologist to Clinician – National Quality Strategy Domain: Communication and Care Coordination

2017 OPTIONS FOR INDIVIDUAL MEASURES:

REGISTRY ONLY

MEASURE TYPE:

Process

DESCRIPTION:

Percentage of biopsies with a diagnosis of cutaneous Basal Cell Carcinoma (BCC) and Squamous Cell Carcinoma (SCC) (including in situ disease) in which the pathologist communicates results to the clinician within 7 days of biopsy date

INSTRUCTIONS:

This measure is to be reported **each time** a biopsy is performed during the **performance period**. It is anticipated that eligible clinicians providing the pathology services for procedures will submit this measure.

Measure Reporting:

The listed denominator criteria is used to identify the intended patient population. The numerator options included in this specification are used to submit the quality actions allowed by the measure. The quality-data codes listed do not need to be submitted for registry-based submissions; however, these codes may be submitted for those registries that utilize claims data.

DENOMINATOR:

All pathology reports generated by the Pathologist/Dermatopathologist consistent with cutaneous basal cell carcinoma or squamous cell carcinoma (to include in situ disease)

Denominator Criteria (Eligible Cases):

Diagnosis for cutaneous basal carcinoma or squamous cell carcinoma (ICD-10-CM): C44.01, C44.02, C44.111, C44.112, C44.119, C44.121, C44.122, C44.129, C44.211, C44.212, C44.219, C44.221, C44.222, C44.229, C44.310, C44.311, C44.319, C44.320, C44.321, C44.329, C44.41, C44.42, C44.510, C44.511, C44.519, C44.520, C44.521, C44.529, C44.611, C44.612, C44.619, C44.621, C44.622, C44.629, C44.711, C44.712, C44.719, C44.721, C44.722, C44.729, C44.81, C44.82, **C44.91, C44.92**, D04.0, D04.10, D04.11, D04.12, D04.20, D04.21, D04.22, D04.30, D04.39, D04.4, D04.5, D04.60, D04.61, D04.62, D04.70, D04.71, D04.72, D04.8, D04.9

AND

Patient procedure during the performance period (CPT): 88304, 88305

AND NOT

DENOMINATOR EXCLUSION:

Pathologists/Dermatopathologists providing a second opinion on a biopsy: G9784

NUMERATOR:

Number of final pathology reports diagnosing cutaneous basal cell carcinoma or squamous cell carcinoma (to include in situ disease) sent from the Pathologist/Dermatopathologist to the biopsying clinician for review within 7 business days from the time when the tissue specimen was received by the pathologist

Numerator Instructions: Requirements for calculating the numerator include the following documentation in the pathologist/ dermatopathologist's tracking system:

- Date tissue specimen received
- Date pathology report was sent to the biopsying clinician

Numerator Options:

Performance Met:

Pathology report diagnosing cutaneous basal cell carcinoma or squamous cell carcinoma (to include in situ disease) sent from the Pathologist/Dermatopathologist to the biopsying clinician for review within 7 business days from the time when the tissue specimen was received by the pathologist (**G9785**)

OR

Performance Not Met:

Pathology report diagnosing cutaneous basal cell carcinoma or squamous cell carcinoma (to include in situ disease) was not sent from the Pathologist/Dermatopathologist to the biopsying clinician for review within 7 business days from the time when the tissue specimen was received by the pathologist (**G9786**)

RATIONALE:

Effective communication through the biopsy report between pathologist and referring physician is essential; as delay may directly affect patient care. Furthermore, lack of timely delivery of results can increase the cost of medical care, error and the anxiety the patient experiences in waiting for results. This measure seeks to ensure timely communication and effective treatment for the patient.

CLINICAL RECOMMENDATION STATEMENTS:

"[Pathology] reports should be issued in a timely manner. Failure to report results promptly may delay patient care (thus uselessly adding to the cost of medical care), [and] lead to error and confusion..." (Holland Frei Cancer Medicine Vol. 8, 2010)

COPYRIGHT:

This Measure is not a clinical guideline, does not establish a standard of medical care, and has not been tested for all potential applications.

This Measure, while copyrighted, can be reproduced and distributed, without modification, for noncommercial purposes, e.g., use by health care providers in connection with their practices. Commercial use is defined as the sale, license, or distribution of the Measure for commercial gain, or incorporation of the Measure into a product or service that is sold, licensed or distributed for commercial gain.

Commercial use of this measure requires a license agreement between the user and the American Academy of Dermatology (AAD). Neither the AAD nor its members shall be responsible for any use of the Measure.

AAD encourages use of this Measure by other health care professionals, where appropriate.

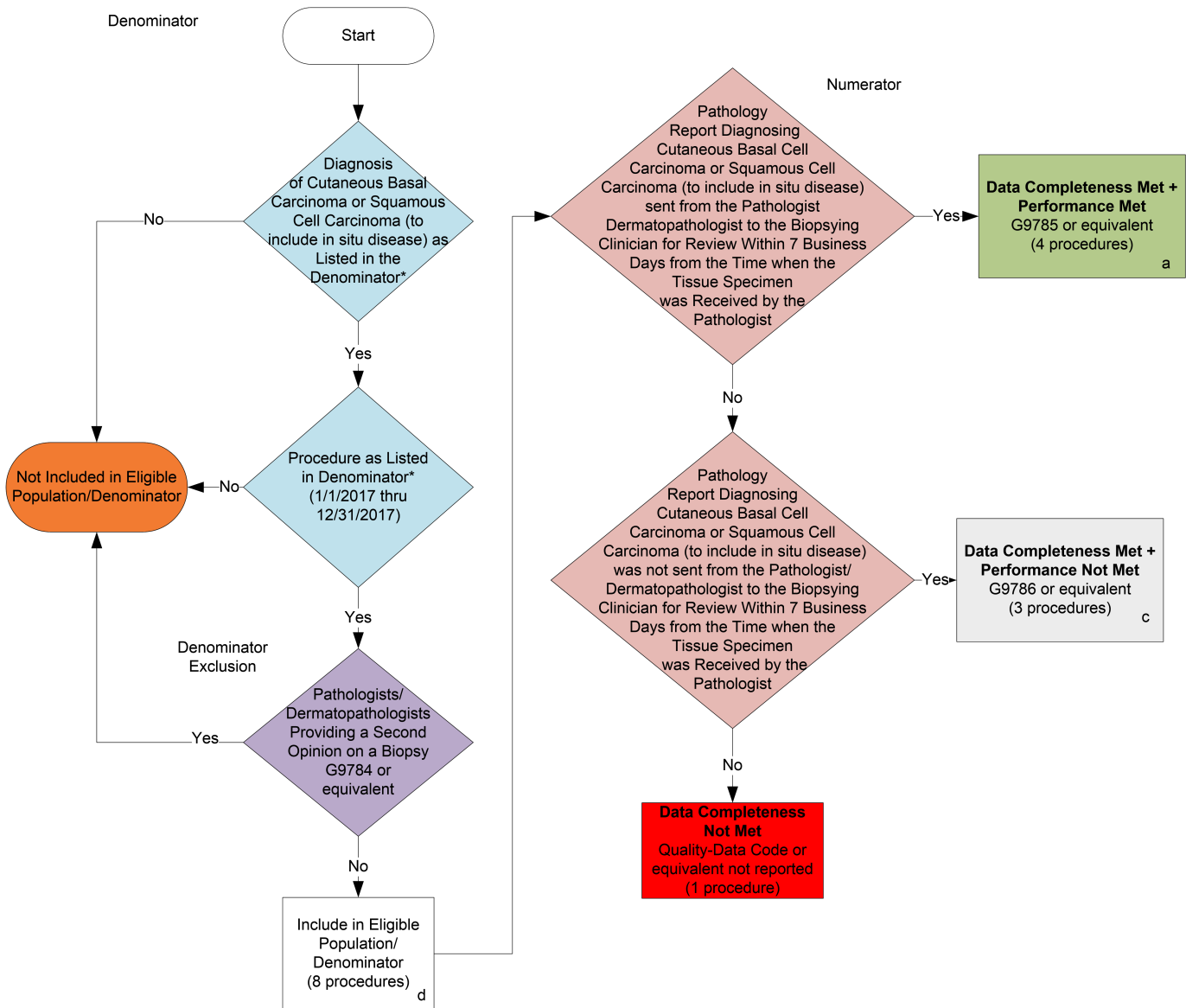
THE MEASURES AND SPECIFICATIONS ARE PROVIDED "AS IS" WITHOUT WARRANTY OF ANY KIND.

© 2014 American Academy of Dermatology. All Rights Reserved. Applicable FARS/DFARS Restrictions Apply to Government Use.

Limited proprietary coding is contained in the Measure specifications for convenience. Users of the proprietary code sets should obtain all necessary licenses from the owners of these code sets. The AAD and its members disclaim all liability for use or accuracy of any Current Procedural Terminology (CPT®) or other coding contained in the specifications.

CPT® contained in the Measures specifications is copyright 2004-2015 American Medical Association. LOINC® copyright 2004-2016 Regenstrief Institute, Inc. SNOMED CLINICAL TERMS (SNOMED CT®) copyright 2004-2016 College of American Pathologists. All Rights Reserved.

2017 Registry Individual Measure Flow
#440 Basal Cell Carcinoma (BCC)/Squamous Cell Carcinoma: Biopsy Reporting Time –
Pathologist to Clinician



SAMPLE CALCULATIONS:

Data Completeness=

$$\frac{\text{Performance Met (a=4 procedures)} + \text{Performance Not Met (c=3 procedures)}}{\text{Eligible Population / Denominator (d=8 procedures)}} = \frac{7 \text{ procedures}}{8 \text{ procedures}} = 87.50\%$$

Performance Rate=

$$\frac{\text{Performance Met (a=4 procedures)}}{\text{Data Completeness Numerator (7 procedures)}} = \frac{4 \text{ procedures}}{7 \text{ procedures}} = 57.14\%$$

* See the posted Measure Specification for specific coding and instructions to report this measure.

NOTE: Reporting Frequency: Procedure

CPT only copyright 2016 American Medical Association. All rights reserved.
 The measure diagrams were developed by CMS as a supplemental resource to be used in conjunction with the measure specifications. They should not be used alone or as a substitution for the measure specification.
 v1

2017 Registry Individual Measure Flow

#440: Basal Cell Carcinoma (BCC)/Squamous Cell Carcinoma: Biopsy Reporting Time – Pathologist to Clinician

Please refer to the specific section of the Measure Specification to identify the denominator and numerator information for use in reporting this Individual Measure.

1. Start with Denominator
2. Check Diagnosis:
 - a. If Diagnosis of Cutaneous Basal Cell Carcinoma or Squamous Cell Carcinoma (to include in situ disease) as Listed in the Denominator equals No during the measurement period, do not include in Eligible Patient Population. Stop Processing.
 - b. If Diagnosis of Cutaneous Basal Cell Carcinoma or Squamous Cell Carcinoma (to include in situ disease) as Listed in the Denominator equals Yes during the measurement period, proceed to check Patient Encounter.
3. Check Patient Encounter:
 - a. If Patient Encounter as Listed in Denominator equals No, do not include in Eligible Patient Population. Stop Processing.
 - b. If Patient Encounter as Listed in Denominator equals Yes, proceed to check Denominator Exclusion.
4. Check Denominator Exclusion, Pathologist /Dermatopathologist Providing a Second Opinion on a Biopsy:
 - a. If Pathologist /Dermatopathologist Providing a Second Opinion on a Biopsy equals Yes, do not include in Eligible Patient Population. Stop Processing.
 - b. If Pathologist /Dermatopathologist Providing a Second Opinion on a Biopsy equals No, include in Eligible Patient Population.
5. Denominator Population:
 - a. Denominator population is all Eligible Patients in the denominator. Denominator is represented as Denominator in the Sample Calculation listed at the end of this document. Letter d equals 8 procedures in the sample calculation.
6. Start Numerator
7. Check Pathology Report Diagnosing Cutaneous Basal Cell Carcinoma or Squamous Cell Carcinoma (to include in situ disease) sent by Pathologist /Dermatopathologist to the Biopsying Clinician for review within 7 Business Days from the Time when the Tissue Specimen was Received by the Pathologist:

- a. If Pathology Report Diagnosing Cutaneous Basal Cell Carcinoma or Squamous Cell Carcinoma (to include in situ disease) sent by Pathologist /Dermatopathologist to the Biopsying Clinician for review within 7 Business Days from the Time when the Tissue Specimen was Received by the Pathologist equals Yes, include in Data Completeness Met and Performance Met.
 - b. Data Completeness Met and Performance Met is represented as Data Completeness and Performance Rate in the Sample Calculation listed at the end of this document. Letter a equals 4 procedures in the Sample Calculation.
 - c. If Pathology Report Diagnosing Cutaneous Basal Cell Carcinoma or Squamous Cell Carcinoma (to include in situ disease) sent by Pathologist /Dermatopathologist to the Biopsying Clinician for review within 7 Business Days from the Time when the Tissue Specimen was Received by the Pathologist equals No, proceed to Pathology Report Diagnosing Cutaneous Basal Cell Carcinoma or Squamous Cell Carcinoma (to include in situ disease) was not sent to the Pathologist /Dermatopathologist to the Biopsying Clinician for review within 7 Business Days from the Time when the Tissue Specimen was Received by the Pathologist.
8. Check Pathology Report Diagnosing Cutaneous Basal Cell Carcinoma or Squamous Cell Carcinoma (to include in situ disease) was not sent to the Pathologist /Dermatopathologist to the Biopsying Clinician for review within 7 Business Days from the Time when the Tissue Specimen was Received by the Pathologist:
- a. If Pathology Report Diagnosing Cutaneous Basal Cell Carcinoma or Squamous Cell Carcinoma (to include in situ disease) was not sent to the Pathologist /Dermatopathologist to the Biopsying Clinician for review within 7 Business Days from the Time when the Tissue Specimen was Received by the Pathologist equals Yes, include in Data Completeness Met and Performance Not Met.
 - b. Data Completeness Met and Performance Not Met is represented as Data Completeness and Performance Rate in the Sample Calculation listed at the end of this document. Letter c equals 3 procedures in the Sample Calculation.
 - c. If Pathology Report Diagnosing Cutaneous Basal Cell Carcinoma or Squamous Cell Carcinoma (to include in situ disease) was not sent to the Pathologist /Dermatopathologist to the Biopsying Clinician for review within 7 Business Days from the Time when the Tissue Specimen was Received by the Pathologist equals No, proceed to Data Completeness Not Met.
9. Check Data Completeness Not Met:
- a. If Data Completeness Not Met equals No, Quality Data Code or equivalent not reported. 1 procedure has been subtracted from the data completeness numerator in sample calculation.

SAMPLE CALCULATIONS:

Data Completeness=

$$\frac{\text{Performance Met (a=4 procedures)} + \text{Performance Not Met (c=3 procedures)}}{\text{Eligible Population / Denominator (d=8 procedures)}} = \frac{7 \text{ procedures}}{8 \text{ procedures}} = 87.50\%$$

Performance Rate=

$$\frac{\text{Performance Met (a=4 procedures)}}{\text{Data Completeness Numerator (7 procedures)}} = \frac{4 \text{ procedures}}{7 \text{ procedures}} = 57.14\%$$