

Measure #410: Psoriasis: Clinical Response to Oral Systemic or Biologic Medications– National Quality Strategy Domain: Person and Caregiver-Centered Experience and Outcomes

2017 OPTIONS FOR INDIVIDUAL MEASURES:

CLAIMS ONLY

MEASURE TYPE:

Outcome

DESCRIPTION:

Percentage of psoriasis patients receiving oral systemic or biologic therapy who meet minimal physician-or patient-reported disease activity levels. It is implied that establishment and maintenance of an established minimum level of disease control as measured by physician-and/or patient-reported outcomes will increase patient satisfaction with and adherence to treatment

INSTRUCTIONS:

This measure is to be reported a minimum of **once per performance period** for all patients during the performance period. This measure may be reported by eligible clinicians who perform the quality actions described in the measure based on the services provided and the measure-specific denominator coding.

Measure Reporting:

The listed denominator criteria is used to identify the intended patient population. The numerator quality-data codes included in this specification are used to submit the quality actions allowed by the measure. All measure-specific coding should be reported on the claim(s) representing the eligible encounter.

DENOMINATOR:

All patients with a diagnosis of psoriasis and treated with an oral systemic or biologic medication for psoriasis

Denominator Criteria (Eligible Cases):

All patients, regardless of age

AND

Diagnosis for psoriasis (ICD-10-CM): L40.0

AND

Patient encounter during the **performance period** (CPT or HCPCS): 99201, 99202, 99203, 99204, 99205, 99212, 99213, 99214, 99215, 99324, 99325, 99326, 99327, 99328, 99334, 99335, 99336, 99337, 99341, 99342, 99343, 99344, 99345, 99347, 99348, 99349, 99350, G0438, G0439

WITHOUT

Telehealth Modifier: GQ, GT

NUMERATOR:

Patients who have a documented physician global assessment (PGA; 6-point scale), body surface area (BSA), psoriasis area and severity index (PASI) and/or dermatology life quality index (DLQI) that meet any one of the below specified benchmarks

Definition:

Consecutive Months - The consecutive treatment allows gaps in the medication treatment up to a total of 4 weeks during the 6 month period. Gaps can include periods in which the patient is changing or refilling medication, but regardless of the number of gaps, the total cannot be for more than 4 weeks.

Numerator Instructions: To satisfy this measure, a patient must achieve any ONE of the following:

- PGA (6-point scale) \leq 2 (clear to mild skin disease)
- BSA < 3% (mild disease)
- PASI < 3 (no or minimal disease)

- DLQI ≤ 5 (no effect or small effect on patient's quality of life)

Numerator Quality-Data Coding Options:

Psoriasis Assessment Tool Documented, Met Specified Benchmark

Performance Met: G9649:

Psoriasis assessment tool documented meeting any one of the specified benchmarks (e.g., (PGA; 6-point scale), body surface area (BSA), psoriasis area and severity index (PASI) and/or dermatology life quality index (DLQI))

AND

G9764:

Patient has been treated with an oral systemic or biologic medication for psoriasis

OR

Documentation of Patient Refusal or Contraindications

Denominator Exception: G9765:

Documentation that the patient declined therapy change, has documented contraindications, or has not been treated with an oral systemic or biologic for at least six consecutive months (e.g., experienced adverse effects or lack of efficacy with all other therapy options) in order to achieve better disease control as measured by PGA, BSA, PASI, or DLQI

OR

Psoriasis Assessment Tool Documented, Not Meeting Specified Benchmark

Performance Not Met: G9651:

Psoriasis assessment tool documented not meeting any one of the specified benchmarks (e.g., (PGA; 6-point scale), body surface area (BSA), psoriasis area and severity index (PASI) and/or dermatology life quality index (DLQI)) or psoriasis assessment tool not documented

AND

G9764:

Patient has been treated with an oral systemic or biologic medication for psoriasis

RATIONALE:

A significant proportion of psoriasis patients who are receiving treatment remain unsatisfied with their therapies due to various reasons including lack of or loss of efficacy, side effects, and inconvenience, among others. Treatment dissatisfaction also contributes to patients discontinuing therapy. This measure evaluates the proportion of psoriasis patients receiving systemic or biologic therapy who meet minimal physician or patient-reported disease activity levels. It is implied that establishment and maintenance of an established minimum level of disease control as measured by physician and/or patient-reported outcomes will increase patient satisfaction with and adherence to treatment

CLINICAL RECOMMENDATION STATEMENTS:

1. Treatment goals (assessment after 10 to 16 weeks, and every 8 weeks thereafter): PASI 75 or PGA of 'clear' or 'almost clear'; or DLQI of 0 or 1.

Minimum efficiency ('lowest hurdle'): PASI 50; DLQI<5 or improvement by at least 5 points.

2. Continue therapy if PASI 75 response (or if PASI 50 response and DLQI≤5)
3. Adequate' response to treatment is defined as either:
 - a. PASI 50 response (or ≥50% improvement in BSA) and ≥5-point improvement in DLQI; or

b. PASI 75 response

Treatment 'success' defined as PASI 75 response (or PASI 50 response and DLQI≤5)

COPYRIGHT:

This Measure is not a clinical guideline, does not establish a standard of medical care, and has not been tested for all potential applications.

This Measure, while copyrighted, can be reproduced and distributed, without modification, for noncommercial purposes, e.g., use by health care providers in connection with their practices. Commercial use is defined as the sale, license, or distribution of the Measure for commercial gain, or incorporation of the Measure into a product or service that is sold, licensed or distributed for commercial gain.

Commercial use of this measure requires a license agreement between the user and the American Academy of Dermatology (AAD). Neither the AAD nor its members shall be responsible for any use of the Measure.

AAD encourages use of this Measure by other health care professionals, where appropriate.

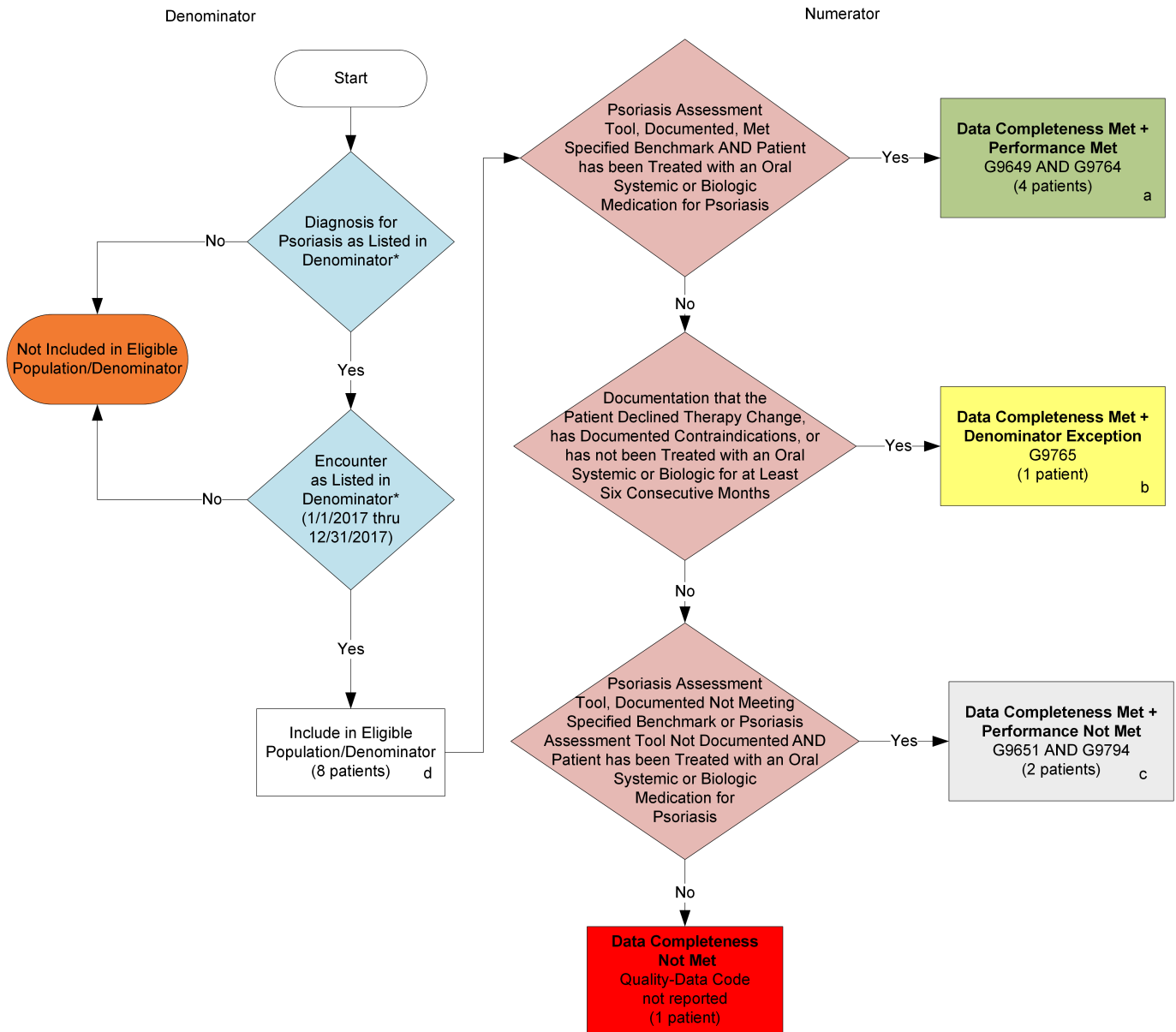
THE MEASURES AND SPECIFICATIONS ARE PROVIDED "AS IS" WITHOUT WARRANTY OF ANY KIND.

© 2014 American Academy of Dermatology. All Rights Reserved. Applicable FARS/DFARS Restrictions Apply to Government Use.

Limited proprietary coding is contained in the Measure specifications for convenience. Users of the proprietary code sets should obtain all necessary licenses from the owners of these code sets. The AAD and its members disclaim all liability for use or accuracy of any Current Procedural Terminology (CPT®) or other coding contained in the specifications.

CPT® contained in the Measures specifications is copyright 2004-2016 American Medical Association. LOINC® copyright 2004-2013 Regenstrief Institute, Inc. SNOMED CLINICAL TERMS (SNOMED CT®) copyright 2004-2013 College of American Pathologists. All Rights Reserved.

2017 Claims Individual Measure Flow #410: Psoriasis: Clinical Response to Oral Systemic or Biologic Medications



SAMPLE CALCULATIONS:

Data Completeness=

$$\frac{\text{Denominator Exclusion (x=0 pts)} + \text{Performance Met (a=4 pts)} + \text{Denominator Exception (b=1 pt)} + \text{Performance Not Met (c=2 pts)}}{\text{Eligible Population / Denominator (d=8 pts)}} = \frac{7 \text{ pts}}{8 \text{ pts}} = 87.50\%$$

Performance Rate=

$$\frac{\text{Performance Met (a=4 pts)}}{\text{Data Completeness Numerator (7 pts) - Denominator Exclusion (x=0 pts) - Denominator Exception (b=1 pt)}} = \frac{4 \text{ pts}}{6 \text{ pts}} = 66.67\%$$

*See the posted Measure Specification for specific coding and instructions to report this measure.
Note: Reporting Frequency: Patient-Process

CPT only copyright 2016 American Medical Association. All rights reserved.

v1

2017 Claims Individual Measure Flow

#410: Psoriasis: Clinical Response to Oral Systemic or Biologic Medications

Please refer to the specific section of the Measure Specification to identify the denominator and numerator information for use in reporting this Individual Measure.

1. Start with Denominator
2. Check Patient Diagnosis:
 - a. If Diagnosis for Psoriasis as Listed in the Denominator equals No, do not include in Eligible Patient Population. Stop Processing.
 - b. If Diagnosis for Psoriasis as Listed in the Denominator equals Yes, proceed to Check Encounter Performed.
3. Check Encounter Performed:
 - a. If Encounter as Listed in the Denominator equals No, do not include in Eligible Patient Population. Stop Processing.
 - b. If Encounter as Listed in the Denominator equals Yes, include in Eligible Population.
4. Denominator Population:
 - a. Denominator population is all Eligible Patients in the denominator. Denominator is represented as Denominator in the Sample Calculation listed at the end of this document. Letter d equals 8 patients in the sample calculation.
5. Start Numerator
6. Check Psoriasis Assessment Tool, Documented, Met Specified Benchmark AND Patient has been Treated with an Oral Systemic or Biologic Medication for Psoriasis:
 - a. If Psoriasis Assessment Tool, Documented, Met Specified Benchmark AND Patient has been Treated with an Oral Systemic or Biologic Medication for Psoriasis equals Yes, include in Data Completeness Met and Performance Met.
 - b. Data Completeness Met and Performance Met letter is represented in the Data Completeness and Performance Rate in the Sample Calculation listed at the end of this document. Letter a equals 4 patients in Sample Calculation.
 - c. If Psoriasis Assessment Tool, Documented, Met Specified Benchmark AND Patient has been Treated with an Oral Systemic or Biologic Medication for Psoriasis equals No, proceed to Documentation that the Patient Declined Therapy Change, has Documented Contraindications, or has not been Treated with an Oral Systemic or Biologic for at Least Six Consecutive Months.
7. Check Documentation that the Patient Declined Therapy Change, has Documented Contraindications, or has not been Treated with an Oral Systemic or Biologic for at Least Six Consecutive Months:
 - a. If Documentation that the Patient Declined Therapy Change, has Documented Contraindications, or has not been Treated with an Oral Systemic or Biologic for at Least Six Consecutive Months equals Yes, include in Data Completeness Met and Denominator Exception.
 - b. Data Completeness Met and Denominator Exception letter is represented in the Data Completeness and Performance Rate in the Sample Calculation listed at the end of this document. Letter b equals 1 patient in the Sample Calculation.

- c. If Documentation that the Patient Declined Therapy Change, has Documented Contraindications, or has not been Treated with an Oral Systemic or Biologic for at Least Six Consecutive Months equals No, proceed to Psoriasis Assessment Tool Documented Not Meeting Specified Benchmark or Psoriasis Assessment Tool Not Documented AND Patient has been Treated with an Oral Systemic or Biologic Medication for Psoriasis.
8. Check Psoriasis Assessment Tool Documented Not Meeting Specified Benchmark or Psoriasis Assessment Tool Not Documented AND Patient has been Treated with an Oral Systemic or Biologic Medication for Psoriasis:
- a. If Psoriasis Assessment Tool Documented Not Meeting Specified Benchmark or Psoriasis Assessment Tool Not Documented AND Patient has been Treated with an Oral Systemic or Biologic Medication for Psoriasis equals Yes, include in Data Completeness Met and Performance Not Met.
 - b. Data Completeness Met and Performance Not Met letter is represented in the Data Completeness and Performance Rate in the Sample Calculation listed at the end of this document. Letter c equals 2 patients in the Sample Calculation.
 - c. If Psoriasis Assessment Tool Documented Not Meeting Specified Benchmark or Psoriasis Assessment Tool Not Documented AND Patient has been Treated with an Oral Systemic or Biologic Medication for Psoriasis equals No, proceed to Data Completeness Not Met.
9. Check Data Completeness Not Met:
- a. If Data Completeness Not Met equals No, Quality Data Code or equivalent not reported. 1 patient has been subtracted from the data completeness numerator in the sample calculation.

SAMPLE CALCULATIONS:

Data Completeness=

$$\frac{\text{Denominator Exclusion (x=0 pts)+Performance Met (a=4 pts)+Denominator Exception (b=1 pt)+Performance Not Met (c=2 pts)}{\text{Eligible Population / Denominator (d=8 pts)}} = \frac{7 \text{ pts}}{8 \text{ pts}} = 87.50\%$$

Performance Rate=

$$\frac{\text{Performance Met (a=4 pts)}}{\text{Data Completeness Numerator (7 pts) – Denominator Exclusion (x=0 pts) – Denominator Exception (b=1 pt)}} = \frac{4 \text{ pts}}{6 \text{ pts}} = 66.67\%$$