

Measure #362: Optimizing Patient Exposure to Ionizing Radiation: Computed Tomography (CT) Images Available for Patient Follow-up and Comparison Purposes – National Quality Strategy
Domain: Communication and Care Coordination

2017 OPTIONS FOR INDIVIDUAL MEASURES:
REGISTRY ONLY

MEASURE TYPE:
Structure

DESCRIPTION:

Percentage of final reports for computed tomography (CT) studies performed for all patients, regardless of age, which document that Digital Imaging and Communications in Medicine (DICOM) format image data are available to non-affiliated external healthcare facilities or entities on a secure, media free, reciprocally searchable basis with patient authorization for at least a 12-month period after the study

INSTRUCTIONS:

This measure is to be reported **each time** a procedure for a computed tomography (CT) imaging report is performed during the performance period. There is no diagnosis associated with this measure. This measure may be reported by eligible clinicians who perform the quality actions described in the measure based on the services provided and the measure-specific denominator coding.

This measure is intended for reporting by facilities that maintain a shared archive of DICOM format image data where images/image data are made available to non-affiliated external healthcare facilities or entities on a searchable basis.

Measure Reporting:

The listed denominator criteria is used to identify the intended patient population. The numerator options included in this specification are used to submit the quality actions allowed by the measure. The quality-data codes listed do not need to be submitted for registry-based submissions; however, these codes may be submitted for those registries that utilize claims data.

DENOMINATOR:

All final reports for patients, regardless of age, undergoing a CT procedure

DENOMINATOR NOTE: *Signifies that this CPT Category I code is a non-covered service under the Medicare Part B Physician Fee Schedule (PFS). These non-covered services should be counted in the denominator population for registry-based measures.

Denominator Criteria (Eligible Cases):

All patients regardless of age

AND

Patient procedure during the performance period (CPT): 70450, 70460, 70470, 70480, 70481, 70482, 70486, 70487, 70488, 70490, 70491, 70492, 70496, 70498, 71250, 71260, 71270, 71275, 72125, 72126, 72127, 72128, 72129, 72130, 72131, 72132, 72133, 72191, 72192, 72193, 72194, 73200, 73201, 73202, 73206, 73700, 73701, 73702, 73706, 74150, 74160, 74170, 74174, 74175, 74176, 74177, 74178, 74261, 74262, 74263*, 75571, 75572, 75573, 75574, 75635, 76380, 76497, 77011, 77012, 77013, 77078, 78072, 78814, 78815, 78816, 0042T

NUMERATOR:

Final reports for CT studies which document that DICOM format image data are available to non-affiliated external healthcare facilities or entities on a secure, media-free, reciprocally searchable basis with patient authorization for at least a 12-month period after the study

Definition:

Media-free - Radiology images that are transmitted electronically ONLY, not images recorded on film, CD, or other imaging transmittal form.

Numerator Options:

Performance Met:

Final report documented that DICOM format image data available to non-affiliated external healthcare facilities or entities on a secure, media free, reciprocally searchable basis with patient authorization for at least a 12-month period after the study (G9340)

OR

Performance Not Met:

DICOM format image data available to non-affiliated external healthcare facilities or entities on a secure, media free, reciprocally searchable basis with patient authorization for at least a 12-month period after the study not documented in final report, reason not given (G9329)

RATIONALE:

The current radiology information systems in hospitals generally do not collect or report radiation exposures and the medical imaging devices that communicate with radiology information systems do not currently forward data on the radiation dose received by a patient from each such test. As a result, physicians are uncertain of their patients' cumulative exposure and lifetime attributable risk (LAR), which is problematic when assessing, prioritizing and discussing the risks and benefits associated with their patients' clinical needs. (Sodickson A, Baeyens PF, Andriole KP, et al., 2009)

It has been estimated that between \$3 and \$10 billion are wasted in the United States annually on unnecessary or duplicative imaging studies. Duplicative imaging procedures could be substantially reduced with improved access to existing imaging data. Additionally, universal access to existing imaging studies to retrieve relevant prior images could improve diagnostic specificity for radiologists and potentially further minimize recommendations for follow-up studies. (Monegain, 2009)

CLINICAL RECOMMENDATION STATEMENTS:

Core functional requirements for an Internet-based system for sharing medical records:

- a) methods to ensure privacy and confidentiality of data;
- b) capability to move and store large data files (eg, images) with the same efficiency and reliability as possible with small data files (eg, text);
- c) construction of registries, which contain "knowledge" of all fragments of medical information (and their physical location) from all sources for a given patient;
- d) an ability to match records and accurately reconcile patient identities without a common patient identifier;
- e) a means to regulate access to data and audit the access;
- f) a method for moving blocks of data from one location to another; and
- g) a method to aggregate and consume the data at the point of care.

Optimal patient care requires that care providers and patients be able to create, manage and access comprehensive electronic health records (EHRs) efficiently and securely. The sharing of radiologic images has become a fundamental part of radiology services and is essential for delivering high-quality care. (Flanders AE, 2009)

COPYRIGHT:

The Measures are not clinical guidelines, do not establish a standard of medical care, and have not been tested for all potential applications.

The Measures, while copyrighted, can be reproduced and distributed, without modification, for noncommercial purposes, e.g., use by health care providers in connection with their practices. Commercial use is defined as the sale, license, or distribution of the Measures for commercial gain, or incorporation of the Measures into a product or service that is sold, licensed or distributed for commercial gain.

Commercial uses of the Measures require a license agreement between the user and the American Medical Association (AMA), [on behalf of the Physician Consortium for Performance Improvement® (PCPI®)], American Board of Medical Specialties (ABMS) and the American College of Radiology (ACR). Neither the AMA, ABMS, ACR, PCPI, nor its members shall be responsible for any use of the Measures.

The AMA's, PCPI's and ABMS's significant past efforts and contributions to the development and updating of the Measures is acknowledged. ACR is solely responsible for the review and enhancement ("Maintenance") of the Measures as of December 31, 2014.

ACR encourages use of the Measures by other health care professionals, where appropriate.

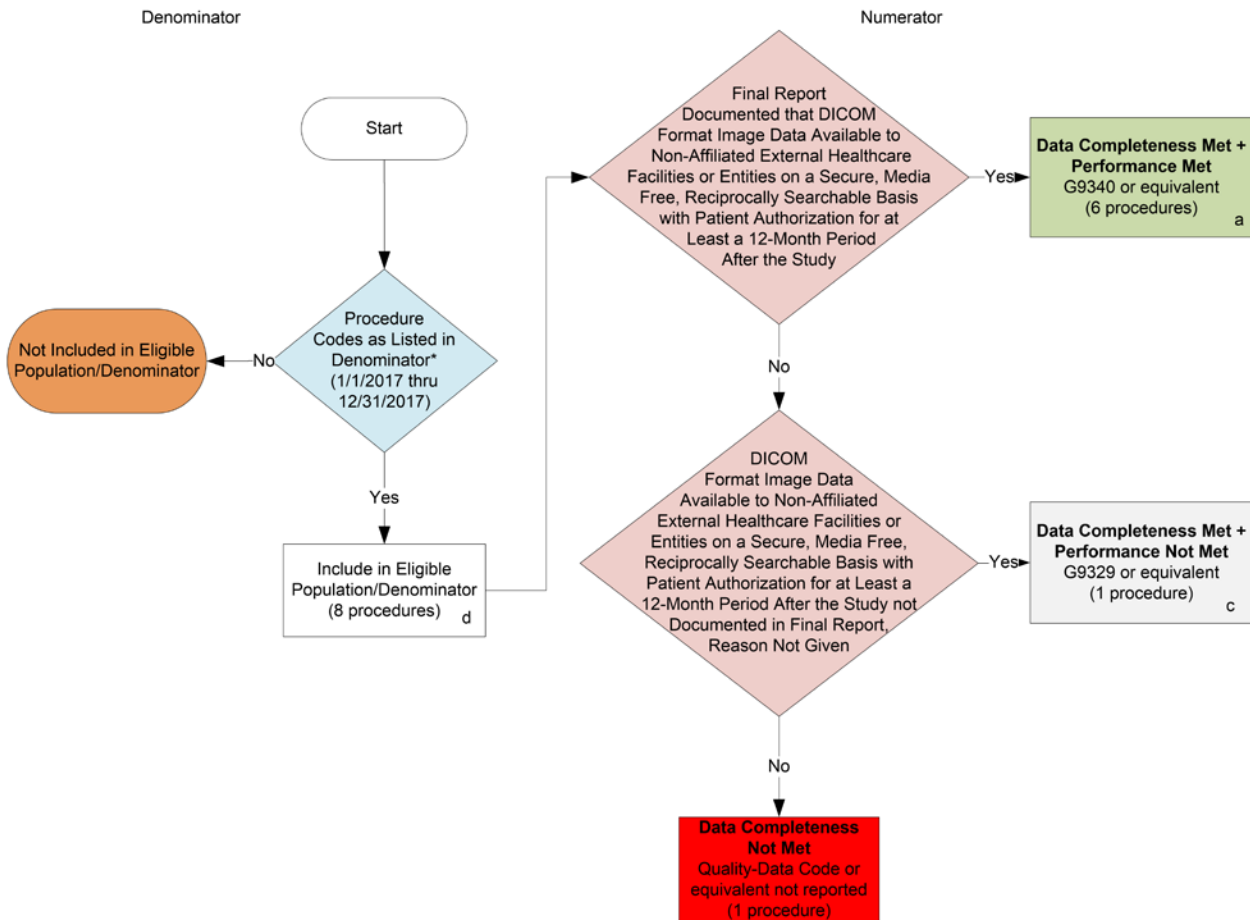
THE MEASURES AND SPECIFICATIONS ARE PROVIDED "AS IS" WITHOUT WARRANTY OF ANY KIND.

© 2014 American Board of Medical Specialties, American College of Radiology and American Medical Association. All Rights Reserved. Applicable FARS/DFARS Restrictions Apply to Government Use.

Limited proprietary coding is contained in the Measure specifications for convenience. Users of the proprietary code sets should obtain all necessary licenses from the owners of these code sets. The AMA, ABMS, ACR, the PCPI and its members disclaim all liability for use or accuracy of any Current Procedural Terminology (CPT®) or other coding contained in the specifications.

CPT® contained in the Measures specifications is copyright 2004-2016 American Medical Association. LOINC® copyright 2004-2016 Regenstrief Institute, Inc. SNOMED CLINICAL TERMS (SNOMED CT®) copyright 2004-2016 College of American Pathologists. All Rights Reserved.

2017 Registry Individual Measure Flow
#362: Optimizing Patient Exposure to Ionizing Radiation: Computed Tomography (CT) Images Available for Patient Follow-up and Comparison Purposes



SAMPLE CALCULATIONS:

Data Completeness=

Performance Met (a=6 procedures) + Performance Not Met (c=1 procedure) = 7 procedures = 87.50%
 Eligible Population / Denominator (d=8 procedures) = 8 procedures

Performance Rate=

Performance Met (a=6 procedures) = 6 procedures = 85.71%
 Data Completeness Numerator (7 procedures) = 7 procedures

* See the posted Measure Specification for specific coding and instructions to report this measure.

NOTE: Reporting Frequency: Procedure

CPT only copyright 2016 American Medical Association. All rights reserved.
 The measure diagrams were developed by CMS as a supplemental resource to be used in conjunction with the measure specifications. They should not be used alone or as a substitution for the measure specification.

v1

2017 Registry Individual Measure Flow

#362: Optimizing Patient Exposure to Ionizing Radiation: Computed Tomography (CT) Images Available for Patient Follow-up and Comparison Purposes

Please refer to the specific section of the Measure Specification to identify the Denominator and numerator information for use in reporting this Individual Measure.

1. Start with Denominator
2. Check Procedure:
 - a. If Procedure as Listed in the Denominator equals No, do not include in Eligible Population or Denominator. Stop Processing.
 - b. If Procedure as Listed in the Denominator equals Yes, include in the Eligible population or Denominator.
3. Denominator Population:
 - a. Eligible population or Denominator is all Eligible Patients in the Denominator. Denominator is represented as Denominator in the Sample Calculation listed at the end of this document. Letter d equals 8 procedures in the sample calculation.
4. Start Numerator
5. Check Final Report Documented that DICOM Format Image Data Available to Non-Affiliated External Healthcare Facilities or Entities on a Secure, Media Free, Reciprocally Searchable Basis with Patient Authorization for at Least a 12-Month Period After the Study:
 - a. If Final Report Documented that DICOM Format Image Data Available to Non-Affiliated External Healthcare Facilities or Entities on a Secure, Media Free, Reciprocally Searchable Basis with Patient Authorization for at Least a 12-Month Period After the Study equals Yes, include in Data Completeness Met and Performance Met.
 - b. Data Completeness Met and Performance Met letter is represented in the Data Completeness and Performance Rate in the Sample Calculation listed at the end of this document. Letter a equals 6 procedures in Sample Calculation.
 - a. If Final Report Documented that DICOM Format Image Data Available to Non-Affiliated External Healthcare Facilities or Entities on a Secure, Media Free, Reciprocally Searchable Basis with Patient Authorization for at Least a 12-Month Period After the Study equals No, proceed to Check DICOM Format Image Data Available to Non-Affiliated External Healthcare Facilities or Entities on a Secure, Media Free, Reciprocally Searchable Basis with Patient Authorization for at Least a 12-Month Period After the Study not Documented in Final Report, Reason Not Given.
6. Check DICOM Format Image Data Available to Non-Affiliated External Healthcare Facilities or Entities on a Secure, Media Free, Reciprocally Searchable Basis with Patient Authorization for at Least a 12-Month Period After the Study not Documented in Final Report, Reason Not Given:
 - a. If DICOM Format Image Data Available to Non-Affiliated External Healthcare Facilities or Entities on a Secure, Media Free, Reciprocally Searchable Basis with Patient Authorization for at Least a 12-Month Period After the Study not Documented in Final Report, Reason Not Given equals Yes, include in Data Completeness Met and Performance Not Met.

- b. Data Completeness Met and Performance Not Met letter is represented in the Data Completeness in the Sample Calculation listed at the end of this document. Letter c equals 1 procedure in the Sample Calculation.
 - c. If DICOM Format Image Data Available to Non-Affiliated External Healthcare Facilities or Entities on a Secure, Media Free, Reciprocally Searchable Basis with Patient Authorization for at Least a 12-Month Period After the Study not Documented in Final Report, Reason Not Given equals No, proceed to Data Completeness Not Met.
7. Check Data Completeness Not Met:
- a. If Data Completeness Not Met, the Quality Data Code or equivalent was not reported. 1 procedure has been subtracted from the data completeness numerator in sample calculation.

SAMPLE CALCULATIONS:

Data Completeness=

Performance Met (a=6 procedures) + Performance Not Met (c=1 procedure) = 7 procedures = 87.50%
 Eligible Population / Denominator (d=8 procedures) = 8 procedures

Performance Rate=

Performance Met (a=6 procedures) = 6 procedures = 85.71%
 Data Completeness Numerator (7 procedures) = 7 procedures