

Measure #291: Parkinson's Disease: Cognitive Impairment or Dysfunction Assessment – National Quality Strategy Domain: Effective Clinical Care

2017 OPTIONS FOR INDIVIDUAL MEASURES:
REGISTRY ONLY

MEASURE TYPE:
Process

DESCRIPTION:
All patients with a diagnosis of Parkinson's disease who were assessed for cognitive impairment or dysfunction in the last 12 months

INSTRUCTIONS:
This measure is to be reported a minimum of **once per performance period** for patients with a diagnosis of Parkinson's disease seen during the performance period. This measure may be reported by eligible clinicians who perform the quality actions described in the measure based on the services provided and the measure-specific denominator coding.

Measure Reporting:
The listed denominator criteria is used to identify the intended patient population. The numerator options included in this specification are used to submit the quality actions allowed by the measure. The quality-data codes listed do not need to be submitted for registry-based submissions; however, these codes may be submitted for those registries that utilize claims data.

DENOMINATOR:
All patients aged 18 years and older with a diagnosis of Parkinson's disease

Denominator Criteria (Eligible Cases):

Patients aged ≥ 18 years on date of encounter

AND

Diagnosis for Parkinson's disease (ICD-10-CM): G20

AND

Patient encounter during the performance period (CPT): 99201, 99202, 99203, 99204, 99205, 99212, 99213, 99214, 99215, 99304, 99305, 99306, 99307, 99308, 99309, 99310, 99324, 99325, 99326, 99327, 99328, 99334, 99335, 99336, 99337, 99341, 99342, 99343, 99344, 99345, 99347, 99348, 99349, 99350

WITHOUT

Telehealth Modifier: GQ, GT

NUMERATOR:
Patients who were assessed for cognitive impairment or dysfunction in the last 12 months

Numerator Options:

Performance Met:

Cognitive impairment or dysfunction assessed
(3720F)

OR

Performance Not Met:

Cognitive impairment or dysfunction was not
assessed, reason not otherwise specified (3720F
with 8P)

RATIONALE:
Parkinson's disease is associated with cognitive impairment. It is important to assess patients with Parkinson's disease on an annual basis with regard to their cognitive abilities. Clinically significant cognitive difficulties may be

present early on in the disease course, but dementia may emerge and be diagnosed later in the course of the disease. However, the insidious onset of cognitive impairment/dementia often occurs over a prolonged period of time. Emerging cognitive impairment has limited treatment, but is important to identify in terms of the patient's care and responsibilities within the home, socially, or in the work place.

Factor, S. Weiner, W. Parkinson's Disease: Diagnosis and Clinical Management . 2002

CLINICAL RECOMMENDATION STATEMENTS:

The Mini-Mental State Examination (MMSE) and the Cambridge Cognitive Examination (CAM Cog) should be considered as screening tools for dementia in patients with PD (Level B). AAN QSS (April 2006)

All veterans with PD should be reassessed for complications of PD (including, but not limited to functional status, excessive daytime somnolence, speech and swallowing difficulties, dementia, depression, and psychosis) at least on an annual basis. Cheng #10 (Reassessment for complications for PD) 2004

AAN QSS Mental (April 2006) Miyasaki JM, Shannon K, Voon V, Ravina B, Kleiner-Fisman G, Anderson K, Shulman LM, Gronseth G, Weiner WJ, Quality Standards Subcommittee of the American Academy of Neurology. Practice parameter: evaluation and treatment of depression, psychosis, and dementia in Parkinson disease (an evidence-based review): report of the Quality Standards Subcommittee of the American Academy of Neurology. Neurology 2006 Apr 11;66(7):996-1002

Cheng Eric, Siderowf Andrew, Swarztrauber Kari, Eisa Mahmood, Lee Martin and Vickrey Barbara. Development of Quality of Care Indicators for Parkinson's disease Movement Disorders Vol. 19, No.2, 2004 (P136-150) This measure may be used as an accountability measure.

COPYRIGHT:

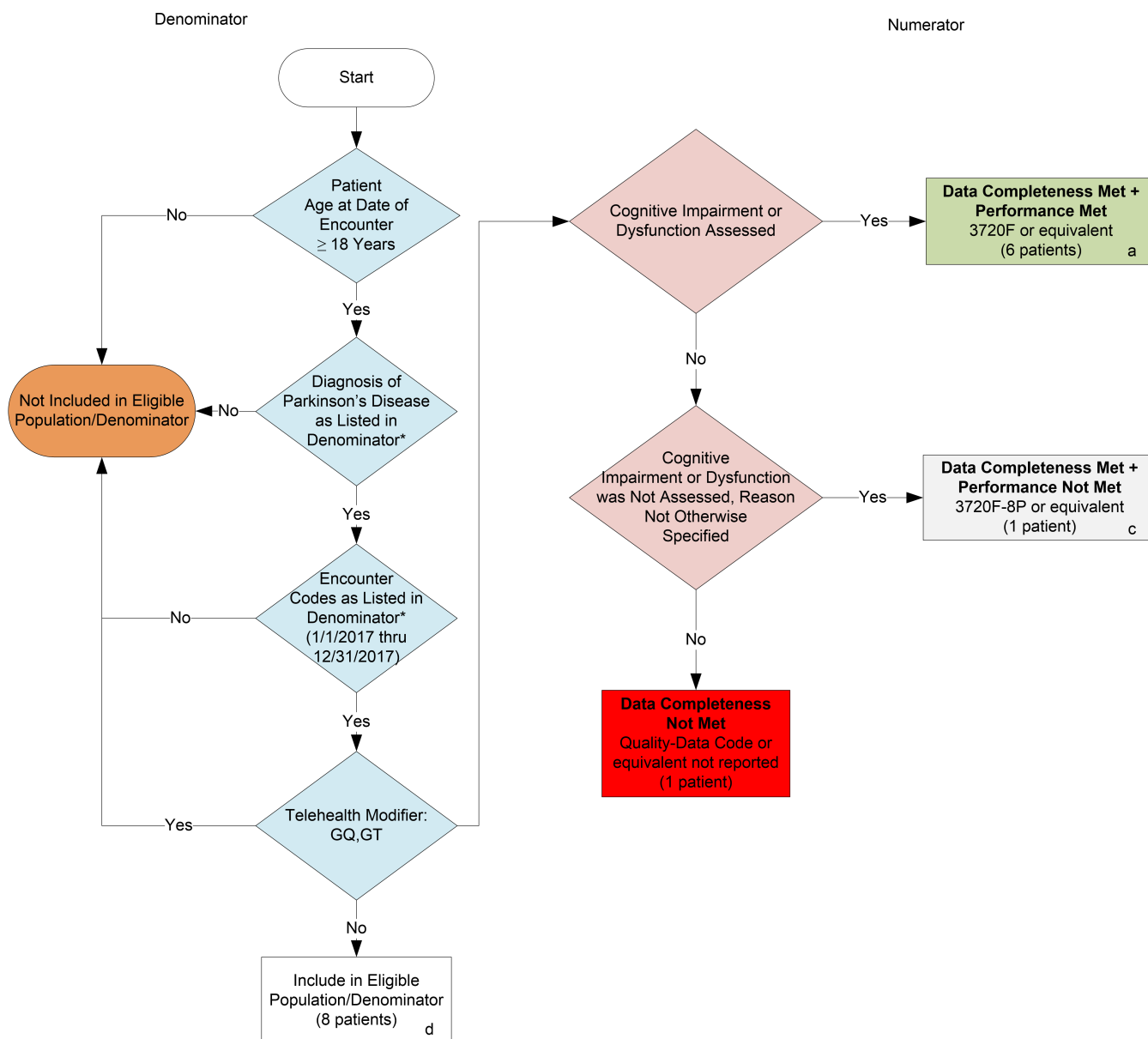
© 2015 American Academy of Neurology Institute All rights reserved.

Limited proprietary coding is contained in the measure specifications for convenience. Users of the proprietary coding sets should obtain all necessary licenses from the owners of these code sets. The AAN and its members disclaim all liability for use or accuracy of any Current Procedural Terminology (CPT®) or other coding contained in the specifications.

CPT ® is a registered trademark of the American Medical Association.

2017 Registry Individual Measure Flow

#291: Parkinson's Disease: Cognitive Impairment or Dysfunction Assessment



SAMPLE CALCULATIONS:

Data Completeness=

Performance Met (a=6 patients) + Performance Not Met (c=1 patient) = 7 patients = 87.50%
 Eligible Population / Denominator (d=8 patients) = 8 patients

Performance Rate=

Performance Met (a=6 patients) = 6 patients = 85.71%
 Data Completeness Numerator (7 patients) = 7 patients

* See the posted Measure Specification for specific coding and instructions to report this measure.

NOTE: Reporting Frequency: Patient-process

CPT only copyright 2016 American Medical Association. All rights reserved.
 The measure diagrams were developed by CMS as a supplemental resource to be used in conjunction with the measure specifications. They should not be used alone or as a substitution for the measure specification.

v1

2017 Registry Individual Measure Flow
#291: Parkinson's Disease: Cognitive Impairment or Dysfunction Assessment

Please refer to the specific section of the Measure Specification to identify the denominator and numerator information for use in reporting this Individual Measure.

1. Start with Denominator
2. Check Patient Age:
 - a. If the Age is greater than or equal to 18 years of age on Date of Service and equals No during the measurement period, do not include in Eligible Patient Population. Stop Processing.
 - b. If the Age is greater than or equal to 18 years of age on Date of Service and equals Yes during the measurement period, proceed to check Patient Diagnosis.
3. Check Patient Diagnosis:
 - a. If Diagnosis of Parkinson's Disease as Listed in the Denominator equals No, do not include in Eligible Patient Population. Stop Processing.
 - b. If Diagnosis of Parkinson's Disease as Listed in the Denominator equals Yes, proceed to check Current Encounter Performed.
4. Check Encounter Performed:
 - a. If Encounter as Listed in the Denominator equals No, do not include in Eligible Patient Population. Stop Processing.
 - b. If Encounter as Listed in the Denominator equals Yes, proceed to check Telehealth Modifier.
5. Check Telehealth Modifier:
 - a. If Telehealth Modifier equals Yes, do not include in Eligible Patient Population. Stop Processing.
 - b. If Telehealth Modifier equals No, include in Eligible Population.
6. Denominator Population:
 - a. Denominator population is all Eligible Patients in the denominator. Denominator is represented as Denominator in the Sample Calculation listed at the end of this document. Letter d equals 8 patients in the sample calculation.
7. Start Numerator
8. Check Cognitive Impairment or Dysfunction Assessed:
 - a. If Cognitive Impairment or Dysfunction Assessed equals Yes, include in Data Completeness Met and Performance Met.
 - b. Data Completeness Met and Performance Met is represented in the Data Completeness and Performance Rate in the Sample Calculation listed at the end of this document. Letter a equals 6 patients in Sample Calculation.

- c. If Cognitive Impairment or Dysfunction Assessed equals No, proceed to Cognitive Impairment or Dysfunction Assessed was Not Assessed, Reason Not Otherwise Specified.
9. Check Cognitive Impairment or Dysfunction Assessed was Not Assessed, Reason Not Otherwise Specified:
 - a. If Cognitive Impairment or Dysfunction Assessed was Not Assessed, Reason Not Otherwise Specified equals Yes, include in Data Completeness Met and Performance Not Met.
 - b. Data Completeness Met and Performance Not Met is represented in the Data Completeness in the Sample Calculation listed at the end of this document. Letter c equals 1 patient in the Sample Calculation.
 - c. If Cognitive Impairment or Dysfunction Assessed was Not Assessed, Reason Not Otherwise Specified equals No, proceed to Data Completeness Not Met.
10. Check Data Completeness Not Met:
 - a. If Data Completeness Not Met equals No, Quality Data Code or equivalent not reported. 1 patient has been subtracted from the data completeness numerator in the sample calculation.

SAMPLE CALCULATIONS:

Data Completeness=

Performance Met (a=6 patients) + Performance Not Met (c=1 patient) = 7 patients = 87.50%
 Eligible Population / Denominator (d=8 patients) = 8 patients

Performance Rate=

Performance Met (a=6 patients) = 6 patients = 85.71%
 Data Completeness Numerator (7 patients) = 7 patients