

Measure #141 (NQF 0563): Primary Open-Angle Glaucoma (POAG): Reduction of Intraocular Pressure (IOP) by 15% OR Documentation of a Plan of Care – National Quality Strategy Domain: Communication and Care Coordination

2017 OPTIONS FOR INDIVIDUAL MEASURES:
CLAIMS ONLY

MEASURE TYPE:
Outcome

DESCRIPTION:

Percentage of patients aged 18 years and older with a diagnosis of primary open-angle glaucoma (POAG) whose glaucoma treatment has not failed (the most recent IOP was reduced by at least 15% from the pre-intervention level) OR if the most recent IOP was not reduced by at least 15% from the pre-intervention level, a plan of care was documented within 12 months

INSTRUCTIONS:

This measure is to be reported a minimum of **once per performance reporting** for glaucoma patients seen during the **performance reporting**. It is anticipated that eligible clinicians who provide the primary management of patients with POAG will submit this measure.

Measure Reporting:

The listed denominator criteria is used to identify the intended patient population. The numerator quality-data codes included in this specification are used to submit the quality actions allowed by the measure. All measure-specific coding should be reported on the claim(s) representing the eligible encounter.

DENOMINATOR:

All patients aged 18 years and older with a diagnosis of primary open-angle glaucoma

Denominator Criteria (Eligible Cases):

Patients aged ≥ 18 years on date of encounter

AND

Diagnosis for primary open-angle glaucoma (ICD-10-CM): H40.1111, H40.1112, H40.1113, H40.1114, H40.1121, H40.1122, H40.1123, H40.1124, H40.1131, H40.1132, H40.1133, H40.1134, H40.1211, H40.1212, H40.1213, H40.1214, H40.1221, H40.1222, H40.1223, H40.1224, H40.1231, H40.1232, H40.1233, H40.1234, H40.151, H40.152, H40.153

AND

Patient encounter during the performance reporting (CPT): 92002, 92004, 92012, 92014, 99201, 99202, 99203, 99204, 99205, 99212, 99213, 99214, 99215, 99307, 99308, 99309, 99310, 99324, 99325, 99326, 99327, 99328, 99334, 99335, 99336, 99337

WITHOUT

Telehealth Modifier: GQ, GT

NUMERATOR:

Patients whose glaucoma treatment has not failed (the most recent IOP was reduced by at least 15% from the pre-intervention level) OR if the most recent IOP was not reduced by at least 15% from the pre-intervention level, a plan of care was documented within 12 months

Definitions:

Plan of Care – May include: Recheck of IOP at specified time, change in therapy, perform additional diagnostic evaluations, monitoring per patient decisions or health system reasons, and/or referral to a specialist.

Plan to Recheck – In the event certain factors do not allow for the IOP to be measured (e.g., patient has an eye infection) but the physician has a plan to measure the IOP at the next visit; the plan of care code should be reported.

Glaucoma Treatment Not Failed – The most recent IOP was reduced by at least 15% in the affected eye or if both eyes were affected, the reduction of at least 15% occurred in both eyes.

Numerator Instructions: Pre-Intervention Level – The patient's IOP in the affected eye prior to the initiation of therapy. For patients who have just begun management of their POAG, i.e. a newly diagnosed patient or a patient recently transferred to the care of the physician, a provider can meet the measure's performance requirements by documenting a plan of care and reporting CPT II 0517F. Patients whose POAG is well managed are assumed to have met the requirement to reduce their IOP by greater than or equal to 15% and should report CPT II 3284F.

Numerator Quality-Data Coding Options:

Intraocular Pressure (IOP) Reduced Greater than or Equal to 15% Pre-Intervention Level

Performance Met: CPT II 3284F

Intraocular pressure (IOP) reduced by a value of greater than or equal to 15% from the pre-intervention level

OR

Intraocular Pressure (IOP) Reduced Less than 15% Pre-Intervention Level with Plan of Care

(Two CPT II codes [0517F & 3285F] are required on the claim form to submit this numerator option)

Performance Met: CPT II 0517F

Glaucoma plan of care documented

AND

CPT II 3285F

Intraocular pressure (IOP) reduced by a value less than 15% from the pre-intervention level

OR

Glaucoma Plan of Care not Documented, Reason not Otherwise Specified

(Two CPT II codes [0517F-8P & 3285F] are required on the claim form to submit this numerator option)

Append a reporting modifier (8P) to CPT Category II code 0517F to report circumstances when the action described in the numerator is not performed and the reason is not otherwise specified.

Performance Not Met: CPT II 0517F **with 8P**

Glaucoma plan of care not documented, reason not otherwise specified

AND

CPT II 3285F

Intraocular pressure (IOP) reduced by a value less than 15% from the pre-intervention level

OR

IOP Measurement not Documented, Reason not Otherwise Specified

(One CPT II code [3284F-8P] is required on the claim form to submit this numerator option)

Append a reporting modifier (8P) to CPT Category II code 3284F to report circumstances when the action described in the numerator is not performed and the reason is not otherwise specified.

Performance Not Met: CPT II 3284F **with 8P**

IOP measurement not documented, reason not otherwise specified

RATIONALE:

- 1) Scientific basis for intraocular pressure (IOP) control as outcomes measure (intermediate)
Analyses of results of several randomized clinical trials all demonstrate that reduction of IOP of at least 18% (EMGT, CIGTS, AGIS, CNTGS) reduces the rate of worsening of visual fields by at least 40%. The various studies, however, achieved different levels of mean IOP lowering in realizing their benefit in patient outcomes, ranging from 18% in the "normal pressure" subpopulation of EMGT to 42% in the CIGTS study. (Level I studies) As such, an appropriate "failure" indicator is to NOT achieve at least a 15% IOP reduction. The rationales for a failure indicator are that 1) the results of different studies can lead experienced clinicians to

believe that different levels of IOP reduction are appropriate; 2) to minimize the impact of adverse selection for those patients whose IOPs are more difficult to control; and 3) because each patient's clinical course may require IOP reduction that may vary from 18 to 40+%.

In addition, "...several population based studies have demonstrated that the prevalence of POAG as well as the incidence of POAG, increases as the level of IOP increases. These studies provide strong evidence that IOP plays an important role in the neuropathy of POAG. Furthermore, studies have demonstrated that reduction in the level of IOP lessens the risk of visual field progression in open-angle glaucoma. In addition, treated eyes that have a greater IOP fluctuation are at increased risk of progression.

Intraocular pressure is the intermediate outcome of therapy used by the FDA for approval of new drugs and devices and, as noted above, has been shown to be directly related to ultimate patient outcomes of vision loss. As such, failure to achieve minimal pressure lowering, absent an appropriate plan of care to address the situation, would constitute performance whose improvement would directly benefit patients with POAG.

2) Evidence for gap in care

Based on studies in the literature reviewing documentation of IOP achieved under care, the gap could be as great as 50% or more in the community of ophthalmologists and optometrists treating patients with primary open-angle glaucoma. Based on loose criteria for control, IOP was controlled in 66% of follow-up visits for patients with mild glaucoma and 52% of visits for patients with moderate to severe glaucoma.

Another study of a single comprehensive insurance plan suggested that a large proportion of individuals felt to require treatment for glaucoma or suspect glaucoma are falling out of care and are being monitored at rates lower than expected from recommendations of published guidelines.

CLINICAL RECOMMENDATION STATEMENTS:

The goal of treatment is to maintain the IOP in a range at which visual field loss is unlikely to significantly reduce a patient's health-related quality of life over his or her lifetime. (II+, moderate quality, discretionary recommendation)

The estimated upper limit of this range is considered the "target pressure." The initial target pressure is an estimate and a means toward the ultimate goal of protecting the patient's vision. The target pressure should be individualized and may need adjustment further down or even up during the course of the disease. (III, insufficient quality, discretionary recommendation)

When initiating therapy, the ophthalmologist assumes that the measured pretreatment pressure range contributed to optic nerve damage and is likely to cause additional damage in the future. Factors to consider when choosing a target pressure include the stage of overall glaucoma damage as determined by the degree of structural optic nerve injury and/or functional visual field loss, baseline IOP at which damage occurred, age of patient, and additional risk factors (e.g., central corneal thickness (CCT), life expectancy, prior rate of progression). Lowering the pretreatment IOP by 25% or more has been shown to slow progression of POAG.

Choosing a lower target IOP can be justified if there is more severe optic nerve damage, if the damage is progressing rapidly, or if other risk factors such as family history, age, or disc hemorrhages are present.

Prum BE Jr, Rosenberg LF, Gedde SJ, et al. Primary Open-Angle Glaucoma Preferred Practice Pattern® Guidelines. *Ophthalmology* 2016;123:P41-P111.

The intent of this measure is to have this indicator apply to both optometrists and ophthalmologists (and any other physician who provides glaucoma care); the use of "ophthalmologists" only in the preceding verbatim section reflects the wording in the American Academy of Ophthalmology Preferred Practice pattern.

COPYRIGHT:

The Measures are not clinical guidelines, do not establish a standard of medical care, and have not been tested for all potential applications.

The Measures, while copyrighted, can be reproduced and distributed, without modification, for noncommercial purposes, e.g., use by health care providers in connection with their practices. Commercial use is defined as the sale,

license, or distribution of the Measures for commercial gain, or incorporation of the Measures into a product or service that is sold, licensed or distributed for commercial gain.

Commercial uses of the Measures require a license agreement between the user and the American Medical Association (AMA), [on behalf of the Physician Consortium for Performance Improvement® (PCPI®)] or the American Academy of Ophthalmology (AAO). Neither the AMA, AAO, PCPI, nor its members shall be responsible for any use of the Measures.

The AMA's and PCPI's significant past efforts and contributions to the development and updating of the Measures is acknowledged. AAO is solely responsible for the review and enhancement ("Maintenance") of the Measures as of May 15, 2014.

AAO encourages use of the Measures by other health care professionals, where appropriate.

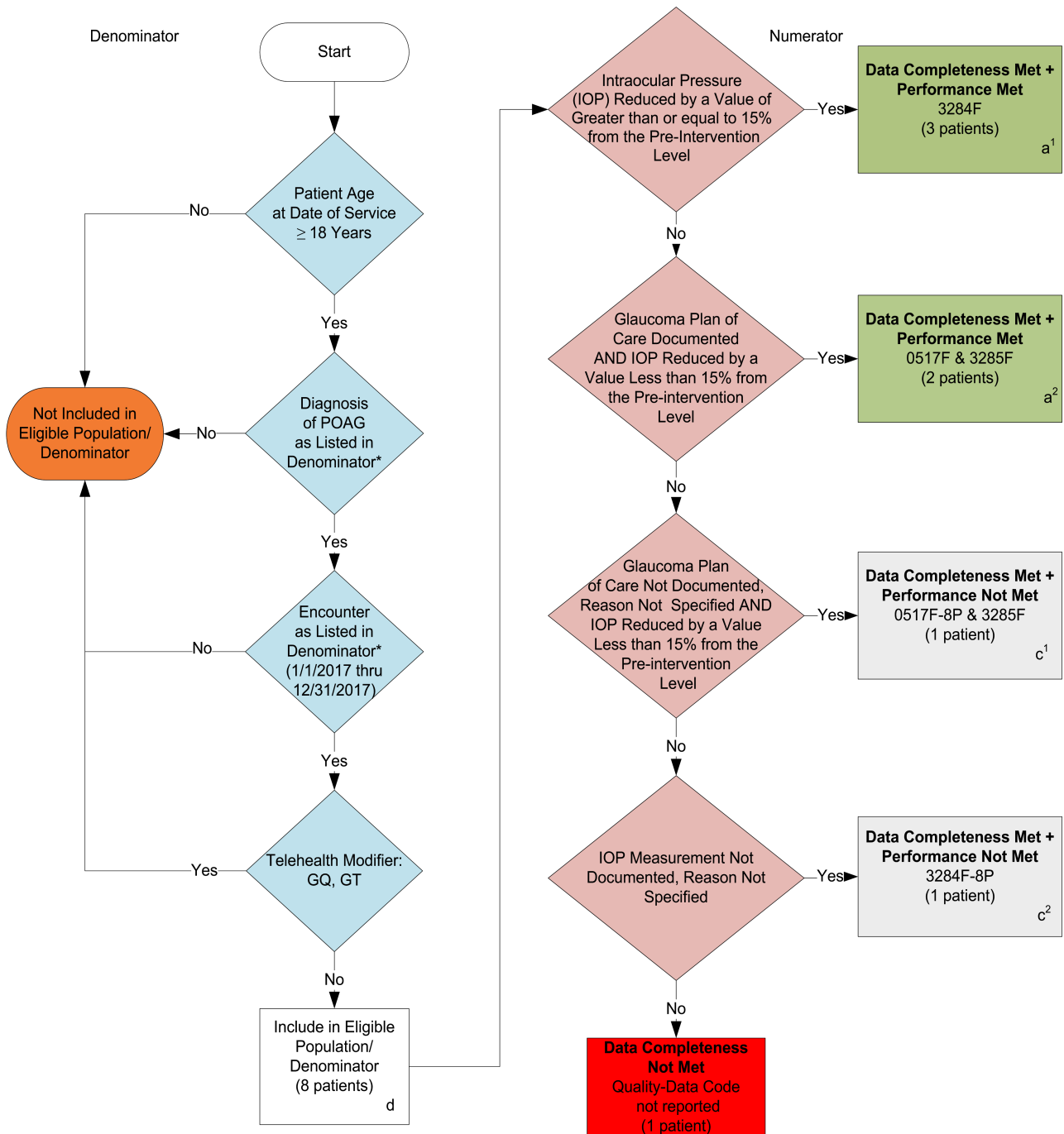
THE MEASURES AND SPECIFICATIONS ARE PROVIDED "AS IS" WITHOUT WARRANTY OF ANY KIND.

© 2016 American Medical Association and American Academy of Ophthalmology. All Rights Reserved. Applicable FARS/DFARS Restrictions Apply to Government Use.

Limited proprietary coding is contained in the Measure specifications for convenience. Users of the proprietary code sets should obtain all necessary licenses from the owners of these code sets. The AMA, AAO, the PCPI and its members disclaim all liability for use or accuracy of any Current Procedural Terminology (CPT®) or other coding contained in the specifications.

CPT® contained in the Measures specifications is copyright 2004-2016 American Medical Association. All Rights Reserved.

2017 Claims Individual Measure Flow
#141 NQF #0563: Primary Open-Angle Glaucoma (POAG):
Reduction of Intraocular Pressure (IOP) by 15% OR Documentation of a Plan of Care



SAMPLE CALCULATIONS:

Data Completeness=

Performance Met ($a^1+a^2=5$ patients) + Performance Not Met ($c^1+c^2=2$ patients) = 7 patients = **87.50%**
 Eligible Population / Denominator ($d=8$ patients) = 8 patients

Performance Rate=

Performance Met ($a^1+a^2=5$ patients) = 5 patients = **71.43%**
 Data Completeness Numerator (7 patients) = 7 patients

*See the posted Measure Specification for specific coding and instructions to report this measure.

NOTE: Reporting Frequency: Patient-process

CPT only copyright 2016 American Medical Association. All rights reserved.
 The measure diagrams were developed by CMS as a supplemental resource to be used in conjunction with the measure specifications. They should not be used alone or as a substitution for the measure specification.

v1

¶2017 Claims Individual Measure Flow

#141 NQF #0563: Primary Open-Angle Glaucoma (POAG): Reduction of Intraocular Pressure (IOP) by 15% OR Documentation of a Plan of Care

Please refer to the specific section of the Measure Specification to identify the denominator and numerator information for use in reporting this Individual Measure.

1. Start with Denominator
2. Check Patient Age:
 - a. If the Age is greater than or equal to 18 years of age on Date of Service and equals No during the measurement period, do not include in Eligible Patient Population. Stop Processing.
 - b. If the Age is greater than or equal to 18 years of age on Date of Service and equals Yes during the measurement period, proceed to Check Patient Diagnosis.
3. Check Patient Diagnosis:
 - a. If Diagnosis of POAG as Listed in the Denominator equals No, do not include in Eligible Patient Population. Stop Processing.
 - b. If Diagnosis of POAG as Listed in the Denominator equals Yes, proceed to Check Encounter Performed.
4. Check Encounter Performed:
 - a. If Encounter as Listed in the Denominator equals No, do not include in Eligible Patient Population. Stop Processing.
 - b. If Encounter as Listed in the Denominator equals Yes, include in the Eligible population.
5. Denominator Population:
 - a. Denominator population is all Eligible Patients in the denominator. Denominator is represented as Denominator in the Sample Calculation listed at the end of this document. Letter d equals 8 patients in the sample calculation.
6. Start Numerator
7. Check Intraocular Pressure (IOP) Reduced by a Value of Greater than or equal to 15% from the Pre-Intervention Level:
 - a. If Intraocular Pressure (IOP) Reduced by a Value of Greater than or equal to 15% from the Pre-Intervention Level equals Yes, include in Data Completeness Met and Performance Met.
 - b. Reporting Met and Performance Met letter is represented in the Data Completeness and Performance Rate in the Sample Calculation listed at the end of this document. Letter a1 equals 3 patients in Sample Calculation.
 - c. If Intraocular Pressure (IOP) Reduced by a Value of Greater than or equal to 15% from the Pre-Intervention Level equals No, proceed to Glaucoma Plan of Care Documented AND IOP Reduced by a Value Less than 15% from the Pre-intervention Level.
8. Check Glaucoma Plan of Care Documented AND IOP Reduced by a Value Less than 15% from the Pre-intervention Level:

- a. If Glaucoma Plan of Care Documented AND IOP Reduced by a Value Less than 15% from the Pre-intervention Level equals Yes, include in Data Completeness Met and Performance Met.
 - b. Data Completeness Met and Performance Met letter is represented in the Data Completeness and Performance Rate in the Sample Calculation listed at the end of this document. Letter a2 equals 2 patients in Sample Calculation.
 - c. If Glaucoma Plan of Care Documented AND IOP Reduced by a Value Less than 15% from the Pre-intervention Level equals No, proceed to Glaucoma Plan of Care Not Documented, Reason Not Specified AND IOP Reduced by a Value Less than 15% from the Pre-intervention Level.
9. Check Glaucoma Plan of Care Not Documented, Reason Not Specified AND IOP Reduced by a Value Less than 15% from the Pre-intervention Level:
 - a. If Glaucoma Plan of Care Not Documented, Reason Not Specified AND IOP Reduced by a Value Less than 15% from the Pre-intervention Level equals Yes, include in Data Completeness Met and Performance Not Met.
 - b. Data Completeness Met and Performance Not Met letter is represented in the Data Completeness in the Sample Calculation listed at the end of this document. Letter c1 equals 1 patient in the Sample Calculation.
 - c. If Glaucoma Plan of Care Not Documented, Reason Not Specified AND IOP Reduced by a Value Less than 15% from the Pre-intervention Level equals No, proceed to IOP Measurement Not Documented, Reason Not Specified.
10. Check IOP Measurement Not Documented, Reason Not Specified:
 - a. If IOP Measurement Not Documented, Reason Not Specified equals Yes, include in the Data Completeness Met and Performance Not Met.
 - b. Data Completeness Met and Performance Not Met letter is represented in the Data Completeness in the Sample Calculation listed at the end of this document. Letter c2 equals 1 patient in the Sample Calculation.
 - c. If IOP Measurement Not Documented, Reason Not Specified equals No, proceed to Data Completeness Not Met.
11. Check Data Completeness Not Met:
 - a. If Data Completeness Not Met equals No, Quality Data Code not reported. 1 patient has been subtracted from the data completeness numerator in the sample calculation.

SAMPLE CALCULATIONS:

Data Completeness=

$$\frac{\text{Performance Met (a}^1\text{+a}^2\text{=5 patients)} + \text{Performance Not Met (c}^1\text{+c}^2\text{=2 patients)}}{\text{Eligible Population / Denominator (d=8 patients)}} = \frac{7 \text{ patients}}{8 \text{ patients}} = 87.50\%$$

Performance Rate=

$$\frac{\text{Performance Met (a}^1\text{+a}^2\text{=5 patients)}}{\text{Data Completeness Numerator (7 patients)}} = \frac{5 \text{ patients}}{7 \text{ patients}} = 71.43\%$$