

Measure #109: Osteoarthritis (OA): Function and Pain Assessment – National Quality Strategy
Domain: Person and Caregiver-Centered Experience and Outcomes

2017 OPTIONS FOR INDIVIDUAL MEASURES:
REGISTRY ONLY

MEASURE TYPE:
Process

DESCRIPTION:
Percentage of patient visits for patients aged 21 years and older with a diagnosis of osteoarthritis (OA) with assessment for function and pain

INSTRUCTIONS:
This measure is to be reported at each denominator eligible visit occurring during the performance period for patients with osteoarthritis seen during the performance period. This measure may be reported by eligible clinicians who perform the quality actions described in the measure based on the services provided and the measure-specific denominator coding.

Measure Reporting:
The listed denominator criteria is used to identify the intended patient population. The numerator options included in this specification are used to submit the quality actions allowed by the measure. The quality-data codes listed do not need to be submitted for registry-based submissions; however, these codes may be submitted for those registries that utilize claims data.

DENOMINATOR:
All patient visits for patients aged 21 years and older with a diagnosis of OA

Denominator Criteria (Eligible Cases):

Patients aged ≥ 21 years on date of encounter

AND

Diagnosis for osteoarthritis (OA) (ICD-10-CM): M15.0, M15.1, M15.2, M15.3, M15.4, M15.8, M15.9, M16.0, M16.10, M16.11, M16.12, M16.2, M16.30, M16.31, M16.32, M16.4, M16.50, M16.51, M16.52, M16.6, M16.7, M16.9, M17.0, M17.10, M17.11, M17.12, M17.2, M17.30, M17.31, M17.32, M17.4, M17.5, M17.9, M18.0, M18.10, M18.11, M18.12, M18.2, M18.30, M18.31, M18.32, M18.4, M18.50, M18.51, M18.52, M18.9, M19.011, M19.012, M19.019, M19.021, M19.022, M19.029, M19.031, M19.032, M19.039, M19.041, M19.042, M19.049, M19.071, M19.072, M19.079, M19.111, M19.112, M19.119, M19.121, M19.122, M19.129, M19.131, M19.132, M19.139, M19.141, M19.142, M19.149, M19.171, M19.172, M19.179, M19.211, M19.212, M19.219, M19.221, M19.222, M19.229, M19.231, M19.232, M19.239, M19.241, M19.242, M19.249, M19.271, M19.272, M19.279, M19.90, M19.91, M19.92, M19.93

AND

Patient encounter during the performance period (CPT): 99201, 99202, 99203, 99204, 99205, 99212, 99213, 99214, 99215

NUMERATOR:
Patient visits with assessment for level of function and pain documented (may include the use of a standardized scale or the completion of an assessment questionnaire, such as an SF-36, AAOS Hip & Knee Questionnaire)

NUMERATOR NOTE: For the purposes of this measure, the method for assessing function and pain is left up to the discretion of the individual eligible clinician and based on the needs of the patient. The assessment may be done via a validated instrument (though one is not required) that measures pain and various

functional elements including a patient's ability to perform activities of daily living (ADLs).

Numerator Options:

Performance Met:

Osteoarthritis symptoms and functional status assessed (may include the use of a standardized scale or the completion of an assessment questionnaire, such as the SF-36, AAOS Hip & Knee Questionnaire) (1006F)

OR

Performance Not Met:

Osteoarthritis symptoms and functional status not assessed, reason not otherwise specified (1006F with 8P)

RATIONALE:

Osteoarthritis can be a debilitating condition. An assessment of patient symptoms and functional status is important as it serves as the basis for making treatment modifications, which in turn, assists in improving the patient's quality of life.

CLINICAL RECOMMENDATION STATEMENTS:

Any persistent pain that has an impact on physical function, psychosocial function, or other aspects of quality of life should be recognized as a significant problem. (AGS; IIA Recommendation)

Control of pain and maintenance of activity correlate well with satisfactory quality of life. If the patient is not satisfied with the outcome due to continued pain and limitation of activity, more aggressive intervention may be warranted. (AAOS, 2003)

COPYRIGHT:

The Measures are not clinical guidelines, do not establish a standard of medical care, and have not been tested for all potential applications.

The Measures, while copyrighted, can be reproduced and distributed, without modification, for noncommercial purposes, eg, use by health care providers in connection with their practices. Commercial use is defined as the sale, license, or distribution of the Measures for commercial gain, or incorporation of the Measures into a product or service that is sold, licensed or distributed for commercial gain.

Commercial uses of the Measures require a license agreement between the user and the American Medical Association (AMA), [on behalf of the Physician Consortium for Performance Improvement® (PCPI®)] or American Academy of Orthopaedic Surgeons (AAOS). Neither the AMA, AAOS, PCPI, nor its members shall be responsible for any use of the Measures.

The AMA's, PCPI's and National Committee for Quality Assurance's significant past efforts and contributions to the development and updating of the Measures is acknowledged. AAOS is solely responsible for the review and enhancement ("Maintenance") of the Measures as of August 11, 2014.

AAOS encourages use of the Measures by other health care professionals, where appropriate.

THE MEASURES AND SPECIFICATIONS ARE PROVIDED "AS IS" WITHOUT WARRANTY OF ANYKIND.

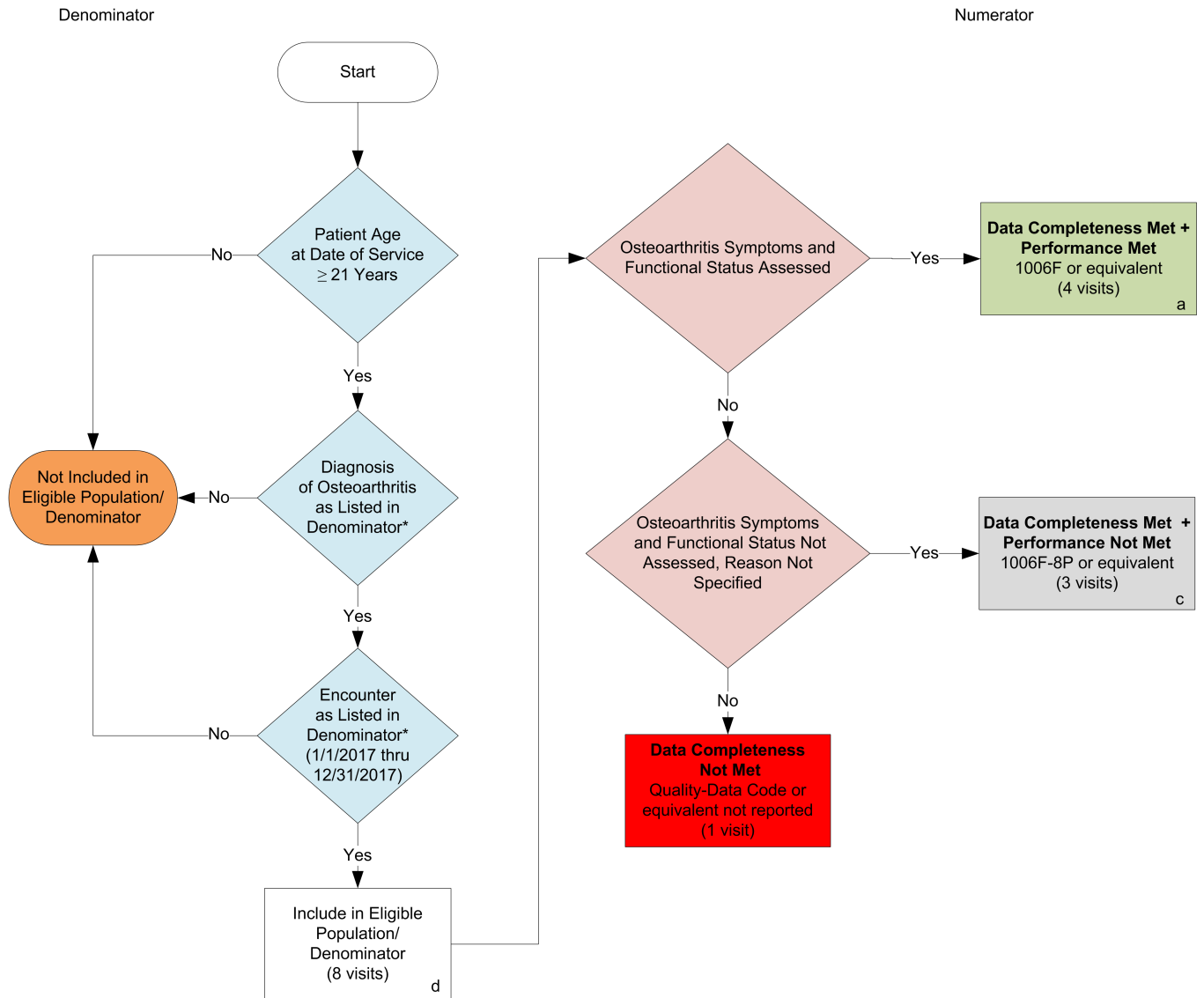
© 2015 American Medical Association and American Academy of Orthopaedic Surgeons. All Rights Reserved.
Applicable FARS/DFARS Restrictions Apply to Government Use.

Limited proprietary coding is contained in the Measure specifications for convenience. Users of the proprietary code sets should obtain all necessary licenses from the owners of these code sets. The AMA, AAOS, the PCPI and its members disclaim all liability for use or accuracy of any Current Procedural Terminology (CPT®) or other coding

contained in the specifications.

CPT® contained in the Measures specifications is copyright 2004-2016 American Medical Association. LOINC® copyright 2004-2016 Regenstrief Institute, Inc. SNOMED CLINICAL TERMS (SNOMED CT®) copyright 2004-2016 College of American Pathologists. All Rights Reserved.

2017 Registry Individual Measure Flow #109: Osteoarthritis (OA): Function and Pain Assessment



SAMPLE CALCULATIONS:

Data Completeness=

$$\frac{\text{Performance Met (a=4 visits)} + \text{Performance Not Met (c=3 visits)}}{\text{Eligible Population / Denominator (d=8 visits)}} = \frac{7 \text{ visits}}{8 \text{ visits}} = 87.50\%$$

Performance Rate=

$$\frac{\text{Performance Met (a=4 visits)}}{\text{Data Completeness Numerator (7 visits)}} = \frac{4 \text{ visits}}{7 \text{ visits}} = 57.14\%$$

*See the posted Measure Specification for specific coding and instructions to report this measure.

NOTE: Reporting Frequency: Visit

CPT only copyright 2016 American Medical Association. All rights reserved.
The measure diagrams were developed by CMS as a supplemental resource to be used
in conjunction with the measure specifications. They should not be used alone or as a
substitution for the measure specification.

v1

2017 Registry Individual Measure Flow
#109: Osteoarthritis (OA): Function and Pain Assessment

Please refer to the specific section of the Measure Specification to identify the denominator and numerator information for use in reporting this Individual Measure.

1. Start with Denominator
2. Check Patient Age:
 - a. If the Age is greater than or equal to 21 years of age on Date of Service and equals No during the measurement period, do not include in Eligible Patient Population. Stop Processing.
 - b. If the Age is greater than or equal to 21 years of age on Date of Service and equals Yes during the measurement period, proceed to check Patient Diagnosis.
3. Check Patient Diagnosis:
 - a. If Diagnosis of Osteoarthritis as Listed in Denominator equals No, do not include in Eligible Patient Population. Stop Processing.
 - b. If Diagnosis of Osteoarthritis as Listed in Denominator equals Yes, proceed to check Encounter Performed.
4. Check Encounter Performed:
 - a. If Encounter as Listed in the Denominator equals No, do not include in Eligible Patient Population. Stop Processing.
 - b. If Encounter as Listed in the Denominator equals Yes, include in the Eligible population.
5. Denominator Population:
 - a. Denominator population is all Eligible Patients in the denominator. Denominator is represented as Denominator in the Sample Calculation listed at the end of this document. Letter d equals 8 visits in the sample calculation.
6. Start Numerator
7. Check Osteoarthritis Symptoms and Functional Status Assessed:
 - a. If Osteoarthritis Symptoms and Functional Status Assessed equals Yes, include in Data Completeness Met and Performance Met.
 - b. Data Completeness Met and Performance Met letter is represented in the Data Completeness and Performance Rate in the Sample Calculation listed at the end of this document. Letter a equals 4 visits in Sample Calculation.
 - c. If Osteoarthritis Symptoms and Functional Status Assessed equals No, proceed to Osteoarthritis Symptoms and Functional Status Not Assessed, Reason Not Specified.
8. Check Osteoarthritis Symptoms and Functional Status Not Assessed, Reason Not Specified:
 - a. If Osteoarthritis Symptoms and Functional Status Not Assessed, Reason Not Otherwise Specified

equals Yes, include in Data Completeness Met and Performance Not Met.

- b. Data Completeness Met and Performance Not Met letter is represented in the Data Completeness in the Sample Calculation listed at the end of this document. Letter c equals 3 visits in the Sample Calculation.
- c. If Osteoarthritis Symptoms and Functional Status Not Assessed, Reason Not Specified equals No, proceed to Data Completeness Not Met

9. Check Data Completeness Not Met

- a. If Data Completeness Not Met equals No, Quality Data Code or equivalent not reported. 1 visit has been subtracted from the data completeness numerator in the sample calculation.

SAMPLE CALCULATIONS:

Data Completeness=

Performance Met (a=4 visits) + Performance Not Met (c=3 visits) = 7 visits = 87.50%
Eligible Population / Denominator (d=8 visits) = 8 visits

Performance Rate=

Performance Met (a=4 visits) = 4 visits = 57.14%
Data Completeness Numerator (7 visits) = 7 visits