

Quality ID #112 (CBE 2372): Breast Cancer Screening

2025 COLLECTION TYPE: **MEDICARE PART B CLAIMS – MIPS VALUE PATHWAYS (MVP) REPORTING ONLY**

MEASURE TYPE: Process

DESCRIPTION:
Percentage of women 40 - 74 years of age who had a mammogram to screen for breast cancer in the 27 months prior to the end of the measurement period.

INSTRUCTIONS:
This measure is to be submitted a minimum of **once per performance period** for female patients seen during the performance period. There is no diagnosis associated with this measure. The patient should either be screened for breast cancer on the date of service OR there should be documentation that the patient was screened for breast cancer at least once within **27 months prior to the end of the performance period**. Performance for this measure is not limited to the performance period. This measure may be submitted by Merit-based Incentive Payment System (MIPS) eligible clinicians who perform the quality actions described in the measure based on services provided and the measure-specific denominator coding.

NOTE: Patient encounters for this measure conducted via telehealth (including but not limited to encounters coded with GQ, GT, POS 02, POS 10) are allowable. This measure specification is only available for MIPS Value Pathways (MVP) reporting and is not available for traditional MIPS reporting. Please note that effective January 1, 2025, while a measure may be denoted as telehealth eligible, specific denominator codes within the encounter may no longer be eligible due to changes outlined in the CY 2024 PFS Final Rule List of Medicare Telehealth Services.

Measure Submission Type:

Measure data may be submitted by individual MIPS eligible clinicians using Medicare Part B claims. The listed denominator criteria are used to identify the intended patient population. The numerator quality data codes included in this specification are used to submit the quality actions allowed by the measure on the claim form(s). All measure-specific coding should be submitted on the claim(s) representing the denominator eligible encounter and selected numerator option.

DENOMINATOR:
Women 41 - 74 years of age with a visit during the measurement period

DENOMINATOR NOTE: The intent of the measure is that starting at age 40 women should have one or more mammograms every 24 months with a 3 month grace period. The intent of the exclusion for individuals age 66 and older residing in long-term care facilities, including nursing homes, is to exclude individuals who may have limited life expectancy and increased frailty where the benefit of the process may not exceed the risks. This exclusion is not intended as a clinical recommendation regarding whether the measures process is inappropriate for specific populations, instead the exclusion allows clinicians to engage in shared decision making with patients about the benefits and risks of screening when an individual has limited life expectancy.

*Signifies that this CPT Category I code is a non-covered service under the Physician Fee Schedule (PFS). These non-covered services will not be counted in the denominator population for Medicare Part B claims measures.

Denominator Criteria (Eligible Cases):
Patients 41 to 74 years of age at the beginning of the measurement period

AND

Patient encounter during the performance period (CPT or HCPCS): 98000, 98001, 98002, 98003, 98004, 98005, 98006, 98007, 98008, 98009, 98010, 98011, 98012, 98013, 98014, 98015, 98016, 98980, 99202, 99203, 99204, 99205, 99212, 99213, 99214, 99215, 99341, 99342, , 99344, 99345, 99347, 99348, 99349, 99350, 99386*, 99387*, 99396*, 99397*, 99421, 99422, 99423, 99457, G0402, G0438, G0439, G2250, G2251, G2252

NUMERATOR:

Women with one or more mammograms any time on or between October 1 two years prior to the measurement period and the end of the measurement period

Definition:

Mammography screening is defined by a bilateral screening (both breasts) of breast tissue. If only one breast is present, unilateral screening (one side) must be performed on the remaining breast.

Numerator Instructions:

This measure evaluates primary screening. Do not count biopsies, breast ultrasounds, or MRIs because they are not appropriate methods for primary breast cancer screening.

Please note the measure may include screenings performed outside the age range of patients referenced in the initial population. Screenings that occur prior to the measurement year are valid to meet measure criteria.

NUMERATOR NOTE: Patient reported mammograms, when recorded in the medical record, are acceptable for meeting the numerator.

To assess the age for exclusions, the patient's age on the date of the encounter should be used.

Numerator Quality Data Coding Options:

Mammogram not Performed, Patient not Eligible

Denominator Exclusion: G9708:

Women who had a bilateral mastectomy or who have a history of a bilateral mastectomy or for whom there is evidence of a right and a left unilateral mastectomy

OR

Patient receiving Hospice Services, Patient Not Eligible

Denominator Exclusion: G9709:

Hospice services used by patient any time during the measurement period

OR

Patient receiving Palliative Care Services, Patient Not Eligible

Denominator Exclusion: G9992:

Palliative care services used by patient any time during the measurement period

OR

Patient age 66 or older in Institutional Special Needs Plans (SNP) or residing in long-term care facility, Patient Not Eligible

Denominator Exclusion: G9898:

Patients age 66 or older in Institutional Special Needs Plans (SNP) or residing in long term care with POS code 32, 33, 34, 54, or 56 for more than 90 consecutive days during the measurement period

OR

Patient with Frailty AND Medication for Dementia, Patient Not Eligible

Denominator Exclusion: G2098:

Patients 66 years of age and older with at least one claim/encounter for frailty during the measurement period AND a dispensed medication for dementia during

the measurement period or the year prior to the measurement period

OR

Patient with Frailty AND Advanced Illness, Patient Not Eligible

Denominator Exclusion: G2099:

Patients 66 years of age and older with at least one claim/encounter for frailty during the measurement period AND an advanced illness diagnosis during the measurement period or the year prior to the measurement period

Table: Dementia Exclusion Medications

Description	Prescription
Cholinesterase inhibitors	Donepezil Galantamine Rivastigimine
Miscellaneous central nervous system agents	Memantine
Dementia combinations	Donepezil-memantine

- **Codes to identify Frailty:** 99504, 99509, E0100, E0105, E0130, E0135, E0140, E0141, E0143, E0144, E0147, E0148, E0149, E0163, E0165, E0167, E0168, E0170, E0171, E0250, E0251, E0255, E0256, E0260, E0261, E0265, E0266, E0270, E0290, E0291, E0292, E0293, E0294, E0295, E0296, E0297, E0301, E0302, E0303, E0304, E0424, E0425, E0430, E0431, E0433, E0434, E0435, E0439, E0440, E0441, E0442, E0443, E0444, E0462, E0465, E0466, E0470, E0471, E0472, E0561, E0562, E1130, E1140, E1150, E1160, E1161, E1240, E1250, E1260, E1270, E1280, E1285, E1290, E1295, E1296, E1297, E1298, G0162, G0299, G0300, G0493, G0494, S0271, S0311, S9123, S9124, T1000, T1001, T1002, T1003, T1004, T1005, T1019, T1020, T1021, T1022, T1030, T1031, L89.000, L89.001, L89.002, L89.003, L89.004, L89.006, L89.009, L89.010, L89.011, L89.012, L89.013, L89.014, L89.016, L89.019, L89.020, L89.021, L89.022, L89.023, L89.024, L89.026, L89.029, L89.100, L89.101, L89.102, L89.103, L89.104, L89.106, L89.109, L89.110, L89.111, L89.112, L89.113, L89.114, L89.116, L89.119, L89.120, L89.121, L89.122, L89.123, L89.124, L89.126, L89.129, L89.130, L89.131, L89.132, L89.133, L89.134, L89.136, L89.139, L89.140, L89.141, L89.142, L89.143, L89.144, L89.146, L89.149, L89.150, L89.151, L89.152, L89.153, L89.154, L89.156, L89.159, L89.200, L89.201, L89.202, L89.203, L89.204, L89.206, L89.209, L89.210, L89.211, L89.212, L89.213, L89.214, L89.216, L89.219, L89.220, L89.221, L89.222, L89.223, L89.224, L89.226, L89.229, L89.300, L89.301, L89.302, L89.303, L89.304, L89.306, L89.309, L89.310, L89.311, L89.312, L89.313, L89.314, L89.316, L89.319, L89.320, L89.321, L89.322, L89.323, L89.324, L89.326, L89.329, L89.40, L89.41, L89.42, L89.43, L89.44, L89.45, L89.46, L89.500, L89.501, L89.502, L89.503, L89.504, L89.506, L89.509, L89.510, L89.511, L89.512, L89.513, L89.514, L89.516, L89.519, L89.520, L89.521, L89.522, L89.523, L89.524, L89.526, L89.529, L89.600, L89.601, L89.602, L89.603, L89.604, L89.606, L89.609, L89.610, L89.611, L89.612, L89.613, L89.614, L89.616, L89.619, L89.620, L89.621, L89.622, L89.623, L89.624, L89.626, L89.629, L89.810, L89.811, L89.812, L89.813, L89.814, L89.816, L89.819, L89.890, L89.891, L89.892, L89.893, L89.894, L89.896, L89.899, L89.90, L89.91, L89.92, L89.93, L89.94, L89.95, L89.96, M62.50, M62.81, M62.84, R26.2, R26.89, R26.9, R53.1, R53.81, R54, R62.7, R63.4, R63.6, R64, W01.0XXA, W01.0XXD, W01.0XXS, W01.10XA, W01.10XD, W01.10XS, W01.110A, W01.110D, W01.110S, W01.111A, W01.111D, W01.111S, W01.118A, W01.118D, W01.118S, W01.119A, W01.119D, W01.119S, W01.190A, W01.190D, W01.190S, W01.198A, W01.198D, W01.198S, W06.XXXA, W06.XXXD, W06.XXXS, W07.XXXA, W07.XXXD, W07.XXXS, W08.XXXA, W08.XXXD, W08.XXXS, W10.0XXA, W10.0XXD, W10.0XXS, W10.1XXA, W10.1XXD, W10.1XXS, W10.2XXA, W10.2XXD, W10.2XXS, W10.8XXA, W10.8XXD, W10.8XXS, W10.9XXA, W10.9XXD, W10.9XXS, W18.00XA, W18.00XD, W18.00XS, W18.02XA, W18.02XD, W18.02XS, W18.09XA, W18.09XD, W18.09XS, W18.11XA, W18.11XD, W18.11XS, W18.12XA, W18.12XD, W18.12XS, W18.2XXA, W18.2XXD, W18.2XXS, W18.30XA, W18.30XD, W18.30XS, W18.31XA, W18.31XD, W18.31XS, W18.39XA,

W18.39XD, W18.39XS, W19.XXXA, W19.XXXD, W19.XXXS, Y92.199, Z59.3, Z73.6, Z74.01, Z74.09, Z74.1, Z74.2, Z74.3, Z74.8, Z74.9, Z91.81, Z99.11, Z99.3, Z99.81, Z99.89

- **Codes to identify Advanced Illness:** A81.00, A81.01, A81.09, C25.0, C25.1, C25.2, C25.3, C25.4, C25.7, C25.8, C25.9, C71.0, C71.1, C71.2, C71.3, C71.4, C71.5, C71.6, C71.7, C71.8, C71.9, C77.0, C77.1, C77.2, C77.3, C77.4, C77.5, C77.8, C77.9, C78.00, C78.01, C78.02, C78.1, C78.2, C78.30, C78.39, C78.4, C78.5, C78.6, C78.7, C78.80, C78.89, C79.00, C79.01, C79.02, C79.10, C79.11, C79.19, C79.2, C79.31, C79.32, C79.40, C79.49, C79.51, C79.52, C79.60, C79.61, C79.62, C79.70, C79.71, C79.72, C79.81, C79.82, C79.89, C79.9, C91.00, C91.02, C92.00, C92.02, C93.00, C93.02, C93.90, C93.92, C93.Z0, C93.Z2, C94.30, C94.32, F01.50, F01.511, F01.518, F01.52, F01.53, F01.54, F01.A0, F01.A11, F01.A18, F01.A2, F01.A3, F01.A4, F01.B0, F01.B11, F01.B18, F01.B2, F01.B3, F01.B4, F01.C0, F01.C11, F01.C18, F01.C2, F01.C3, F01.C4, F02.80, F02.811, F02.818, F02.82, F02.83, F02.84, F02.A0, F02.A11, F02.A18, F02.A2, F02.A3, F02.A4, F02.B0, F02.B11, F02.B18, F02.B2, F02.B3, F02.B4, F02.C0, F02.C11, F02.C18, F02.C2, F02.C3, F02.C4, F03.90, F03.911, F03.918, F03.92, F03.93, F03.94, F03.A0, F03.A11, F03.A18, F03.A2, F03.A3, F03.A4, F03.B0, F03.B11, F03.B18, F03.B2, F03.B3, F03.B4, F03.C0, F03.C11, F03.C18, F03.C2, F03.C3, F03.C4, F04, F10.27, F10.96, F10.97, G10, G12.21, , G20.A1, G20.A2, G20.B1, G20.B2, G20.C, G30.0, G30.1, G30.8, G30.9, G31.01, G31.09, G31.83, G35, I09.81, I11.0, I12.0, I13.0, I13.11, I13.2, I50.1, I50.20, I50.21, I50.22, I50.23, I50.30, I50.31, I50.32, I50.33, I50.40, I50.41, I50.42, I50.43, I50.810, I50.811, I50.812, I50.813, I50.814, I50.82, I50.83, I50.84, I50.89, I50.9, J43.0, J43.1, J43.2, J43.8, J43.9, J68.4, J84.10, J84.112, J84.170, J84.178, J96.10, J96.11, J96.12, J96.20, J96.21, J96.22, J96.90, J96.91, J96.92, J98.2, J98.3, K70.10, K70.11, K70.2, K70.30, K70.31, K70.40, K70.41, K70.9, K74.00, K74.01, K74.02, K74.1, K74.2, K74.4, K74.5, K74.60, K74.69, N18.5, N18.6

OR

Mammogram Performed

Performance Met: G9899:

Screening, diagnostic, film, digital or digital breast tomosynthesis (3D) mammography results documented and reviewed

OR

Mammogram not Performed, Reason not Otherwise Specified

Submit code G9900 to submit circumstances when the action described in the numerator is not performed and the reason is not otherwise specified.

Performance Not Met: G9900:

Screening, diagnostic, film, digital or digital breast tomosynthesis (3D) mammography results were not documented and reviewed, reason not otherwise specified

RATIONALE:

Breast cancer is one of the most common types of cancers, accounting for 15 percent of all new cancer diagnoses in the U.S. (Howlader et al, 2016). In 2015, over 3 million women were estimated to be living with breast cancer in the U.S. and it is estimated that 12 percent of women will be diagnosed with breast cancer at some point during their lifetime (Howlader et al, 2016).

While there are other factors that affect a woman's risk of developing breast cancer, advancing age is a primary risk factor. Breast cancer is most frequently diagnosed among women ages 55-64; the median age at diagnosis is 62 years (Howlader et al, 2016).

The chance of a woman being diagnosed with breast cancer in a given year increases with age. By age 40, the chances are 1 in 68; by age 50 it becomes 1 in 43; by age 60, it is 1 in 29 (American Cancer Society, 2017).

CLINICAL RECOMMENDATION STATEMENTS:

The U.S. Preventive Services Task Force (USPSTF) recommends biennial screening mammography for women aged 40-74 years (B recommendation) (USPSTF, 2023).

The USPSTF concludes that the current evidence is insufficient to assess the balance of benefits and harms of screening mammography in women aged 75 years or older (I statement) (USPSTF, 2023).

The USPSTF concludes that the current evidence is insufficient to assess the benefits and harms of digital breast tomosynthesis (DBT) as a primary screening method for breast cancer (I Statement) (USPSTF, 2016).

The USPSTF concludes that the current evidence is insufficient to assess the balance of benefits and harms of adjunctive screening for breast cancer using breast ultrasonography, magnetic resonance imaging, in women identified to have dense breasts on an otherwise negative screening mammogram (I statement) (USPSTF, 2023).

The National Comprehensive Cancer Network (NCCN) and the American College of Radiology (ACR) recommend using conventional mammography or DBT for screening women at low, intermediate or high risk for breast cancer (NCCN, 2021) (ACR, 2017).

COPYRIGHT:

This Physician Performance Measure (Measure) and related data specifications are owned and were developed by the National Committee for Quality Assurance (NCQA). NCQA is not responsible for any use of the Measure. NCQA makes no representations, warranties, or endorsement about the quality of any organization or physician that uses or reports performance measures and NCQA has no liability to anyone who relies on such measures or specifications. NCQA holds a copyright in the Measure.

The Measure can be reproduced and distributed, without modification, for noncommercial purposes (e.g., use by healthcare providers in connection with their practices) without obtaining approval from NCQA. Commercial use is defined as the sale, licensing, or distribution of the Measure for commercial gain, or incorporation of the Measure into a product or service that is sold, licensed or distributed for commercial gain. All commercial uses or requests for modification must be approved by NCQA and are subject to a license at the discretion of NCQA. (C) 2012-2024 National Committee for Quality Assurance. All Rights Reserved.

THE MEASURES AND SPECIFICATIONS ARE PROVIDED "AS IS" WITHOUT WARRANTY OF ANY KIND.

Limited proprietary coding is contained in the Measure specifications for user convenience. Users of proprietary code sets should obtain all necessary licenses from the owners of the code sets. NCQA disclaims all liability for use or accuracy of any CPT or other codes contained in the specifications.

CPT® codes, descriptions and other data are copyright 2004-2024 American Medical Association. CPT is a trademark of the American Medical Association.. Fee schedules, relative value units, conversion factors and/or related components are not assigned by the AMA, are not part of CPT, and the AMA is not recommending their use. The AMA does not directly or indirectly practice medicine or dispense medical services. The AMA assumes no liability for data contained or not contained herein. Applicable FARS/DFARS restrictions apply to government use.

Some measure specifications contain coding from LOINC(R) (<http://loinc.org>). The LOINC table, LOINC codes, LOINC panels and form file, LOINC linguistic variants file, LOINC/RSNA Radiology Playbook, and LOINC/IEEE Medical Device Code Mapping Table are copyright 2004-2024 Regenstrief Institute, Inc. and the Logical Observation Identifiers Names and Codes (LOINC) Committee, and are available at no cost under the license at <http://loinc.org/terms-of-use>.

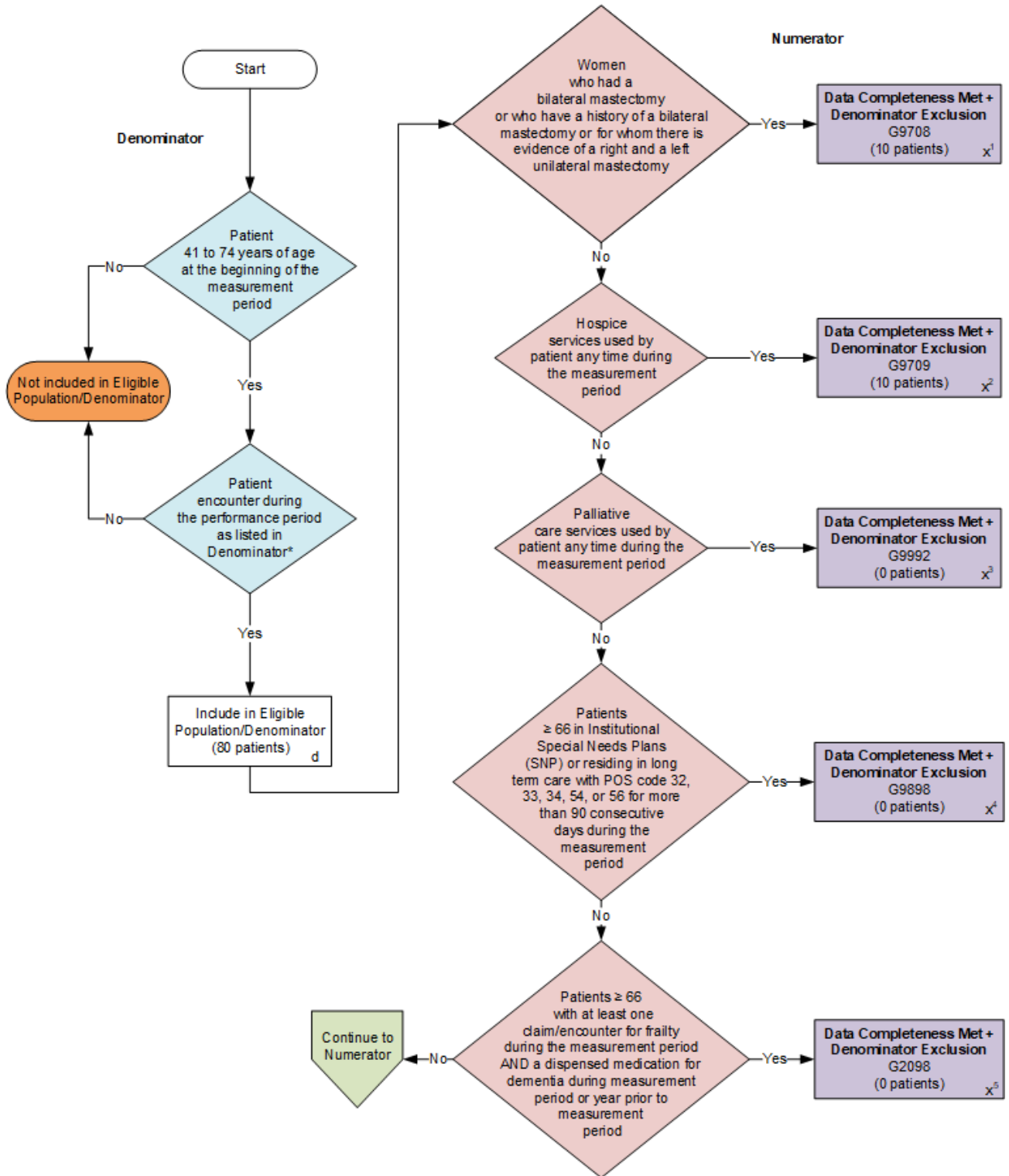
This material contains SNOMED Clinical Terms® (SNOMED CT®) copyright 2004-2024 International Health Terminology Standards Development Organisation.

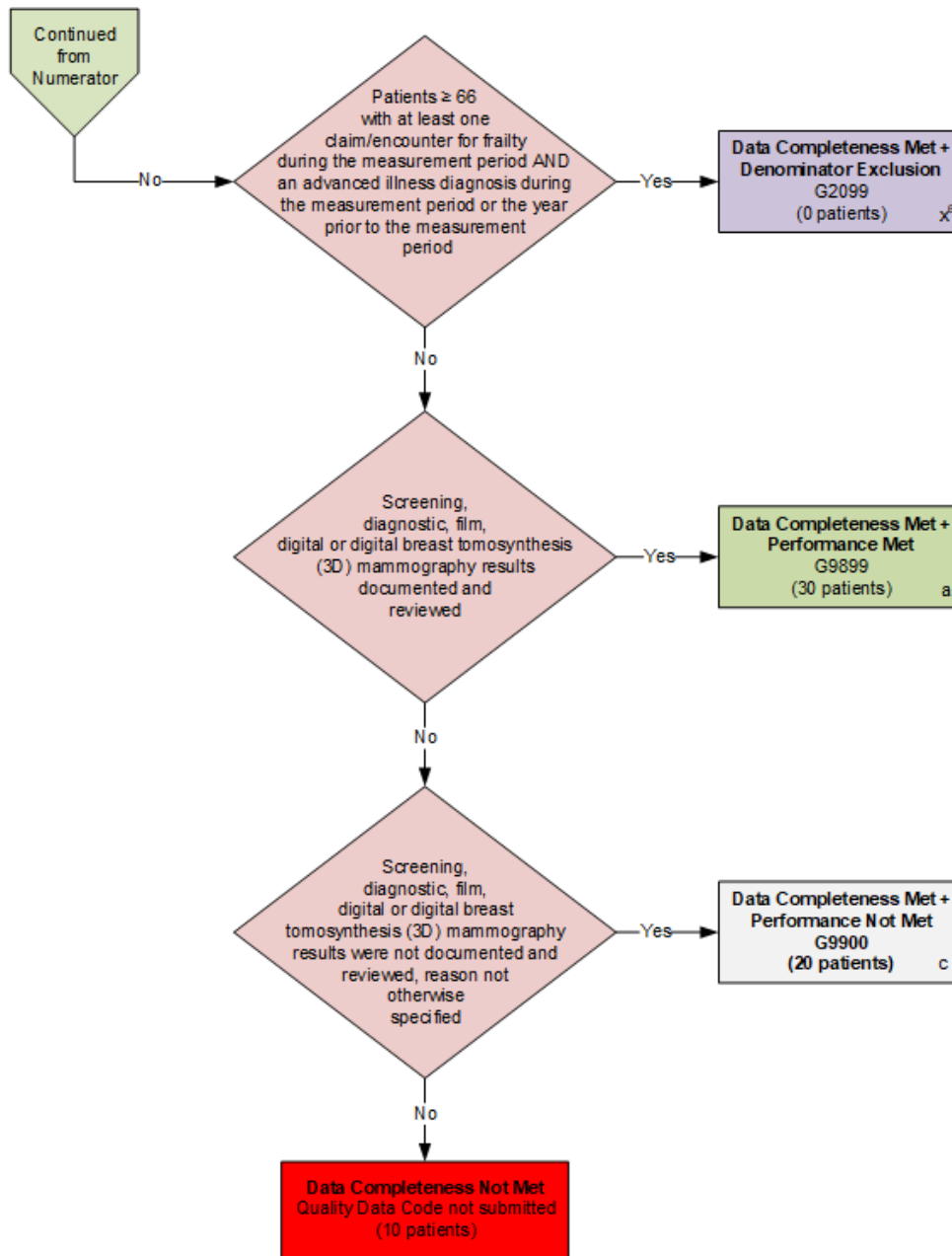
ICD-10 is copyright 2024 World Health Organization. All Rights Reserved.

Some measures use RxNorm, a standardized nomenclature and coding for clinical drugs and drug delivery devices, which is made publicly available courtesy of the U.S. National Library of Medicine (NLM), National Institutes of Health, Department of Health and Human Services. NLM is not responsible for the measures and does not endorse or recommend this or any other product.

2025 Medicare Part B Claims Flow for Quality ID #112 (CBE 2372): Breast Cancer Screening

Disclaimer: Refer to the measure specification for specific coding and instructions to submit this measure.





SAMPLE CALCULATIONS

Data Completeness=
 Denominator Exclusion ($x^1+x^2+x^3+x^4+x^5+x^6=20$ patients) + Performance Met (a=30 patients) + Performance Not Met (c=20 patients) = 70 patients = 87.50%
 Eligible Population / Denominator (d=80 patients) = 80 patients

Performance Rate=
 $\frac{\text{Performance Met (a=30 patients)}}{\text{Data Completeness Numerator (70 patients) - Denominator Exclusion (x^1+x^2+x^3+x^4+x^5+x^6=20 patients)}} = \frac{30 \text{ patients}}{50 \text{ patients}} = 60.00\%$

* See the posted measure specification for specific coding and instructions to report this measure.
 NOTE : Submission Frequency: Patient-Process

CPT only copyright 2024 American Medical Association. All rights reserved.
 The measure diagrams were developed by CMS as a supplemental resource to be used in conjunction with the measure specifications. They should not be used alone or as a substitution for the measure specification.
 v9

**2025 Medicare Part B Claims Flow Narrative for Quality ID #112 (CBE 2372):
Breast Cancer Screening**

Disclaimer: Refer to the measure specification for specific coding and instructions to submit this measure.

1. Start with Denominator
2. Check *Patient 41 to 74 years of age at the beginning of the measurement period*:
 - a. If *Patient 41 to 74 years of age at the beginning of the measurement period* equals No, do not include in *Eligible Population/Denominator*. Stop processing.
 - b. If *Patient 41 to 74 years of age at the beginning of the measurement period* equals Yes, proceed to check *Patient encounter during the performance period as listed in Denominator**.
3. Check *Patient encounter during the performance period as listed in Denominator**:
 - a. If *Patient encounter during the performance period as listed in Denominator** equals No, do not include in *Eligible Population/Denominator*. Stop processing.
 - b. If *Patient encounter during the performance period as listed in Denominator** equals Yes, include in *Eligible Population/Denominator*.
4. Denominator Population:
 - Denominator Population is all Eligible Patients in the Denominator. Denominator is represented as Denominator in the Sample Calculation listed at the end of this document. Letter d equals 80 patients in the Sample Calculation.
5. Start Numerator
6. Check *Women who had a bilateral mastectomy or who have a history of a bilateral mastectomy or for whom there is evidence of a right and a left unilateral mastectomy*:
 - a. If *Women who had a bilateral mastectomy or who have a history of a bilateral mastectomy or for whom there is evidence of a right and a left unilateral mastectomy* equals Yes, include in *Data Completeness Met and Denominator Exclusion*.
 - *Data Completeness Met and Denominator Exclusion* letter is represented as Data Completeness and Performance Rate in the Sample Calculation listed at the end of this document. Letter x¹ equals 10 patients in Sample Calculation.
 - b. If *Women who had a bilateral mastectomy or who have a history of a bilateral mastectomy or for whom there is evidence of a right and a left unilateral mastectomy* equals No, proceed to check *Hospice services used by patient any time during the measurement period*.
7. Check *Hospice services used by patient any time during the measurement period*:
 - a. If *Hospice services used by patient any time during the measurement period* equals Yes, include in *Data Completeness Met and Denominator Exclusion*.
 - *Data Completeness Met and Denominator Exclusion* letter is represented as Data Completeness and Performance Rate in the Sample Calculation listed at the end of this document. Letter x² equals 10 patients in the Sample Calculation.

- b. If *Hospice services used by patient any time during the measurement period* equals No, proceed to check *Palliative care services used by patient any time during the measurement period*.
8. Check *Palliative care services used by patient any time during the measurement period*.
 - a. If *Palliative care services used by patient any time during the measurement period* equals Yes, include in *Data Completeness Met and Denominator Exclusion*.
 - *Data Completeness Met and Denominator Exclusion* letter is represented as Data Completeness and Performance Rate in the Sample Calculation listed at the end of this document. Letter x³ equals 0 patients in the Sample Calculation.
 - b. If *Palliative care services used by patient any time during the measurement period* equals No, proceed to check *Patients greater than or equal to 66 in Institutional Special Needs Plans (SNP) or residing in long term care with POS code 32, 33, 34, 54, or 56 for more than 90 consecutive days during the measurement period*.
9. Check *Patients greater than or equal to 66 in Institutional Special Needs Plans (SNP) or residing in long term care with POS code 32, 33, 34, 54, or 56 for more than 90 consecutive days during the measurement period*:
 - a. If *Patients greater than or equal to 66 in Institutional Special Needs Plans (SNP) or residing in long term care with POS code 32, 33, 34, 54, or 56 for more than 90 consecutive days during the measurement period* equals Yes, include in *Data Completeness Met and Denominator Exclusion*.
 - *Data Completeness Met and Denominator Exclusion* letter is represented as Data Completeness and Performance Rate in the Sample Calculation listed at the end of this document. Letter x⁴ equals 0 patients in Sample Calculation.
 - b. If *Patients greater than or equal to 66 in Institutional Special Needs Plans (SNP) or residing in long term care with POS code 32, 33, 34, 54, or 56 for more than 90 consecutive days during the measurement period* equals No, proceed to check *Patients greater than or equal to 66 with at least one claim/encounter for frailty during the measurement period AND a dispensed medication for dementia during the measurement period or year prior to measurement period*.
10. Check *Patients greater than or equal to 66 with at least one claim/encounter for frailty during the measurement period AND a dispensed medication for dementia during the measurement period or year prior to measurement period*:
 - a. If *Patients greater than or equal to 66 with at least one claim/encounter for frailty during the measurement period AND a dispensed medication for dementia during the measurement period or year prior to measurement period* equals Yes, include in *Data Completeness Met and Denominator Exclusion*.
 - *Data Completeness Met and Denominator Exclusion* letter is represented as Data Completeness and Performance Rate in the Sample Calculation listed at the end of this document. Letter x⁵ equals 0 patients in the Sample Calculation.
 - b. If *Patients greater than or equal to 66 with at least one claim/encounter for frailty during the measurement period AND a dispensed medication for dementia during the measurement period or year prior to measurement period* equals No, proceed to check *Patients greater than or equal to 66 with at least one claim/encounter for frailty during the measurement period AND an advanced illness diagnosis during measurement period or the year prior to measurement period*.

11. Check *Patients greater than or equal to 66 with at least one claim/encounter for frailty during the measurement period AND an advanced illness diagnosis during measurement period or the year prior to measurement period*:
 - a. If *Patients greater than or equal to 66 with at least one claim/encounter for frailty during the measurement period AND advanced illness diagnosis during measurement period or the year prior to measurement period* equals Yes, include in *Data Completeness Met and Denominator Exclusion*.
 - *Data Completeness Met and Denominator Exclusion* letter is represented as Data Completeness and Performance Rate in the Sample Calculation listed at the end of this document. Letter x⁶ equals 0 patients in the Sample Calculation.
 - b. If *Patients greater than or equal to 66 with at least one claim/encounter for frailty during the measurement period AND an advanced illness diagnosis during measurement period or the year prior to measurement period* equals No, proceed to check *Screening, diagnostic, film, digital or digital breast tomosynthesis (3D) mammography results documented and reviewed*.
12. Check *Screening, diagnostic, film, digital or digital breast tomosynthesis (3D) mammography results documented and reviewed*:
 - a. If *Screening, diagnostic, film, digital or digital breast tomosynthesis (3D) mammography results documented and reviewed* equals Yes, include in *Data Completeness Met and Performance Met*.
 - *Data Completeness Met and Performance Met* letter is represented as Data Completeness and Performance Rate in the Sample Calculation listed at the end of this document. Letter a equals 30 patients in Sample Calculation.
 - b. If *Screening, diagnostic, film, digital or digital breast tomosynthesis (3D) mammography results documented and reviewed* equals No, proceed to check *Screening, diagnostic, film, digital or digital breast tomosynthesis (3D) mammography results were not documented and reviewed, reason not otherwise specified*.
13. Check *Screening, diagnostic, film, digital or digital breast tomosynthesis (3D) mammography results were not documented and reviewed, reason not otherwise specified*:
 - a. If *Screening, diagnostic, film, digital or digital breast tomosynthesis (3D) mammography results were not documented and reviewed, reason not otherwise specified* equals Yes, include in the *Data Completeness Met and Performance Not Met*.
 - *Data Completeness Met and Performance Not Met* letter is represented as Data Completeness in the Sample Calculation listed at the end of this document. Letter c equals 20 patients in the Sample Calculation.
 - b. If *Screening, diagnostic, film, digital or digital breast tomosynthesis (3D) mammography results were not documented and reviewed, reason not otherwise specified* equals No, proceed to check *Data Completeness Not Met*.
14. Check *Data Completeness Not Met*:
 - If *Data Completeness Not Met*, the Quality Data Code was not submitted. 10 patients have been subtracted from the Data Completeness Numerator in the Sample Calculation.

Sample Calculations:

Data Completeness equals Denominator Exclusion (x^1 plus x^2 plus x^3 plus x^4 plus x^5 plus x^6 equals 20 patients) plus Performance Met (a equals 30 patients) plus Performance Not Met (c equals 20 patients) divided by Eligible Population/Denominator (d equals 80 patients). All equals 70 patients divided by 80 patients. All equals 87.50 percent.

Performance Rate equals Performance Met (a equals 30 patients) divided by Data Completeness Numerator (70 patients) minus Denominator Exclusion (x^1 plus x^2 plus x^3 plus x^4 plus x^5 plus x^6 equals 20 patients). All equals 30 patients divided by 50 patients. All equals 60.00 percent.

*See the posted measure specification for specific coding and instructions to submit this measure.

NOTE: Submission Frequency: Patient-Process

The measure diagrams were developed by CMS as a supplemental resource to be used in conjunction with the measure specifications. They should not be used alone or as a substitution for the measure specification.