

**Quality ID #350: Total Knee or Hip Replacement: Shared Decision-Making: Trial of Conservative (Non-surgical) Therapy**  
– National Quality Strategy Domain: Communication and Care Coordination  
– Meaningful Measure Area: Care is Personalized and Aligned with Patient’s Goals

**2022 COLLECTION TYPE:**  
MIPS CLINICAL QUALITY MEASURES (CQMS)

**MEASURE TYPE:**  
Process – High Priority

**DESCRIPTION:**  
Percentage of patients regardless of age undergoing a total knee or total hip replacement with documented shared decision-making with discussion of conservative (non-surgical) therapy (e.g., non-steroidal anti-inflammatory drug (NSAIDs), analgesics, weight loss, exercise, injections) prior to the procedure.

**INSTRUCTIONS:**  
This measure is to be submitted **each time** a procedure for total knee or total hip replacement is performed during the performance period. There is no diagnosis associated with this measure. This measure may be submitted by Merit-based Incentive Payment System (MIPS) eligible clinicians who perform the quality actions described in the measure based on the services provided and the measure-specific denominator coding.

**Measure Submission Type:**  
Measure data may be submitted by individual MIPS eligible clinicians, groups, or third party intermediaries. The listed denominator criteria are used to identify the intended patient population. The numerator options included in this specification are used to submit the quality actions as allowed by the measure. The quality data codes listed do not need to be submitted by MIPS eligible clinicians, groups, or third party intermediaries that utilize this modality for submissions; however, these codes may be submitted for those third party intermediaries that utilize Medicare Part B claims data. For more information regarding Application Programming Interface (API), please refer to the Quality Payment Program (QPP) website.

**DENOMINATOR:**  
All patients regardless of age undergoing a total knee or total hip replacement

**Denominator Criteria (Eligible Cases):**  
All patients, regardless of age  
**AND**  
**Patient procedure during the performance period (CPT):** 27438, 27442, 27445, 27446, 27447, 27130  
**WITHOUT**  
**Telehealth Modifier:** GQ, GT, 95, POS 02

**NUMERATOR:**  
Patients with documented shared decision-making including discussion of conservative (non-surgical) therapy (e.g. NSAIDs, analgesics, weight loss, exercise, injections) prior to the procedure

**Numerator Options:**  
**Performance Met:** Patients with documented shared decision-making including discussion of conservative (non-surgical) therapy (e.g., NSAIDs, analgesics, weight loss, exercise, injections) prior to the procedure (**G9296**)

**OR**  
**Performance Not Met:** Shared decision-making including discussion of conservative (non-surgical) therapy (e.g., NSAIDs,

analgesics, weight loss, exercise, injections) prior to the procedure not documented, reason not given (G9297)

**RATIONALE:**

A trial of non-surgical therapy should be used prior to surgery, when possible. Non-surgical therapy may include the use of NSAIDs, other analgesics, exercise, or injections. For patients with severe disability, the patient and surgeon may decide after a thorough review of conservative options that the optimal treatment is to proceed with the operative intervention.

This measure is designed for use by physicians and eligible health care professionals managing ongoing care for all patients undergoing a total knee or hip replacement. This measure addresses the preoperative period.

**CLINICAL RECOMMENDATION STATEMENTS:**

*AAOS 2013 Treatment Guideline of Osteoarthritis of the Knee Evidence-Based Guideline 2<sup>nd</sup> Edition (AAOS, 2013)*

AAOS recommends that patients with symptomatic osteoarthritis of the knee participate in self-management programs, strengthening, low-impact aerobic exercises, and neuromuscular education; and engage in physical activity consistent with national guidelines. (Strong Recommendation)

AAOS suggests weight loss for patients with symptomatic osteoarthritis of the knee and a BMI  $\geq$  25. (Moderate Recommendation)

AAOS recommends nonsteroidal anti-inflammatory drugs (NSAIDs; oral or topical) or Tramadol for patients with symptomatic osteoarthritis of the knee. (Strong Recommendation)

*OARSI 2008 Recommendations for the Management of Hip and Knee Osteoarthritis Part II (Zhang W, Moskowitz RW, Nuki G, Abramson S, et al., 2008)*

Patients with hip or knee OA who are not obtaining adequate pain relief and functional improvement from a combination of non-pharmacological and pharmacological treatment should be considered for joint replacement therapy.

**COPYRIGHT:**

© 2018 American Association of Hip and Knee Surgeons. All rights reserved.

These performance measures are not clinical guidelines. They do not establish a standard of medical care and have not been tested for all potential applications. These Measures and specifications are provided “as is” without warranty of any kind. AAHKS shall not be responsible for any use of these performance measures.

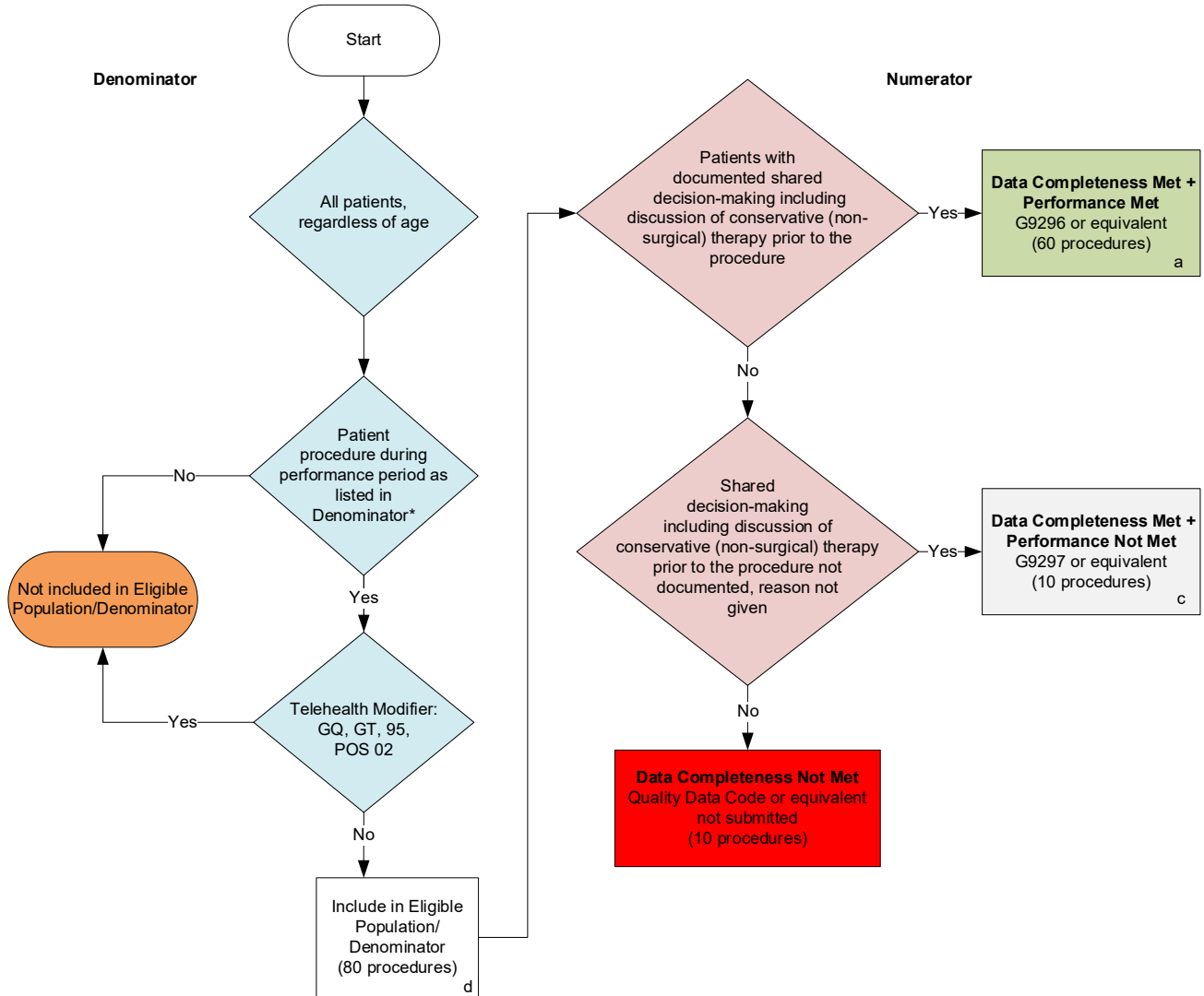
Limited proprietary coding is contained in the Measure specifications for convenience. Users of the proprietary code sets should obtain all necessary licenses from the owners of these code sets. AAHKS disclaims all liability for use or accuracy of any Current Procedural Terminology (CPT®) or other coding contained in the specifications.

The Measures are subject to review and may be revised at any time by AAHKS. The Measures may not be altered without the prior written approval of AAHKS. Users of the Measures shall not have the right to alter, enhance, or otherwise modify the Measures.

CPT® contained in the Measure specifications is copyright 2004-2021 American Medical Association. All Rights Reserved.

**2022 Clinical Quality Measure Flow for Quality ID #350:  
Total Knee or Hip Replacement: Shared Decision-Making: Trial of Conservative  
(Non-surgical) Therapy**

*Disclaimer: Refer to the measure specification for specific coding and instructions to submit this measure.*



**SAMPLE CALCULATIONS**

**Data Completeness=**  

$$\frac{\text{Performance Met (a=60 procedures)} + \text{Performance Not Met (c=10 procedures)}}{\text{Eligible Population / Denominator (d=80 procedures)}} = \frac{70 \text{ procedures}}{80 \text{ procedures}} = 87.50\%$$

**Performance Rate=**  

$$\frac{\text{Performance Met (a=60 procedures)}}{\text{Data Completeness Numerator (70 procedures)}} = \frac{60 \text{ procedures}}{70 \text{ procedures}} = 85.71\%$$

\*See the posted measure specification for specific coding and instructions to submit this measure  
 NOTE: Submission Frequency: Procedure

CPT only copyright 2021 American Medical Association. All rights reserved. The measure diagrams were developed by CMS as a supplemental resource to be used in conjunction with the measure specifications. They should not be used alone or as a substitution for the measure specification.

v6

## 2022 Clinical Quality Measure Flow Narrative for Quality ID #350:

### Total Knee or Hip Replacement: Shared Decision-Making: Trial of Conservative (Non-surgical) Therapy

**Disclaimer:** Refer to the measure specification for specific coding and instructions to submit this measure.

1. Start with Denominator
2. All patients, regardless of age.
3. Check *Patient procedure during performance period as listed in Denominator\**:
  - a. If *Patient procedure during performance period as listed in Denominator\** equals No, do not include in *Eligible Population/Denominator*. Stop processing.
  - b. If *Patient procedure during performance period as listed in Denominator\** equals Yes, proceed to check *Telehealth Modifier*.
4. Check *Telehealth Modifier*:
  - a. If *Telehealth Modifier* equals Yes, do not include in *Eligible Population/Denominator*. Stop processing.
  - b. If *Telehealth Modifier* equals No, include in *Eligible Population/Denominator*.
5. Denominator Population:
  - a. Denominator Population is all Eligible Procedures in the Denominator. Denominator is represented as Denominator in the Sample Calculation listed at the end of this document. Letter d equals 80 procedures in the Sample Calculation.
6. Start Numerator
7. Check *Patients with documented shared decision-making including discussion of conservative (non- surgical) therapy prior to the procedure*:
  - a. If *Patients with documented shared decision-making including discussion of conservative (non- surgical) therapy prior to the procedure* equals Yes, include in *Data Completeness Met and Performance Met*.
    - *Data Completeness Met and Performance Met* letter is represented in the Data Completeness and Performance Rate in the Sample Calculation listed at the end of this document. Letter a equals 60 procedures in the Sample Calculation.
  - b. If *Patients with documented shared decision-making including discussion of conservative (non-surgical) therapy prior to the procedure* equals No, proceed to check *Shared decision-making including discussion of conservative (non- surgical) therapy prior to the procedure not documented, reason not given*.
8. Check *Shared decision-making including discussion of conservative (non-surgical) therapy prior to the procedure not documented, reason not given*:
  - a. If *Shared decision-making including discussion of conservative (non-surgical) therapy prior to the procedure not documented, reason not given* equals Yes, include in *Data Completeness Met and Performance Not Met*.
    - *Data Completeness Met and Performance Not Met* letter is represented in the Data Completeness in the Sample Calculation listed at the end of this document. Letter c equals 10 procedures in the Sample Calculation.

- b. If *Shared decision-making including discussion of conservative (non-surgical) therapy prior to the procedure not documented, reason not given* equals No, proceed to check *Data Completeness Not Met*.

9. Check *Data Completeness Not Met*:

- If *Data Completeness Not Met*, Quality Data Code or equivalent not submitted. 10 procedures have been subtracted from the Data Completeness Numerator in the Sample Calculation.

**Sample Calculations**

Data Completeness equals Performance Met (a equals 60 procedures) plus Performance Not Met (c equals 10 procedures) divided by Eligible Population / Denominator (d equals 80 procedures). All equals 70 procedures divided by 80 procedures. All equals 87.50 percent.

Performance Rate equals Performance Met (a equals 60 procedures) divided by Data Completeness Numerator (70 procedures). All equals 60 procedures divided by 70 procedures. All equals 85.71 percent.

\*See the posted measure specification for specific coding and instructions to submit this measure.

NOTE: Submission Frequency: Procedure

The measure diagrams were developed by CMS as a supplemental resource to be used in conjunction with the measure specifications. They should not be used alone or as a substitution for the measure specification.