

**Quality ID #340 (NQF 2079): HIV Medical Visit Frequency**  
– National Quality Strategy Domain: Efficiency and Cost Reduction  
– Meaningful Measure Area: Management of Chronic Conditions

**2022 COLLECTION TYPE:**  
**MIPS CLINICAL QUALITY MEASURES (CQMS)**

**MEASURE TYPE:**  
Process – High Priority

**DESCRIPTION:**  
Percentage of patients, regardless of age, with a diagnosis of HIV who had at least one medical visit in each 6 month period of the 24 month measurement period, with a minimum of 60 days between medical visits.

**INSTRUCTIONS:**  
This measure is to be submitted a minimum of **once per performance period** for patients with HIV seen during the performance period. This measure is intended to reflect the quality of services provided for the primary management of patients with HIV. This measure may be submitted by Merit-based Incentive Payment System (MIPS) eligible clinicians who perform the quality actions described in the measure based on the services provided and the measure-specific denominator coding.

***NOTE:*** Patient encounters for this measure conducted via telehealth (e.g., encounters coded with GQ, GT, 95, or POS 02 modifiers) are allowable.

**Measure Submission Type:**  
Measure data may be submitted by individual MIPS eligible clinicians, groups, or third party intermediaries. The listed denominator criteria are used to identify the intended patient population. The numerator options included in this specification are used to submit the quality actions as allowed by the measure. The quality data codes listed do not need to be submitted by MIPS eligible clinicians, groups, or third party intermediaries that utilize this modality for submissions; however, these codes may be submitted for those third party intermediaries that utilize Medicare Part B claims data. For more information regarding Application Programming Interface (API), please refer to the Quality Payment Program (QPP) website.

**DENOMINATOR:**  
Patients, regardless of age, with a diagnosis of HIV with at least one medical visit in the performance period

***DENOMINATOR NOTE:*** In order to determine denominator eligibility, patients should be diagnosed with HIV during the first 3 months of the 24-month measurement period or have a diagnosis prior to the 24-month measurement period. The 24-month measurement period is defined as the 24 months prior to and including the date of the first qualifying encounter during the performance period (i.e., January 1, 2022 through December 31, 2022). Performance of the measure is met when there is at least one medical visit in each 6 month interval with 60 days between denominator eligible encounters for patients with HIV within the 24-month measurement period.

**Denominator Criteria (Eligible Cases):**  
Patients, regardless of age  
**AND**  
**Diagnosis of HIV (ICD-10-CM):** B20, Z21

**AND**  
**Patient encounter during the performance period (CPT or HCPCS):** 99202, 99203, 99204, 99205, 99212, 99213, 99214, 99215, 99424, 99426, G0402

**AND NOT**  
**DENOMINATOR EXCLUSION:**

Patient died at any time during the 24-month measurement period: G9751

**NUMERATOR:**

Number of patients who had at least one medical visit in each 6 month period of the 24 month measurement period, with a minimum of 60 days between medical visits

**Numerator Options:**

***Performance Met:***

Patient had at least one medical visit in each 6 month period of the 24 month measurement period, with a minimum of 60 days between medical visits (**G9247**)

**OR**

***Performance Not Met:***

Patient did not have at least one medical visit in each 6 month period of the 24 month measurement period, with a minimum of 60 days between medical visits (**G9246**)

**RATIONALE:**

Early linkage to and long-term retention in HIV care leads to better health outcomes. Linkage to HIV medical care shortly after HIV diagnosis and continuous care thereafter provide opportunities for risk reduction counseling, initiation of treatment, and other strategies that improve individual health and prevent onward transmission of infection (Giordano, 2007; Cohen, 2011; Giordano, 2003; Lucas, 1999; Metscher, 2008; Montaner, 2010). Delayed linkage and poor retention in care are associated with delayed receipt of antiretroviral treatment, higher rate of virologic failure, and increased morbidity and mortality (Metscher, 2008; Montaner, 2010; Ulett, 2009).

Poor retention in care during the first year of outpatient medical care is associated with delayed or failed receipt of antiretroviral therapy, delayed time to virologic suppression and greater cumulative HIV burden, increased sexual risk transmission behaviors, increased risk of long-term adverse clinical events, and low adherence to antiretroviral therapy (Giordano, 2007; Metscher, 2008; Ulett, 2009; Mugavero, 2009). Early retention in HIV care has been found to be associated with time to viral load suppression and 2-year cumulative viral load burden among patients newly initiating HIV medical care (Mugavero, 2012). In this study, each “no show” clinic visit conveyed a 17% increased risk of delayed viral load suppression. A dose- response relationship has been shown between constancy of visits during the first year (i.e. having an HIV primary care visit in each 3-month quarter) and survival (Mugavero, 2009). Another study examining care over a two year period has found that mean increase from baseline CD4 counts was significantly greater among those with optimal retention (visits in all 4 six-month intervals) than among those with sub-optimal retention, and that mortality was higher among those with suboptimal retention (Tripathi, 2011).

In an analysis of 9 years (January 1, 2001 through December 31, 2009) of outpatient HIV care utilization from 17, 425 HIV infected adults enrolled in the HIV Research Network (HIVRN), a consortium of HIV care clinics, Yehia et al. found that 7179 (41.6%) individuals never experienced an interval between outpatient visits longer than 6 months (no gap), 5426 (31.1%) had one or more 7–12-month gaps in care, and 4820 (27.7%) had one or more gaps of longer than 12 months.

**CLINICAL RECOMMENDATION STATEMENTS:**

U.S. Department of Health and Human Service (HHS) guidelines make recommendations regarding the types and frequency of screenings, laboratory testing, and counseling that should be provided to people living with HIV. Screening, testing, and counseling are delivered through comprehensive HIV medical care visits. The frequency of the medical visit are related to the individual patient’s health status and attainment of health outcomes. Based on the frequency of screenings, testing, and counseling, HIV medical visits should occur every six months. (Strength of Evidence = AI, AIII, BIII) (Guidelines for the Use of Antiretroviral Agents in HIV-1-Infected Adults and Adolescents PDF Sections E-1 and C-3. Accessed May 18, 2015).

**COPYRIGHT:**

This measure was developed by the Health Resources and Services Administration of the U.S. Department of

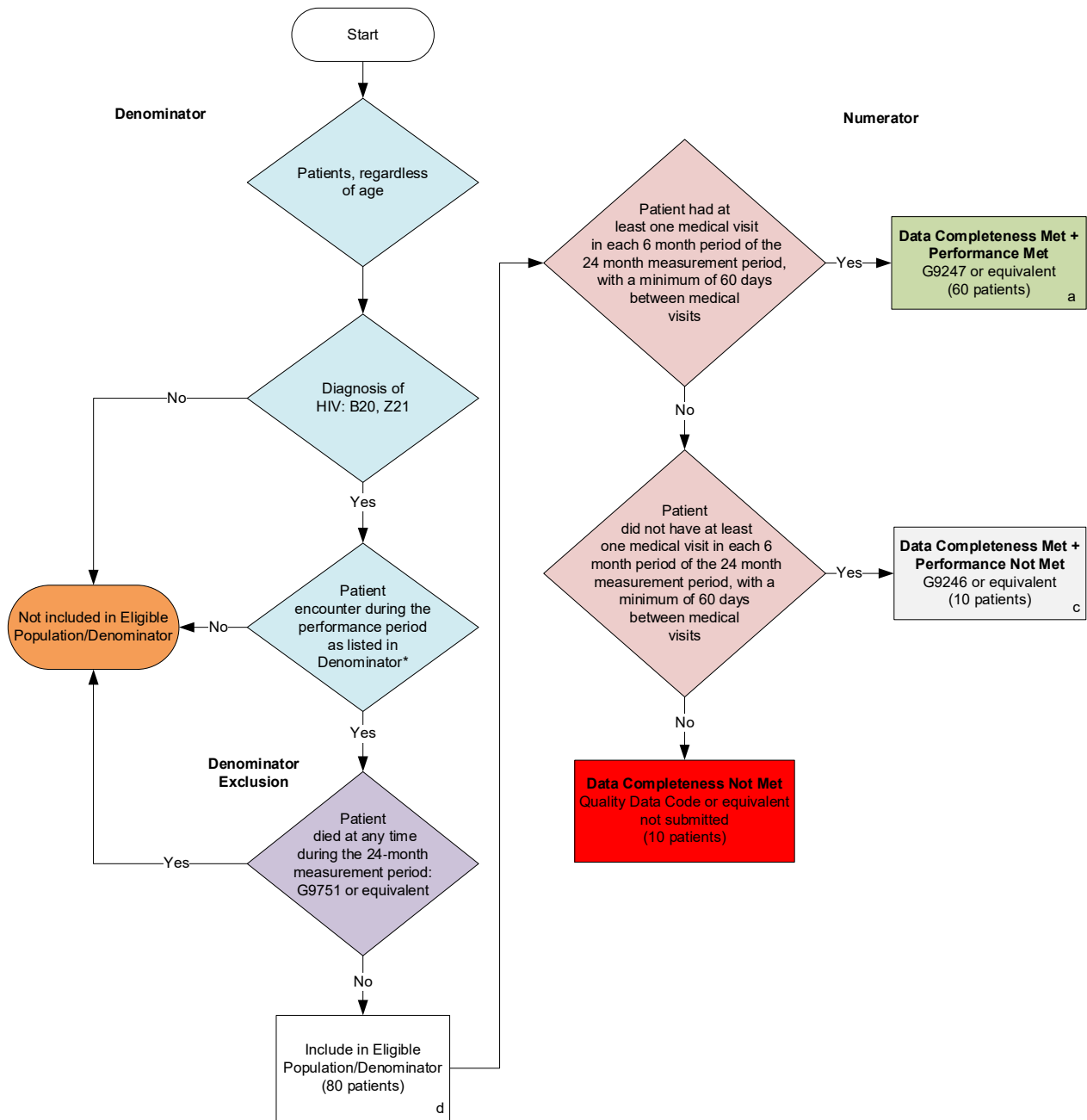
Health and Human Services. It is in the public domain.

Citation of HRSA as the source of the original measure is appreciated. Any modified versions may not be represented as approved, endorsed, or authorized by HRSA or HHS. 42 U.S.C. § 1320b-10. Users of modified versions should clearly explain how they deviate from HRSA's original measure.

CPT® contained in the Measure specifications is copyright 2004-2021 American Medical Association. ICD-10 is copyright 2021 World Health Organization. All Rights Reserved.

## 2022 Clinical Quality Measure Flow for Quality ID #340 (NQF 2079): HIV Medical Visit Frequency

*Disclaimer: Refer to the measure specification for specific coding and instructions to submit this measure.*



### SAMPLE CALCULATIONS

**Data Completeness=**

$$\frac{\text{Performance Met (a=60 patients)} + \text{Performance Not Met (c=10 patients)}}{\text{Eligible Population / Denominator (d=80 patients)}} = \frac{70 \text{ patients}}{80 \text{ patients}} = 87.50\%$$

**Performance Rate=**

$$\frac{\text{Performance Met (a=60 patients)}}{\text{Data Completeness Numerator (70 patients)}} = \frac{60 \text{ patients}}{70 \text{ patients}} = 85.71\%$$

\*See the posted measure specification for specific coding and instructions to submit this measure.

NOTE: Submission Frequency: Patient-Process

CPT only copyright 2021 American Medical Association. All rights reserved.  
The measure diagrams were developed by CMS as a supplemental resource to be used in conjunction with the measure specifications. They should not be used alone or as a substitution for the measure specification.

v6

## 2022 Clinical Quality Measure Flow Narrative for Quality ID #340 (NQF 2079): HIV Medical Visit Frequency

**Disclaimer:** Refer to the measure specification for specific coding and instructions to submit this measure.

1. Start with Denominator
2. Patients, regardless of age.
3. Check *Diagnosis of HIV*:
  - a. If *Diagnosis of HIV* equals No, do not include in *Eligible Population/Denominator*. Stop processing.
  - b. If *Diagnosis of HIV* equals Yes, proceed to check *Patient encounter during the performance period as listed in Denominator\**.
4. Check *Patient encounter during the performance period as listed in Denominator\**:
  - a. If *Patient encounter during the performance period as listed in Denominator\** equals No, do not include in *Eligible Population/Denominator*. Stop processing.
  - b. If *Patient encounter during the performance period as listed in Denominator\** equals Yes, proceed to check *Patient died at any time during the 24-month measurement period*.
5. Check *Patient died at any time during the 24-month measurement period*:
  - a. If *Patient died at any time during the 24-month measurement period* equals Yes, do not include in *Eligible Population/Denominator*. Stop processing.
  - b. If *Patient died at any time during the 24-month measurement period* equals No, include in the *Eligible Population/Denominator*.
6. Denominator Population:
  - Denominator Population is all Eligible Patients in the Denominator. Denominator is represented as Denominator in the Sample Calculation listed at the end of this document. Letter d equals 80 patients in the Sample Calculation.
7. Start Numerator
8. Check *Patient had at least one medical visit in each 6 month period of the 24 month measurement period, with a minimum of 60 days between medical visits*:
  - a. If *Patient had at least one medical visit in each 6 month period of the 24 month measurement period, with a minimum of 60 days between medical visits* equals Yes, include in *Data Completeness Met and Performance Met*.
    - *Data Completeness Met and Performance Met* letter is represented in the Data Completeness and Performance Rate in the Sample Calculation listed at the end of this document. Letter a equals 60 patients in the Sample Calculation.
  - b. If *Patient had at least one medical visit in each 6 month period of the 24 month measurement period, with a minimum of 60 days between medical visits* equals No, proceed to check *Patient did not have at least one medical visit in each 6 month period of the 24 month measurement period, with a minimum of 60 days between medical visits*.

9. Check *Patient did not have at least one medical visit in each 6 month period of the 24 month measurement period, with a minimum of 60 days between medical visits*:
  - a. If *Patient did not have at least one medical visit in each 6 month period of the 24 month measurement period, with a minimum of 60 days between medical visits* equals Yes, include in *Data Completeness Met and Performance Not Met*.
    - *Data Completeness Met and Performance Not Met* letter is represented in the Data Completeness in the Sample Calculation listed at the end of this document. Letter c equals 10 patients in the Sample Calculation.
  - b. If *Patient did not have at least one medical visit in each 6 month period of the 24 month measurement period, with a minimum of 60 days between medical visits* equals No, proceed to check *Data Completeness Not Met*.
10. Check *Data Completeness Not Met*:
  - a. If *Data Completeness Not Met*, Quality Data Code or equivalent not submitted. 10 patients have been subtracted from the Data Completeness Numerator in the Sample Calculation.

**Sample Calculations:**

Data Completeness equals Performance Met (a equals 60 patients) plus Performance Not Met (c equals 10 patients) divided by Eligible Population / Denominator (d equals 80 patients). All equals 70 patients divided by 80 patients. All equals 87.50 percent.

Performance Rate equals Performance Met (a equals 60 patients) divided by Data Completeness Numerator (70 patients). All equals 60 patients divided by 70 patients. All equals 85.71 percent.

\*See the posted measure specifications for specific coding and instructions to submit this measure.

NOTE: Submission Frequency: Patient-Process

The measure diagrams were developed by CMS as a supplemental resource to be used in conjunction with the measure specifications. They should not be used alone or as a substitution for the measure specification.