

Quality ID #178: Rheumatoid Arthritis (RA): Functional Status Assessment
– National Quality Strategy Domain: Effective Clinical Care
– Meaningful Measure Area: Patient’s Experience of Care

2022 COLLECTION TYPE:
MIPS CLINICAL QUALITY MEASURES (CQMS)

MEASURE TYPE:
Process

DESCRIPTION:
Percentage of patients aged 18 years and older with a diagnosis of rheumatoid arthritis (RA) for whom a functional status assessment was performed at least once within 12 months.

INSTRUCTIONS:
This measure is to be submitted a minimum of **once per performance period** for patients with RA seen during the performance period. It is anticipated that Merit-based Incentive Payment System (MIPS) eligible clinicians who provide care for patients with a diagnosis of RA will submit this measure.

NOTE: Patient encounters for this measure conducted via telehealth (e.g., encounters coded with GQ, GT, 95, or POS 02 modifiers) are allowable.

Measure Submission Type:
Measure data may be submitted by individual MIPS eligible clinicians, groups, or third party intermediaries. The listed denominator criteria are used to identify the intended patient population. The numerator options included in this specification are used to submit the quality actions as allowed by the measure. The quality data codes listed do not need to be submitted by MIPS eligible clinicians, groups, or third party intermediaries that utilize this modality for submissions; however, these codes may be submitted for those third party intermediaries that utilize Medicare Part B claims data. For more information regarding Application Programming Interface (API), please refer to the Quality Payment Program (QPP) website.

DENOMINATOR:
All patients aged 18 years and older with a diagnosis of RA

DENOMINATOR NOTE: *Signifies that this HCPCS code is a non-covered service under the Medicare Part B Physician Fee Schedule (PFS). These non-covered services should be counted in the denominator population for the MIPS CQMs.

Denominator Criteria (Eligible Cases):
Patients aged ≥ 18 years on date of encounter

AND

Diagnosis for rheumatoid arthritis (RA) (ICD-10-CM): M05.00, M05.011, M05.012, M05.019, M05.021, M05.022, M05.029, M05.031, M05.032, M05.039, M05.041, M05.042, M05.049, M05.051, M05.052, M05.059, M05.061, M05.062, M05.069, M05.071, M05.072, M05.079, M05.09, M05.10, M05.111, M05.112, M05.119, M05.121, M05.122, M05.129, M05.131, M05.132, M05.139, M05.141, M05.142, M05.149, M05.151, M05.152, M05.159, M05.161, M05.162, M05.169, M05.171, M05.172, M05.179, M05.19, M05.20, M05.211, M05.212, M05.219, M05.221, M05.222, M05.229, M05.231, M05.232, M05.239, M05.241, M05.242, M05.249, M05.251, M05.252, M05.259, M05.261, M05.262, M05.269, M05.271, M05.272, M05.279, M05.29, M05.30, M05.311, M05.312, M05.319, M05.321, M05.322, M05.329, M05.331, M05.332, M05.339, M05.341, M05.342, M05.349, M05.351, M05.352, M05.359, M05.361, M05.362, M05.369, M05.371, M05.372, M05.379, M05.39, M05.40, M05.411, M05.412, M05.419, M05.421, M05.422, M05.429, M05.431, M05.432, M05.439, M05.441, M05.442, M05.449, M05.451, M05.452, M05.459, M05.461, M05.462, M05.469, M05.471, M05.472, M05.479, M05.49, M05.50, M05.511, M05.512, M05.519, M05.521,

M05.522, M05.529, M05.531, M05.532, M05.539, M05.541, M05.542, M05.549, M05.551, M05.552, M05.559, M05.561, M05.562, M05.569, M05.571, M05.572, M05.579, M05.59, M05.60, M05.611, M05.612, M05.619, M05.621, M05.622, M05.629, M05.631, M05.632, M05.639, M05.641, M05.642, M05.649, M05.651, M05.652, M05.659, M05.661, M05.662, M05.669, M05.671, M05.672, M05.679, M05.69, M05.7A, M05.70, M05.711, M05.712, M05.719, M05.721, M05.722, M05.729, M05.731, M05.732, M05.739, M05.741, M05.742, M05.749, M05.751, M05.752, M05.759, M05.761, M05.762, M05.769, M05.771, M05.772, M05.779, M05.79, M05.8A, M05.80, M05.811, M05.812, M05.819, M05.821, M05.822, M05.829, M05.831, M05.832, M05.839, M05.841, M05.842, M05.849, M05.851, M05.852, M05.859, M05.861, M05.862, M05.869, M05.871, M05.872, M05.879, M05.89, M05.9, M06.0A, M06.00, M06.011, M06.012, M06.019, M06.021, M06.022, M06.029, M06.031, M06.032, M06.039, M06.041, M06.042, M06.049, M06.051, M06.052, M06.059, M06.061, M06.062, M06.069, M06.071, M06.072, M06.079, M06.08, M06.09, M06.20, M06.211, M06.212, M06.219, M06.221, M06.222, M06.229, M06.231, M06.232, M06.239, M06.241, M06.242, M06.249, M06.251, M06.252, M06.259, M06.261, M06.262, M06.269, M06.271, M06.272, M06.279, M06.28, M06.29, M06.30, M06.311, M06.312, M06.319, M06.321, M06.322, M06.329, M06.331, M06.332, M06.339, M06.341, M06.342, M06.349, M06.351, M06.352, M06.359, M06.361, M06.362, M06.369, M06.371, M06.372, M06.379, M06.38, M06.39, M06.8A, M06.80, M06.811, M06.812, M06.819, M06.821, M06.822, M06.829, M06.831, M06.832, M06.839, M06.841, M06.842, M06.849, M06.851, M06.852, M06.859, M06.861, M06.862, M06.869, M06.871, M06.872, M06.879, M06.88, M06.89, M06.9

AND

Patient encounter during the performance period (CPT or HCPCS): 99202, 99203, 99204, 99205, 99212, 99213, 99214, 99215, 99341, 99342, 99343, 99344, 99345, 99347, 99348, 99349, 99350, 99424, 99426, G0402, G0468*

NUMERATOR:

Patients for whom a functional status assessment using an ACR-preferred, patient-reported functional status assessment tool was performed at least once within 12 months

Definition:

Functional Status Assessment – This measure assesses if physicians are using a standardized tool to assess the impact of RA on patient activities of daily living. Functional status should be assessed using one of the following ACR-preferred tools to fulfill the measure requirements:

- PROMIS Physical Function 10-item (PROMIS PF10a)
- Health Assessment Questionnaire-II (HAQ-II)
- Multi-Dimensional Health Assessment Questionnaire (MD-HAQ)

Numerator Options:

Performance Met:

Functional status assessed (**1170F**)

OR

Performance Not Met:

Functional status not assessed, reason not otherwise specified (**1170F with 8P**)

RATIONALE:

Functional limitations are a significant and disruptive complication for patients living with RA. Assessments of functional limitations are used to assess prognosis and guide treatment and therapy decisions. According to the ACR's RA treatment guidelines, functional status assessment using a standardized, validated measure should be performed routinely for RA patients, at least once per year, but more frequently if disease is active.

CLINICAL RECOMMENDATION STATEMENTS:

The management of RA is an iterative process, and patients should be routinely reassessed for evidence of disease or limitation of function with significant alteration of joint anatomy. Baseline evaluation of disease activity and damage in patients with rheumatoid arthritis through evaluation of functional status or quality of life assessments using standardized questionnaires, a physician's global assessment of disease activity, or patient's global

assessment of disease activity. The initial evaluation of the patient with RA should document symptoms of active disease (i.e., presence of joint pain, duration of morning stiffness, degree of fatigue), functional status, objective evidence of disease activity (i.e., synovitis, as assessed by tender and swollen joint counts, and the ESR or CRP level), and mechanical joint problems.

At each follow up visit, the physician must assess whether the disease is active or inactive. Symptoms of inflammatory (as contrasted with mechanical) joint disease, which include prolonged morning stiffness, duration of fatigue, and active synovitis on joint examination, indicate active disease and necessitate consideration of changing the treatment program. Occasionally, findings of the joint examination alone may not adequately reflect disease activity and structural damage; therefore, periodic measurements of the ESR or CRP level and regular assessments of functional status, as well as periodic radiographic examinations of involved joints should be performed. It is important to determine whether a decline in function is the result of inflammation, mechanical damage, or both; treatment strategies will differ accordingly. (ACR, 2002)

The ACR also conducted an extensive multi-year project, involving systematic literature reviews, expert consensus ratings, and national surveys to reach consensus on which RA patient-reported functional status assessments tools are valid, reliable, and responsive, and feasible to implement in routine clinical practice, resulting in three ACR-preferred functional status assessment tools (cite: <https://www.rheumatology.org/Portals/0/Files/2019-ACR-Recommended-Patient-Reported-Functional-Status-Assessment-Measures-in-Rheumatoid-Arthritis.pdf>).

COPYRIGHT:

The Measures are not clinical guidelines, do not establish a standard of medical care, and have not been tested for all potential applications.

The Measures, while copyrighted, can be reproduced and distributed, without modification, for noncommercial purposes, e.g., for use by health care providers in connection with their practices.

Any commercial use of the Measures requires a license agreement between the user and the American College of Rheumatology (ACR). Commercial use is defined as the sale, license, or distribution of the Measures for commercial gain, or incorporation of the Measures into a product or service that is sold, licensed or distributed for commercial gain. Neither the ACR, nor its members shall be responsible for any use of the Measures.

The PCPI's and AMA's significant past efforts and contributions to the development and updating of the Measures are acknowledged. ACR is solely responsible for the review and enhancement ("Maintenance") of the Measures as of May 22, 2019.

ACR encourages use of the Measures by other health care professionals, where appropriate.

THE MEASURES AND SPECIFICATIONS ARE PROVIDED "AS IS" WITHOUT WARRANTY OF ANY KIND.

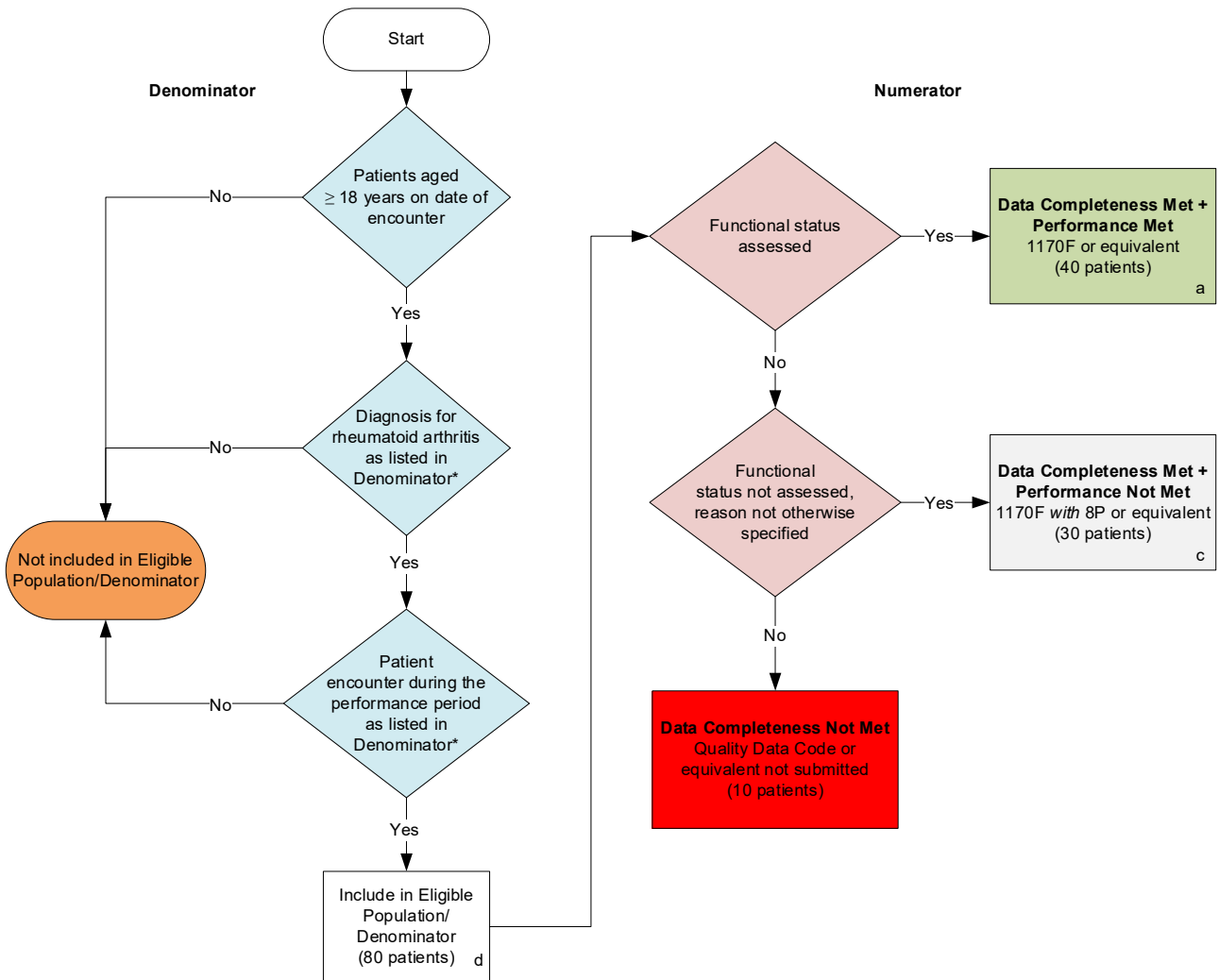
© 2015-2021 American College of Rheumatology. All Rights Reserved. Applicable FARS/DFARS Restrictions Apply to Government Use.

Limited proprietary coding may be contained in the Measure specifications for convenience. A license agreement must be entered prior to a third party's use of Current Procedural Terminology (CPT®) or other proprietary code set contained in the Measures. Any other use of CPT or other coding by the third party is strictly prohibited. ACR, the AMA, and former members of the PCPI disclaim all liability for use or accuracy of any CPT or other coding contained in the specifications.

CPT® contained in the Measure specifications is copyright 2004-2021 American Medical Association. LOINC® copyright 2004-2021 Regenstrief Institute, Inc. SNOMED CLINICAL TERMS (SNOMED CT®) copyright 2004-2021 International Health Terminology Standards Development Organisation. ICD-10 is copyright 2021 World Health Organization. All Rights Reserved.

2022 Clinical Quality Measure Flow for Quality ID #178: Rheumatoid Arthritis (RA): Functional Status Assessment

Disclaimer: Refer to the measure specification for specific coding and instructions to submit this measure.



SAMPLE CALCULATIONS

Data Completeness=

$$\frac{\text{Performance Met (a=40 patients) + Performance Not Met (c=30 patients)}}{\text{Eligible Population / Denominator (d=80 patients)}} = \frac{70 \text{ patients}}{80 \text{ patients}} = 87.50\%$$

Performance Rate=

$$\frac{\text{Performance Met (a=40 patients)}}{\text{Data Completeness Numerator (70 patients)}} = \frac{40 \text{ patients}}{70 \text{ patients}} = 57.14\%$$

*See the posted measure specification for specific coding and instructions to submit this measure.
 NOTE: Submission Frequency: Patient-Process

CPT only copyright 2021 American Medical Association. All rights reserved.
 The measure diagrams were developed by CMS as a supplemental resource to be used in conjunction with the measure specifications. They should not be used alone or as a substitution for the measure specification. v6

**2022 Clinical Quality Measure Flow Narrative for Quality ID #178:
Rheumatoid Arthritis (RA): Functional Status Assessment**

Disclaimer: Refer to the measure specification for specific coding and instructions to submit this measure.

1. Start with Denominator
2. Check *Patients aged greater than or equal to 18 years on date of encounter*.
 - a. If *Patients aged greater than or equal to 18 years on date of encounter* equals No, do not include in Eligible Population/Denominator. Stop processing.
 - b. If *Patients aged greater than or equal to 18 years on date of encounter* equals Yes, proceed to check *Diagnosis for rheumatoid arthritis as listed in Denominator**.
3. Check *Diagnosis for rheumatoid arthritis as listed in Denominator**:
 - a. If *Diagnosis for rheumatoid arthritis as listed in Denominator** equals No, do not include in Eligible Population/Denominator. Stop processing.
 - b. If *Diagnosis for rheumatoid arthritis as listed in Denominator** equals Yes, proceed to check *Patient encounter during the performance period as listed in Denominator**.
4. Check *Patient encounter during the performance period as listed in Denominator**:
 - a. If *Patient encounter during the performance period as listed in Denominator** equals No, do not include in Eligible Population/Denominator. Stop processing.
 - b. If *Patient encounter during the performance period as listed in Denominator** equals Yes, include in Eligible Population/Denominator.
5. Denominator Population:
 - Denominator Population is all Eligible Patients in the Denominator. Denominator is represented as Denominator in the Sample Calculation listed at the end of this document. Letter d equals 80 patients in the Sample Calculation.
6. Start Numerator
7. Check *Functional status assessed*:
 - a. If *Functional status assessed* equals Yes, include in *Data Completeness Met and Performance Met*.
 - *Data Completeness Met and Performance Met* letter is represented in the Data Completeness and Performance Rate in the Sample Calculation listed at the end of this document. Letter a equals 40 patients in the Sample Calculation.
 - b. If *Functional status assessed* equals No, proceed to *Functional status not assessed, reason not otherwise specified*.
8. Check *Functional status not assessed, reason not otherwise specified*:
 - a. If *Functional status not assessed, reason not otherwise specified* equals Yes, include in *Data Completeness Met and Performance Not Met*.
 - *Data Completeness Met and Performance Not Met* letter is represented in the Data

Completeness in the Sample Calculation listed at the end of this document. Letter c equals 30 patients in the Sample Calculation.

- b. If *Functional status not assessed, reason not otherwise specified* equals No, proceed to check *Data Completeness Not Met*.

9. Check *Data Completeness Not Met*:

- If *Data Completeness Not Met*, the Quality Data Code or equivalent was not submitted. 10 patients have been subtracted from the Data Completeness Numerator in the Sample Calculation.

Sample Calculations

Data Completeness equals Performance Met (a equals 40 patients) plus Performance Not Met (c equals 30 patients) divided by Eligible Population/Denominator (d equals 80 patients). All equals 70 patients divided by 80 patients. All equals 87.5 percent.

Performance Rate equals Performance Met (a equals 40 patients) divided by Data Completeness Numerator (70 patients). All equals 40 patients divided by 70 patients. All equals 57.14 percent.

*See the posted measure specification for specific coding and instructions to submit this measure.

NOTE: Submission Frequency: Patient-Process

The measure diagrams were developed by CMS as a supplemental resource to be used in conjunction with the measure specifications. They should not be used alone or as a substitution for the measure specification.