

**Quality ID #65 (NQF 0069): Appropriate Treatment for Upper Respiratory Infection (URI)**  
– National Quality Strategy Domain: Efficiency and Cost Reduction  
– Meaningful Measure Area: Appropriate Use of Healthcare

**2022 COLLECTION TYPE:**

**MIPS CLINICAL QUALITY MEASURES (CQMS)**

**MEASURE TYPE:**

Process – High Priority

**DESCRIPTION:**

Percentage of episodes for patients 3 months of age and older with a diagnosis of upper respiratory infection (URI) that did not result in an antibiotic dispensing event

**INSTRUCTIONS:**

This measure is to be submitted once for **each occurrence** of upper respiratory infection during the performance period. Claims data will be analyzed to determine unique occurrences. This measure may be submitted by Merit-based Incentive Payment System (MIPS) eligible clinicians who perform the quality actions described in the measure based on the services provided and the measure-specific denominator coding.

**NOTE:** Patient encounters for this measure conducted via telehealth (e.g., encounters coded with GQ, GT, 95, or POS 02 modifiers) are allowable.

**Measure Submission Type:**

Measure data may be submitted by individual MIPS eligible clinicians, groups, or third party intermediaries. The listed denominator criteria are used to identify the intended patient population. The numerator options included in this specification are used to submit the quality actions as allowed by the measure. The quality data codes listed do not need to be submitted by MIPS eligible clinicians, groups, or third party intermediaries that utilize this modality for submissions; however, these codes may be submitted for those third party intermediaries that utilize Medicare Part B claims data. For more information regarding Application Programming Interface (API), please refer to the Quality Payment Program (QPP) website.

**DENOMINATOR:**

Outpatient visits, telephone visits, online assessments (i.e. e-visit or virtual check-in), observation stays or emergency department visits with a diagnosis of upper respiratory infection (URI) during the measurement period among patients 3 months of age and older.

**Denominator Instructions:**

This is an episode of care measure that examines all eligible episodes for the patient during the measurement period. If the patient has more than one episode in a 31-day period, include only the first episode.

**DENOMINATOR NOTE:** \*Signifies that this CPT Category I code is a non-covered service under the Medicare Part B Physician Fee Schedule (PFS). These non-covered services should be counted in the denominator population for MIPS CQMs.

**Denominator Criteria (Eligible Cases):**

Patients aged 3 months of age and older on date of encounter

**AND**

**Diagnosis for URI (ICD-10-CM):** J00, J06.0, J06.9

**AND**

**Patient encounter during the performance period (CPT or HCPCS):** 98966, 98967, 98968, 99202, 99203, 99204, 99205, 99212, 99213, 99214, 99215, 99218, 99217, 99219, 99220, 99281, 99282, 99283, 99284, 99285,

99341, 99342, 99343, 99344, 99345, 99347, 99348, 99349, 99350, 99381\*, 99382\*, 99383\*, 99384\*, 99385\*, 99386\*, 99387\*, 99391\*, 99392\*, 99393\*, 99394\*, 99395\*, 99396\*, 99397\*, 99401\*, 99402\*, 99403\*, 99404\*, 99411\*, 99412\*, 99441, 99442, 99443, 99455, 99456

**AND NOT**

**DENOMINATOR EXCLUSIONS:**

URI episodes where the patient had a comorbid condition during the 12 months prior to or on the episode date (e.g., tuberculosis, neutropenia, cystic fibrosis, chronic bronchitis, pulmonary edema, respiratory failure, rheumatoid lung disease): G2173

**OR**

URI episodes when the patient had an active prescription of antibiotics (Table 1) in the 30 days prior to the episode date: G2174

**OR**

URI episodes when the patient had competing diagnoses on or three days after the episode date (e.g., intestinal infection, pertussis, bacterial infection, Lyme disease, otitis media, acute sinusitis, acute pharyngitis, acute tonsillitis, chronic sinusitis, infection of the pharynx/larynx/tonsils/adrenoids, prostatitis, cellulitis, mastoiditis, or bone infections, acute lymphadenitis, impetigo, skin staph infections, pneumonia/gonococcal infections, venereal disease (syphilis, chlamydia, inflammatory diseases [female reproductive organs]), infections of the kidney, cystitis or UTI, and acne): G8709

**OR**

Patients who use hospice services any time during the measurement period: G9700

**Table 1 - Antibiotic Medications**

**Note:** This list should be used when assessing antibiotic prescriptions for the denominator exclusion and numerator components.

Description	Prescription
Aminopenicillins	<ul style="list-style-type: none"> <li>• Amoxicillin</li> <li>• Ampicillin</li> </ul>
Beta-lactamase inhibitors	<ul style="list-style-type: none"> <li>• Amoxicillin-clavulanate</li> </ul>
First generation cephalosporins	<ul style="list-style-type: none"> <li>• Cefadroxi</li> <li>• Cefazolin</li> <li>• Cephalexin</li> </ul>
Folate antagonist	<ul style="list-style-type: none"> <li>• Trimethoprim</li> </ul>
Lincomycin derivatives	<ul style="list-style-type: none"> <li>• Clindamycin</li> </ul>
Macrolides	<ul style="list-style-type: none"> <li>• Azithromycin</li> <li>• Clarithromycin</li> <li>• Erythromycin</li> <li>• Erythromycin ethylsuccinate</li> <li>• Erythromycin lactobionate</li> <li>• Erythromycin stearate</li> </ul>
Natural penicillins	<ul style="list-style-type: none"> <li>• Penicillin G potassium</li> <li>• Penicillin G sodium</li> <li>• Penicillin V potassium</li> <li>• Penicillin G benzathine</li> </ul>
Penicillinase-resistant penicillins	<ul style="list-style-type: none"> <li>• Dicloxacillin</li> </ul>
Quinolones	<ul style="list-style-type: none"> <li>• Ciprofloxacin</li> <li>• Levofloxacin</li> <li>• Moxifloxacin</li> <li>• Ofloxacin</li> </ul>
Second generation cephalosporins	<ul style="list-style-type: none"> <li>• Cefaclor</li> <li>• Cefprozil</li> <li>• Cefuroxime</li> </ul>

Description	Prescription
Sulfonamides	<ul style="list-style-type: none"> <li>Sulfamethoxazole-trimethoprim</li> </ul>
Tetracyclines	<ul style="list-style-type: none"> <li>Doxycycline</li> <li>Minocycline</li> <li>Tetracycline</li> </ul>
Third generation cephalosporins	<ul style="list-style-type: none"> <li>Cefdinir</li> <li>Cefixime</li> <li>Cefpodoxime</li> <li>Ceftibuten</li> <li>Cefditoren</li> <li>Ceftriaxone</li> </ul>

**NUMERATOR:**

URI episodes without a prescription for antibiotic medication (Table 1) on or 3 days after the outpatient visit, telephone visit, online assessment, observation stay or emergency department visit for an upper respiratory infection

**Numerator Instructions:**

For performance, the measure will be calculated as the number of patient’s encounter(s) where antibiotics from Table 1 were neither prescribed nor dispensed on or within three days of the episode for URI over the total number of encounters in the denominator. A higher score indicates appropriate treatment of patients with URI (e.g., the proportion for whom antibiotics were not prescribed or dispensed following the episode). Delayed prescriptions (where an antibiotic was prescribed and patient was instructed to delay taking the antibiotic) are considered “Performance Not Met”.

**Numerator Options:**

**Performance Met:** Patient not prescribed or dispensed antibiotic (**G8708**)

**OR**

**Performance Not Met:** Patient prescribed or dispensed antibiotic (**G8710**)

**RATIONALE:**

Most upper respiratory infections (URI), also known as the common cold, are caused by viruses that require no antibiotic treatment. Too often, antibiotics are prescribed inappropriately, which can lead to antibiotic resistance (when antibiotics can no longer cure bacterial infections). In the United States, at least 2.8 million antibiotic-resistant illnesses and 35,000 deaths occur each year.

**CLINICAL RECOMMENDATION STATEMENTS:**

American Family Physician (Fashner, Ericson, and Werner, Khilberg 2012)

- Antibiotics should not be used for the treatment of cold symptoms in children or adults. (A)
- Nonsteroidal anti-inflammatory drugs reduce pain secondary to upper respiratory tract infection in adults. (A)
- Decongestants, antihistamine/decongestant combinations, and intranasal ipratropium (Atrovent) may improve cold symptoms in adults. (B)

**COPYRIGHT:**

The measures and specifications were developed by and are owned by the National Committee for Quality Assurance (“NCQA”). NCQA holds a copyright in the measures and specifications and may rescind or alter these measures and specifications at any time. Users of the measures and specifications shall not have the right to alter, enhance or otherwise modify the measures and specifications, and shall not disassemble, recompile or reverse engineer the measures and specifications. Anyone desiring to use or reproduce the materials without modification for a non-commercial purpose may do so without obtaining any approval from NCQA. All commercial uses or requests for alteration of the measures and specifications must be approved by NCQA and are subject to a license at the discretion of NCQA.

The measures and specifications are not clinical guidelines, do not establish a standard of medical care and have not been tested for all potential applications. The measures and specifications are provided “as is” without warranty of any kind. NCQA makes no representations, warranties or endorsements about the quality of any product, test or protocol identified as numerator compliant or otherwise identified as meeting the requirements of a measure or specification. NCQA also makes no representations, warranties or endorsements about the quality of any organization or clinician who uses or reports performance measures. NCQA has no liability to anyone who relies on measures and specifications or data reflective of performance under such measures and specifications. ©2004-2021 National Committee for Quality Assurance, all rights reserved.

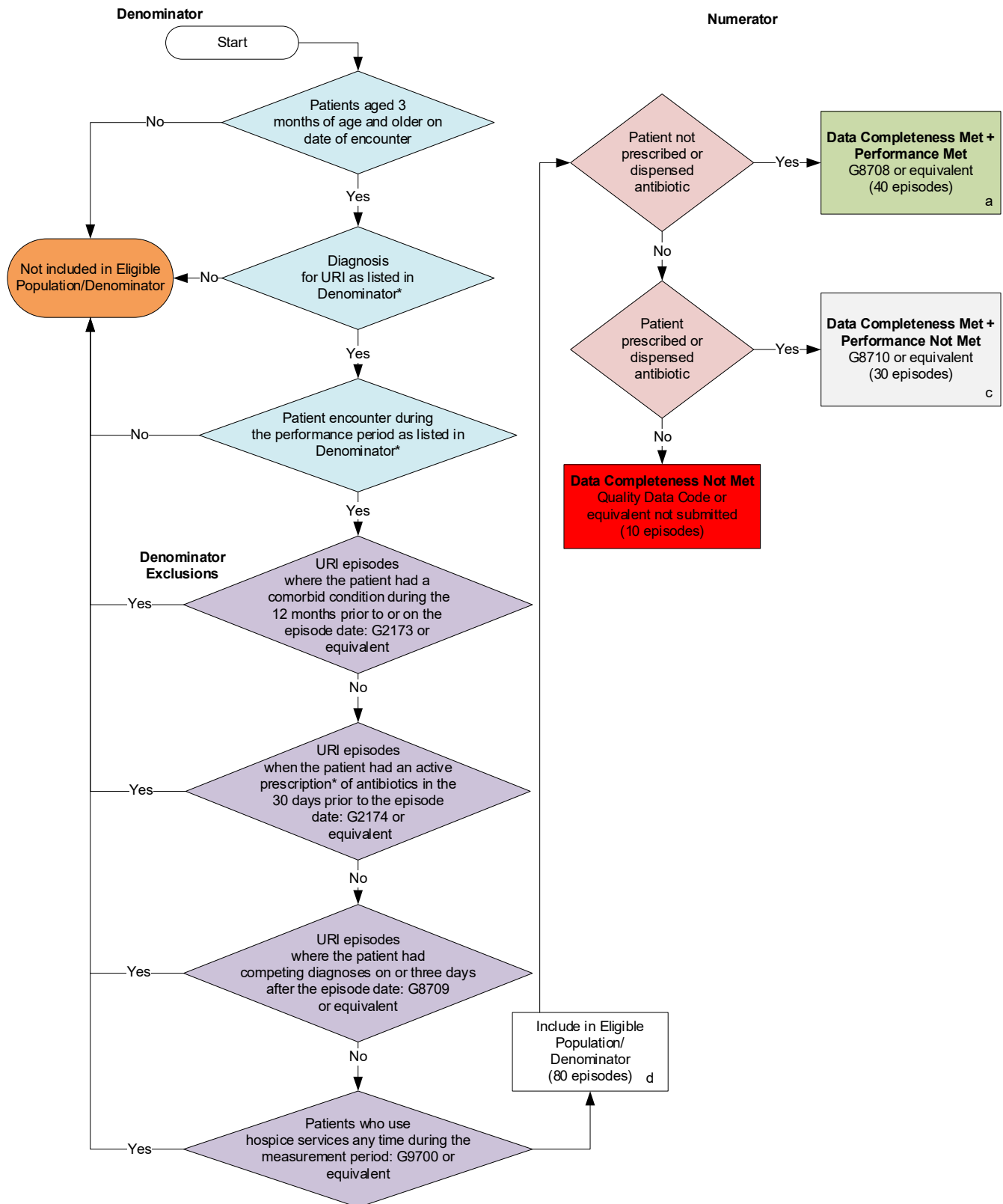
Performance measures developed by NCQA for CMS may look different from the measures solely created and owned by NCQA.

Limited proprietary coding is contained in the measure specifications for convenience. Users of the proprietary code sets should obtain all necessary licenses from the owners of these code sets. NCQA disclaims all liability for use or accuracy of any coding contained in the specifications.

CPT® contained in the Measure specifications is copyright 2004-2021 American Medical Association. ICD-10 is copyright 2021 World Health Organization. All Rights Reserved.

## 2022 Clinical Quality Measure Flow for Quality ID #65 (NQF 0069): Appropriate Treatment for Upper Respiratory Infection (URI)

*Disclaimer: Refer to the measure specification for specific coding and instructions to submit this measure.*



### SAMPLE CALCULATIONS

**Data Completeness=**

$$\frac{\text{Performance Met (a=40 episodes)} + \text{Performance Not Met (c=30 episodes)}}{\text{Eligible Population / Denominator (d=80 episodes)}} = \frac{70 \text{ episodes}}{80 \text{ episodes}} = 87.50\%$$

**Performance Rate=**

$$\frac{\text{Performance Met (a=40 episodes)}}{\text{Data Completeness Numerator (70 episodes)}} = \frac{40 \text{ episodes}}{70 \text{ episodes}} = 57.14\%$$

\* See the posted measure specification for specific coding and instructions to submit this measure.  
NOTE: Submission Frequency: Episode

CPT only copyright 2021 American Medical Association. All rights reserved.  
The measure diagrams were developed by CMS as a supplemental resource to be used  
in conjunction with the measure specifications. They should not be used alone or as a  
substitution for the measure specification. v6

**2022 Clinical Quality Measure Flow Narrative for Quality ID #65 (NQF 0069):  
Appropriate Treatment for Upper Respiratory Infection (URI)**

**Disclaimer:** Refer to the measure specification for specific coding and instructions to submit this measure.

1. Start with Denominator
2. Check *Patients aged 3 months of age and older on date of encounter*.
  - a. If *Patients aged 3 months of age and older on date of encounter* equals No, do not include in Eligible Population/Denominator. Stop processing.
  - b. If *Patients aged 3 months of age and older on date of encounter* equals Yes, proceed to *Diagnosis for URI as listed in Denominator\**.
3. Check *Diagnosis for URI as listed in Denominator\**:
  - a. If *Diagnosis for URI as listed in Denominator\** equals No, do not include in Eligible Population/Denominator. Stop processing.
  - b. If *Diagnosis for URI as listed in Denominator\** equals Yes, proceed to *Patient encounter during the performance period as listed in Denominator\**.
4. Check *Patient encounter during the performance period as listed in Denominator\**:
  - a. If *Patient encounter during the performance period as listed in Denominator\** equals No, do not include in Eligible Population/Denominator. Stop processing.
  - b. If *Patient encounter during the performance period as listed in Denominator\** equals Yes, proceed to *URI episodes where the patient had a comorbid condition during the 12 months prior to or on the episode date*.
5. Check *URI episodes where the patient had a comorbid condition during the 12 months prior to or on the episode date*:
  - a. If *URI episodes where the patient had a comorbid condition during the 12 months prior to or on the episode date* equals Yes, do not include in *Eligible Population/Denominator*. Stop processing.
  - b. If *URI episodes where the patient had a comorbid condition during the 12 months prior to or on the episode date* equals No, proceed to *URI episodes when the patient had an active prescription\* of antibiotics in the 30 days prior to the episode date*.
6. Check *URI episodes when the patient had an active prescription\* of antibiotics in the 30 days prior to the episode date*:
  - a. If *URI episodes when the patient had an active prescription\* of antibiotics in the 30 days prior to the episode date* equals Yes, do not include in *Eligible Population/Denominator*. Stop processing.
  - b. If *URI episodes when the patient had an active prescription\* of antibiotics in the 30 days prior to the episode date* equals No, proceed to *URI episodes where the patient had competing diagnoses on or three days after the episode date*.
7. Check *URI episodes where the patient had competing diagnoses on or three days after the episode date*:
  - a. If *URI episodes where the patient had competing diagnoses on or three days after the episode date* equals Yes, do not include in *Eligible Population/Denominator*. Stop processing.

- b. If *URI episodes where the patient had competing diagnoses on or three days after the episode date* equals No, proceed to *Patients who use hospice services any time during the measurement period*.
8. Check *Patients who use hospice services any time during the measurement period*:
  - a. If *Patients who use hospice services any time during the measurement period* equals Yes, do not include in *Eligible Population/Denominator*. Stop processing.
  - b. If *Patients who use hospice services any time during the measurement period* equals No, include in *Eligible Population/Denominator*.
9. Denominator Population:
  - a. Denominator Population is all Eligible Episodes in the Denominator. Denominator is represented as Denominator in the Sample Calculation listed at the end of this document. Letter d equals 80 episodes in the Sample Calculation.
10. Start Numerator
11. Check *Patient not prescribed or dispensed antibiotic*:
  - a. If *Patient not prescribed or dispensed antibiotic* equals Yes, include in *Data Completeness Met and Performance Met*.
    - *Data Completeness Met and Performance Met* letter is represented as Data Completeness and Performance Rate in the Sample Calculation listed at the end of this document. Letter a equals 40 episodes in the Sample Calculation.
  - b. If *Patient not prescribed or dispensed antibiotic* equals No, proceed to *Patient prescribed or dispensed antibiotic*.
12. Check *Patient prescribed or dispensed antibiotic*:
  - a. If *Patient prescribed or dispensed antibiotic* equals Yes, include in the *Data Completeness Met and Performance Not Met*.
    - *Data Completeness Met and Performance Not Met* letter is represented as Data Completeness in the Sample Calculation listed at the end of this document. Letter c equals 30 episodes in the Sample Calculation.
  - b. If *Patient prescribed or dispensed antibiotic* equals No, proceed to *Data Completeness Not Met*.
13. Check *Data Completeness Not Met*:
  - a. If *Data Completeness Not Met*, the Quality Data Code or equivalent was not submitted. 10 episodes have been subtracted from the Data Completeness Numerator in the Sample Calculation.

### **Sample Calculations:**

Data Completeness equals Performance Met (a equals 40 episodes) plus Performance Not Met (c equals 30 patients) divided by Eligible Population/Denominator (d equals 80 patients). All equals 70 patients divided by 80 patients. All equals 87.5 percent.

Performance rate equals Performance Met (a equals 40 episodes) divided by Data Completeness Numerator (70 patients). All equals 40 patients divided by 70 patients. All equals 57.14 percent.



\*See the posted measure specification for specific coding and instructions to submit this measure.

NOTE: Submission Frequency: Episode

The measure diagrams were developed by CMS as a supplemental resource to be used in conjunction with the measure specifications. They should not be used alone or as a substitution for the measure specification.