

Quality ID #147: Nuclear Medicine: Correlation with Existing Imaging Studies for All Patients Undergoing Bone Scintigraphy

**2023 COLLECTION TYPE:
MEDICARE PART B CLAIMS**

MEASURE TYPE:
Process – High Priority

DESCRIPTION:
Percentage of final reports for all patients, regardless of age, undergoing bone scintigraphy that include physician documentation of correlation with existing relevant imaging studies (e.g., x-ray, Magnetic Resonance Imaging (MRI), Computed Tomography (CT), etc.) that were performed.

INSTRUCTIONS:
This measure is to be submitted **each time** bone scintigraphy is performed during the performance period. There is no diagnosis associated with this measure. It is anticipated that Merit-based Incentive Payment System (MIPS) eligible clinicians who perform the professional component of the bone scintigraphy study will submit this measure.

Measure Submission Type:
Measure data may be submitted by individual MIPS eligible clinicians using Medicare Part B claims. The listed denominator criteria are used to identify the intended patient population. The numerator quality data codes included in this specification are used to submit the quality actions allowed by the measure on the claim form(s). All measure-specific coding should be submitted on the claim(s) representing the denominator eligible encounter and selected numerator option.

DENOMINATOR:
All final reports for patients, regardless of age, undergoing bone planar and whole body scintigraphy

Denominator Criteria (Eligible Cases):
Patient encounter during the performance period (CPT): 78300, 78305, 78306, 78315
WITHOUT
Telehealth Modifier (including but not limited to): GQ, GT, 95, POS 02

NUMERATOR:
Final reports that include physician documentation of correlation with existing relevant imaging studies (e.g., x-ray, MRI, CT, etc.)

Definition:
Relevant Imaging Studies – “Relevant imaging studies” are defined as studies that correspond to the same anatomical region in question.

Numerator Quality Data Coding Options:
Bone Scintigraphy Report Correlated with Existing Studies
Performance Met: CPT II 3570F: Final report for bone scintigraphy study includes correlation with existing relevant imaging studies (e.g., x-ray, MRI, CT) corresponding to the same anatomical region in question

OR
Bone Scintigraphy Report not Correlated for System Reasons

Append a submission modifier (3P) to CPT Category II code 3570F to submit documented circumstances that appropriately exclude patients from the denominator.

Denominator Exception: 3570F with 3P: Documentation of system reason(s) for not documenting correlation with existing relevant imaging studies in final report (e.g., no existing relevant imaging study available, patient did not have a previous relevant imaging study)

Note: Correlative studies are considered to be unavailable if relevant studies (reports and/or actual examination material) from other imaging modalities exist but could not be obtained after reasonable efforts to retrieve the studies are made by the interpreting physician prior to the finalization of the bone scintigraphy report.

OR

Bone Scintigraphy Report not Correlated, Reason not Otherwise Specified

Append a submission modifier (8P) to CPT Category II code 3570F to submit circumstances when the action described in the numerator is not performed and the reason is not otherwise specified.

Performance Not Met: 3570F with 8P: Bone scintigraphy report not correlated in the final report with existing relevant imaging studies, reason not otherwise specified

RATIONALE:

Radionuclide bone imaging plays an integral part in tumor staging and management; the majority of bone scans are performed in patients with a diagnosis of malignancy, especially carcinoma of the breast, prostate gland, and lung. This modality is extremely sensitive for detecting skeletal abnormalities, and numerous studies have confirmed that it is considerably more sensitive than conventional radiography for this purpose. However, the specificity of bone scan abnormalities can be low since many other conditions may mimic tumor; therefore, it is important that radionuclide bone scans are correlated with available, relevant imaging studies. Existing imaging studies that are available can help inform the diagnosis and treatment for the patient. Furthermore, correlation with existing radiographs is considered essential to insure that benign conditions are not interpreted as tumor. While there are no formal studies on variations in care in how often correlation with existing studies is not performed, there is significant anecdotal information from physicians practicing in the field that there is a gap in care and that correlation is not occurring frequently when images are available.

Literature suggests that as many as 30% of Radiology reports contain errors, regardless of the imaging modality, radiologists' experience, or time spent in interpretation. Evidence has also suggested that Radiology reports are largely non-standardized and commonly incomplete, vague, untimely, and error-prone and may not serve the needs of referring physicians. Therefore, it is imperative that existing imaging reports be correlated with the Nuclear Medicine bone scintigraphy procedure to ensure proper diagnosis and appropriate patient treatment.

CLINICAL RECOMMENDATION STATEMENTS:

Bone scintigraphy abnormalities should be correlated with appropriate physical examination and imaging studies to ascertain that osseous or soft-tissue abnormalities, which might cause cord or other nerve compression or pathologic fracture in an extremity, are not present. (SNM, 2003)

Interpretation criteria

Bone scans are very sensitive for disease, but specificity of findings is low and must be interpreted in light of other information

1. History
2. Physical Exam

3. Other test results
4. Comparison with previous studies

(SNM, 2003)

Reporting

1. Description of technique
2. Description of abnormal tracer uptake
3. Correlation with other studies
4. Comparison with previous studies
5. Interpretation

(SNM, 2003)

Comparisons with previous examinations and reports, when possible, should be a part of the imaging consultation and report. Integrated Positron Emission Tomography – Computed Tomography (PET/CT) studies are more valuable when correlated with previous diagnostic CT, previous PET, previous PET/CT, previous MRI, and all appropriate imaging studies and clinical data that are relevant. (SNM, 2010)

As bone tracer concentration reflects osteoblastic activity which is a common response to a wide range of pathologies, a focus of abnormal tracer concentration should not be confidently assigned to a particular pathology without a typical pattern of tracer distribution such as multiple randomly placed foci in metastatic bone disease or multiple aligned foci of rib uptake in trauma. In the absence of this, correlation of foci or uptake with alternative modality images such as plain radiographs, MR or CT images should be reviewed when available as this can significantly increase the accuracy of bone scintigraphy interpretation. (BNMS, 2014)

COPYRIGHT:

The Measures are not clinical guidelines, do not establish a standard of medical care, and have not been tested for all potential applications.

The Measures, while copyrighted, can be reproduced and distributed, without modification, for noncommercial purposes, eg, use by health care providers in connection with their practices. Commercial use is defined as the sale, license, or distribution of the Measures for commercial gain, or incorporation of the Measures into a product or service that is sold, licensed or distributed for commercial gain.

Commercial uses of the Measures require a license agreement between the user and the Society of Nuclear Medicine and Molecular Imaging (SNMMI). Neither SNMMI, nor the American Medical Association (AMA), nor their members shall be responsible for any use of the Measures.

The PCPI's and AMA's significant past efforts and contributions to the development and updating of the Measures are acknowledged.

SNMMI encourages use of the Measures by other health care professionals, where appropriate.

THE MEASURES AND SPECIFICATIONS ARE PROVIDED “AS IS” WITHOUT WARRANTY OF ANY KIND.

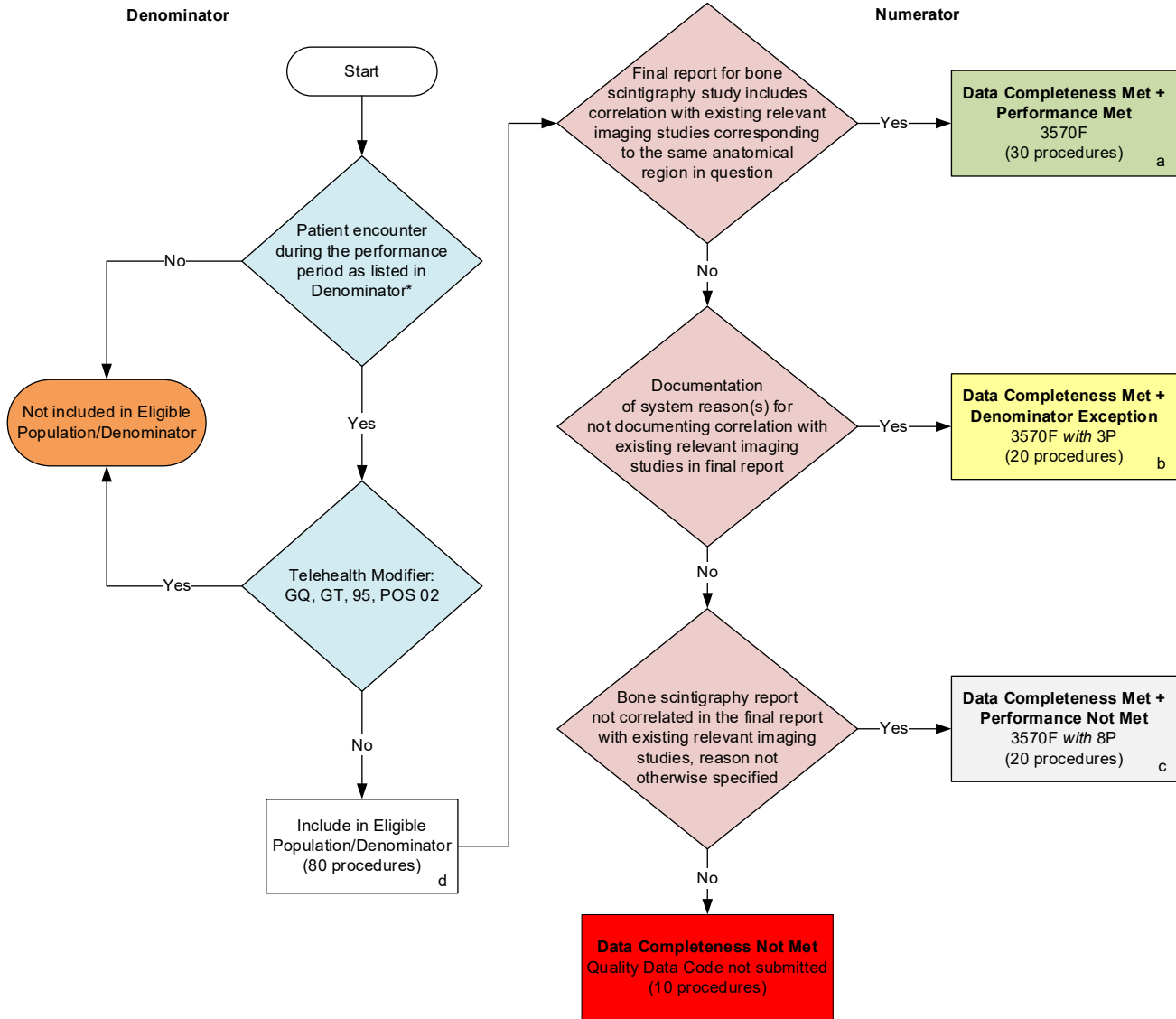
© 2016 Society of Nuclear Medicine and Molecular Imaging. All Rights Reserved.

Limited proprietary coding may be contained in the Measure specifications for convenience. A license agreement must be entered prior to a third party's use of Current Procedural Terminology (CPT®) or other proprietary code set contained in the Measures. Any other use of CPT or other coding by the third party is strictly prohibited. SNMMI, the AMA, and former members of the PCPI disclaim all liability for use or accuracy of any CPT or other coding contained in the specifications.

CPT® contained in the Measures specifications is copyright 2004-2022 American Medical Association. LOINC® copyright 2004-2022 Regenstrief Institute, Inc. SNOMED CLINICAL TERMS (SNOMED CT®) copyright 2004-2022 The International Health Terminology Standards Development Organisation (IHTSDO). ICD-10 is copyright 2022 World Health Organization. All Rights Reserved.

**2023 Medicare Part B Claims Flow for Quality ID #147:
Nuclear Medicine: Correlation with Existing Imaging Studies for All Patients
Undergoing Bone Scintigraphy**

Disclaimer: Refer to the measure specification for specific coding and instructions to submit this measure.



SAMPLE CALCULATIONS

Data Completeness =

$$\frac{\text{Performance Met (a=30 procedures)} + \text{Denominator Exception (b=20 procedures)} + \text{Performance Not Met (c=20 procedures)}}{\text{Eligible Population / Denominator (d=80 procedures)}} = \frac{70 \text{ procedures}}{80 \text{ procedures}} = 87.50\%$$

Performance Rate=

$$\frac{\text{Performance Met (a=30 procedures)}}{\text{Data Completeness Numerator (70 procedures) - Denominator Exception (b=20 procedures)}} = \frac{30 \text{ procedures}}{50 \text{ procedures}} = 60.00\%$$

* See the posted measure specification for specific coding and instructions to submit this measure.

NOTE: Submission Frequency: Procedure

NOTE: Telehealth modifiers include **but are not limited to:** GQ, GT, 95, POS 02

CPT only copyright 2022 American Medical Association. All rights reserved.

The measure diagrams were developed by CMS as a supplemental resource to be used in conjunction with the measure specifications. They should not be used alone or as a substitution for the measure specification.

v7

**2023 Medicare Part B Claims Flow Narrative for Quality ID #147:
Nuclear Medicine: Correlation with Existing Imaging Studies for All Patients
Undergoing Bone Scintigraphy**

Disclaimer: Refer to the measure specification for specific coding and instructions to submit this measure.

1. Start with Denominator
2. Check *Patient encounter during the performance period as listed in Denominator**:
 - a. If *Patient encounter during the performance period as listed in Denominator** equals No, do not include in *Eligible Population/Denominator*. Stop processing.
 - b. If *Patient encounter during the performance period as listed in Denominator** equals Yes, proceed to check *Telehealth Modifier*.
3. Check *Telehealth Modifier*:
 - a. If *Telehealth Modifier* equals Yes, do not include in *Eligible Population/Denominator*. Stop processing.
 - b. If *Telehealth Modifier* equals No, include in *Eligible Population/Denominator*.
4. Denominator Population:
 - Denominator Population is all Eligible Procedures in the Denominator. Denominator is represented as Denominator in the Sample Calculation listed at the end of this document. Letter d equals 80 procedures in the Sample Calculation.
5. Start Numerator
6. Check *Final report for bone scintigraphy study includes correlation with existing relevant imaging studies corresponding to the same anatomical region in question*:
 - a. If *Final report for bone scintigraphy study includes correlation with existing relevant imaging studies corresponding to the same anatomical region in question* equals Yes, include in *Data Completeness Met and Performance Met*.
 - *Data Completeness Met and Performance Met* letter is represented in the Data Completeness and Performance Rate in the Sample Calculation listed at the end of this document. Letter a equals 30 procedures in the Sample Calculation.
 - b. If *Final report for bone scintigraphy study includes correlation with existing relevant imaging studies corresponding to the same anatomical region in question* equals No, proceed to check *Documentation of system reason(s) for not documenting correlation with existing relevant imaging studies in final report*.
7. Check *Documentation of system reason(s) for not documenting correlation with existing relevant imaging studies in final report*:
 - a. If *Documentation of system reason(s) for not documenting correlation with existing relevant imaging studies in final report* equals Yes, include in *Data Completeness Met and Denominator Exception*.
 - *Data Completeness Met and Denominator Exception* letter is represented in the Data Completeness and Performance Rate in the Sample Calculation listed at the end of this document. Letter b equals 20 procedures in the Sample Calculation.

- b. *Documentation of system reason(s) for not documenting correlation with existing relevant imaging studies in final report equals No, proceed to Bone scintigraphy report not correlated in the final report with existing relevant imaging studies, reason not otherwise specified.*
8. *Check Bone scintigraphy report not correlated in the final report with existing relevant imaging studies, reason not otherwise specified:*
 - a. *If Bone scintigraphy report not correlated in the final report with existing relevant imaging studies, reason not otherwise specified equals Yes, include in the Data Completeness Met and Performance Not Met.*
 - *Data Completeness Met and Performance Not Met letter is represented in the Data Completeness in the Sample Calculation listed at the end of this document. Letter c equals 20 procedures in the Sample Calculation.*
 - b. *Bone scintigraphy report not correlated in the final report with existing relevant imaging studies, reason not otherwise specified equals No, proceed to check Data Completeness Not Met.*
9. *Check Data Completeness Not Met:*
 - *If Data Completeness Not Met, the Quality Data Code was not submitted. 10 procedures have been subtracted from the Data Completeness Numerator in the Sample Calculation.*

Sample Calculations

Data Completeness equals Performance Met (a equals 30 procedures) plus Denominator Exception (b equals 20 procedures) plus Performance Not Met (c equals 20 procedures) divided by Eligible Population/Denominator (d equals 80 procedures). All equals 70 procedures divided by 80 procedures. All equals 87.50 percent.

Performance Rate equals Performance Met (a equals 30 procedures) divided by Data Completeness Numerator (70 procedures) minus Denominator Exception (b equals 20 procedures). All equals 30 procedures divided by 50 procedures. All equals 60.00 percent.

*See the posted measure specification for specific coding and instructions to submit this measure.

NOTE: Submission Frequency: Procedure

NOTE: Telehealth modifiers include **but are not limited to:** GQ, GT, 95, POS 02

The measure diagrams were developed by CMS as a supplemental resource to be used in conjunction with the measure specifications. They should not be used alone or as a substitution for the measure specification.