

Quality ID #145: Radiology: Exposure Dose Indices Reported for Procedures Using Fluoroscopy

2023 COLLECTION TYPE: **MEDICARE PART B CLAIMS**

MEASURE TYPE: Process – High Priority

DESCRIPTION: Final reports for procedures using fluoroscopy that document radiation exposure indices.

INSTRUCTIONS: This measure is to be submitted **each time** a procedure using fluoroscopy is performed in a hospital or outpatient setting during the performance period. There is no diagnosis associated with this measure. It is anticipated that Merit-based Incentive Payment System (MIPS) eligible clinicians providing the services for procedures using fluoroscopy will submit this measure.

Measure Submission Type: Measure data may be submitted by individual MIPS eligible clinicians using Medicare Part B claims. The listed denominator criteria are used to identify the intended patient population. The numerator quality data codes included in this specification are used to submit the quality actions allowed by the measure on the claim form(s). All measure-specific coding should be submitted on the claim(s) representing the denominator eligible encounter and selected numerator option.

DENOMINATOR: All final reports for procedures using fluoroscopy

DENOMINATOR NOTE: The final report of the fluoroscopy procedure or fluoroscopy guided procedure includes the final radiology report, definitive operative report, or other definitive procedure report that is communicated to the referring physician, primary care physician, follow-up care team, and/or maintained in the medical record of the performing physician outside the EHR or other medical record of the facility in which the procedure is performed.

**Signifies that this CPT Category I code is a non-covered service under the Medicare Part B Physician Fee Schedule (PFS). These non-covered services will not be counted in the denominator population for Medicare Part B claims measures.*

Denominator Criteria (Eligible Cases):

Patient encounter during the performance period (CPT or HCPCS): 0075T, 0202T, 0234T, 0235T, 0236T, 0237T, 0238T, 0338T, 0339T, 22526*, 25606, 25651, 26608, 26650, 26676, 26706, 26727, 27235, 27244, 27245, 27509, 27756, 27759, 28406, 28436, 28456, 28476, 33477, 33741, 33745, 33897, 33900, 33901, 33902, 33903, 34703, 34704, 34705, 34706, 34718, 34841, 34842, 34843, 34844, 34845, 34846, 34847, 34848, 36221, 36222, 36223, 36224, 36225, 36226, 36251, 36252, 36253, 36254, 36598, 36901, 36902, 36903, 36904, 36905, 36906, 37182, 37183, 37184, 37187, 37188, 37211, 37212, 37213, 37214, 37215, 37216*, 37217, 37218, 37220, 37221, 37224, 37225, 37226, 37227, 37228, 37229, 37230, 37231, 37236, 37238, 37241, 37242, 37243, 37244, 37246, 37248, 43260, 43261, 43262, 43263, 43264, 43265, 43274, 43275, 43276, 43277, 43278, 43752, 47537, 49440, 49441, 49442, 49446, 49450, 49451, 49452, 49460, 50382, 50384, 50385, 50386, 50387, 50389, 61623, 61630, 61635, 61640*, 61645, 61650, 62263, 62264, 62280, 62281, 62282, 62302, 62303, 62304, 62305, 70010, 70015, 70170, 70332, 70370, 70371, 70390, 72240, 72255, 72265, 72270, 72285, 72295, 73040, 73085, 73115, 73525, 73580, 73615, 74210, 74220,

74221, 74235, 74240, 74246, 74251, 74270, 74280, 74300, 74328, 74329, 74330, 74340, 74355, 74360, 74363, 74425, 74440, 74445, 74450, 74470, 74485, 74742, 75600, 75605, 75625, 75630, 75705, 75710, 75716, 75726, 75731, 75733, 75736, 75741, 75743, 75746, 75756, 75801, 75803, 75805, 75807, 75810, 75825, 75827, 75831, 75833, 75840, 75842, 75860, 75870, 75872, 75880, 75885, 75887, 75889, 75891, 75893, 75894, 75898, 75901, 75902, 75956, 75957, 75958, 75959, 75970, 76000, 76080, 76496, 77001, 77002, 77003, 92611, 93451, 93452, 93453, 93454, 93455, 93456, 93457, 93458, 93459, 93460, 93461, 93503, 93505, 93580, 93581, 93583, 93593, 93594, 93595, 93596, 93597, G0106, G0120, G0122*

WITHOUT

Telehealth Modifier (including but not limited to): GQ, GT, 95, POS 02

NUMERATOR:

Final reports for procedures using fluoroscopy that include radiation exposure indices

Definition:

Radiation exposure indices - For the purposes of this measure, “radiation exposure indices” should include at least one of the following:

1. Reference air kerma ($K_{a,r}$) in Gy or mGy
2. Kerma-area product (P_{KA}) or Dose area product (DAP) in $\mu\text{Gy}\cdot\text{m}^2$, $\text{mGy}\cdot\text{cm}^2$ (or similar)
3. Peak skin dose (PSD) in Gy or mGy

When reporting indices the report must clearly state what radiation quantity is being submitted, that is only reporting dose in mGy is insufficient. PSD in mGy is very different from $K_{a,r}$ in mGy. As an example, PSD = 10 mGy or $K_{a,r} = 10$ mGy would meet numerator performance, but “10 mGy” alone would not.

Note: When reporting reference air kerma or kerma-area product for biplane systems, the value should be reported as the sum of both planes (or the value for each plane should be reported individually).

Numerator Instructions:

Documentation: Dose information in the final report may be located in a variety of sources and should be available to the referring physician on receipt of report.

NUMERATOR NOTE: *In interventional radiology procedures with runs, dose indices are displayed on the console and in the radiation dose structured report (RDSR).*

Numerator Quality Data Coding Options:

Radiation Exposure indices Documented in Final Procedure Report

Performance Met: G9500:

Radiation exposure indices documented in final report for procedures using fluoroscopy

OR

Radiation Exposure indices not Documented in Final Procedure Report, Reason not Given

Performance Not Met: G9501:

Radiation exposure indices not documented in final report for procedure using fluoroscopy, reason not given

RATIONALE:

Increasing physician awareness of patient exposure to radiation is an important step towards reducing the potentially harmful effects of radiation as a result of imaging studies. Studies have shown that dose monitoring for fluoroscopy procedures has resulted in an overall reduction in patient radiation exposure. (RSNA, 2019) Proper identification and management of patients receiving high doses of radiation from fluoroscopy procedures are essential elements of patient care due to the slowly developing nature of radiation-induced tissue reactions. (AAPM, 2022)

CLINICAL RECOMMENDATION STATEMENTS:

All available radiation dose data should be recorded in the patient’s medical record.

Adequate recording of dose metrics is defined as documentation in the patient record of at least one of the following for all interventional procedures requiring fluoroscopy (in descending order of desirability): $K_{a,r}$, P_{KA} , and PSD. Reference air kerma is the most useful and widely available of these metrics as it is required to be displayed on all fluoroscopes sold in the United States as of June 2006, however all three metrics are sufficient in estimating radiation exposure from fluoroscopic procedures. (AAPM, 2022)

More complete patient radiation dose data should be recorded for all high-dose interventional procedures, such as embolizations, transjugular intrahepatic portosystemic shunts, and arterial angioplasty or stent placement anywhere in the abdomen and pelvis. (Amis et al., ACR, 2007)

P_{KA} , also known as kerma-area product (KAP) or dose-area product (DAP), is the integral of air kerma (the energy extracted from an x-ray beam per unit mass of air in a small irradiated air volume; for diagnostic x-rays, the dose delivered to that volume of air) across the entire x-ray beam emitted from the x-ray tube. It is a surrogate measure of the amount of energy delivered to the patient, and thus a reasonable indicator of the risk of stochastic effects. The symbol P_{KA} is the notation recommended by the International Commission on Radiation Units and Measurements (ICRU, 2012).

COPYRIGHT:

The Measure is not a clinical guideline, does not establish a standard of medical care, and has not been tested for all potential applications.

The Measure, while copyrighted, can be reproduced and distributed, without modification, for noncommercial purposes, e.g., use by health care providers in connection with their practices. Commercial use is defined as the sale, license, or distribution of the Measure for commercial gain, or incorporation of the Measure into a product or service that is sold, licensed or distributed for commercial gain.

Commercial uses of the Measure require a license agreement between the user and the American College of Radiology (ACR). Neither ACR nor its members shall be responsible for any use of the Measure.

The PCPI's and AMA's significant past efforts and contributions to the development and updating of the Measures are acknowledged. ACR is solely responsible for the review and enhancement ("Maintenance") of the Measure as of August 1, 2020.

ACR encourages use of the Measure by other health care professionals, where appropriate.

THE MEASURE AND SPECIFICATIONS ARE PROVIDED "AS IS" WITHOUT WARRANTY OF ANY KIND.

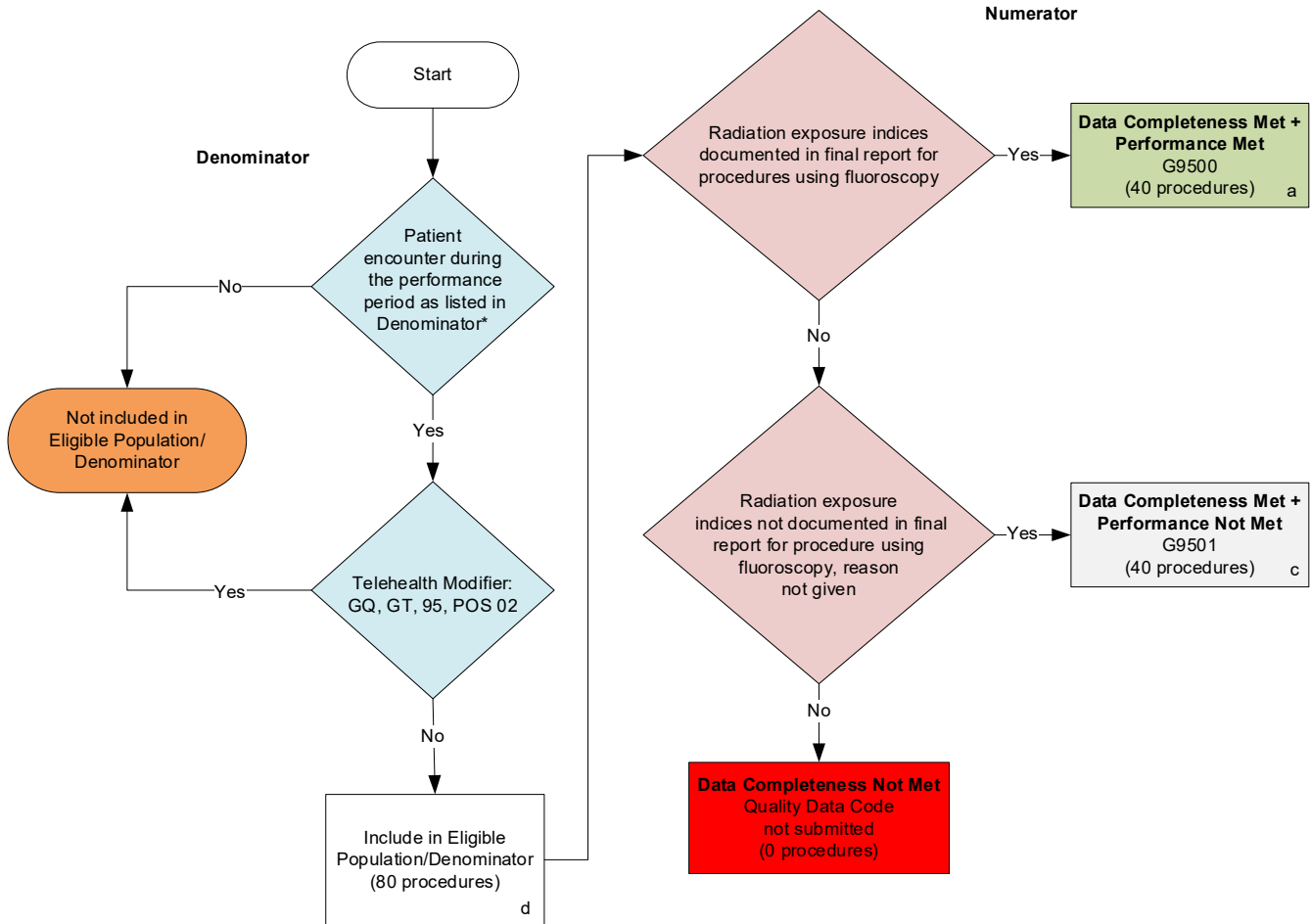
©2022 American College of Radiology. All Rights Reserved. Applicable FARS/DFARS Restrictions Apply to Government Use.

Limited proprietary coding may be contained in the Measure specifications for convenience. A license agreement must be entered prior to a third party's use of Current Procedural Terminology (CPT®) or other proprietary code set contained in the Measures. Any other use of CPT or other coding by the third party is strictly prohibited. ACR and its members disclaim all liability for use or accuracy of any CPT or other coding contained in the specifications.

CPT® contained in the Measures specifications is copyright 2004-2022 American Medical Association. LOINC® copyright 2004-2022 Regenstrief Institute, Inc. SNOMED CLINICAL TERMS (SNOMED CT®) copyright 2004-2022. The International Health Terminology Standards Development Organisation (IHTSDO). ICD-10 is copyright 2022 World Health Organization. All Rights Reserved.

2023 Medicare Part B Claims Flow for Quality ID #145: Radiology: Exposure Dose Indices Reported for Procedures Using Fluoroscopy

Disclaimer: Refer to the measure specification for specific coding and instructions to submit this measure.



SAMPLE CALCULATIONS

Data Completeness=

$$\frac{\text{Performance Met (a=40 procedures) + Performance Not Met (c=40 procedures)}}{\text{Eligible Population / Denominator (d=80 procedures)}} = \frac{80 \text{ procedures}}{80 \text{ procedures}} = 100.00\%$$

Performance Rate=

$$\frac{\text{Performance Met (a=40 procedures)}}{\text{Data Completeness Numerator (80 procedures)}} = \frac{40 \text{ procedures}}{80 \text{ procedures}} = 50.00\%$$

*See the posted measure specification for specific coding and instructions to submit this measure.

NOTE: Submission Frequency: Procedure

NOTE: Telehealth modifiers include **but are not limited to:** GQ, GT, 95, POS 02

CPT only copyright 2022 American Medical Association. All rights reserved.
The measure diagrams were developed by CMS as a supplemental resource to be used in conjunction with the measure specifications. They should not be used alone or as a substitution for the measure specification.

**2023 Medicare Part B Claims Flow Narrative for Quality ID #145:
Radiology: Exposure Dose Indices Reported for Procedures Using Fluoroscopy**

Disclaimer: Refer to the measure specification for specific coding and instructions to submit this measure.

1. Start with Denominator
2. Check *Patient encounter during the performance period as listed in Denominator**:
 - a. If *Patient encounter during the performance period as listed in Denominator** equals No, do not include in *Eligible Population/Denominator*. Stop processing.
 - b. If *Patient encounter during the performance period as listed in Denominator** equals Yes, proceed to check *Telehealth Modifier*.
3. Check *Telehealth Modifier*:
 - a. If *Telehealth Modifier* equals Yes, do not include in *Eligible Population/Denominator*. Stop processing.
 - b. If *Telehealth Modifier* equals No, include in *Eligible Population/Denominator*.
4. Denominator Population:
 - Denominator Population is all Eligible Procedures in the Denominator. Denominator is represented as Denominator in the Sample Calculation listed at the end of this document. Letter d equals 80 procedures in the Sample Calculation.
5. Start Numerator
6. Check *Radiation exposure indices documented in final report for procedures using fluoroscopy*:
 - a. If *Radiation exposure indices documented in final report for procedures using fluoroscopy* equals Yes, include in *Data Completeness Met and Performance Met*.
 - *Data Completeness Met and Performance Met* letter is represented in the Data Completeness and Performance Rate in the Sample Calculation listed at the end of this document. Letter a equals 40 procedures in the Sample Calculation.
 - b. If *Radiation exposure indices documented in final report for procedures using fluoroscopy* equals No, proceed to check *Radiation exposure indices not documented in final report for procedure using fluoroscopy, reason not given*.
7. Check *Radiation exposure indices not documented in final report for procedure using fluoroscopy, reason not given*:
 - a. If *Radiation exposure indices not documented in final report for procedure using fluoroscopy, reason not given* equals Yes, include in *Data Completeness Met and Performance Not Met*.
 - *Data Completeness Met and Performance Not Met* letter is represented in the Data Completeness in the Sample Calculation listed at the end of this document. Letter c equals 40 procedures in the Sample Calculation.
 - b. If *Radiation exposure indices not documented in final report for procedure using fluoroscopy, reason not given* equals No, proceed to check *Data Completeness Not Met*.
8. Check *Data Completeness Not Met*:

- a. If *Data Completeness Not Met*, the Quality Data Code was not submitted. 0 procedures have been subtracted from the Data Completeness Numerator in the Sample Calculation.

Sample Calculations

Data Completeness equals Performance Met (a equals 40 procedures) plus Performance Not Met (c equals 40 procedures) divided by Eligible Population/Denominator (d equals 80 procedures). All equals 80 procedures divided by 80 procedures. All equals 100.00 percent.

Performance Rate equals Performance Met (a equals 40 procedures) divided by Data Completeness Numerator (80 procedures). All equals 40 procedures divided by 80 procedures. All equals 50.00 percent.

*See the posted measure specification for specific coding and instructions to submit this measure.

NOTE: Submission Frequency: Procedure

NOTE: Telehealth modifiers include **but are not limited to**: GQ, GT, 95, POS 02

The measure diagrams were developed by CMS as a supplemental resource to be used in conjunction with the measure specifications. They should not be used alone or as a substitution for the measure specification.