

## Quality ID #39 (NQF 0046): Screening for Osteoporosis for Women Aged 65-85 Years of Age

### **2023 COLLECTION TYPE:**

**MIPS CLINICAL QUALITY MEASURES (CQMS)**

### **MEASURE TYPE:**

Process

### **DESCRIPTION:**

Percentage of female patients aged 65-85 years of age who ever had a central dual-energy X-ray absorptiometry (DXA) to check for osteoporosis.

### **INSTRUCTIONS:**

This measure is to be submitted a minimum of **once per performance period** for patients seen during the performance period. Female patients aged 65-85 years of age should have a central DXA measurement performed at least once to screen for osteoporosis. This measure may be submitted by Merit-based Incentive Payment System (MIPS) eligible clinicians who perform the quality actions described in the measure based on the services provided and the measure-specific denominator coding.

**NOTE:** Patient encounters for this measure conducted via telehealth (e.g., encounters coded with GQ, GT, 95, or POS 02 modifiers) are allowable.

### **Measure Submission Type:**

Measure data may be submitted by individual MIPS eligible clinicians, groups, or third party intermediaries. The listed denominator criteria are used to identify the intended patient population. The numerator options included in this specification are used to submit the quality actions as allowed by the measure. The quality data codes listed do not need to be submitted by MIPS eligible clinicians, groups, or third party intermediaries that utilize this modality for submissions; however, these codes may be submitted for those third party intermediaries that utilize Medicare Part B claims data. For more information regarding Application Programming Interface (API), please refer to the Quality Payment Program (QPP) website.

### **DENOMINATOR:**

Women age 65-85

#### **Definition:**

**Diagnosis of osteoporosis (Denominator Exclusion)** –The following codes would be sufficient to define the Denominator Exclusion of “diagnosis of osteoporosis”:

M80.00XA, M80.00XD, M80.00XG, M80.00XK, M80.00XP, M80.00XS, M80.011A, M80.011D, M80.011G, M80.011K, M80.011P, M80.011S, M80.012A, M80.012D, M80.012G, M80.012K, M80.012P, M80.012S, M80.019A, M80.019D, M80.019G, M80.019K, M80.019P, M80.019S, M80.021A, M80.021D, M80.021G, M80.021K, M80.021P, M80.021S, M80.022A, M80.022D, M80.022G, M80.022K, M80.022P, M80.022S, M80.029A, M80.029D, M80.029G, M80.029K, M80.029P, M80.029S, M80.031A, M80.031D, M80.031G, M80.031K, M80.031P, M80.031S, M80.032A, M80.032D, M80.032G, M80.032K, M80.032P, M80.032S, M80.039A, M80.039D, M80.039G, M80.039K, M80.039P, M80.039S, M80.041A, M80.041D, M80.041G, M80.041K, M80.041P, M80.041S, M80.042A, M80.042D, M80.042G, M80.042K, M80.042P, M80.042S, M80.049A, M80.049D, M80.049G, M80.049K, M80.049P, M80.049S, M80.051A, M80.051D, M80.051G, M80.051K, M80.051P, M80.051S, M80.052A, M80.052D, M80.052G, M80.052K, M80.052P, M80.052S, M80.059A, M80.059D, M80.059G, M80.0AXA, M80.059K, M80.059P, M80.059S, M80.061A, M80.061D, M80.061G, M80.061K, M80.061P, M80.061S, M80.062A, M80.062D, M80.062G, M80.062K, M80.062P,

M80.062S, M80.069A, M80.069D, M80.069G, M80.069K, M80.069P, M80.069S, M80.071A, M80.071D, M80.071G, M80.071K, M80.071P, M80.071S, M80.072A, M80.072D, M80.072G, M80.072K, M80.072P, M80.072S, M80.079A, M80.079D, M80.079G, M80.079K, M80.079P, M80.079S, M80.08XA, M80.08XD, M80.08XG, M80.08XK, M80.08XP, M80.08XS, M80.80XA, M80.80XD, M80.80XG, M80.80XK, M80.80XP, M80.80XS, M80.811A, M80.811D, M80.811G, M80.811K, M80.811P, M80.811S, M80.812A, M80.812D, M80.812G, M80.812K, M80.812P, M80.812S, M80.819A, M80.819D, M80.819G, M80.819K, M80.819P, M80.819S, M80.821A, M80.821D, M80.821G, M80.821K, M80.821P, M80.821S, M80.822A, M80.822D, M80.822G, M80.822K, M80.822P, M80.822S, M80.829A, M80.829D, M80.829G, M80.829K, M80.829P, M80.829S, M80.831A, M80.831D, M80.831G, M80.831K, M80.831P, M80.831S, M80.832A, M80.832D, M80.832G, M80.832K, M80.832P, M80.832S, M80.839A, M80.839D, M80.839G, M80.839K, M80.839P, M80.839S, M80.841A, M80.841D, M80.841G, M80.841K, M80.841P, M80.841S, M80.842A, M80.842D, M80.842G, M80.842K, M80.842P, M80.842S, M80.849A, M80.849D, M80.849G, M80.849K, M80.849P, M80.849S, M80.851A, M80.851D, M80.851G, M80.851K, M80.851P, M80.851S, M80.852A, M80.852D, M80.852G, M80.852K, M80.852P, M80.852S, M80.859A, M80.859D, M80.859G, M80.859K, M80.859P, M80.859S, M80.861A, M80.861D, M80.861G, M80.861K, M80.861P, M80.861S, M80.862A, M80.862D, M80.862G, M80.862K, M80.862P, M80.862S, M80.869A, M80.869D, M80.869G, M80.869K, M80.869P, M80.869S, M80.871A, M80.871D, M80.871G, M80.871K, M80.871P, M80.871S, M80.872A, M80.872D, M80.872G, M80.872K, M80.872P, M80.872S, M80.879A, M80.879D, M80.879G, M80.879K, M80.879P, M80.879S, M80.88XA, M80.88XD, M80.88XG, M80.88XK, M80.88XP, M80.88XS, M81.0, M81.6, M81.8

**Denominator Criteria (Eligible Cases):**

Female patients aged 65-85 years on date of encounter

**AND**

**Patient encounter during the performance period (CPT):** 99202, 99203, 99204, 99205, 99212, 99213, 99214, 99215

**AND NOT**

**DENOMINATOR EXCLUSIONS:**

**Patient with diagnosis of osteoporosis on date of encounter:** M1153

**OR**

**Patient receiving hospice services any time during the measurement period:** G9690

**NUMERATOR:**

The number of women who have documentation in their medical record of having received a DXA test of the hip or spine

**Numerator Options:**

***Performance Met:***

Patient with documented results of a central Dual-energy X-Ray Absorptiometry (DXA) ever being performed (**G8399**)

**OR**

***Performance Not Met:***

Patient with central Dual-energy X-Ray Absorptiometry (DXA) results not documented, reason not given (**G8400**)

**RATIONALE:**

This measure assesses the number of women 65-85 who have ever received a dual-energy x-ray absorptiometry (DXA) test to check for osteoporosis. There is convincing evidence that bone mineral density tests predict short-term risk for osteoporotic fractures. There is also evidence osteoporosis treatment reduces the incidence of fracture in women who are identified to be at risk of an osteoporotic fracture. Fractures, especially in the older population, can cause significant health issues, decline in function, and, in some cases lead to mortality.

## **CLINICAL RECOMMENDATION STATEMENTS:**

The U.S. Preventive Services Task Force (USPSTF) recommends screening for osteoporosis in women aged 65 years and older and in younger women whose fracture risk is equal to or greater than that of a 65-year old white woman who has no additional risk factors. (B Recommendation) (USPSTF). “Based on the U.S. FRAX tool, a 65-year-old white woman with no other risk factors has a 9.3% 10-year risk for any osteoporotic fracture. White women between the ages of 50 and 64 years with equivalent or greater 10-year fracture risks based on specific risk factors include but are not limited to the following persons: 1) a 50-year-old current smoker with a BMI less than 21 kg/m<sup>2</sup>, daily alcohol use, and parental fracture history; 2) a 55-year-old woman with a parental fracture history; 3) a 60-year-old woman with a BMI less than 21 kg/m<sup>2</sup> and daily alcohol use; and 4) a 60-year-old current smoker with daily alcohol use. The FRAX tool also predicts 10-year fracture risks for black, Asian, and Hispanic women in the United States. In general, estimated fracture risks in nonwhite women are lower than those for white women of the same age.” (USPSTF)

Current diagnostic and treatment criteria for osteoporosis rely on DXA measurements only.

The USPSTF did not define a specific upper age limit for screening in women, however they noted that clinicians should take into account the patient's remaining lifespan when deciding whether to screen patients with significant illness; the benefit of treatment emerged 18 to 24 months after initiation of treatment.

## **COPYRIGHT:**

This Physician Performance Measure (Measure) and related data specifications were developed by the former PCPI® Foundation (PCPI®) and the National Committee for Quality Assurance (NCQA). Neither the American Medical Association (AMA) or NCQA shall be responsible for any use of the Measure. The Measure is not a clinical guideline and does not establish a standard of medical care and has not been tested for all potential applications.

## **THE MEASURE AND SPECIFICATIONS ARE PROVIDED "AS IS" WITHOUT WARRANTY OF ANY KIND.**

The AMA and NCQA make no representations, warranties, or endorsement about the quality of any organization or physician that uses or reports performance measures and NCQA has no liability to anyone who relies on such measures or specifications.

The Measure can be reproduced and distributed, without modification, for noncommercial purposes (e.g., use by healthcare providers in connection with their practices) without obtaining approval from NCQA. Commercial use is defined as the sale, licensing, or distribution of the Measure for commercial gain, or incorporation of the Measure into a product or service that is sold, licensed or distributed for commercial gain. All commercial uses or requests for modification must be approved by NCQA and are subject to a license at the discretion of NCQA.

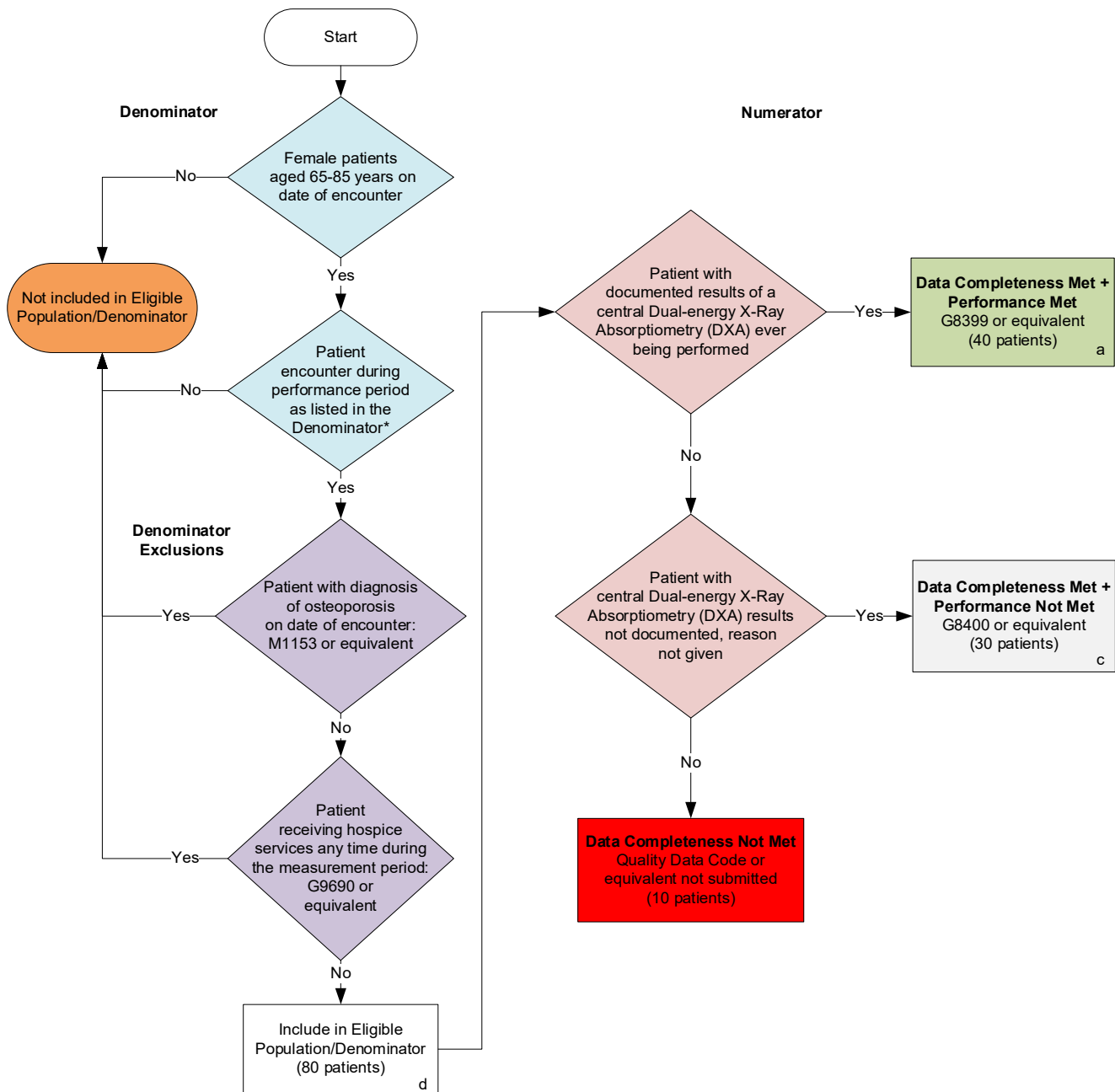
©2012-2022 National Committee for Quality Assurance. All Rights Reserved.

Limited proprietary coding is contained in the Measure specifications for user convenience. Users of proprietary code sets should obtain all necessary licenses from the owners of the code sets. The AMA and NCQA disclaim all liability for use or accuracy of any third party codes contained in the specifications.

CPT® contained in the Measure specifications is copyright 2004-2022 American Medical Association. LOINC® copyright 2004-2022 Regenstrief Institute, Inc. This material contains SNOMED Clinical Terms® (SNOMED CT®) copyright 2004-2022 International Health Terminology Standards Development Organisation. ICD-10 copyright 2022 World Health Organization. All Rights Reserved.

## 2023 Clinical Quality Measure Flow for Quality ID #39 (NQF 0046): Screening for Osteoporosis for Women Aged 65-85 Years of Age

*Disclaimer: Refer to measure specification for specific coding and instructions to submit this measure.*



### SAMPLE CALCULATIONS

**Data Completeness=**  

$$\frac{\text{Performance Met (a=40 patients) + Performance Not Met (c=30 patients)}}{\text{Eligible Population / Denominator (d=80 patients)}} = \frac{70 \text{ patients}}{80 \text{ patients}} = 87.50\%$$

**Performance Rate=**  

$$\frac{\text{Performance Met (a=40 patients)}}{\text{Data Completeness Numerator (70 patients)}} = \frac{40 \text{ patients}}{70 \text{ patients}} = 57.14\%$$

\*See the posted measure specification for specific coding and instructions to submit this measure.

NOTE: Submission Frequency: Patient-Process

CPT only copyright 2022 American Medical Association. All rights reserved. The measure diagrams were developed by CMS as a supplemental resource to be used in conjunction with the measure specifications. They should not be used alone or as a substitution for the measure specification.

v7

**2023 Clinical Quality Measure Flow Narrative for Quality ID #39 (NQF 0046):  
Screening for Osteoporosis for Women Aged 65-85 Years of Age**

**Disclaimer:** Refer to the measure specification for specific coding and instructions to submit this measure.

1. Start with Denominator
2. Check *Female patients aged 65-85 years on date of encounter*.
  - a. If *Female patients aged 65-85 years on date of encounter* equals No, do not include in *Eligible Population/Denominator*. Stop processing.
  - b. If *Female patients aged 65-85 years on date of encounter* equals Yes, proceed to check *Patient encounter during performance period as listed in the Denominator\**.
3. Check *Patient encounter during performance period as listed in the Denominator\**:
  - a. If *Patient encounter during performance period as listed in the Denominator\** equals No, do not include in *Eligible Population/Denominator*. Stop processing.
  - b. If *Patient encounter during performance period as listed in the Denominator\** equals Yes, proceed to check *Patient with diagnosis of osteoporosis on date of encounter*.
4. Check *Patient with diagnosis of osteoporosis on date of encounter*:
  - a. If *Patient with diagnosis of osteoporosis on date of encounter* equals Yes, do not include in *Eligible Population/Denominator*. Stop processing.
  - b. If *Patient with diagnosis of osteoporosis on date of encounter* equals No, proceed to check *Patient receiving hospice services any time during the measurement period*.
5. Check *Patient receiving hospice services any time during the measurement period*:
  - a. If *Patient receiving hospice services any time during the measurement period* equals Yes, do not include in *Eligible Population/Denominator*. Stop processing.
  - b. If *Patient receiving hospice services any time during the measurement period* equals No, include in *Eligible Population/Denominator*.
6. Denominator Population:
  - Denominator Population is all Eligible Patients in the Denominator. Denominator is represented as Denominator in the Sample Calculation listed at the end of this document. Letter d equals 80 patients in the Sample Calculation.
7. Start Numerator
8. Check *Patient with documented results of a central Dual-energy X-Ray Absorptiometry (DXA) ever being performed*:
  - a. If *Patient with documented results of a central Dual-energy X-Ray Absorptiometry (DXA) ever being performed* equals Yes, include in *Data Completeness Met and Performance Met*.
    - *Data Completeness Met and Performance Met* letter is represented as Data Completeness and Performance Rate in the Sample Calculation listed at the end of this document. Letter a equals 40 patients in the Sample Calculation.

- b. If Patient with documented results of a central Dual-energy X-Ray Absorptiometry (DXA) ever being performed equals No, proceed to check Patient with central Dual-energy X-Ray Absorptiometry (DXA) results not documented, reason not given.
9. Check Patient with central Dual-energy X-Ray Absorptiometry (DXA) results not documented, reason not given:
- a. If Patient with central Dual-energy X-Ray Absorptiometry (DXA) results not documented, reason not given equals Yes, include in Data Completeness Met and Performance Not Met.
    - Data Completeness Met and Performance Not Met letter is represented as Data Completeness in the Sample Calculation listed at the end of this document. Letter c equals 30 patients in the Sample Calculation.
  - b. If Patient with central Dual-energy X-Ray Absorptiometry (DXA) results not documented, reason not given equals No, proceed to check Data Completeness Not Met.
10. Check Data Completeness Not Met:
- a. If Data Completeness Not Met, the Quality Data Code or equivalent was not submitted. 10 patients have been subtracted from the Data Completeness Numerator in the Sample Calculation.

**Sample Calculations:**

Data Completeness equals Performance Met (a equals 40 patients) plus Performance Not Met (c equals 30 patients) divided by Eligible Population/Denominator (d equals 80 patients). All equals 70 patients divided by 80 patients. All equals 87.50 percent.

Performance Rate equals Performance Met (a equals 40 patients) divided by Data Completeness Numerator (70 patients). All equals 40 patients divided by 70 patients. All equals 57.14 percent.

\*See the posted measure specification for specific coding and instructions to submit this measure.

NOTE: Submission Frequency: Patient-Process

The measure diagrams were developed by CMS as a supplemental resource to be used in conjunction with the measure specifications. They should not be used alone or as a substitution for the measure specification.